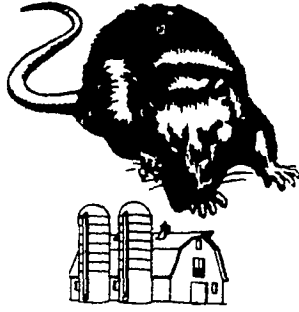


# Chester Co. DHIA

(Continued from Page C20)

Round Top Farm	3	292	18,819	39	740
24	3	295	18,835	38	718
74					

**ATTENTION FARMERS... FREE ESTIMATES ON RODENT CONTROL**



RODENTS carry diseases which can endanger the health of your flocks. Your business is raising the flocks. Ours is protecting them.

1278 Loop Rd.  
Lancaster, Pa. 17604  
717-397-3721

**Farrlich**

Since 1928  
Pest control is too important to trust to anyone else

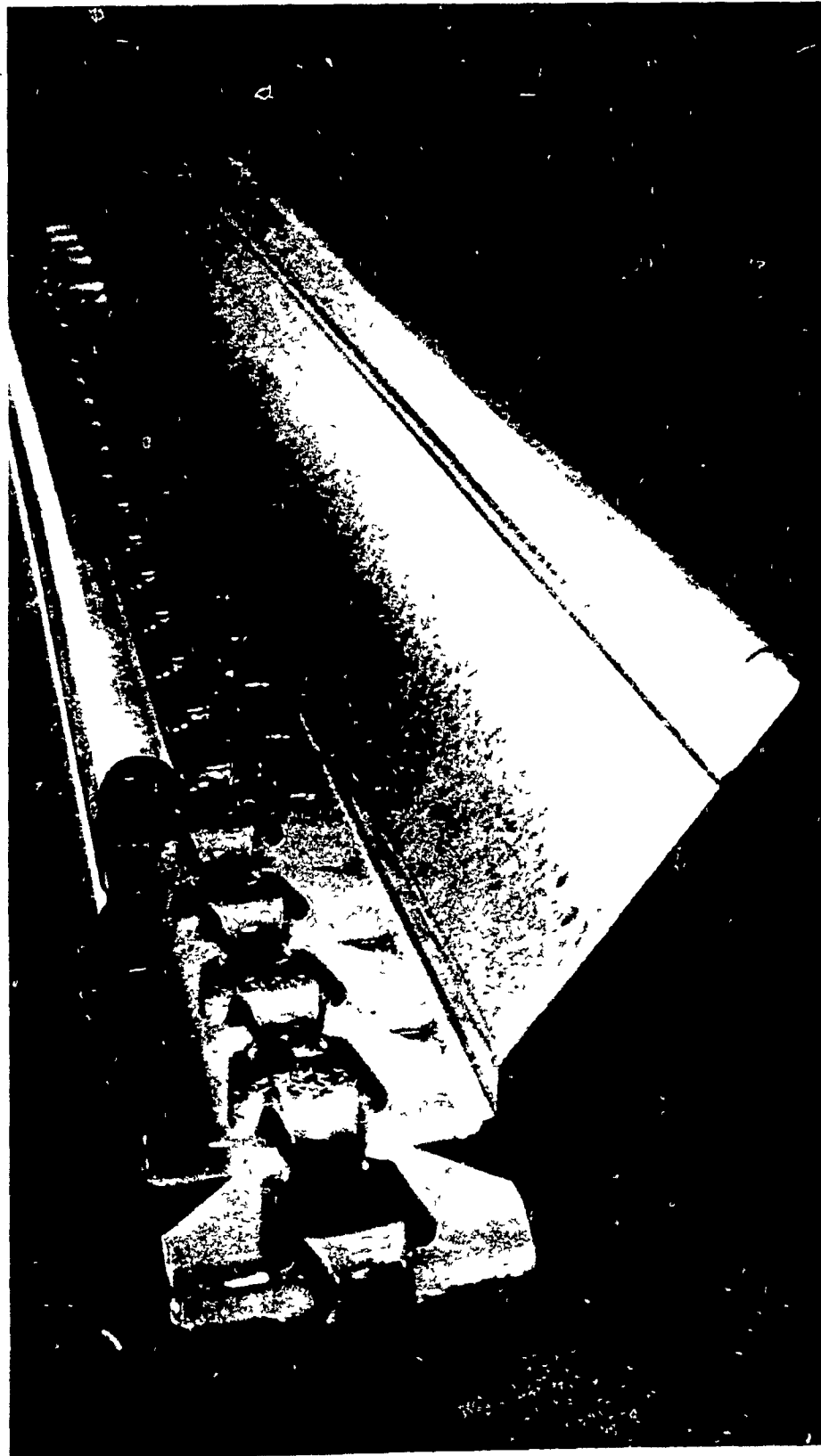
OWNER	BREED	NO COWS	% DAYS IN MILK	LBS MILK	% FAT	LBS FAT
Walmooore 1						
877	3	276	19 808	3 7	730	
976	3	305	18 172	4 0	723	
Horace Prange						
Topps	3	305	19 368	3 8	730	
Gottlieb Strohmaier						
Sylvia	3	305	16 793	4 3	730	
Henry S King						
Pilot	3	305	20 290	3 6	725	
Jonas Z King						
18	3	305	18,517	3 9	721	
Newton Evans Jr						
149	3	305	23,002	3 1	720	
Paul M Snader						
66	3	281	17 319	4 1	717	
Chester Hills Farm						
R91	3	305	16 858	4 3	717	
Robert H Herr						
Faye	3	305	20,067	3 6	716	
Fancy	3	305	18,055	3 9	711	
David Bartram						
282	3	305	17 890	4 0	716	
Dennis Bush						
15	3	305	20 833	3 4	714	
Jefferson D Yoder						
88	3	305	19 483	3 7	714	
Gideon Stoltzfus Jr						
Twinkle	3	305	20 096	3 5	712	
Elvin P Graybill						
Loretta	3	305	21 587	3 3	711	
David K Stoltzfus						
18	3	305	22 563	3 1	707	
20	3	305	20 143	3 5	706	
Elvin M Rohrer						
88	3	305	16 182	4 4		
William High						
212	3	305	17 972	3 9	704	
Elmer A Mast						
Dragon	3	305	15 378	4 6	702	
Milton & Joyce Edwards						
21	3	305	17 669	4 0	701	
62	3	305	15 497	4 5	700	
Harold J Ranck						
Sunny	3	305	21 675	3 2	700	
D & I Kauffman	3	291	93 1	58 0	3 8	2 23
Jefferson D Yoder	3	63 1	93 9	57 5	3 7	2 15
Melvin Stoltzfus	3	40 7	85 7	55 3	3 8	2 11
Paul King	3	81 9	89 9	52 9	4 0	2 09
Ardorssan Farms	1	112 0	87 7	45 3	4 5	2 03

## Lancaster Farming, Saturday, January 3, 1981—C21

Merle J King	B3	85 5	85 0	48 4	4 1	1 97
Christ Stoltzfus	3	53 6	85 7	52 7	3 7	1 95
H & R Mason	3	118 6	87 9	49 7	3 9	1 92
Walmooore	B3	134 7	90 3	51 3	3 7	1 92
David E Weaver	3	83 2	87 4	49 8	3 9	1 92
David Stoltzfus	B3	42 2	86 3	50 3	3 8	1 90
John M Umber	3	46 1	80 0	47 7	3 9	1 87
Newton Evans Jr	3	70 5	91 6	53 5	3 5	1 87
Raymond Harnish	B3	75 9	87 6	48 8	3 8	1 86
Walmooore #3	B3	139 3	93 3	50 6	3 7	1 86
Dunwood Farm	3	46 0	85 8	47 8	3 9	1 85
Donald M Horning	B3	44 2	93 1	44 5	4 1	1 83
Ronald F Elliott	B3	64 5	76 6	41 5	4 4	1 82
Mast Stoltzfus	B3	52 7	85 7	46 0	3 9	1 81
V Guest & Son	B3	84 0	87 3	46 1	3 9	1 81
Herman Stoltzfus	8	47 4	88 8	48 1	3 8	1 81
Joseph S King	B3	82 8	93 0	47 0	3 8	1 80
R Proud & Son	B3	56 3	85 4	46 4	3 9	1 80
Beiler & Barlow	3	48 0	94 2	46 8	3 8	1 80
Samuel B Acker	B3	198 3	88 3	45 0	4 0	1 79
David Windle	B3	44 3	86 0	43 1	4 2	1 79
Jonas B Stoltzfus	3	43 5	77 8	46 0	3 9	1 79
George P Lamborn	3	36 0	86 4	48 6	3 7	1 78
David Bartram	G3	113 0	86 4	42 3	4 2	1 77
H Freese & Son	3	71 5	79 9	43 4	4 0	1 75
Dale Hostetter	3	50 6	88 3	47 1	3 7	1 74
Moran Bros	B3	77 4	84 7	44 5	3 9	1 73
Harold B Kulp	B3	75 5	86 0	44 2	3 9	1 73
F Miller & Son	B3	62 4	88 2	41 0	4 2	1 72
Rose View Dairies	B3	48 9	83 7	42 2	4 1	1 72
Elmer A Mast	B8	67 9	83 0	41 2	4 2	1 71
James V Yale	B3	58 6	84 5	41 8	4 1	1 70
David Walton	3	46 7	89 4	43 0	3 9	1 69
Charles H Gable	1	59 4	90 3	39 0	4 3	1 68
Kauffman Bros	3	62 8	86 4	43 2	3 9	1 67
Chester Hills Fm	B3	145 7	83 6	39 7	4 2	1 67
David L Weaver	B3	44 0	88 8	47 5	3 5	1 67
Quiet Valley Farm	8	55 9	99 7	41 9	4 0	1 66
Benjamin Kauffman	3	41 5	90 2	39 4	4 2	1 65
Richard Hostetter	B3	72 9	82 3	44 7	3 7	1 65
Joseph I Kulp	B3	49 7	71 9	43 3	3 8	1 65
Kulp Bros	G3	86 6	81 5	39 1	4 2	1 64
E Richard Hoopes	B3	92 5	89 6	43 6	3 8	1 64
G Shrohmaier	B3	98 5	81 8	40 3	4 1	1 64
Walmooore 1	B3	155 3	84 9	44 0	3 7	1 63
Timothy Kauffman	3	40 3	86 2	42 5	3 8	1 63
J Kenneth Landis	B3	45 1	97 2	41 9	3 9	1 62
Louis C Neyman	G3	35 8	86 2	39 7	4 1	1 61
Round Top Farm	B3	72 6	84 9	41 1	3 9	1 61

(Turn to Page C22)

# A Cage isn't enough



It takes more than wire to make a cage system. More than anything else it takes a feeder

Sure, other components are important, but mainly it's the feeder that makes the system. That's why Big Dutchman's Systems are equipped with a SPEED FEED chain feeder that feeds every bird the right amount at the right time, without waste.

When you compare poultry equipment remember that the real test of a cage system is its feeder. Big Dutchman is ready for the test.

Big Dutchman, where proven ideas are put into action.

Don't Settle For Anything Less Than The Original

**Big Dutchman.**

**H**  
**HERSHEY EQUIPMENT COMPANY, INC.**

SYCAMORE IND. PARK  
255 PLANE TREE DRIVE  
LANCASTER, PA 17603  
(717) 393-5807

Route 30 West At The Centerville Exit



## MEMO HAY, STRAW & EAR CORN SALE

EVERY MONDAY  
At 11 A.M.

NEW HOLLAND SALES  
STABLES, INC.

Phone 717-354-4341  
Lloyd H. Kreider, Auct.

## COMPLETE FARM PAINTING



We Use Quality PAINT

### AERIAL LADDER EQUIPMENT

- Modern and Efficient Method
- Reasonable Prices
- Spray-On and Brush-In Method
- Sandblasting If Necessary

FOR FREE ESTIMATES WRITE:

### ESH SPRAY PAINTING

(Daniel S. Esh - C. Ralph Miller)

SPRAY-ON AND BRUSH-IN PAINTER

637A Georgetown Rd.  
Ronks, PA 17572

or call this number

717-687-7007

or 717-687-8262

INDUSTRIAL COMMERCIAL RESIDENTIAL