

Livestock market and auction news



DEC. 29, 1980-JAN. 4, 1981
Ring out the old year, ring in the new!

Make only one New Year's resolution this year, but stick with it. Last quarter of the moon Dec 29. Average length of days for the week, 9 hours, 9 minutes. LBJ outlined Great Society Jan 4, 1965. Car crossed Sahara Desert in 3 days vs camel in 9 days Jan 4, 1924. Most men are like eggs — too full of themselves to hold anything else.



Ask the Old Farmer: I have a copy of my grandfather's diary which he kept during the Civil War. The first entry reads that while working in his field he spotted a recruiting officer riding by, so he "hung up his cradle" and went over to the officer. What was this "cradle"? R.C., Toledo

A "cradle" was a combination of a scythe and three or four parallel wooden arms, used to reap grain. Every sweep of the cradle made a sheaf.
Home Hints: Save the water in which potatoes are boiled and soak tarnished silverware in it for an hour. Wash and dry, and your silverware will be sparkling.

OLD FARMER'S WEATHER FORECASTS

New England: Partly cloudy and cold beginning of week, then light snow, cold north rest of week and weekend.
Greater New York-New Jersey: Rainy, becoming partially sunny, and mild through middle of week, weekend is cloudy and cold, freezing rain.
Middle Atlantic Coastal: Showers or snow, mild at week's start, then rain or sleet, cold temperatures rest of week and weekend.
Piedmont & Southeast Coastal: Mild and rainy, heavy northeast, throughout week and weekend.

(All Rights Reserved Yankee Inc. Dublin N.H. 03444)

Valley Livestock

Valley Stockyards
Athens, Pa.

Monday, December 22
Report supplied by auction
Reported receipts of 106 cows, 11 bulls, 502 calves, 14 heifers, 5 steers, 135 hogs, 36 lambs, 5 sheep. Cattle market reported higher, calf market reported some better ones higher.

Holstein Heifer Calves to 127.50; Veal Calves not enough to test market; Bobs, 90-110 lbs 75.00-100.00; Bobs, 80 and down lbs. 52.00-63.00; Grassers & Feeders 45.00-68.00; Lambs 52.00-62.00; Sheep 18.00-33.00; Hogs, 200-250 lbs. 42.00-47.00; Sows 34.00-39.00; Boars 28.00-32.00; Pigs 8.00-31.00; Heifers 47.00-55.50; Steers, medium 52.00-55.50; Steers,

feeder 54.00-61.00; Bulls 52.00-56.75; Cows, utility 47.00-49.50; Cows, fat 45.00-47.50; Cows, medium 42.00-

St. Louis Cattle

Wednesday, December 24
Report supplied by USDA
Receipts This Week: 3,000
Week Ago: 3,500
Year Ago: 1,400

Compared last week: slaughter steers and heifers mostly .50 higher. Cows 1.00 lower after price gains early Monday were later offset by declines. Bulls weak to 1.00 lower. Feeder cattle prices not tested. Supply near 50 percent slaughter steers, around 35% heifers and near 15% cows.

SLAUGHTER STEERS: Mixed Choice and Prime 2-4 1050-1300 lbs. 64.00-64.50;

part load mixed Choice and Prime 4's 1200 lbs. 61.00. Choice 2-4 950-1300 lbs. 63.00-64.00. Mixed Good and Choice 2-4 900-1200 lbs. 62.00-63.00. Good 2-3 900-1175 lbs. 60.00-62.00. Standard and Good 2-3 1050-1300 lbs. Holsteins 53.00-58.00.

SLAUGHTER HEIFERS: Mixed Choice and Prime 2-4 875-1050 lbs. 61.50-62.00, part load early Monday, 62.50. Choice 2-4 800-1050 lbs. 60.00-61.50. Mixed Good and Choice 2-3 700-1000 lbs. 58.00-60.00. Good 2-3 700-950 lbs. 56.00-58.00.

COWS: Closing sales Utility and Commercial 2-4 42.00-45.00. Boning Utility 1-2 45.00-47.00. Cutter 1-2 41.00-44.00. Canner and Low Cutter 1-2 36.00-41.00.

BULLS: Yield Grade 1-2 1050-2000 lbs. 50.00-55.00.

44.00; Cows, poor or small 36.00-41.00; Horses to 425.00; Ponies to 100.00; Goats 15.00-44.50.

Good's Hay

Leola, Pa.

Wednesday, December 24
Report supplied by auction
67 loads.

Alfalfa 111.00-156.00; Timothy 82.00-105.00, one at 124.00; one load alfalfa & orchardgrass 141.00; Mixed 94.00-121.00; one load Timothy & orchardgrass 80.00; two loads Timothy & Clover 92.00 & 115.00; one load Alfalfa & Broomegrass 100.00; Straw 54.00-67.00; Corn 121.00-124.00; Fodder 42.00-55.00; three pickups firewood 35.00-41.00.

Declining rural areas happiest with legal services

UNIVERSITY PARK — Satisfaction with legal services in rural areas of the Northeast is highest where incomes and population are both declining, according to a study in nine states.

Opinions regarding use of and satisfaction with legal services were obtained from over 2,000 interviews in selected rural areas of the Northeast. Directing the studies were social science researchers with the nine state universities of Pennsylvania, Maine, Maryland, Massachusetts, New

Hampshire, New Jersey, New York, Vermont, and West Virginia.

Researchers are not sure whether the satisfaction with legal services in areas of declining income and population is due to availability of the service or to the views of people living in such rural areas.

Charles O. Crawford of Penn State reported residents of stabilized population and income areas had "average" satisfaction with legal services.

Least satisfied with legal

services were residents of areas with expanding population and income, Dr. Crawford claimed.

"Although the effects of age were not significant, they were generally in a predicted direction" he stated. "Older persons tended to be more satisfied with legal services than younger people."

Household heads with the least education and lowest incomes in expanding sites were the least likely to use a private attorney. These people also were the most likely to experience problems in using legal services.

This suggests, Crawford commented, that the expanding sites are the ones where people in disadvantaged households experience the greatest problems in getting private legal counseling.

"This finding indicates a need for further research on the impact of an area's development status on use of services by persons from the more disadvantaged households," he stated.

And he added that educational level of household heads showed no consistent relationship to satisfaction with legal services. Like educational level of household heads, income showed no clear relationship to satisfaction with legal services.

Type of legal service was defined as "private attorney" and "other". The higher the income, the greater the likelihood of using private attorneys.

The study was a part of the Northeastern Regional Research Project NE-77, "Community Services for Nonmetropolitan People of the Northeast." Serving with Crawford from Penn State on the research team were Sam M. Cordes and Samuel M. Leadley.

The study was published as Bulletin 821 of the Agricultural Experiment Station at Penn State, under the title of "Household Use of Legal Services in Sample Northeastern Non-metropolitan Areas."

HAY AUCTION
EVERY FRIDAY - 1:30 P.M.
HORSE AUCTION - 7:30 P.M.
BEIL'S SALES
1 Mi. North of York Springs on Rt. 15
717-334-7224, David W. Martin

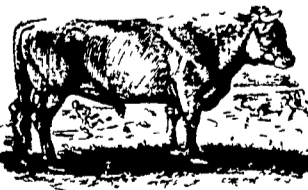
FOR SALE FEEDER PIGS
State Graded - Vet Inspected
Excellent Quality and Delivery Service
Credit Service Available
JOHN H. THOMAS, JR.
Millersville, Pa. 17551 Ph 717-872-5646
Complete Line of RED ROSE Feeds
amation Company Management Program amation FEEDS

Green Dragon Livestock Sales
1 mile North of Ephrata, PA
COWS COWS COWS
BUYERS FROM 3 STATES
Regular consignments from Bob Kennedy & Ed Stover plus 15 other local consignors.
Lots of good Northern Feeders and Stockers.
SALE EVERY FRIDAY
Bulls, Steers, Slaughter Cows, Lambs and Veal Calves.
11:00 A.M. - Beef Sale Stockers & Feeders 200 to 250 each week.
12:30 P.M. - Dairy Cows
7:00 P.M. - Small Animal Sale
For Special Sales and Herd Dispersals on the farm or at our barn or other market information call: Office 717-733-2444.
WALTER H. RISSER, Proprietor

TRANSPORTATION ON STOCK OR FEEDER CATTLE FROM THE SOUTH
We Have 2 Possum Bellied Trailer Rigs Available.
Call
VINTAGE SALES STABLES, INC.
Paradise, Pa.
L. Robert Frame, Manager
Phone: 717-768-8204 or Home: 215-458-5060
Call Anytime

Attention! Farmers
Spray Materials Im-Pruv-All Medina
Check Our Prices Before You Buy
Serving PA, MD, DE, NJ
MELVIN R. WEAVER
2213 Leabrook Road, Lancaster, PA 17601
Phone 717-898-8354 or 569-6576

HAULING NATIONWIDE
Ray R Harbold
Rd 1 Box 95
Hershey, PA 17033
PH: 717-964-2248
or 717-569-2061



HOLIDAY SCHEDULE FOR NEW HOLLAND SALES STABLES, INC.
New Holland, Penna.
Wed., Dec. 31 - Sale as usual
Thurs., Jan. 1 - Sale as usual