



Machine Work  
Welding &  
Farm Supplies  
Hardware

## D.S. MACHINE SHOP

3816 E. NEWPORT RD., RD 1 GORDONVILLE, PA 17529  
1 Mile East of Intercourse on Rt. 772  
Write or Try and Call: 717-768-8569 (Outside Phone)

- Victor or Meco Cutting Torches
- Lincoln Welders • Hog & Cattle Gates
- Custom Built High Pressure Washers
- Coal Fired Bucket-A-Day Stoves
- New & Used Structural Pipe

### SPECIALS

14 Pc. 3/8" to 1-1/4" Box & Open End  
Wrench sets ..... ea. \$31.95  
Electrical Tape ..... per roll 60¢  
10 rolls for \$5.00

## U.S.-Japan issue joint ag statement

WASHINGTON, D.C. Delegations from the United States and Japan issued the following joint statement Wednesday after completing routing consultations here on the agricultural supply and demand situation:

"The second round of Japan-U.S. talks on agricultural products was held in Washington December 9 and 10, to exchange information on the supply-demand situation in agricultural products as specified in paragraph 19 of the Japan-U.S. Joint Communique of May 2, 1979. The first round took place in Tokyo in November 1979.

"The delegation exchanged views and in-

formation primarily on wheat, feed grains, soybeans and rice.

"The U.S. delegation was headed by Dale E. Hathaway, under secretary for international affairs and commodity programs, U.S. Department of Agriculture. The head of the Japanese delegation was Akira Matsuura, director-general of the economic affairs bureau, Ministry of Agriculture, Forestry and Fisheries.

"The U.S. side elaborated the current domestic and global supply/demand situation and U.S. export outlook in wheat, feed grains, soybeans and rice and in this connection the

U.S. side also explained its agricultural policies.

"The Japanese side explained the domestic supply/demand situation in wheat, feed grains, soybeans and rice and the future import outlook for these products.

"In this connection, the Japanese side also explained the guidelines for their agricultural policies in the 1980's and the long-term outlook for the demand and production of agricultural products.

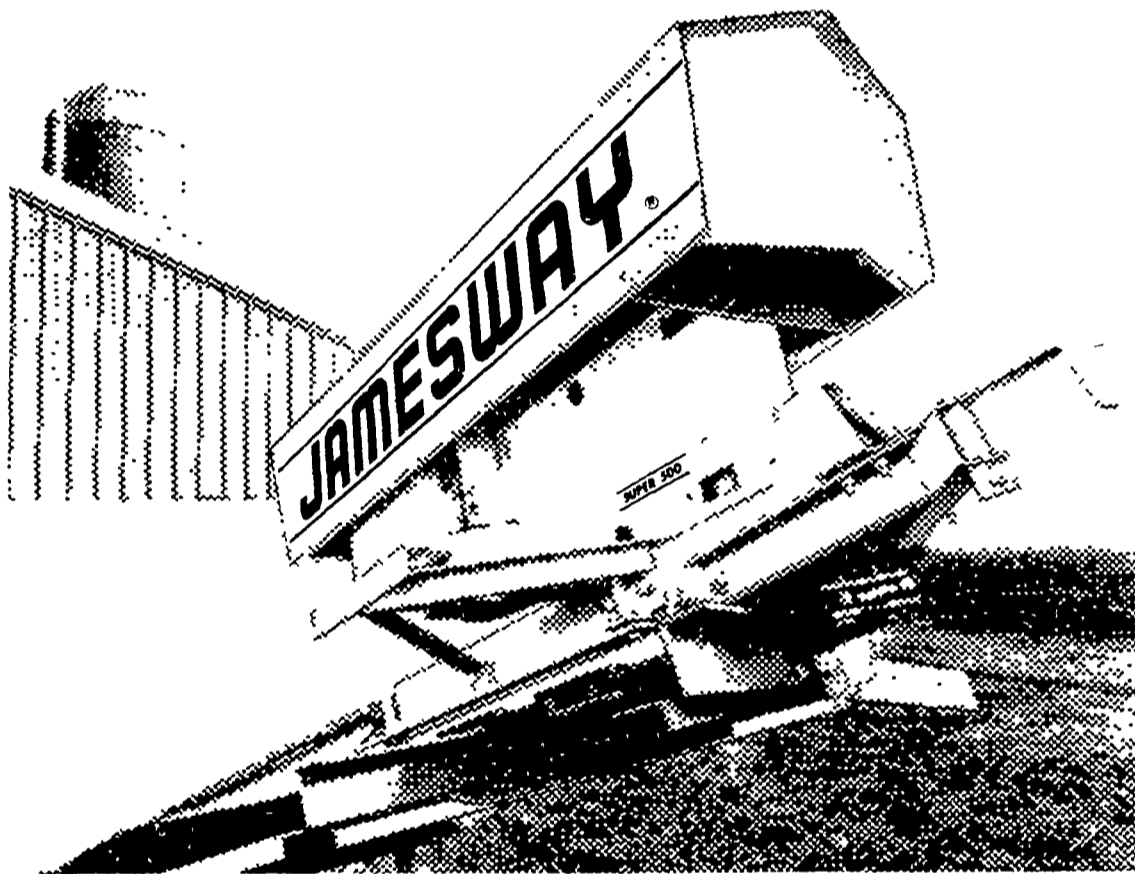
"Bearing in mind the changes in the global demand/supply situation in grains and soybeans, the Japanese requested the U.S. to continue the stable supply of wheat, feed grains and soybeans to Japan so as to

meet its demand next year. In this regard, the U.S. side said that it would cooperate closely in line with the Japan-U.S. Joint Communique of 1979 to ensure that Japan's import needs are met.

"Furthermore, responding to a Japanese inquiry, the U.S. side explained the basic policy and implementation of its long-term grain agreements with third countries.

"Both delegations, recognizing the successful outcome of the talks, expressed their views that it would be desirable to hold the next talks at an appropriate time, giving consideration to the demand/supply situation of grains and soybeans."

# JAMESWAY® barn cleaner



## Extra muscle

Keep manure on the move ... up to 23 feet per minute. Rugged, long-life spur gear drive handles 700 ft. of loaded chain. Maximum chain strength too. Barn cleaner performance you can depend on. Every day. Year after year.

See us for systems and service that help make the good life better.

### AGRI EQUIPMENT INC.

2754 Creek Hill Rd. Leola, PA 17540  
717-656-4151

### DEPENDABLE MOTORS

Honey Brook, PA  
215-273-3131  
215-273-3737

### ROVENDALE SUPPLY

RD 2, Watsonstown, PA 17777  
717-538-5521

### I. G. SALES

Rt. 113, Box 200  
Silverdale, PA  
215-257-5135

### HENRY S. LAPP

RD1, Cains, Gap, PA 17527  
717-442-8134

### SOLLENBERGER SILOS

RFD 2, Chambersburg, PA  
717-264-9588

### G. HIRAM BUCHMAN, INC.

Rte 519 - N. off Rte 46  
P.O. Box 185  
Belvidere, NJ 07823

### HARRY L. TROOP

Rt 1 Cochranville, PA 19330  
215-593-6731

### J. A. SWOPE

Box 121, RD1  
Myerstown, PA  
717-933-4758

### ERB & HENRY EQUIP., INC.

22-26 Henry Avenue  
New Berlinville, PA  
215-367-2169

### DETWILER SILO REPAIR ED LIPSCOMB EQUIPMENT

Rt. 2, Newville, PA  
717-776-7533

Rt 1, Box 321  
Eglen, WV  
304-735-6286

## Birds

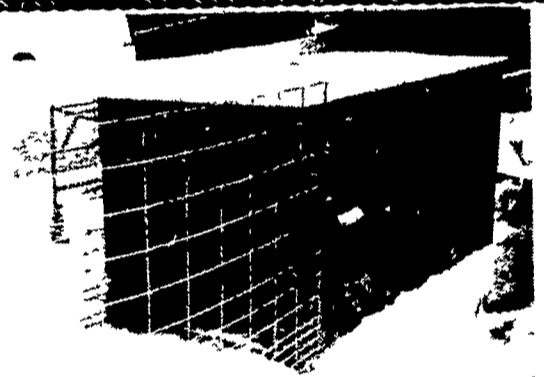
(Continued from Page D18)

larger and stronger and require more food. Also some varieties, such as the grackle, have bigger beaks, enabling them to crack and eat corn kernels, a crop starlings leave along.

The Penn State researchers found that, except for blueberry growers, more than 55 percent of the far-

mers reporting crop damage do not use any pest control technique—usually because of cost and time constraints.

Among the other 45 percent of respondents, 20 percent reported shooting birds. The rest rely on a variety of methods, which vary with crop and bird type.



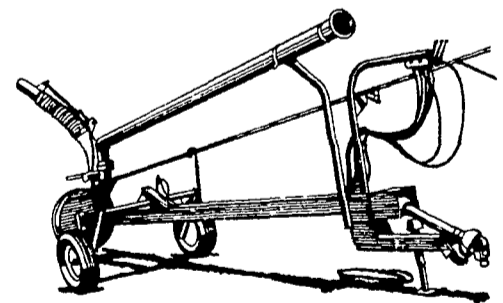
## OUTSIDE CALF HUTCHES

With Metal Roofs & Feeders  
• Painted & Creosoted

For Additional Information Write or Call:

**STOLTZFUS WOODWORK**  
RD 2, Box 2280, Gap, PA 17527  
717-442-8972

## OPEN PIT PUMP



Pumps any size lagoon with 2:1 slope wall so you don't need docks or loading platforms. Delivers 5,500 gallons per minute. Driven at 540 RPM from tractor PTO. Heavy-duty 25-inch impellor. 25' length, with optional extension to pump the deepest pits. Loading pipes and hydraulics included.

Used V2250 GSI Clay..... \$2800

CALUMET &  
NESSETH  
DISTRIBUTOR



## F. ERNEST SNOOK

RD3 - Box 84, Mifflinburg, Pa. 17844  
Phone: 717-966-2736