

Livestock market and auction news

Pa. Auction Summary

Friday, December 12
Report supplied by PDA
CATTLE: 5211. Compared with 4886 head last week, and 4863 head a year ago. Slaughter steers & heifers steady to 1.00 lower. Sl. cows & bulls 1.00-3.00 lower. Sl. steers: Choice 64.00-70.00; Good 59.00-66.00; Standard 52.00-60.00. Sl. heifers: Choice 62.00-66.00; Good 55.00-60.00. Sl. cows: Utility & Commercial 42.00-48.00;

Cutters 39.50-46.00; Canner & L. Cutter 35.00-43.00; Shells down to 25.00. Sl. bullocks: few Good & Choice 60.00-70.00. Sl. bulls: Yield Grade No. 1, 1200-2000 lbs. 55.00-64.00; few Yield Grade No. 2, 800-1400 lbs. 50.00-56.00.
FEEDER CATTLE: Steers few Medium & Large Frame No. 1, 300-600 lbs. 60.00-75.00; Large Frame No. 2, 300-700 lbs. 50.00-64.00. Heifers, Medium Frame No. 1, 400-600 lbs. 45.00-57.50.
CALVES: 4104. Compared with 4206 head last week and

3659 head a year ago. Vealers steady to strong. Few Prime 93.00-110.00; Choice 85.00-105.00; Good 75.00-90.00; 90-110 lbs. 65.00-79.00; 70-90 lbs. 58.00-68.00. Utility 55-100 lbs. 35.00-60.00.
FARM CALVES: Hol. Bulls 90-130 lbs. 75.00-110.00; Hol. Heifers 95-140 lbs. 100.00-170.00.
HOGS: 7012. Compared with 6233 head last week and 7471 head a year ago. Barrows and gilts weak to 1.50 lower. US No. 1-2 200-250 lbs. 46.50-49.50; No. 1-3 190-260 lbs. 45.00-47.50; No. 2-3 240-280 lbs. 40.00-46.00; No. 1-3 140-180 lbs. 35.00-44.00; Sows US No. 1-3 300-600 lbs. 38.00-45.00. few No. 2-3 400-700 lbs. 35.00-41.00. Boars 28.00-37.75.
FEEDER PIGS 1843. Compared with 931 head last week and 1665 head a year ago. Feeder Pigs steady. US No. 1-3 25-35 lbs. 9.00-25.00 per head; No. 1-3 35-50 lbs. 15.00-32.00; few No. 1-3 50-70 lbs. 25.00-38.00.
GRADED FEEDER PIGS: 4534. Compared with

2567 head last week, and 4082 head a year ago. All sales by CWT. Feeder Pigs 5.00-25.00 lower. US No. 1-2 30-40 lbs. 55.00-90.00, few 95.50, 40-50 lbs. 50.00-90.00, 50-60 lbs. 46.00-85.00, 60-70 lbs. 40.00-70.00; US No. 2-3 20-30 lbs. 40.00-60.00, 30-40 lbs. 42.00-55.00, 40-50 lbs. 39.00-65.00, 50-70 lbs. 40.00-58.00.
SHEEP: 712. Compared with 346 head last week and 430 head a year ago. Woolled sl. lambs 3.00-5.00 lower. Choice 60-115 lbs. 53.00-63.00; Good 50-100 lbs. 50.00-59.00. Sl. ewes: 9.00-31.00.

62.25, Good 61.75-66.50, Standard 56.50-62.00. Few Choice 900-1135 lbs. slaughter heifers 62.00-65.00, few Good 52.00-60.00. Utility & Commercial slaughter cows 46.25-48.00, few to 50.75, Cutters 43.00-46.50, Canner & Low Cutter 38.00-42.85. Couple Choice slaughter bullocks 69.50 and 71.75, few Good 60.00-65.25, few Standard 57.25-58.75. Few Yield Grade #1 1140-1275 lbs. slaughter bulls 58.50-61.25; few yield grade #2 950-1400 lbs. 46.00-52.50. Large & Medium #1 350-600 lbs. feeder steers 60.75-72.50, one small 74.50, Large Frame #2 730-850 lbs. 50.00-55.25; few Medium Frame #1 400-545 lbs. feeder heifers 50.00-52.00.
CALVES 161. Vealers grading Standard & Low Good steady. Few Choice vealers 91.00-96.00, Good 80.00-91.00, Standard & Good 90-110 lbs. 60.00-68.00, few 70-85 lbs. 50.00-60.00, few Utility 35-95 lbs. 35.00-50.00. Farm calves, holstein bulls 90-135 lbs. 90.00-112.00, few down to 75.00; holstein heifers 85-140 lbs. 120.00-137.50, one at 147.50.
HOGS 308. Barrows & gilts \$1 to \$1.50 lower. US No. 1-2 200-250 lbs. barrows & gilts 46.00-47.85, mostly 46.50-47.00, No. 1-3 190-260 lbs. 45.00-46.50, few No. 2-3 265-280 lbs. 44.50-45.00. Sows \$1 higher. US No. 1-3 300-575 lbs. sows 42.00-45.25, few down to 38.00, few Utility 260-400 lbs. 32.50-37.00. Boars 33.00-35.00.
FEEDER PIGS 358. US No. 1-3 25-55 lbs. feeder pigs 50.00-73.00, one lot 76.00 cwt., one lot No. 1-3 158 lbs. 38.50, Utility 30-65 lbs. 35.00-45.00 cwt.
SHEEP 83. Choice 75-110 lbs. woolled slaughter lambs 52.00-62.00, few 120-150 lbs. 47.50-50.00, few Choice fall lambs 50-65 lbs. 91.00-106.00; few Good & Choice 50-80 lbs. woolled slaughter lambs 55.00-73.00. Slaughter ewes 17.00-31.00.
GOATS 21. All goats sold by the head 35.00-50.00, one at 62.50.

Oklahoma Cattle

Thursday, December 11
Report supplied by USDA
Estimated Receipts 5400
Same Day Last Week 8158
Fairly active; feeder steers over 500 lbs. steady to weak; steers under 500 lbs. and feeder heifers fully steady. Majority receipts medium frame no. 1 400-800 lbs. feeder steers and 300-700 lbs. heifers. Fairly large buyer attendance.

FEEDER STEERS: Medium Frame No. 1 few 240-290 lbs. 85.00-86.50; 300-400 lbs. 79.25-84.50, lot 369 lbs. 86.30; 400-500 lbs. 76.25-82.50, mostly 78.00-82.00, two lots 440-443 lbs. thin 83.50-84.25; 500-600 lbs. 73.50-77.50, lot 532 lbs. 78.25; 600-700 lbs. 70.75-73.50, two lots 601-650 lbs. 74.50-75.00; 700-800 lbs. 69.50-73.00, part load 824 lbs. 69.80.
Medium Frame No. 1-2 lot 275 lbs. 82.90; 390-500 lbs. 73.00-76.50; 500-600 lbs. 71.50-74.50; 625-840 lbs. 66.25-69.00, lot 660 lbs. thin 74.10.
Large Frame No. 2 Holsteins lot 370 lbs. 61.00; 440-610 lbs. 57.25-60.00, lot 785 lbs. 55.40.

FEEDER HEIFERS: Medium Frame No. 1, two lots 280-288 lbs. 69.50-72.60; 300-400 lbs. 68.25-71.00; 400-500 lbs. 63.00-68.50, mostly 63.75-68.00, part load 497 lbs. 70.05; 500-700 lbs. 62.25-68.00, mostly 63.00-67.00; lot 715 lbs. 66.50.
Medium Frame No. 1-2 400-600 lbs. 61.50-63.50, load 440 lbs. thin 66.00; lot 740 lbs. 58.70.
Medium and Large Frame No. 2 lot 390 lbs. 62.50; 450-635 lbs. 57.75-61.00.

FOR THE WEEK: Feeder steers and heifers closed the week steady to \$1.00 lower; slaughter cows \$2.00-3.00 lower; late sales include Utility and Commercial 2-3 41.00-43.25; Cutter 1-2 39.00-40.50, lot 1080 lbs. holsteins 42.00; few Canners 33.25-34.75. Slaughter bulls generally steady. Yield Grade 1-2 1015-1525 lbs. 52.25-58.00, three head yield grade 2 1170 lbs. 46.25. Salable receipts this week near 15,500 head compared with 25,385 head last week. Feeder steers and heifers totaled near 13,800 head (89 percent)

Leesport Auction

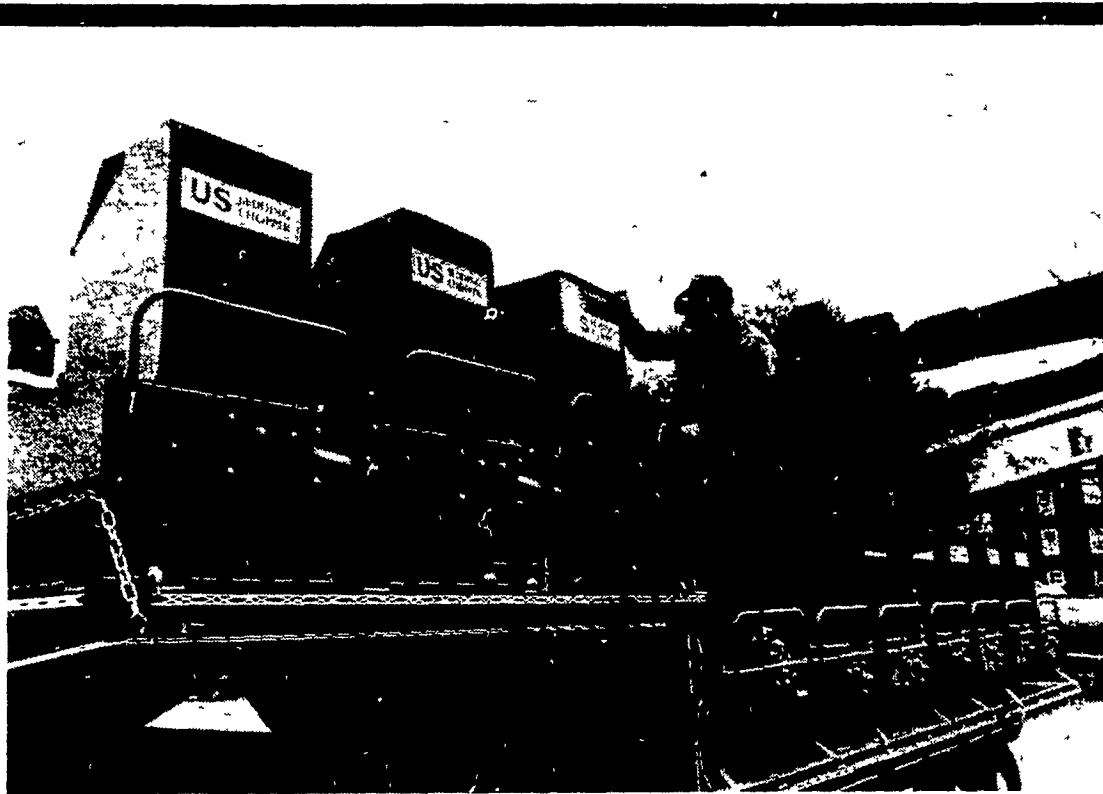
Leesport, Pa.
Wednesday, December 10
Report supplied by PDA
CATTLE 279. Compared with last Wednesday's market, slaughter steers steady to \$2 lower. Slaughter cows 75 cents to \$2 lower. Choice 900-1200 lbs. slaughter steers 65.50-68.75, one at 69.00, Good & Choice holsteins 1300-1560 lbs. 58.50-

TRANSPORTATION ON STOCK OR FEEDER CATTLE FROM THE SOUTH

We Have 2 Possum Bellied Trailer Rigs Available.

VINTAGE SALES STABLES, INC.

Paradise, Pa.
L. Robert Frame, Manager
Phone: 717-768-8204 or Home: 215-458-5060
Call Anytime



TAKE A TOUGH-BUILT, RED BEDDING CHOPPER FROM OUR TRUCK

And Put It To Work In Your Own Dairy Barn

When you have cows, you want them to be comfortable and clean. And you don't want to spend your total milk check to pay for bedding. That's why in the past several weeks, a growing number of smart dairymen in Pennsylvania have turned to the science-engineered red bedding chopper from US Farm Systems of Pennsylvania.

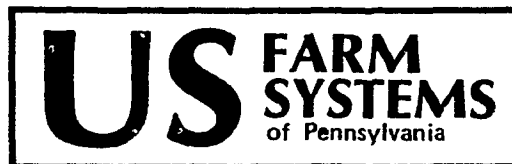
While chopping bales of straw and old hay into short lengths, this practical machine fluffs the material into liquid-absorbent bedding that your farm neighbors say uses a lot less straw. No more saw dust to hold mastitis germs under the cow. No more long straw to shake out and clog your liquid manure system.

Designed for the modern dairy farm, the tough-built red bedding chopper eats full bales of straw and old hay with ease.

And blows out finely chopped bedding onto the cows' stalls right where you want it. Powered by your choice of electric or gasoline motor, the chopper turns on a dime. You can move along a row of free stalls or tie stalls fast enough to be 70 cows in 20 minutes. Blow bedding into calf pens or dry cow box stalls.

With winter work here to cause you extra bedding and manure handling problems, be smart. Take a tough-built red bedding chopper from our truck and put it to work in your own dairy barn.

For a free on-the farm demonstration with no obligation, write to our home office:



4070 Blue Ball Road, Nottingham, PA 19362
Ph: (301) 398-2948

DEALER INQUIRIES INVITED

Special Feeder Pig Sale

Tuesday, December 9
Report supplied by VDA

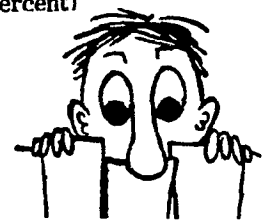
There were 3,206 head sold. All pigs were graded by Representatives of the VDACS's Division of Markets, Livestock Section on USDA standards and sold by the hundredweight.

US 1-2's 30-39 lbs. 48.00-52.00, 40-49 lbs. 46.50; 50-59 lbs. 51.00; 60-69 lbs. 58.50-59.00; 70-79 lbs. 54.50-55.50; 80-110 lbs. 51.00.

US 3's 30-39 lbs. 43.00; 40-49 lbs. 44.00; 50-59 lbs. 47.00; 60-69 lbs. 55.00; 70-79 lbs. 49.00; 80-110 lbs. 48.00-51.50.

Utility 30-39 lbs. 36.00; 40-49 lbs. 37.00.

US 4's 30-39 lbs. 37.50; 40-49 lbs. 43.00.



LOOKING FOR A NEW TASTE?

Read Home On The Range and Junior Cooking Edition

FOR SALE FEEDER PIGS

State Graded - Vet Inspected
Excellent Quality and Delivery Service
Credit Service Available

JOHN H. THOMAS, JR.

Millersville, Pa. 17551 Ph 717-872-5646

Complete Line of RED ROSE Feeds

Management Program

Red Rose SWINE FEED