

Grain export executive outlines new grain priorities

COLUMBUS, OH — A grain export executive Monday spelled out new priorities facing U.S. agriculture policy planners as they assess domestic requirements and overseas market opportunities.

Myron R. Laserson, senior vice president-merchandising, World Grain Division, Continental Grain Company, told a meeting of the Ohio

Corn Growers Association here that growing emphasis on gasohol production and sugar substitutes may bring about a drastic revision in marketing U.S. commodities.

"If gasohol production increases as now projected," he said, "we may be confronted by a real need to decide between feeding our

animal herds and our automobiles."

While recognizing the need to develop alternative and domestic sources of energy, he questioned the implications.

"Can we continue - through preferential tax treatment or outright subsidy - the production of gasohol from grain to be used in the vehicles on the

parking lots of our cities if it means denying food to our friends and customers overseas or changing our eating habits at home?"

According to Laserson, the fundamental issues are "who is going to establish control, how the rules will be written and how and where they will be applied."

He noted policy makers will correctly label inflation

as a major problem and stressed the importance of encouraging greater and more efficient production so that economics of scale can keep the price of food affordable.

"Remember," he continued, "a marketplace expanding on a rationally-constituted basis works better than anything else to promote production and

keep abundant food supplies available to all Americans."

Laserson called for increasing attention to food requirements of undeveloped and developing nations by leaders of this country and top officials of those nations.

"The impoverished of the world will not be immobilized forever," he said.

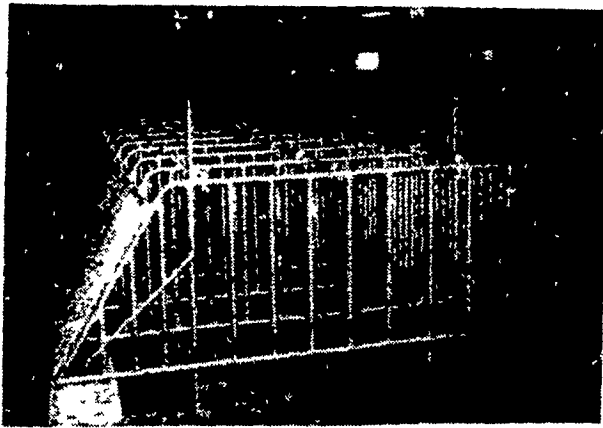
Designers of The Best In Hog Confinement Equipment Systems

ON THE FARM HOG UNITS

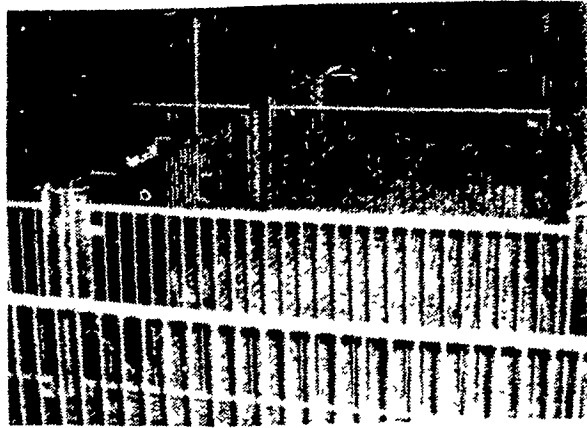
LET US SHOW YOU

GESTATION and FARROWING FINISHING

Rohn Agri Products



GESTATION

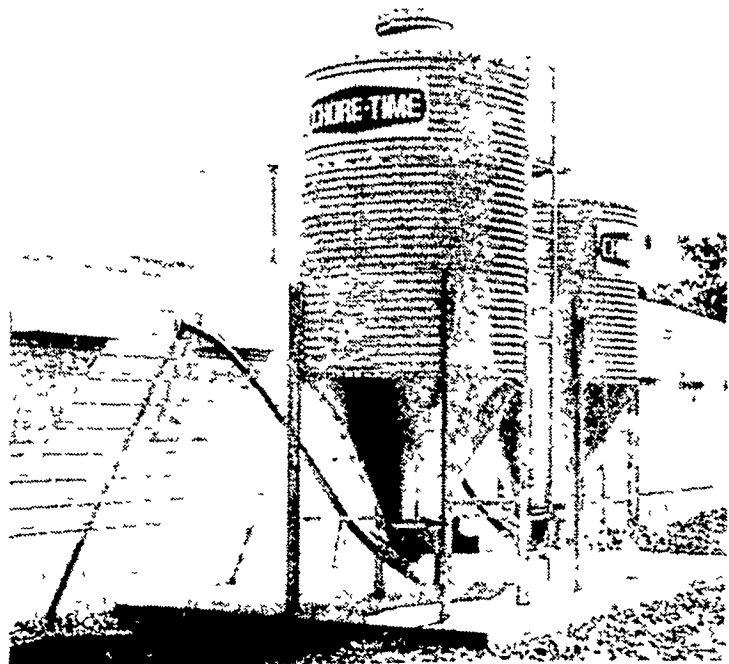


NURSERY

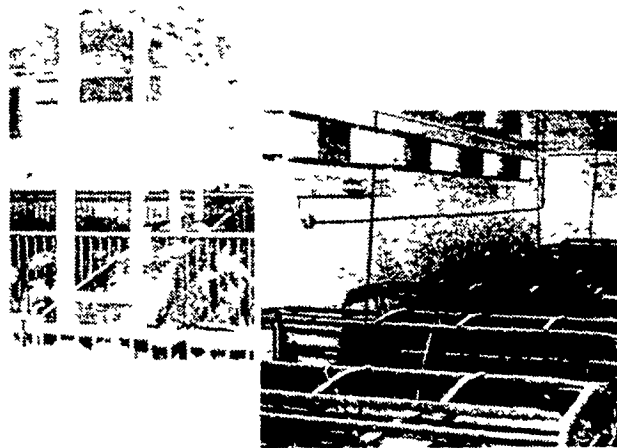


FARROWING

the systems that make hogs **SUPER THRIFTY ...SUPER PROFITABLE...SUPER EASY TO RAISE**

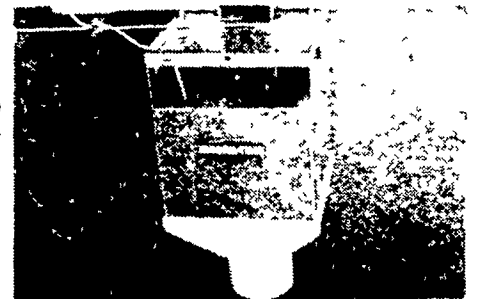


COMPLETELY GALVANIZED BINS



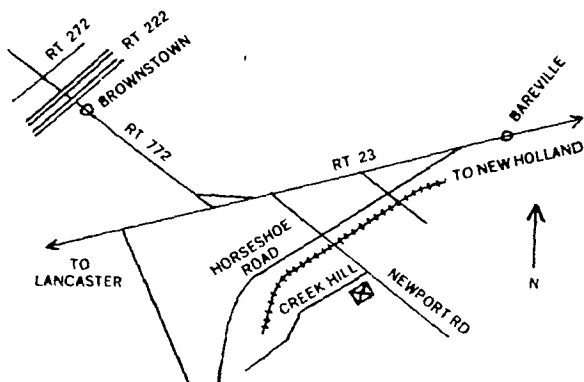
ventilation . . .

Keep animals comfortable, and you keep them far more thrifty and far more profitable. Chore-Time's Advanced Air Systems approach combines controlled air inlets with the finest variable speed and single speed fans and other components. They're fitted to your specific building. The result is year-around, day-in and day-out comfort for your animals.



sow feeding . . .

Taking gestating sows out of the "maddening crowd" and putting them into their own individual stalls with a Chore-Time feeding system is the way to bigger litters, better litters, more litters from each sow, and more money for you to keep. Farmers can get back \$16 or more for every dollar invested in a Chore-Time Sow Feeding System.



CATTLE — HOG — POULTRY EQUIPMENT
2754 CREEK HILL RD., LEOLA, PA 17540
PHONE: 717-656-4151

★ SERVING PA, N.J. and N.Y.

AGRI-EQUIPMENT, INC.
OFFERS COMPLETE SALES,
INSTALLATION, SERVICE

STORE HOURS
 Mon. - Fri.
 7:30 to 5:00
 Sat 7:30 to 11:30