

Using poultry manure as fertilizer

LANCASTER — Floods due to surface water or leaking waterers may have caused poultry manure to become wet. Poultry manure should be kept dry if possible during storage then spread as frequently as possible and turned down a short time later. Be sure to disc in manure 60 days or more before planting

Poultry manure can be applied to cropland as a fertilizer supplement, says Lancaster County Agent Jay Irwin

Application rates can be obtained from The Agronomy Guide or Special Circular 146, Profitable Use of Poultry Manure, which is available at the county

agent's office

If one figures the value of nitrogen, phosphorus, and potash in a ton of poultry manure, we find a ton of fresh manure is worth at least \$13 a ton, while dry manure is worth \$40 or more a ton as a fertilizer. In a few cases, dried poultry manure is selling for \$60 per ton if it has been dried by the Bressler Stage I and Stage II drying system

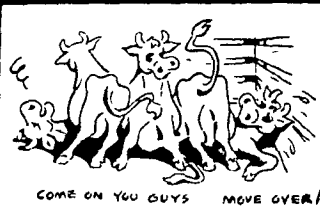
Poultrymen using it on their own farms may find it helps reduce their fertilizer bills to one-fourth, says Irwin. Selling surplus supplies of manure will provide extra income. Poultry manure is most valuable when dried in the poultry

house before it is spread. When poultry manure is dried in the poultry house, shortly after it drops, there are three major advantages

The odor of the dry manure is cut down to a very low level and is not as bothersome to neighbors

The fertilizer value of dry manure is much greater per ton than liquid or wet manure, while wet manure produces toxic gas giving bird and man an unpleasant environment. This gas can be lethal

The total weight of dry manure is one-third to one-eighth the total weight of wet or liquid manure, so there is less weight to haul on the field, adds Irwin



NEED MORE ROOM? Read The Classified Real Estate Ads

PUBLIC AUCTION

of Two Lancaster County Farms

Farm No. 1: 67.198 Acre Dairy and Tobacco Farm

Farm No. 2: 53.625 Acre Steer and Tobacco Farm

SATURDAY, DECEMBER 20, 1980

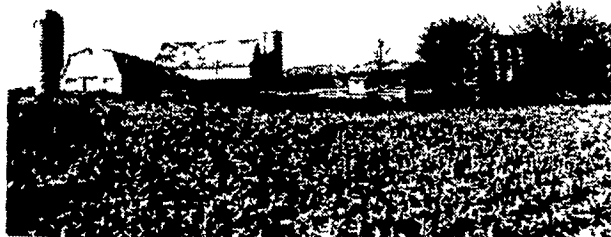
2:00 P.M.

Location: Just North of Denver in West Cocalico Township, Lancaster County, Pennsylvania.

ATTENTION: Make plans now to inspect these very fine farms. These adjoining farms would provide a golden opportunity for the large operator or for any individual wanting to purchase just one farm. Auction to be held on Farm No. 1

**FARM NUMBER 1:
67.198 ACRE DAIRY AND TOBACCO FARM**
Limestone Soil

**FARM NUMBER 2:
53.625 ACRE STEER AND TOBACCO FARM**
Gravel Soil



2½ Story Frame Dwelling

Containing Kitchen with built-in cabinets, large living room, family room, laundry room, 5 bedrooms and full bath, attic storage. Oil hot air heat

66 x 30 2-Story Bank Barn
53 x 37 2-Story Cow Barn

With bulk feed bin and attached 14 x 15 block milkhouse. 14 x 55 concrete stone silo with unloader

66 x 25 Frame Tobacco Shed

With stripping room and dampening cellar

33 x 44 Frame Equipment Shed

- Well with pressure system
- Cocalico Creek runs through pasture area
- Established shade
- Cistern

Directions To Farm: Take Route 272 North from Ephrata to traffic light at Reamstown — turn left towards Denver to traffic light in Denver — turn left onto South Fourth Street to Franklin Street — turn right — go out of town to second farm on right

AUCTION CONDUCTED BY:

JOHN E. and PAUL E. MARTIN
AUCTIONEERS
717 - 733-3511 — 717 - 733-3305
EPHRATA, PA

HARTMAN, UNDERHILL & BRUBAKER, ATTORNEYS
GEORGE BRUBAKER, ATTORNEY

NOTE: Inspection of dwellings at Open House Saturday, December 6 and Wednesday, December 10, 1980 from 12:00 noon to 3:00 p.m. Inspection of balance of farm anytime. For transportation or a personal showing call Paul E. Martin, Auctioneer at 717 - 733-3305. All information in this ad is believed to be accurate, but is being used for advertising purposes only.

TERMS: 10% down day of Auction, balance at final settlement on or before April 1, 1981



2½ Story Brick Dwelling

Containing Kitchen with built-in cabinets, formal dining room, large living room, den with open stairway, 4 bedrooms, full bath, attic storage, oil hot air heat

69 x 42 2-Story Bank Barn
40 x 36 Frame Tobacco Shed
30 x 29 Equipment and Corn Shed

20 x 17 Corn Shed
Frame 2-Car Garage

- Wire Corncrib
- Several other small buildings
- Well with pressure system
- Cocalico Creek runs through edge of farm
- Established shade

Directions To Farm: Take Route 272 North from Ephrata to traffic light at Reamstown — turn left toward Denver — go through Denver — after crossing bridge outside of town first farm on left across from Denver Park

AUCTION BY ORDER OF:

MAHLON N. ZIMMERMAN
R. D. 2, EPHRATA, PA
717 - 859-1127

Public Sales Register

Closing Date - Monday, 5:00 P.M. of each week's publication

DECEMBER

SAT DEC 13 1:00 P.M. Public Sale of Real Estate, Located approx 12 miles south of Harrisburg, PA. Take Exit 13 Off I 83, West on Rt 382, 2 miles to York Rd, turn left and proceed ¼ mile to Miller Rd, turn left ¼ mile to Parcels of Land K D Williams Owner Lee Dockey Auctioneer

SAT DEC 13 2:00 P.M. Public Sale of Real Estate Located in Salisbury Twp, Lancaster Co. PA. Samuel E. and Rachel L. Stoltzfus Steve Petersheim and Everett Kreider Auctioneers

SAT DEC 13 1:00 P.M. Public Sale of Valuable Real Estate, Modern Home and Buildings Located at 2600 Siegrist Rd, 6 miles east of Lancaster off Rt 340 Owner Florence Groff Ron Funk Auctioneer

SAT DEC 13 11:30 A.M. Public Sale of New Quilts New & Used Furniture Benefit Schoeneck Volunteer Fire Co. Take Rt 272 north from Ephrata to Schoeneck Rd follow Schoeneck Rd to Village of Schoeneck, Lancaster Co. PA. John E. & Paul E. Martin and Horning Farm Agency Auctioneers

SAT DEC 13 9:30 A.M. Public Sale of Restaurant Equipment Office Equipment Etc. Located at the Hanover Diner Restaurant Carlisle Street Extended, Hanover, PA along Rt 94 north and 3 miles south of Cross Keys Dewey and June James R E Kehr Auctioneer

SAT DEC 13 4:00 P.M. Ridge Way Auctions Emeline S. Hevel Estate of Household and Antiques Located Rd 1 Palmyra, PA north on Railroad St west on Ridge Rd Ralph B Heise Auctioneer

SAT DEC 13 9:30 A.M. Auction of Farm Equipment and Household Held in Benton, Rd 2, on Rt 487 north of Benton (4 miles) BBCT Co Administrator for Emma Lehet and Escrow John Autotore and John Jr Auctioneers

SAT DEC 13 9:00 A.M. Public Sale of Equipment Located at 26 Harrison Ave, Englishtown, NJ. Towne Tractor Co Managers, Jack Wootton and John Kachmar Auctioneers

SAT DEC 13 10:00 A.M. Public Sale of Personal property and Antiques Located 126 Main St Bernville Berks Co, PA. John H. Bixler Owner Paul E. Bixler and Gerald G. Kramer Auctioneers

MON DEC 15 9:30 A.M. Consignment Sale Located at S Race St, Myerstown, Pa 17067 Sale held by Wengers Farm Machinery, Inc.

MON DEC 15 2 P.M. Danville Livestock Market, cattle and hog auction. Located Old Route 11 Danville PA. Melvin M. Lehman owner

FRI DEC 15 12:00 Noon Sale at New Holland Sales Stables

TUES DEC 16 12:00 Hours Dispersal Located 4½ miles northeast of Shippenburg, Cumberland Co PA or 4 miles southwest of Newville along Rt 533, leave Rt 81 at Newville Exit or King St exit Mrs Warren Merkel Owner Ralph W. Horst Auctioneer and sale manager

WED DEC 17 6 P.M. Public Sale of New Tool for Farm, Shop, Lawn & Garden Located at Smoketown Quality Dairy Sales Barn along Rt 340, 5 miles East of Lancaster Sale by A K King Auctioneers Carl & John Diller

PUBLIC SALE

SATURDAY, DECEMBER 27, 1980

10:00 A.M.

(16) FARM TRACTORS - (1) DOZER - (1) TRUCK - (40) FARM IMPLEMENTS - (1) FORKLIFT

Located 11 miles South of Seneca Falls, N.Y. on rte. 89.

(16) FARM TRACTORS: Int 4186 - Cab - Atr - 3pt - PTO - ROPS - 600 hours - excellent, Case 1470, Cab, 3 pt, low hours, nice, Farmall 856 Diesel w/2200 hours, nice, Farmall 1206 w/cab, new paint, nice, A C 5050 Diesel, 600 hours, nice, Case 1030 CK Diesel, new paint, nice, Case 930 CC Diesel, new paint, nice, J D 4320, new paint, new tires; Farmall 706 Diesel, new paint, Farmall 656 gas; J D 2020 gas utility, Long 560 Diesel, like new, M F 85 Diesel, J D 820 2 cyl Diesel w/cab, new paint; Int 460 w/loader, Farmall C42x plow

(1) DOZER - ACHD6 dozer, operating condition

(1) FORKLIFT - Case 585 Diesel, hydrostatic - 5000 lb - 14' lift

(1) TRUCK - 1974 Ford 8000 Louisville w/cat Diesel engine and 24' Jerr-dann rollback body, excellent, new tag-a-long trailer - 4 ton

USED MACHINERY - Int 720 reset plow 6x18" nice, White wing disc, like new, Int 40 blade; wheel disc, like new, Long 10' heavy offset disc, like new J D 1209 haybine, NH 467 haybine (nice), N H 451 3 pt mower used 1 season, N H 770 harvester w/2x30 cornhead & late style pickup head, wide Dunham cultipacker, IH 400 Cyclo planter 4-x Nice, Ford 2x3 pt cornplanter, J D 2x3 pt cornplanter, M F 4x3 pt plow, (2) Fox hopper blowers, Ford snow plow, Ford 3 pt blade, 18 4x34 axle duals w/lubs

NEW MACHINERY - 5' 3pt rotary mower 6'3 pt blade, 7'3 pt blade, cement mixer, gravity bin, 5-8-10 ton wagon gears, 12" post hole digger, 6'6" 3 pt disc, 3 pt boom poles, 4'-5'-6'-7' landscape boxes, Tarps (all sizes), mechanics tools

NOTE: This is a nice selection of nice equipment - come on time because very few small items

Terms Cash or 25% sale day and balance by Jan 3rd, 1981 and prior to removal from premises. A few items due to daily change

Auctioneer: Fred Goodrich
Newark Valley, N Y

Auction By Order Of

WENGERS FARM MACH. INC.

For More Information Call

717-866-2135 (Lloyd)

315-549-7140 (Leon)

607-642-8688 (Fred Goodrich)