

## Nat'l Shorthorn Assn. to meet in January

OMAHA, Neb. — The National Western Livestock Show, held in Denver, Co., will be the site for national activities for the American Shorthorn Association as it conducts its annual meeting and National Shorthorn Show & Sale, January 15-18, according to Ron Hofstrand, president.

Well over 300 head of cattle from the top competitive herds of Shorthorns and Polled Shorthorns from the U.S. and Canada are expected to compete for top honors in the National Show on January 18, with class competition beginning on the

National Western grounds at 9 a.m.

The National Shorthorn Show will be using a three-man composite judging system with J.W. Brune, general manager of Wingert Stock Farm, Ottawa, Ks., Don Hutzler of the Northern Ohio Breeders' Association, Tiffin, Oh., and George Ellis of Beartooth Ranch, Columbus, Mt.; serving as the team of officials.

Show classes for the cattle entered in pen competition will be held in the stockyards area on Friday afternoon, January 16, beginning at 1 p.m.

The National Western will be the site for a National Shorthorn Sale as well, with a top offering of select seedstock from superior herds across the country. The show for sale entries is scheduled for 8 a.m. on January 17 with the sale conducted that evening at 7 p.m. Sale arrangements are being handled by Cagwin Cattle Services, Inc., of Virginia, Il.

Hofstrand said the Association's business meeting is scheduled for Friday, January 16, at the Denver Hilton, beginning at 9 a.m. Agenda highlights will include the election of national officers and three directors' seats.

Directors whose terms are expiring include L. Eugene Byers, Loudonville, Oh., Merl Welch, Elkhart, Il., and F.A. Heckendorf, Jr., Castle Rock, Co. Byers will retire from the board with Welch and Heckendorf eligible for reelection.

Other important business activities will include informal discussion sessions between the general membership and the board of directors, evaluation of breed direction into the 1980's and discussions involving the policies, public relations and advertising promotion programs of the Association.

Hofstrand said that recognition will be given to Shorthorn and Polled Shorthorn producers during the Friday evening banquet

with the presentation of awards that include Herd Sire of the Year, Century Club winners; Junior Breeder of the Year and the announcement of the three recipients of the Shorthorn Foundation-Don Longley Memorial Scholarships to members of the American Junior Shorthorn Association.

The National Shorthorn Lassies, women's auxiliary of the breed association, will be having their national annual meeting the same dates as well. Tours, luncheons, and a variety of other activities that will commemorate the 25th anniversary of the organization are planned along with their Friday meeting, according to Marge Tribbett of Lenden, In, national Lassie president.

The activities will also include the crowning of the National Shorthorn Lassie Queen which will be done at the annual Friday evening banquet.

According to Wilma Russell, Fullerton, Ne., coordinator of the event, 17 young ladies will be traveling to Denver as their state Lassie Queens to vie for the national crown now worn by Lisa McAnear of Clarendon, Tx.

In summing up the details of the Denver meetings, show and sale, Hofstrand said these 1981 national events will offer the Association the time to evaluate the direction and

activities of the breed through long-range planning.

It will also be an opportunity, he said, to show

the development the breed — the first improved beef breed to be imported to this country, dating back to Virginia in 1783.

## Del. fruit growers to meet Thursday

WYOMING, Del. — There will be an all-day workshop for Delaware's commercial peach and apple producers Thursday, December 18.

The program starts at 10 a.m. at Fifer's Orchard in Wyoming with demonstrations on orchard trees by Rutgers University extension fruit specialist Ernie Christ and extension plant pathologist Jack Springer.

The group will then move to Anthony's Restaurant in Wyoming for lunch and the afternoon session, which concludes at 3:30 p.m.

The program will include

updates on disease and insect control, varieties, and cultural practices for the commercial production of peaches and apples.

All commercial growers of these fruit crops are encouraged to attend, as well as any farmers who are considering going into their production.

The workshop is sponsored by the Delaware Extension Service.

For further information, contact Kent County agricultural agent Ed Kee at 302/736-4675.

## Bradford Co. DHIA

(Continued from Page D7)

Farm Name	3	4	305	18 490	762
Pet Roypa Farm					
Chris	3	4	305	18 490	762
Stuart Wrisley					
4451	3	2	305	16 462	710
Romaine & Jeff Sechrist					
Lou	3	8	305	19 334	715
James & Diane Elvidge					
Arlinda	3	7	305	18,229	719
Mattie	3	3	284	18 050	736
Spooky	3	4	305	16,180	722
Lil	3	6	305	21 820	793

### CENTRAL HEAT FROM WOOD-COAL

(or Oil or Gas)



- Our Multifuel heating system automatically switches from one fuel to the other. It heats your house and your hot water Safely Reliably.
- You choose the most economical fuel. Or the most convenient. Either way, you're secure. Multifuel hot-water heat is the modern way to beat the energy crisis.



## HS-TARM

Central Heat from Wood-COAL

EFFECTIVE ENERGY  
Mt Holly NJ 08060  
Ph 609-234-8443

SCANDAMERICA STOVES  
Staffordville NJ 08092  
Ph 609-597-8545

THE BOILER ROOM  
Whippany NJ 07981  
Ph 201-887-2403

SCANDIA STOVES  
Kutztown Pa 19530  
Ph 215-683-5810

#### DEALERS:

SUSQUEHANNA STOVE  
Brogue PA 17309  
717 927 9214

CHIMNEY CORNERS  
Brodheads ville Pa 18322  
Ph 717 992-6640

ALTERNATIVE ENERGY SYSTEMS  
381 E Jackson St  
New Holland PA 17557  
717 354-0412

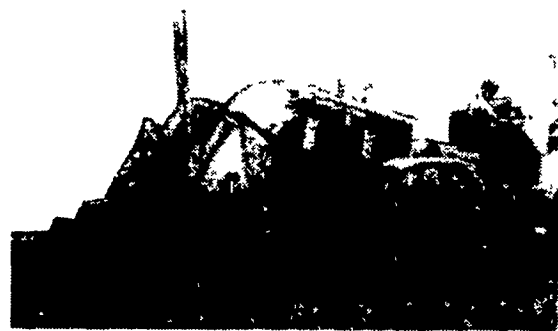
THE STOVE MAN  
Rt. 100 Eagle,  
Uwchland Pa 19480  
215-458-5408

CURRY'S  
848 W Chocolate Ave  
Hershey PA 17033  
717 533 9184

HERR OIL & GAS  
Rt 61  
Shamokin PA 17872  
717-644-0854

Distributed by Heat Shed Inc., Revere PA  
PH: 215-847-2041

## DRAINAGE PROBLEMS?



### COCALICO EQUIPMENT HAS THE TWO MACHINES TO HANDLE YOUR DRAINAGE PROBLEMS.

★ Both Machines Equipped with Laser Beam Grade Control

#### Drainage Pays High Returns

Investment	Typical Annual Return
Land Drainage	21-46%
Farm Buildings	3-23%
Farm Land	.11%
Stocks	7.4%
Bonds	.6.1%

#### COMPARE

Even with the conservative figures shown here, it's obvious that land drainage should top farmers' lists of investment priorities.

★ We Stock Heavy Grade Tubing which Exceeds SCS Specifications. In sizes 4", 6", 8", 10" and 12".

NOW AVAILABLE  
15" & 18" Tubing

★ Also Pipe And Fittings For Tile Outlet Terraces.



## COCALICO EQUIPMENT CO.

DRAINAGE & EXCAVATING

RD #3, DENVER, PA 17517

PH: 215-267-3808