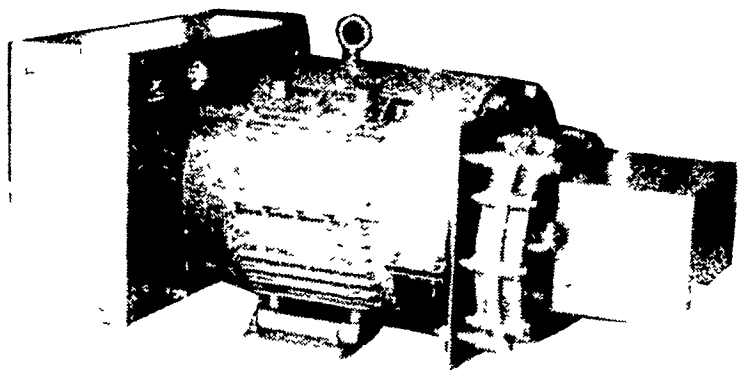
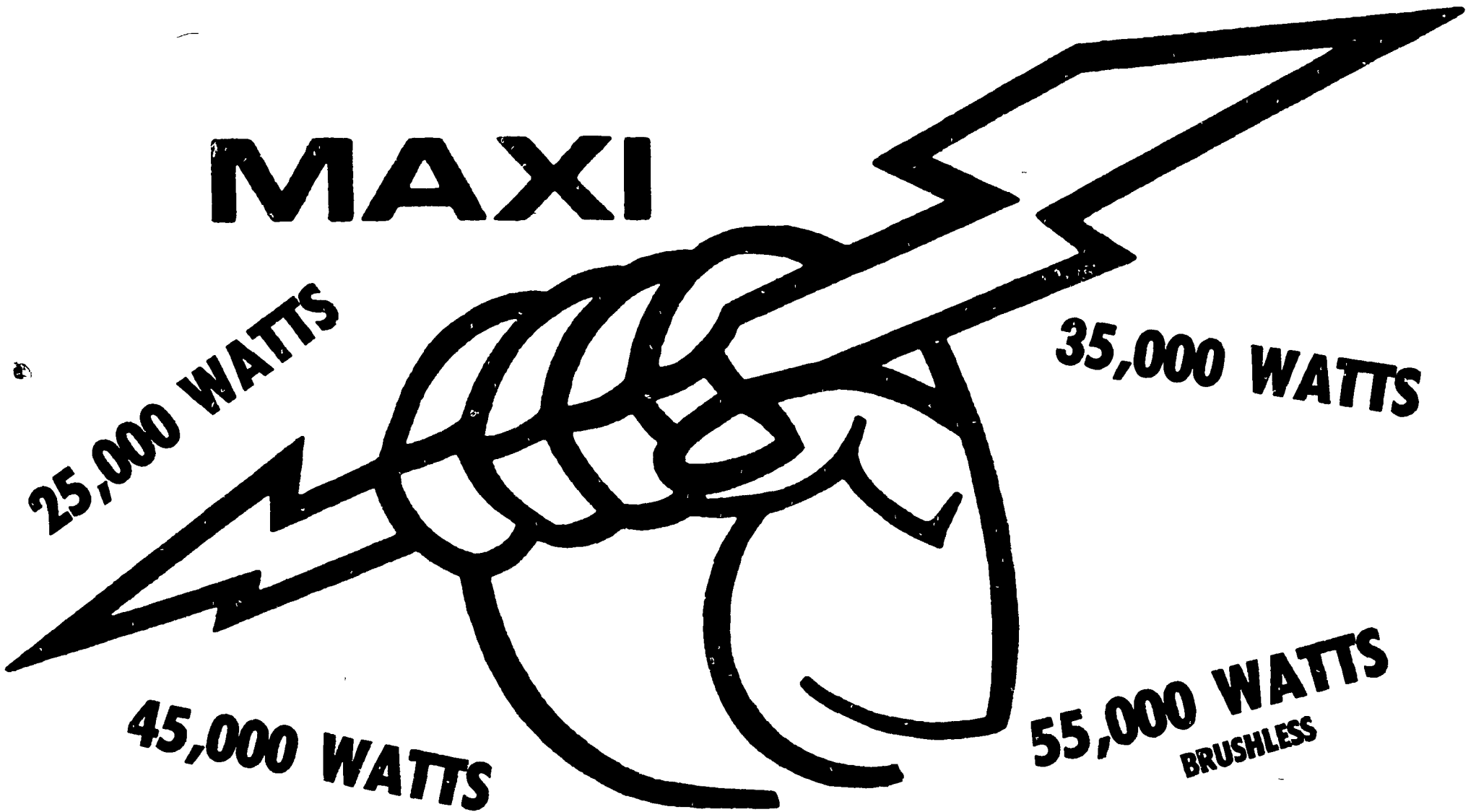


INTRODUCING...

MAXI



POWER PTO GENERATORS

- Special design full load main output plug
- Patented long life all weather bearing system
- Accurate generator over-load protection
- Every MAXI-POWER generator is fully tested and recorded before shipment
- All copper windings
- Rated to industrial continuous duty standards
- Permanent magnets in rotor for quick response for field build-up
- Precision machined helical gear drive
- Interchangeable gear box 540/1000 RPM

**OVER 35 UNITS IN STOCK
FOR IMMEDIATE DELIVERY
OR DEMONSTRATION.**

- Color coded volt meter easily visible from tractor
- All controls and receptacles are inside weather protected cover
- Maximum motor starting ability per KW
- Designed for continuous duty 24 hours a day industrial use
- Overload protection breaker
- 2% voltage regulation-no load to full load
- Trouble free electronic excitation
- Four pole rotating field design at 1800 RPM
- Cast aluminum frame
- Direct drive cooling fan
- Ground Lug
- Drip proof design
- Safety shield
- Rodent screen

- Convenient lifting eye
- Welder receptical
- Grounded duplex recepticals
- All recepticals have circuit breakers
- All weather bearings
- Three year limited warranty to original purchaser

OPTIONAL ACCESSORIES:

- Off road trailers
- Power shafts
- Manual transfer switches
- Electrical cords
- Completely brushless units. Consult factory for motor starting characteristics and voltage dip specifications

MAXI-POWER

DIVISION OF LEONARD MARTIN CO.
330 FONDERWHITE ROAD
LEBANON, PA 17042

717-274-1483

★ RADIO DISPATCHED TRUCKS ★ 24 HOUR SERVICE

Mail Coupon to: MAXI-POWER
330 Fonderwhite Rd.,
Lebanon, PA 17042

- I would like more information on Maxi-Power Generators
- I would like your salesman to contact me
- I would like a free analysis of my electrical needs

NAME _____
ADDRESS _____
CITY _____
STATE _____ ZIP _____
PHONE _____

