

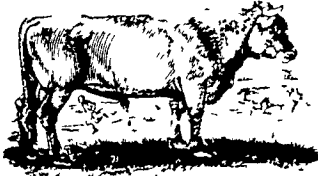


THE OLD FARMER'S ALMANAC

DEC. 8-14, 1980

Cold and snow, a heavy blow

Get Christmas cards ready for mailing Damon Runyon died Dec 10, 1946 First quarter of the moon Dec 14 Average length of days for the week, 9 hours 7 minutes Golf tee patented Dec 12, 1899 Sale of tires stopped to American public for war effort Dec 12 1941 *He who fears death does not enjoy life*



Ask the Old Farmer. Can you tell me where burlap got names such as gunnysack, crocus sack and guano sack? T.J., Newport N.H.

Burlap is the material woven from jute, hemp or flax. There is little difference in crocus material. But there is a difference in the weave. A guano sack is a fine and close weave. A coffee sack is heavier, with yarns several times as large as those used for bran. Gunnysacks come from India.

Home Hints: To make the job of varnishing easier, place the container of varnish in a pan of hot water. The varnish flows on easier and dries faster.

OLD FARMER'S WEATHER FORECASTS

New England: Warming days and cold nights most of week, then mild, with showers through weekend.
Greater New York-New Jersey: Week begins sunny and seasonal, then snowstorm north, rain south, weekend mostly sunny.
Middle Atlantic Coastal: Rain, snow, west, and cold throughout the week and weekend.
Piedmont & Southeast Coastal: Hard freeze, light snow beginning through end of week.

(All Rights Reserved Yankee, Inc. Dublin N.H. 03444)

Lancaster Feeder Cattle

Friday, November 28
Report supplied by USDA

Today 328
Last Friday 517
Last Year 435

TREND: Compared to last Friday steers 1.00-2.00 lower. Supply included few lots of 8-15 head, although bulk of supply sold in lots of three or less.

FEEDER STEERS:
MEDIUM FRAME 1: One lot 655 lbs. 73.25; couple lots 700-760 lbs 66.50-67.75; one lot 910 lbs. 66.25.

MEDIUM FRAME 1-2: Few lots 515-670 lbs 65.50-67.50; couple lots 710-835 lbs 63.50-63.75.

LARGE FRAME 1-2: Few lots 845-1060 lbs. 59.00-62.00.
LARGE FRAME 2
HOLSTEINS Couple lots 800-910 lbs. 50.85-53.10

New Holland Horse

Monday, December 1
New Holland Sales Stables
Report supplied by auction
Reported receipts of 271 head of horses, mules, and ponies. Market steady.

Better horses 550.00-960.00; Driving horses 375.00-1050.00; Riding horses 375.00-500.00; Lightweight killers 375.00-475.00, Heavyweight killers 525.00-650.00, Mares 45.00-85.00, Colts 25.00-50.00, Geldings 45.00-85.00, Larger ponies 125.00-175.00

Central U.S. Carlot

Wednesday, December 3
Report supplied by USDA
Compared to Tuesday's 4:30 report. Late sales 2.00 lower on choice steer beef and 1.00 lower on choice heifer beef. Demand and trading very light. Supplies more than adequate for demand on both carcasses and cuts. The boxed beef carcass cutout value declined \$.51 per cwt to \$106.87. Sales reported on 97 loads of steer and heifer beef.

STEER BEEF

64 Loads
FOB Omaha Basis
 Choice 3: 600-900 lbs. 98.00-100.00, 2.00 lower late, 98.00 late.

Choice 4: 600-900 lbs. 86.00 early, steady
 Good 2-3: 600-900 lbs. 97.00, steady

Good 2-3: 600-900 lbs. 94.00 (Hols)
FOB Amarillo Basis
 Choice 2-3: 500-700 lbs YG 3 100.50-102.50, YG 2 101.50-104.00

HEIFER BEEF

33 Loads
FOB Omaha Basis
 Choice 3: 500-700 lbs 96.00-97.00, 1.00 lower late, late 96.00.

Choice 4: 500-700 lbs 85.00 early, steady
 Good 2-3: 500-700 lbs. 95.00, steady

Cow beef steady-1.00 lower but not well tested. Both demand and supply light.

COW BEEF

3 Loads
FOB Omaha Basis
 Utility 3-4: 450 & up lbs 77.50 (West), 1.00 lower (BKR)

Canner & Cutter 350 & up lbs 90.00 (Southwest) steady 1-2

FOB Amarillo Basis
 Canner & Cutter 350 & up lbs 90.50 1-2

PRIMAL BEEF CUTS
 10 Loads
FOB Omaha Basis
HINDS (H) 120-170 lbs. 105.00
FORES. 130-210 lbs 91.50
BONELESS PROCESSING BEEF/BEEF TRIMMINGS

15 Loads
FOB Omaha Basis
 90% chem lean frozen 129.00
 50% chem lean fresh 66.00-67.00, 1.00-1.50 dn
 Compared to Tuesday's 2:15 report. Fresh pork loins firm, 17-20 lbs steady, 20&up lbs 50 lower. Boston butts 4-8 lbs steady. Fresh hams 17-20 lbs. 2.00 lower, 20-26 lbs steady. Sdls. belhes steady-1.00 lower. Trading & demand moderate. Sales reported on 57 loads and six (6) loads of trimmings and variety meats.

FRESH PORK CUTS
LOINS: 14-17 lbs. 88.00-89.00, steady-firm, 14-17 lbs 85.50 next week ship, 17-20 lbs 84.50 steady; 17-22 lbs. 84.50; 20&up lbs 80.00, 50 higher.

BOSTON BUTTS 4-8 lbs 78.00, steady.
SPARERIBS 3/nd lbs 98.00 frozen

SKINNED HAMS 17-20 lbs. 81.00, 2.00 lower, 20-26 lbs. 78.00 steady.

BELLIES, SDLS 10-12 lbs. 56.50; 12-14 lbs. 61.50, 50

lower, 14-16 lbs. 61.50-62.50 steady, 16-18 lbs 59.00-59.50, 50-1.00 lower

VARIETY MEATS
STOMACH, SCALDED. lrg box 19.50
CHITTERLINGS, PREFERRERED. 52.00.
SKINNED JOWLS 42.50 frozen

PORK TRIMMINGS BONELESS PROCESSING PORK (Chemical Lean)
 42% lean trimmings fresh 49.00
 42% lean trimmings frzn 50.00
 72% lean trimmings trzn 86.50

Indiana Auction

Thursday, December 4
 Report supplied by PDA
CATTLE: 101. Sl. steers few Choice 43.50-47.75, few Good 56.00-57.75, one Standard 53.75. Sl. heifers one Good at 53.00; few Standard 47.00-50.50, few Utility 44.00-46.50. Sl. cows Utility & Commercial 45.00-48.00, Cutters 43.00-46.00, Canner & L. Cutter 38.00-44.00, Shells down to 30.00. Sl. bulls. few Yield Grade No 1 & 2 95.00-115.00 lbs 52.00-54.50

FEEDER CATTLE
 Steers, Medium & Large Frame No. 2, 450-700 lbs. 53.75-56.00. Heifers, Medium Frame No. 2 300-450 lbs.

54.00-58.00 with one at 65.00. Feeder bulls, Medium Frame No. 2 500-750 lbs 50.00-60.00

CALVES 156 Few Choice 90.00-102.00; few Good 75.00-90.00. 90-120 lbs 65.00-75.00, 70-90 lbs 58.00-68.00, Utility 55-130 lbs 50.00-60.00

FARM CALVES Hol Bulls 85-120 lbs 70.00-95.00, Hol Heifers 75-115 lbs 75.00-110.00. Beef Cross Bulls & Heifers 75-110 lbs 70.00-90.00.

HOGS 113 No. 1-3 200-250 lbs 46.25-48.00, few No 2-3 250-300 lbs 43.50-45.00. US No 1-3 300-500 lbs 40.00-46.75. Boars 32.00-34.50

FEEDER PIGS 40. US No 1-3 35-40 lbs 11.00-14.50 per head, No 1-3 45-65 lbs 19.00-25.00

SHEEP 14 Few Choice 85-90 lbs 62.00-66.00, Good 70-80 lbs 54.00-55.00. Sl ewes 32.50

BEEFALO FOR SALE
 -Semen in stock
 -1/2, 3/4, 7/8 - animals
BEEFALO N & J
 4270
 Quakerbridge Rd.
 Princeton, NJ 08540
609-896-0336

SMUCKER'S SALES & SERVICE
 RD #2, BOX 21
 NEW HOLLAND, PA 17557

DISTRIBUTOR FOR:
LISTER, PERKINS & SLANZI DIESELS

The Deutz 912 series engines are different because they have direct fuel injection!

2 Cyl F2L-912

We Have SR2 12 h.p. Lister Diesels, as is or rebuilt.

- Good used diesel engines
- New Sputnik wheels and parts

We mount diesels on balers, crimpers, cornpickers, etc.

Install a blower fan for better diesel & refrigeration cooling. Longer life on diesel.

LET ME BREATHE!

For lower cost per hour power, rely on

DIESEL POWER

WE ARE NOW ALSO AN AUTHORIZED DEALER FOR DEUTZ DIESELS 3 h.p. to 450 h.p.

FOR PROMPT SERVICE CALL 717-354-4158 OR IF NO ANSWER CALL 717-354-4374.

APOLLO
 VARIETY ALFALFA

BEATS "WET FOOT DISEASE."
 First "proprietary" alfalfa variety with resistance to Phytophthora root rot that delivers consistently good yields.

- Resistance to Phytophthora root rot (wet foot disease)
- Produces stands where other varieties fail
- Excellent winterhardness
- Good recovery after cutting
- More resistance to pea aphids and leafhopper yellowing than Vernal or Saranac
- Yields well even when Phytophthora not present

P. L. ROHRER & BRO., INC.
 SMOKETOWN, PA PH 717-299-2571

Division of North American Plant Breeders