

Mel Hertzler, familiar to area farmers from his work at Allen Dairy in Mechanicsburg and six years with the Holstein Association's international activities, will manage the Harrisburg Holstein Association office.

Meet the new Area manager

HARRISBURG — Mel Hertzler, the Holstein Association's Area I manager, is no stranger to many Pennsylvania dairymen.

They know him not only from his past work with the Holstein Association but also from the time he spent working at Allen Dairy near Mechanicsburg.

Mel was born and reared at R2 Elizabethtown, and spent 20 years growing up around cows.

When he set out on his own he moved to the famous Green Meadow Farms in Elsie, Michigan.

Green Meadow is the largest registered Holstein

herd in the world. He worked there as herdsman for two years before returning to his home state.

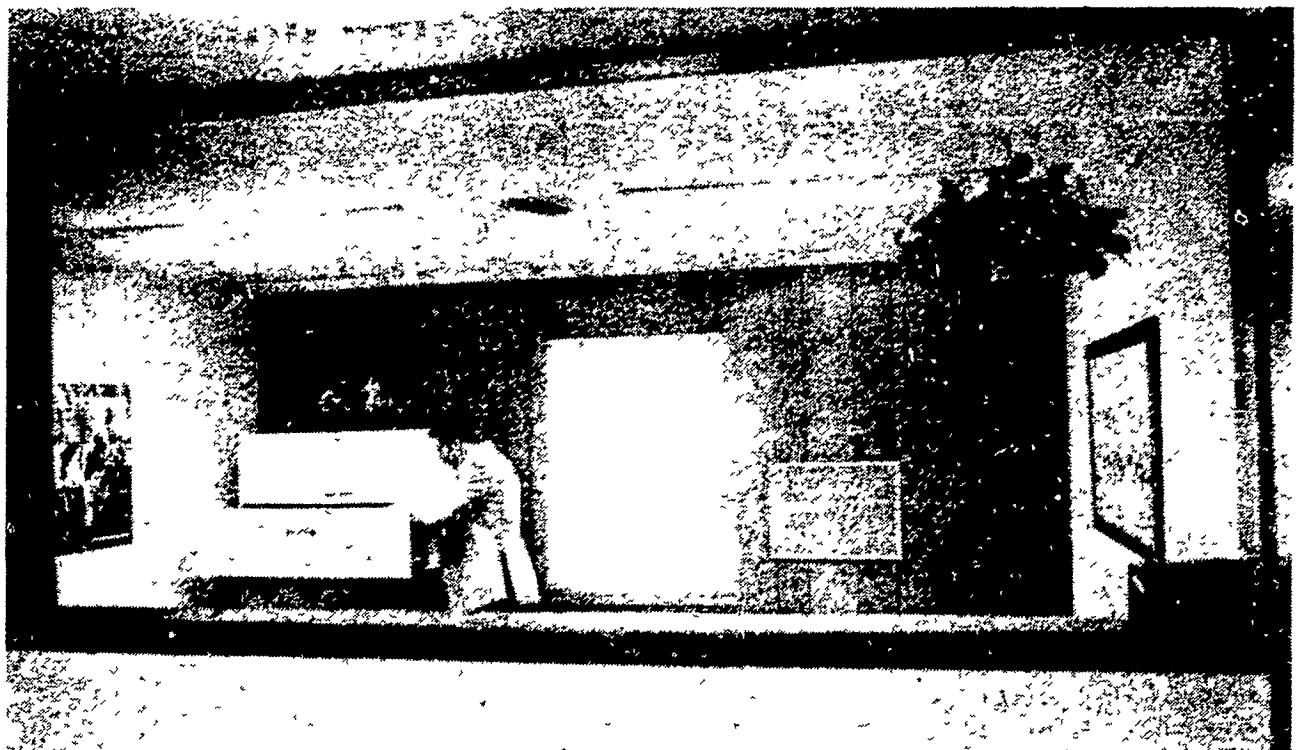
He came back to Pennsylvania to spend 11 years at Allen Dairy in Mechanicsburg. Then came an offer to go to Florida.

"Southern Florida seemed like a really great place to go with all the sunshine and nice weather," Mel smiles.

So he packed his bags for Macarthur's Dairy in Okeechobee.

At the time Macarthur's was the largest commercial dairy in the world. It boasted four units of 2200 cows each.

Hertzler was in charge of one of the milking units. But



The Holstein Association Area office in Harrisburg is a bright, spacious office which will be the nerve center of Association activities in the 14

Eastern States. A computer terminal will be installed which will give local members access to information stored at present in Vermont.

Regional office

(Continued from Page A28)

knowledge of cows and the system with her to work.

A second secretary will be added when the computer terminal from Vermont is

installed in the Area office.

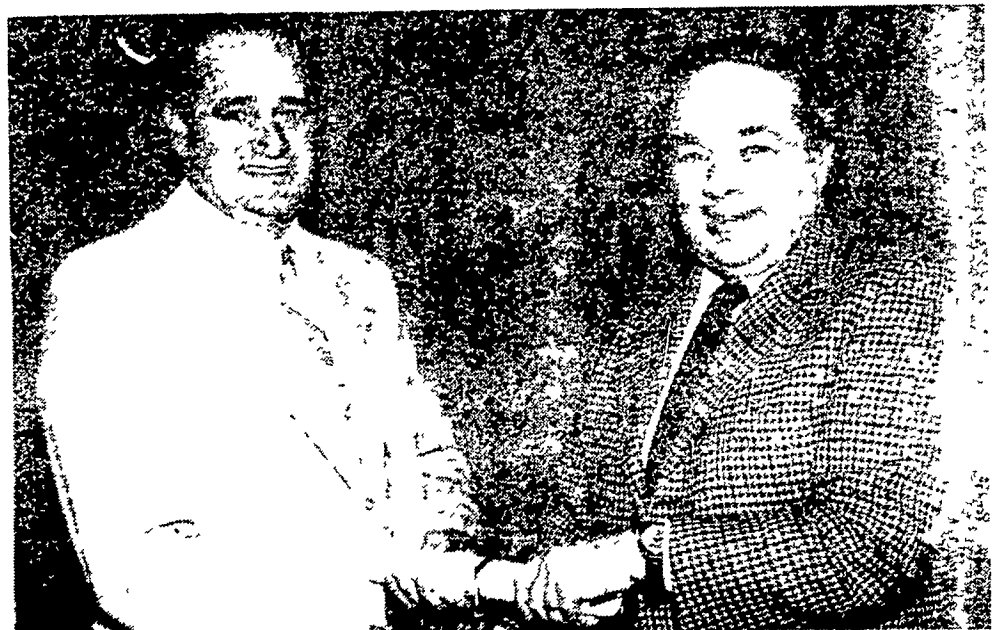
This will allow local people access to cow histories and other data without having to send a farmer to Vermont for the information.

For dairymen, contact with the Area office will be

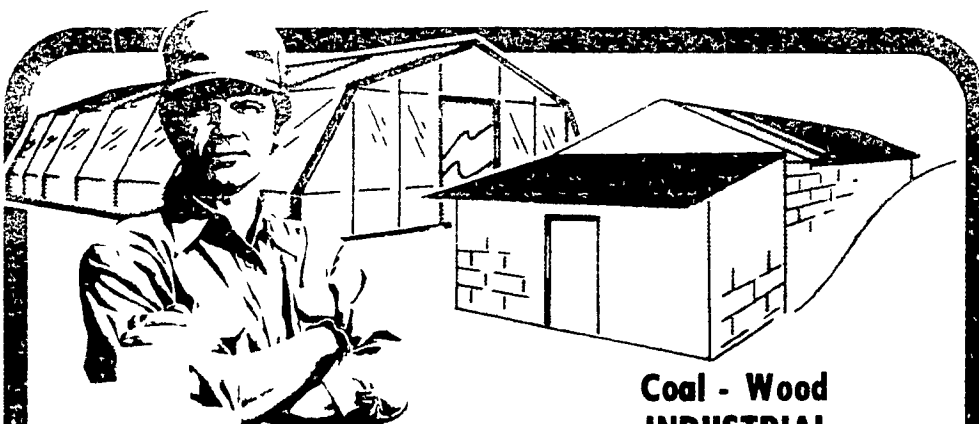
as close as the telephone. The Harrisburg office can be reached at 717/657-8800.

Visitors are welcome at any time, Hertzler says, but the Association plans to welcome all farmers to an open house sometime shortly after the new office officially starts operations January 1.

Receives merit award



C. Rodman Myers, left, of Thurmont, Md., receives scroll and a handshake as he was honored with the Certificate of Merit Award in Agriculture during the 15th annual Maryland Agricultural Leaders Forum at the University of Maryland. Making the presentation is Robert L. Gluckstern, chancellor of the College Park campus. Myers is master of the Maryland State Grange and editor of the organization's monthly newsletter. An active dairy farmer, he was named by the Maryland Jaycees in 1968 as the state's Outstanding Young Farmer.



Coal - Wood INDUSTRIAL BOILERS

- GREENHOUSES
- MUSHROOM BUILDINGS
- POULTRY HOUSES

More and more Commercial and Industrial High Volume Hot Water users are turning to ESHLAND Coal and Wood Boilers to supply their hot water and heating needs. Built for efficiency and durability, these units can greatly reduce fuel costs.

Eshland's Rotary Grate system allows efficient burning of different coal grades and sizes as well as wood.

Write or Call today!

ESHLAND ENTERPRISES INC.

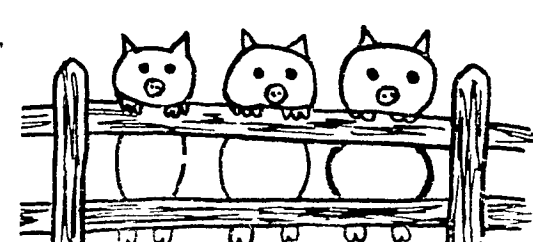
P.O. BOX 23 GREENCASTLE, PA 17225
 Pa. 1-800-632 1896 U.S.A. 1-800-233 1993
 Manufacturers of Boilers, Hot Air Furnaces, Freestanding stoves & Fireplace inserts

DEALER INQUIRIES INVITED


SOYBEAN ROASTING ON YOUR FARM

DON'T WASTE IT — ROAST IT

This little piggy went to market,
 This little piggy stayed home,
 This little piggy had



ROASTED SOYBEANS



Make higher profits from all grains, roasting improves TDN, destroys molds and retards toxins and removes moisture.

CUSTOM GRAIN ROASTING DONE IN PA AND SURROUNDING STATES

DALE L. SCHNUPP

RD 6, Lebanon, Pa 17042 Ph: 717-865-6611

DAVID N. GROFF
 RD 1, Box 506C
 Lewisburg, PA 17837

ALLEN SUMMERS
 RD #1, Box 152-C
 Nottingham, Pa. 19362