

Chester Co. DHIA

(Continued from Page D23)

Rhelda	305	20 500	3 5	716
Major	305	19,799	3 6	716
John S Stoltzfus				
Judy	305	24 881	3 8	939
Darla	305	20,112	4 0	803
Fiddle	305	17,583	4 2	734
Robert E Pepple				
80	305	27 300	3 4	937
88	305	23 296	3 8	889
60	305	21 692	3 9	846
56	305	18 158	4 6	831
10	305	17 146	4 5	767
65	291	14,672	5 2	758
Merle J King				
Rene	245	22 959	4 1	930
Elsie	305	23 094	3 8	870
Terry	305	19 315	4 5	866
Fiber	305	26 106	3 2	842
Lea	305	22,150	3 5	773
Arlene	305	21 290	3 5	748
Gladys	305	20,245	3 6	722
Richard Proud & Son				
152	305	25 670	3 6	914
160	305	20,252	3 7	757
B8	305	17,683	4 1	726
Willowland Farm				
Liz	305	23 531	3 9	909
Lottie	305	23 277	3 6	841
Oda	305	20,580	4 1	836
Rainbow	305	19 022	4 3	827
Opal	305	22 348	3 6	805
Harvey C Waltz				
36	305	21 399	4 2	905
3	305	21,930	3 8	841
102	305	21,552	3 8	826
79	305	22,447	3 5	780
30	305	20 578	3 8	773
103	267	19,315	3 8	736
58	305	20 600	3 5	719
David E Weaver				
Primer	305	22 192	4 0	898
Sally	305	20 848	3 6	750
Louis C Neyman				
24	305	20 246	4 4	889
Jonas B Stoltzfus				
Ada	305	21 960	4 0	876
Vernon Guest & Son				
Carla	305	23 012	3 8	874
Bonnie	305	21 938	3 7	818
Gwen	305	19,588	4 1	804
Rachele	305	20,594	3 7	756
Diana	305	17 231	4 1	710
Newton Evans Jr				
180	300	20 355	4 3	869
Androssan Farms				
Aroster	305	19 885	4 4	867
C Prem	305	19 916	3 9	776
Ssbrite	305	19 826	3 7	739
Allen Lilly				
443	305	19 609	4 4	867
Kittie	305	23,621	3 3	789
Breck A De Farm				
64	305	24,134	3 6	862
83	305	22 469	3 6	798
Harold R Kulp				
Neon	305	21,517	4 0	860
Witter	305	15 886	4 5	720
Walmoore #2				
935	305	28 068	3 1	858
731	305	21 744	3 6	778
David Bartram				
9	305	17 980	4 7	845
221	305	19 315	3 8	733

Sheep feeding meeting Tuesday

LANSDALE — Feed costs are a major portion of your sheep production production bills.

Have you noticed the higher costs for feed this year? Do you want to be sure you are not overfeeding your sheep and therefore wasting money? Do you know how to meet the nutritional needs of lactating ewes, rams during the breeding season, lambs, pregnant ewes or yearlings?

If you want the answers to these questions then come to a sheep producers meeting to be held on Tuesday, December 9, 7:30 p.m. at the Montgomery County 4-H Center near Lansdale. Speaker for the evening will be Mike Fournier, Bucks County extension agent.

The 4-H Center is located on Route 363 between Sumnertown Pike and Allentown Road near Lansdale. For more information or directions call County Agent Nancy M. Kadwill at 215/277-0574.

The meeting is open to anyone interested in doing an more efficient job of feeding their sheep.

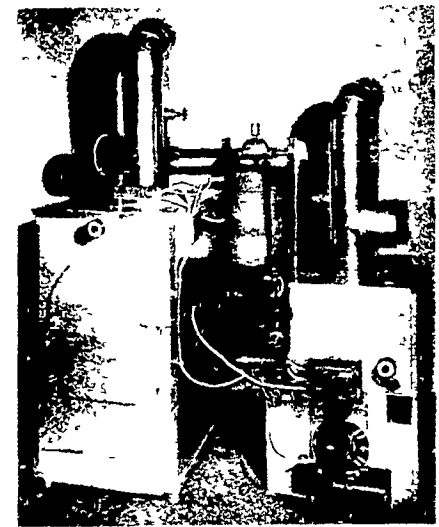


MEMCO® MW100 "THE TRUE DUAL SOLID FUEL BOILER"

First, Leading The Way

Patent #3,177,827 Tested & Approved E T L M

- 1 50-gallon water volume for safety and efficiency
- 2 Large fill door "17x22"
- 3 DUAL SOLID FUEL SHAKER GRATE (control front burn separate from rear), two separate shaking actions give maximum efficiency for wood, coal or wood-coal combination burning
- 4 Removable ash pan, entire length of MW100
- 5 Wet leg design, water surrounds combustion chamber plus wet flue baffle
- 6 6GPM domestic hot water coil optional



- May be used separately or manifold to existing boiler
- Combination systems available in Oil-Gas-Electric Boilers as back up for maximum safety and efficiency

PENDEL HEARTH & HOME

123 Pennsylvania Avenue

Avondale, Pa. 19311

Telephone: 215-268-8222

Hours: Tuesday thru Friday 12 - 5 and 7 - 9

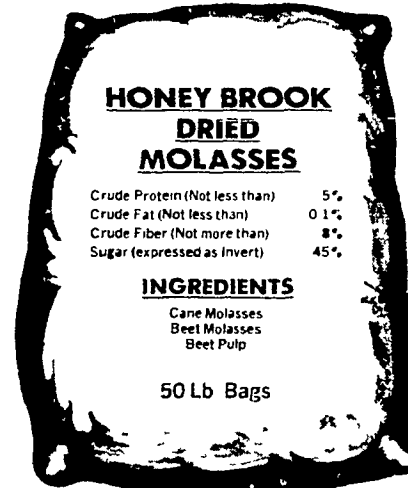
Saturday 10 - 5

Dealer Inquiries Invited

MEMCO

ZOOK MOLASSES CO. ONE STOP FOR ANIMAL FEEDING MOLASSES

HONEY BROOK LIQUID & DRIED MOLASSES



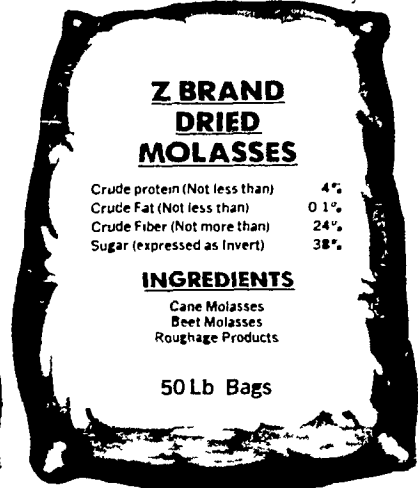
HONEY BROOK DRIED MOLASSES

Crude Protein (Not less than) 5%
Crude Fat (Not less than) 0.1%
Crude Fiber (Not more than) 8%
Sugar (expressed as Invert) 45%

INGREDIENTS

Cane Molasses
Beet Molasses
Beet Pulp

50 Lb Bags



Z BRAND DRIED MOLASSES

Crude protein (Not less than) 4%
Crude Fat (Not less than) 0.1%
Crude Fiber (Not more than) 24%
Sugar (expressed as Invert) 38%

INGREDIENTS

Cane Molasses
Beet Molasses
Roughage Products

50 Lb Bags

Honey Brook Liquid Feeding Cane Molasses



Bring your own 5 gal. bucket or drum containers or we have either one in stock for sale



WESTWAY ENERGI CUBE

it makes sense...horse sense!

THE COMPLETE, CONVENIENT, BALANCED DIET SUPPLEMENT... OFFERS MAXIMUM NUTRITION FOR HORSES AND PONIES.

ENERGI CUBES are an excellent coat conditioner for show and performance horses.



energiblock

SOLID FEED SUPPLEMENT BLOCK For Dairy And Beef

Remember - ENERGI BLOCK contains no salt and is not affected by the weather.

CALL TOLL FREE IN AREA CODES 215 & 717: 800-662-7464



ZOOK MOLASSES CO.

WEST MAIN ST., HONEY BROOK, PA 19344

ALONG RT. 322

PH: 215-273-3776

DEALER INQUIRIES INVITED

Coming...

SATURDAY, JANUARY 10 Lancaster Farming's Annual PA. FARM SHOW ISSUE

Featuring...

- ★ Special Farm Show Stories
- ★ DHIA Reports
- ★ Keystone Farmer Resumes
- ★ Complete Farm Show Schedule
- ★ And Many Extra Features

ADVERTISERS: Plan Now to be represented in this Special Issue. Deadline December 31