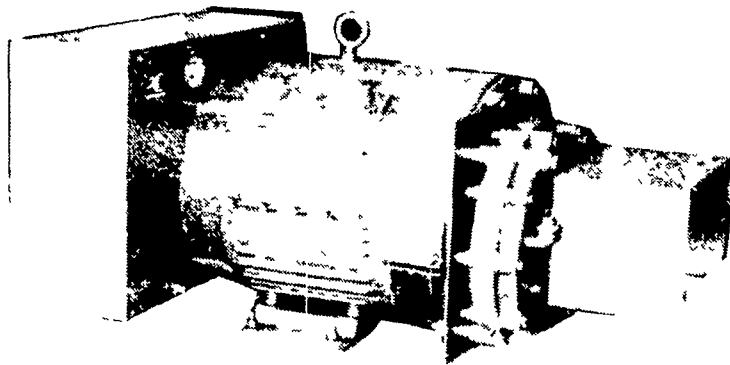
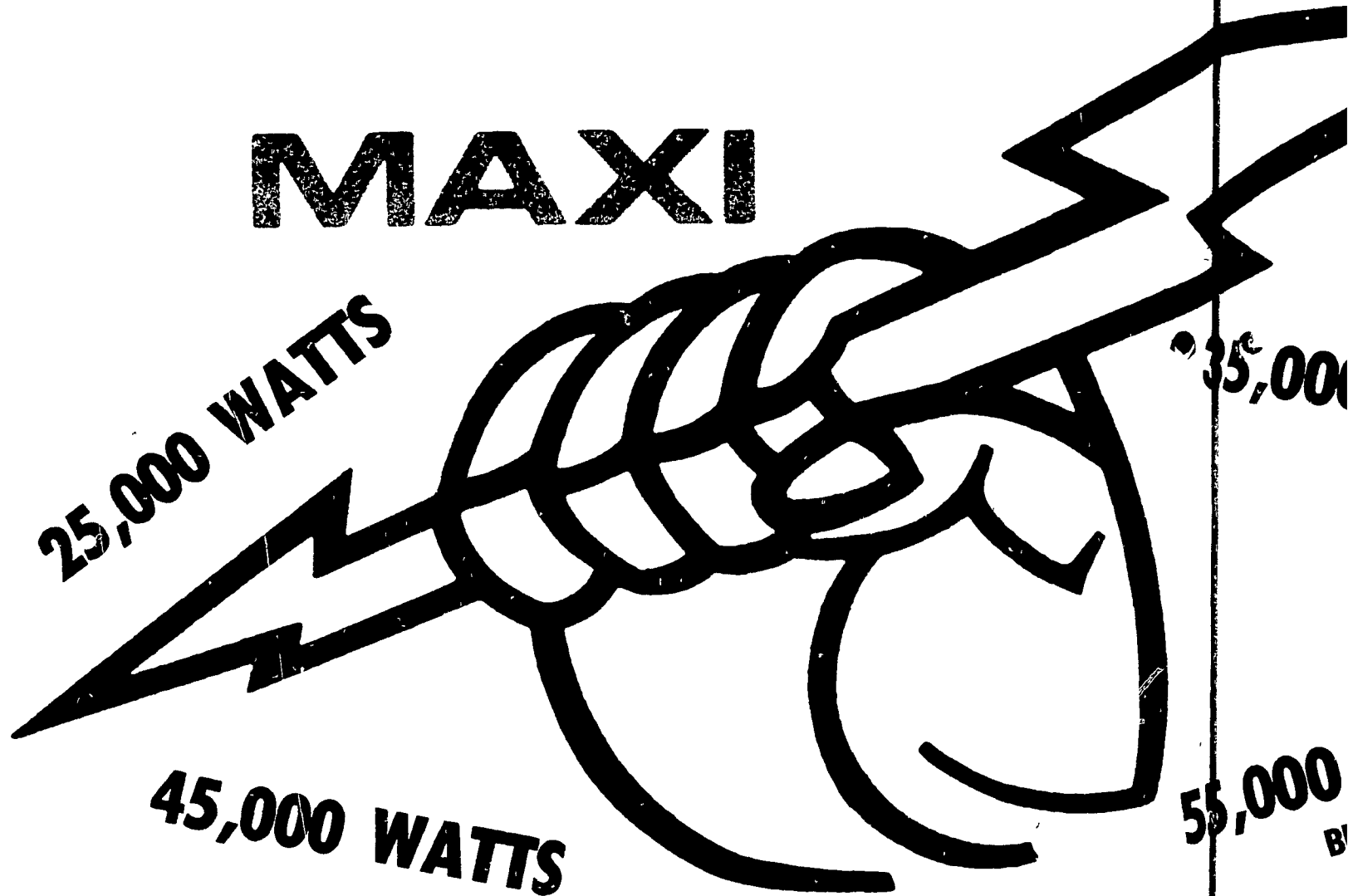


INTRODUCING

- Special design full load main output plug
- Patented long life all weather bearing system
- Accurate generator overload protection
- Every MAXI-POWER generator is fully tested and recorded before shipment
- All copper windings
- Rated to industrial continuous duty standards
- Permanent magnets in rotor for quick response for field build-up
- Precision machined helical gear drive
- Interchangeable gear box 540/1000 RPM
- Color coded volt meter easily visible from tractor
- All controls and receptacles are inside weather protected cover
- Maximum motor starting ability per KW
- Designed for continuous duty 24 hours a day industrial use
- Overload protection breaker

MAXI



POWER

PTO GENERATORS

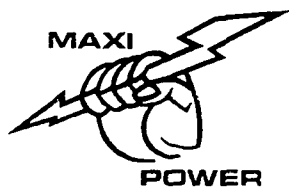
NOTE: SELECT 60 HZ

MAXI-POWER

330 FONDERWHITE ROAD
LEBANON, PA 17042

717-274-1483

★ RADIO DISPATCHED TRUCKS ★ 24 HOUR SERVICE



MODEL NUMBER	CONTINUOUS DUTY WATTS	MOTOR STARTING SURGE WATTS	ELECTRICAL SPECIFICATIONS VOLTS
	PTO F-25-3	25,000	70,000
PTO F-35-3	35,000	100,000	120/240
PTO F-35-4	35,000	100,000	120/208
PTO F-35-17	35,000	100,000	120/240
PTO F-45-3	45,000	125,000	120/240
PTO F-45-4	45,000	125,000	120/208
PTO F-45-17	45,000	125,000	120/240
PTO F-55-3	55,000	150,000	120/240
PTO F-55-4	55,000	150,000	120/208
PTO F-55-17	55,000	150,000	120/240

- I would like more information on Maxi-Power Generators
- I would like your salesman to contact me
- I would like a free analysis of my electrical needs

NAME _____
 ADDRESS _____
 CITY _____
 STATE _____ ZIP _____
 PHONE _____

Mail Coupon To:
MAXI-POWER
330 Fonderwhite Road
Lebanon, PA 17042

* 50 Hertz Consult Factory
 ** Code G capacitor starts motor under normal load and con