

# This father-son team has unique arrangement

BY SALLY BAIR  
Staff Correspondent  
MANHEIM — A suc-

cessful father and son  
dairying operation is not so  
unusual, but D. Lamar

Witmer and his father  
Harold, Manheim R3, have  
an arrangement that could

just be the first of its kind in  
Lancaster County

Lamar and his father each  
have their own herd of cows  
and share facilities. They  
share a barn, milking  
equipment and work, but  
each has his own feeding  
system, bulk tank, milk  
check and bills to pay.

It may sound unusual, but  
for the Witmers, the  
arrangement is one that  
suits their needs at this point  
and one which is working out  
well since its initiation in  
August

Lamar figures the  
arrangement may mean less  
record keeping than a  
partnership or other  
financial arrangements,  
because they each get their  
own milk check and Lamar  
buys his own feed. He pays  
his father rent per stall for  
use of the facilities

Lamar, 24, had been  
milking cows in his own herd  
independently for about  
three years. After  
graduating from Lancaster  
Mennonite High School in  
1974 he worked as herdsman  
for Shelly Shellenberger for

two years and then worked  
as a breeding technician for  
1½ years. While breeding  
cows he began his own herd  
and milked the cows at a  
neighbor's barn for two  
years. When the barn was no  
longer available he sold that  
herd, but quickly began a  
second herd

He rented another  
neighbor's barn for about  
one year but then he and his  
father decided to work  
together. Lamar says, "I  
wanted more of a permanent  
situation and a place where I  
knew I could stay a while.  
My parents invited me to  
come here and I appreciated  
it

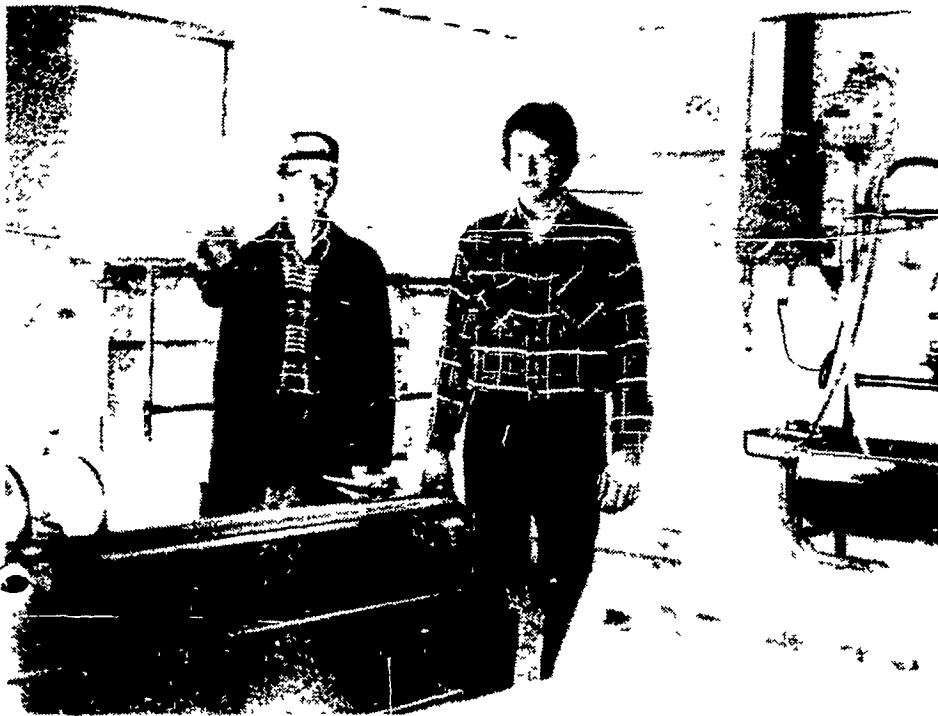
"We are both very happy.  
Neither of us wanted to go

into partnership because I  
have brothers to consider.  
This is less complicated and  
we are both operating in-  
dependently." Lamar has  
two brothers at home, Jeff,  
20, who drives a milk truck  
and Rodney, 14.

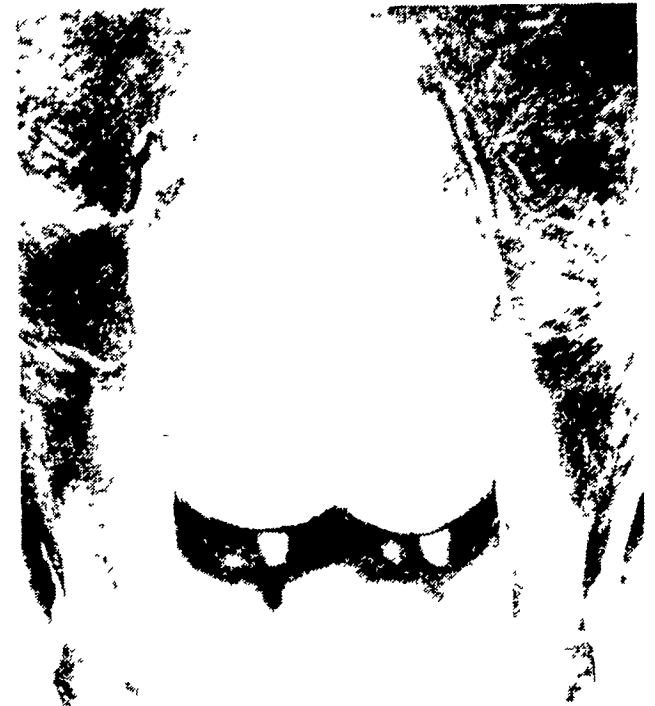
Lamar is milking 26 cows  
with the Royal Dream prefix  
and his father has 34 milking  
with the Lan-Lebco prefix.  
Lamar's herd average is  
18,025 pounds milk, 3.6  
percent and 645 fat. Harold's  
average is 15,839 pounds  
milk, 3.7 percent and 581 fat.

When it was decided to  
share facilities and work, the  
Witmers built an addition  
onto the barn to house  
Lamar's herd and they

(Turn to Page A14)



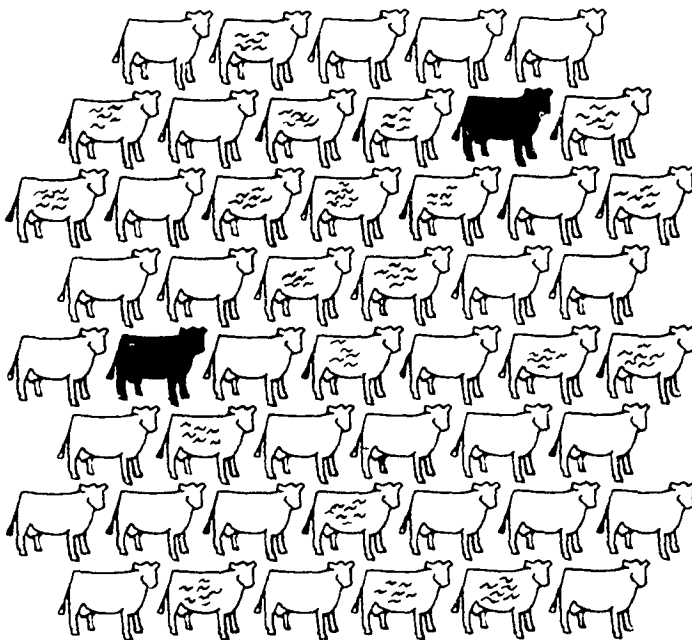
Lamar (right) and his father Harold stand beside their individual bulk tanks in an enlarged milking house. Both had their own tanks before going into business together and they chose to keep their milk separate, with the agreement of their cooperative.



Quality udders are a distinction of the Witmers' two herds. This well-attached udder belongs to one of Harold's cows, Lynette. She is an 83 point aged cow who milks 100 pounds daily and has a 19,000 pound record on two times a day milking.

## AGWAY

**ARE YOU  
LOSING  
the Yearly  
Production  
of 2 Cows  
in every 50?**



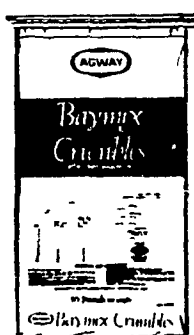
**Stop worms from stealing your milk!**  
**Deworm the whole herd at one time with  
Agway Baymix Crumbles from Agway**

- No withholding milk
- Can increase production 400 to 750 pounds per cow per year
- No restraints or handling to stress animals
- Safe to feed to milking cows, dry cows, pregnant cows and heifers over 300 lbs
- Easy to use -- just topdress once a day for six days

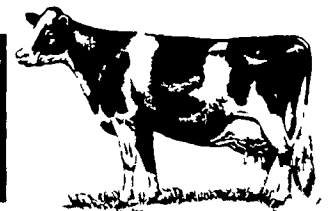
Check Agway for details, then start putting more profits in your pocket!



Available from your local Agway Store Representative or Dairy Route Truck



**pennfield**  
Dairy Mineral  
Program



While most minerals are only needed in a small level in a dairy feed, they are nevertheless very important in maintaining good milk production and optimal herd health.

Particular attention needs to be paid to the mineral nutrition of dairy cows because the forages that they consume vary widely in mineral content.

For this reason, the Pennfield Mineral Program is composed of three different formulas which are designed to complement the forage feeding programs on the farm. These minerals can be fed free choice, used in complete rations or top dressed on the bunk.

Fat Booster Pack is helpful in milk fat depression problems commonly found in the summer and also for cows on low fiber roughages.

**SAVE ON ALL OF PENNFIELD'S  
LIVESTOCK MINERALS  
OCTOBER 20 THRU DECEMBER 12  
50¢ OFF EACH 50 LB. BAG**

**pennfield feeds**  
711 Rohrerstown Road Lancaster PA 17604  
Local calls Lancaster 299 2561 • Red Lion 244-4511  
In 717 and 215 areas dial toll free 800-732-0467