



Carol Strause, left, grand champion steer exhibitor; Liane Haas, club president; and Darlene Dietrich, reserve champion steer exhibitor, were honored at the annual dinner.

Buck season to open December 1

COUDERSPORT — Pennsylvania deer hunters, accustomed in recent years to white-tail harvests of over 100,000 animals, should have another good season this year in the Keystone State, according to reports filed by field officers of the Game Commission.

The regular two-week antlered deer season will open one half hour before sunrise on Monday, December 1, and close at sunset on Saturday, December 13. The regular statewide antlerless deer season is scheduled for Monday and Tuesday, December 15 and 16.

Pennsylvania's total 1980 pre-hunting season deer population, numbering about three-quarters of a million animals, is slightly higher than last year's total, wildlife managers report, mainly due to a mild winter last year and increased fawn production this year.

The Game Commission is hopeful that hunters will report taking at least 60,000 bucks and another 60,000 antlerless deer this year. Food shortages could

develop in case of a severe winter in the coming months in some sections, and an underharvest of deer this fall could result in higher-than-normal winter mortality.

Last year, hunters reported tagging 58,864 bucks and 55,930 antlerless whitetails, for a total harvest of 114,794.

All deer hunters this year will be required to wear at least 100 square inches of fluorescent orange material, either on the head, or on the chest and back combined. A cap contains 100 square inches of material.

Both fluorescent orange caps and vests or coats are recommended by the Game Commission, not only for safety, but also to make it easier to keep tabs on other drivers and watchers.

A hunter may take only one deer per hunting license year, and he or she cannot kill, or attempt to kill, a second whitetail.

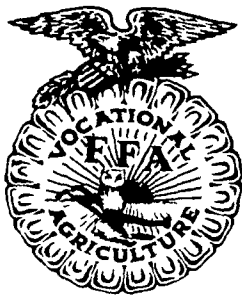
To be a legal buck, a deer must have two or more points to one antler or have one antler at least three inches long.

Not more than 25 persons

are permitted to hunt deer in a single party, and groups of five or more hunting whitetails in unison must maintain a big game hunting roster.

Hunters must tag their deer within one hour of killing and before the animal is removed from the spot where it was taken. A detachable big game tag is provided with each hunting license. The tag must be separated from the hunting license, filled out and kept tied to the deer while it is being transported, hung at camp or temporarily placed in cold storage.

A deer is not properly tagged if the entire hunting license is removed from the hunter's back and attached to the deer.



4-H beef

(Continued from Page B11)

Reading; Glenn Miller, Construction, Hamburg, Boscov's Stores, Reading; Mr. and Mrs. Pete D'Angel, Douglasville; Creutzburg, Inc., Paradise; and First National Bank of Fleetwood.

The Club officers also stressed their sincere thanks

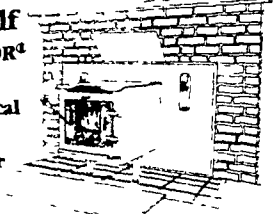
for the support of their buyers during the Baby Beef sale held earlier during the year.

Also noted were the following members taking steer to the 1981 Farm Show held Jan. 12 to 16: Exhibiting steers will be Kent Fisher, Oley; Jim and Ronald Heffner, Fleetwood; Kenianne Rarick, Reading Rd.; and Troy Werley, Shoemakersville.—LS.

Meet The Super Hearth Mate.

It's In A Class By Itself

- Continuous-cleaning VYCOR[®] glass door
- Up to 12 hours of economical heat
- Up to 55,000 BTU's per hour
- Installs easily and safely in minutes
- Fireplace and free-standing models
- Five-year limited warranty



Hearth Mate
the Fireplace Stove
© 1980

HOWARD D. WEISS, INC.
2 Locations

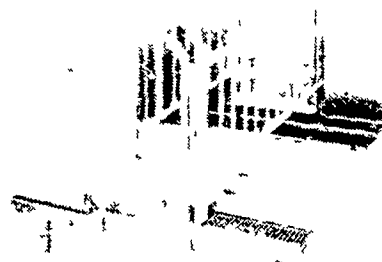
206 Cumberland St Lebanon, PA 717-274-5637	58 W. Main St Myerstown, PA 717-866-6274
Open Mon., Tues. & Fri. 6 to 9 Wed & Thurs 10 to 9 Sat 10 to 3	Open Daily 9 to 6 Sat 9 to 3
Home Phone 717-949-3755	

IDEAL[®] Livestock Equipment

P.O. Box 458 • Jefferson Iowa 50129 U.S.A.

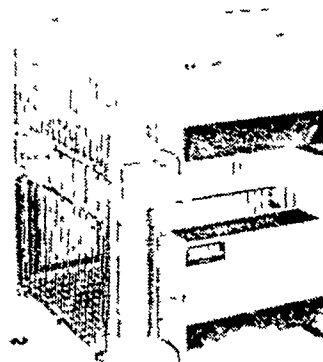


RAISED CRATE DECK



- Increase profit by reducing stress and death loss. Farrow pigs off cold floor.
- Allows economical conversion of existing facilities for crate use.
- Stainless steel or galvanized steel slats or Sani-Deck available.

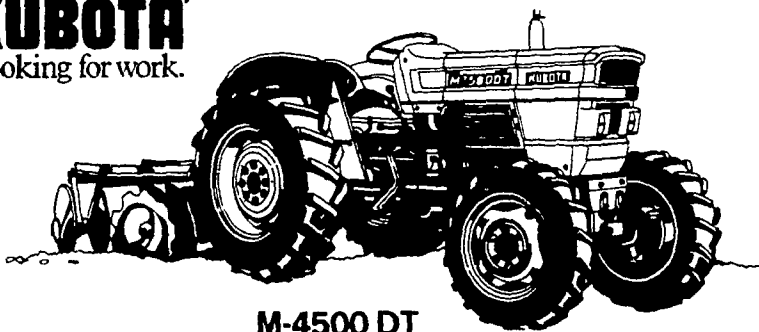
STACKED NURSERY PENS



- Expand production fast in new or existing buildings.
- Handle up to 10 pigs in 4 ft. x 4 ft. pen or up to 20 pigs in 4 ft. x 8 ft. pen.
- Large six-opening feeder will handle both pen sizes and is easily removed for cleaning. Feeder is 30½ in. long and 23 in. high with long-lasting stainless steel trough.

\$1,000.00 OFF
55 H.P. 4 W/D KUBOTA

KUBOTA
We're looking for work.



M-4500 DT

The Kubota M series tractors are designed to help you reap a profit. If you buy a 2-wheel drive M series tractor now, you get \$500 off the list price. Make it a 4-wheel drive and you'll save \$1,000.

The Kubota M Series tractors, from 55.5 to 81 horsepower, now so economical they won't plow you under.

Offer good through December 31, 1980.

KELLER BROS. TRACTOR CO.

717-949-6501 Buffalo Springs, PA 717-949-6501
Rt. 419 - 1 Mile West of Schaefferstown, Lebanon County

RYDER SUPPLY CO.

P.O. Box 219,
539 Falling Springs Rd.
Chambersburg, PA 17201
Phone: 717-263-9111

RYDER SUPPLY CO. LF 11/29

P.O. Box 219, 539 Falling Springs Rd
Chambersburg, Pa 17201

NAME _____

ADDRESS _____

PHONE _____

SEND INFO. ON _____