

Poultry Markets

Weekly New York Egg Market

From Friday, Nov. 21 to Nov. 26

	Fri.	Mon.	Tues.	Wed.
WHITE				
Jumbo	89	89	90	90
Ex Large	86	86	87	87
Large	86	86	87	87
Mediums	83	83	84	84
Pullets	69	69	69	69
BROWN				
Jumbo	1 02	1 02	1 02	1 02
Ex Large	99	99	1.02	1 02
Large	97	97	1.02	1.02
Mediums	Unquoted			
Pullets	Unquoted			
Peewees	Unquoted			
Off Grade				
Large	79	79	80	80
Checks	49	49	50	50

Tone: Large barely steady Balance medium easy.
Copyright 1980 by Urner-Barry

Nest Run Eggs

Prices are from Egg Clearinghouse, Inc., (ECI) Durham, N.H. and reflect trading prices for gradable nest run eggs (GNR) on ECI, a nationwide trading center for producers, packers and marketers. GNR eggs are classified by weight in 30-dozen cases, and traded in lots of either 300 or 750 cases. Prices are FOB buyers dock, and are computed Tuesday and Thursday of each week. This week's prices for each classification were:

Classification	Net Weight Per Case	Nov. 25 Tuesday
Class 1 - Large	48 lbs.	73
Class 2 - Large	45 lbs.	68
Class 3 - Medium	42 lbs.	66
Class 4 - Small	39 lbs.	57
Breaking Stock	48 lbs.	57
Checks	48 lbs.	52



Copyright 1980 by Lancaster Farming
P.O. Box 366 - Lititz, PA 17543
Office: 22 E. Main St., Lititz, PA 17543
Record-Express Office Building
Phone: Lancaster 717-394-3047
or Lititz 717-626-1164

Robert G. Campbell, Publisher
E. Curtis Harler, Editor
Sheila M. Miller, Associate Editor
Dick Anglestein, Staff Writer
Debra L. Koontz, Staff Writer

CORRESPONDENTS

Mary Myers, Adams County
New Oxford 717-624-8005
Laurel Shaeffer, Berks County
Bernville 215-488-7475
Jane Bresee, Bradford County
Ulster 717-358-3346
Ruth Ann Benedict, Franklin County
Waynesboro 717-762-4398
Sally B. Bair, Lancaster County
Columbia 717-285-4926
Susan Kauffman, Lancaster County
Peach Bottom 717-548-3131
Vivian Paul, Northampton County
Bath 215-837-1363
Joyce Bupp, York County
Seven Valleys

Subscription Price:
\$7.50 per year; \$13.00 - 2 years
\$12.00 per year outside of
PA, NJ, MD, DE, NY, VA & WV

Established November 4, 1955
Published every Saturday
by Lancaster Farming, Lititz, PA
Second Class Postage paid at Lititz, PA 17543
USPS 304-040

For address change form or new subscription
see Classified Section.

Members of Newspaper Farm Editors Assn., Pa. Newspaper
Publishers Association, and National Newspaper Association.

N. E. Weekly Shell Egg Report

Tuesday Nov. 25
Report supplied by USDA

Prices paid per dozen Grade "A" Brown eggs in cartons delivered to retail stores:

	Ex. Large	Large	Medium	Small
MASS +	99-1.06	97-1.03	95-1.01	69-75
Mostly	1 01-1 04	99-1.01	97-99	71-73
N HAMP	94-1.01	92-99	80-97	64-71
Mostly	96-99	94-97	92-95	66-69
R I	1.03-1 04	1.01-1.02	99-1.00	73-74
VERMONT	1 01-1.05	1.01-1.03	97-1.00	-
Mostly	1 02-1.05	1 01-1.03	99-1.00	-
MAINE	1 01-1 02	99-1 00	97-99	71-72

+ Includes Central and Western Sections only

Philadelphia Eggs

Wednesday, November 26
Report supplied by USDA
Prices to retailers sales to volume buyers, consumer grades white eggs in cartons, delivered; store door
A Extra Large 83-89; A Large 82-87; A Medium 78-83.

Baltimore Eggs

Wednesday, November 26
Report supplied by USDA
Cartoned eggs. prices to retailers, state graded (min. one case sale) white.
Grade A Large 89-81
Grade A Medium 86-88

Delmarva Poultry

Wednesday, November 26
Current broiler/fryer negotiated prices for immediate delivery includes mostly multiple-drop shipments to New York City from Delmarva.
RANGE: U.S. Grade A 50-53; Plant 49-52; Premium X U.S. Grade A 55.00
WTD AVG: U.S. Grade 52.34, Plant Grade 51.01; Premium X U.S. Grade A 55.00.
(X) - Includes special services, selected competitive brands, etc.

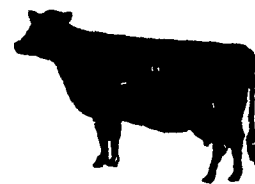
Peoria Cattle

Wednesday, November 26
Report supplied by USDA
Compared to last week Slaughter Steers closed the week .50 to mostly 1.00 higher Heifers 1.50-2.00, instances 3.00 higher Cows and Bulls 2.00-3.00 higher Trade opened the week on an active note with good buyer demand Weekly receipts consisted of fewer consignments carrying predominately YG 3-4 cattle and price discounts for these consignments less than previous weeks Receipts this week 3000, last week 3648 and 6242 a year ago
SLAUGHTER STEERS
Choice, few Prime 2-4 1050-1300 lbs 65 00-66 50, load mainly YG 2-3 1140 lbs 66 75 3 loads 1050-1100 lbs 67 00 YG 3-4 1050-1300 lbs 63 50-65 50 Mixed Good and choice 2-3 1000-1300 lbs 62 50-65 50 bulk 62 50-63 50 Wednesday Good 60 00-63 00
SLAUGHTER HEIFERS
Choice and Prime 2-4 950-1000 lbs 64 50-65 25 Choice 2-4 900-1100 lbs 63 50-65 00 YG 3-4 950-1050 lbs 61 00-63 50 Mixed Good and Choice 2-3 850-1000 lbs 61 50-63 50 Good 60.00-62 00
COWS Utility and Commercial 2-3 41 00-47 00 Cutter 40 00-44 50 Canner and Low Cutter 37 00-41 00
BULLS YG 1-2 1100-2000 lbs 45 00-52 00, bulk 48 00-52 00 Few 1550-1800 lbs YG 1 53 00-56 00 during week

Dairy-livestock day slated for March

UNIVERSITY PARK — A combined Dairy and Livestock Day will be held at Penn State on March 2, 1981, at the J. Orvis Keller Conference Center, University Park
Invited speakers will deal with financing, credit and outlook for dairy and livestock producers, energy alternatives, and new developments in animal management

several research reports will be given by Penn State faculty members.
The program will begin at 9:30 a.m.



Heinsey's Poultry Market

Root's, East Petersburg
Tuesday, November 25
Report supplied by auction
DUCKS, DRAKES. range .60-.68.
DUCKS, HENS range 50-.56.
HEAVIER HENS. 7-9 lbs. range .28-.36
RED FOWL 4-5 lbs range 12-.20.
RED FOWL 5-6 lbs. range .28-.34.
CROSSBREED ROOSTERS: 8-10 lbs. range .30-.46
GUINEAS range 1.30-1.40.
GEESE. range 40-.56.
TURKEYS. range .50-.62.
PIGEONS range 50-.75 ea
WHITE PIGEONS: range 2 00-2 50 ea
RABBITS 4-6 lbs range 50-.68
RABBITS 7-10 lbs range 34-.46.
TOTAL COOPS: 500



TOP OF THE HOG MARKET

DANVILLE LIVESTOCK MARKET
OLD ROUTE 11, DANVILLE, PA 17821
717-275-2880

HORSE SALE HELD 3rd SATURDAY OF THE MONTH

Market your cattle & hogs the auction way.
Sale every Monday 2 P.M.
Melvin M. Lehman (Owner)



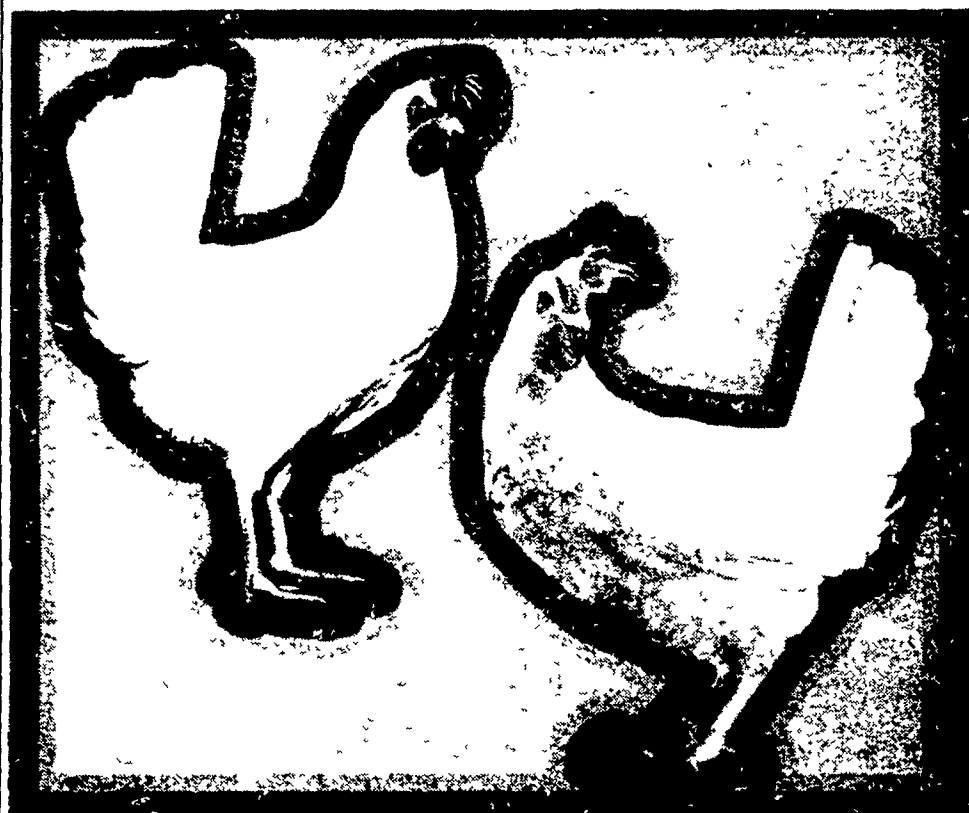
Two Ways To Improve Your Profit Picture XL & DK

Two layers with distinctly different characteristics From two separate research programs

You don't have to buy from two different companies to get the two top layers on the market

The XL shows excellent production under many management conditions The DK responds best to finely tuned, close management

DEKALB Layers are bred to possess the economic traits most applicable to your operation You do have a choice The high productivity XL or the high efficiency DK



CONTACT:

Moyer's CHICKS, INC.

DEKALB
BROWN & WHITE
EGG LAYERS

Quakertown, PA 18951
(215) 536-3155

HUBBARD
WHITE MT
BROILERS