

Through a vacuum process, water is pulled out of the sludge, leaving behind a dry cake that is hauled to the farms and spread. Looking on is Middletown's superintendent, Paul McCurdy, foreground

Middletown sludge

(Continued from Page A27)

sludge is the only economical choice open to the Middletown Plant for getting rid of its sludge.

The citizens of Middletown don't want to see their rates go up, and they are happy the farmers want the stuff I see sludge as a desirable commodity in the future — I can't see destroying a valuable resource through incineration or burying it in landfills.

He smiled and said, We'll be advising all townships on our sludge activities in order

to keep complaints from citizens on the odors to a minimum. My feelings, though, is the sludge, at worst, doesn't smell as bad as pig or chicken manure — that's the kickiest stuff there is.

Farmers within a 10-mile radius of the plant, who are interested in joining Christian Becker, Merle Gruber, Art Lutz, Clair Nissly, Frank Ziats, and the Pa. Holstein Association in the sludge program, should contact Paul McCurdy at the Middletown Borough

Sewage Treatment Plant, 60 West Ermaus Street, Middletown, PA 17057, or call 944-4686, ext 55 for more information —SM



Fulton Grange honors Granger of Year

OAKRYN — Fulton Grange No 66 met in regular session Monday at their hall in Oakryn with the Master, Thomas C Galbreath, presiding at the business session.

It was announced that Mrs Howard W Miller Jr was selected as Fulton Grange's Granger Of The Year.

The youth committee sponsored a game night at the home of Mr and Mrs Edward L Zug, Peach Bottom R D, last Saturday.

Mrs Jesse Wood announced that the Little Britain Cub Scouts have invited the Oakryn Senior Citizens and other senior citizens of the Little Britain and Fulton township areas to a meeting Dec 19th. She also announced that the Oakryn Senior Citizens will hold an Acme dinner at noon Dec 10th at Fulton Grange Hall.

In other business, Thomas C Galbreath was selected to represent Fulton Grange on the Lay Advisory Committee for long range planning for the Solanco School system, and the Grange gave a ten dollar donation to the Arthritis Foundation.

Scott Stauffer reported on his trip to Kansas City to the FFA convention. The Solanco FFA students spent three days at the convention and did sight-seeing going and returning which included the St. Louis Research Farm.

The Oakryn Senior Citizens held a Christmas bazaar at the Grange Hall Monday and attended the Grange meeting. The Lecturer, Mrs Jesse Wood, welcomed them and introduced Mrs James Wood, who presented the program. It opened with group singing "Love's Old Sweet Song". Mrs Verna Graybeal read a poem "Man Cannot Live By Bread Alone". Mrs Verna Shirk gave a reading.

Mrs Charles Wood conducted an audience participation fun game, "Mr and Mrs Game" with the following participating, and the winners respectively 1-Mr and Mrs Thomas Galbreath, 2-Mr and Mrs Clifford Holloway Jr, 3-Mr and Mrs Richard Letever, and 4-Mr and Mrs J Everett Kreider.

The next meeting will be held December 8 with Mrs Jesse Wood in charge of the program.

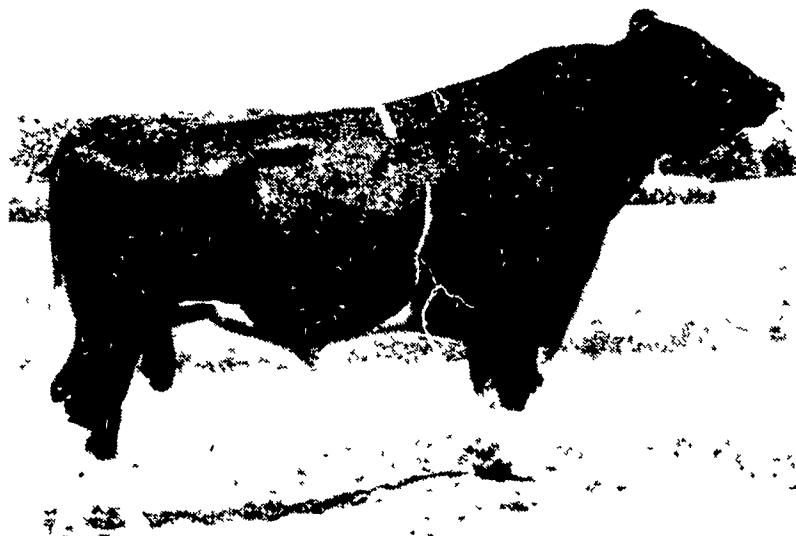
The Grange will go Christmas carolling December 22nd, followed by a party at the Grange Hall.

PENNSYLVANIA AGRICULTURE



WE'RE GROWING BETTER

TEST is IMPORTANT



29H3183 Strickler
KEN ROYAL EX-90

USDA 7/80 Rpt
22D 17H 17,950M 3.6% 653BF
PD +\$132 +1,079M +.02%
+43BF

HFA Type expected in January
1981

Genetic Trait Summary-Sires improved udders, correct rumps, correct leg set, above average calving ease (11%)

Sire: Hartsbrook I. - -hoe Ken
EX-93 GM

Dam: Strickler Bootmaker
Rebecca VG-85

4-04 2x 326d. 23,480m 3.8% 888f.
Mat. Gr. Dam 3-06 2x 360d.
24,840m 4.0% 1003f

MORE ABS TEST IMPROVERS

29H3630 Apple	+\$104	+ 461M	+.24%	+52BF	41% Rpt	+1 02 PDT	+330 TPI	26% Rpt
29H2775 Triple Threat	+\$ 47	+ 158M	+ .14%	+26BF	96% Rpt	+2 43 PDT	+294 TPI	94% Rpt
29H2417 Art	+\$145	+1004M	+.13%	+56BF	99% Rpt	15 PDT	+330 TPI	95% Rpt
29H3093 Grand Slam	+\$114	+ 772M	+.11%	+45BF	69% Rpt	+1 17 PDT	+351 TPI	55% Rpt
29H3158 Twilight	+\$169	+1289M	+ .09%	+60BF	56% Rpt	N/A		
29H3139 Ijon	+\$189	+1443M	+.07%	+64BF	52% Rpt	+ 44 PDT	+457 TPI	60% Rpt
29H2770 Gemini	+\$ 95	+ 689M	+.07%	+35BF	88% Rpt	+1 11 PDT	+303 TPI	82% Rpt
29H2501 Imp Knight	+\$141	+1092M	+.06%	+49BF	98% Rpt	+ 06 PDT	+330 TPI	87% Rpt
29H3032 Cypress	+\$144	+1122M	+.06%	+50BF	68% Rpt	+ 95 PDT	+402 TPI	66% Rpt
29H2932 Line Chief	+\$166	+1310M	+.06%	+57BF	57% Rpt	+1 63 PDT	+501 TPI	49% Rpt
29H3085 Elmer	+\$223	+1799M	+.05%	+74BF	59% Rpt	+ 90 PDT	+574 TPI	55% Rpt
29H2588 Top Command	+\$ 87	+ 657M	+.05%	+31BF	76% Rpt	24 PDT	+187 TPI	60% Rpt
29H2890 Ivy	+\$ 73	+ 559M	+.04%	+26BF	97% Rpt	+1 87 PDT	+306 TPI	96% Rpt
29H3645 Sooner	+\$165	+1347M	+.03%	+54BF	32% Rpt	+2 02 PDT	+522 TPI	41% Rpt
29H2960 Sexation	+\$164	+1343M	+.03%	+54BF	65% Rpt	+2 38 PDT	+546 TPI	66% Rpt
29H3081 Henry	+\$129	+1038M	+ .03%	+43BF	58% Rpt	N/A		
29H2655 Bouquet	+\$136	+1131M	+ .02%	+44BF	71% Rpt	62 PDT	+270 TPI	57% Rpt
29H2694 BUD	+\$135	+1114M	+.02%	+44BF	65% Rpt	+ 99 PDT	+380 TPI	55% Rpt
29H3183 Ken Royal	+\$132	+1079M	+ .02%	+43BF	49% Rpt	N/A		
29H3740 Royal	+\$127	+1055M	+ .04%	+41BF	57% Rpt	+1 42 PDT	+395 TPI	49% Rpt
29H3017 Belle	+\$124	+1027M	+ .02%	+40BF	70% Rpt	+1 29 PDT	+378 TPI	68% Rpt

Top 21 test sires average

+\$134 +1023M +.06% +47BF 68% Rpt +1 04 PDT +381 TPI 65% Rpt



- * 16 of the 23 test sires at ABS are plus 1000 or more pounds PD milk
- * 3 are plus 2.00 type or more, 10 are plus 1.00 type or more, and 16 are plus .01 type or more

Remember PD % TEST is the real proof a bull will sire improved butterfat percent. A high daughter average does not always mean a bull will improve butterfat test.



Bangor, PA
Baptistown, NJ
Columbia, PA
Ephrata, PA
Holtwood, PA
Lebanon, PA
Leola, PA
Port Murray, NJ
Prospectville, PA
Reading, PA
Stewartstown, PA
Thomasville, PA
West Grove, PA
Elmer, NJ

Eric Heinsohn 215-588 4704
Cindy Gordeuk 201-996-2088
James Charles 717-898-8694
Darvin Yoder 717-733 0966
Paul Herr 717 284 4592
Paul Martin 717-949 2381
Lynn Gardner 717-656 6509
Robert Kayhart 201-689 2605
William Tyner 215 542 8479
Robert Greider 215 378 1212
Tom Engle 717 993 6836
Ira Boyer 717 225 3758
Maurice Stump 215 869 9187
Cyndy Hetzell 609-455-8187

Taneytown, MD
Mt Airy, MD
Allenwood, PA
Carlisle, PA
Coburn, PA
Linden, PA
Mansfield, PA
McClure, PA
Millville, PA
Mifflinburg, PA
Mifflintown, PA
Reedsville, PA
Ulysses, PA

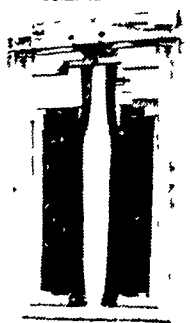
Jack L Kling 301-447-2742
Allan Prickett 301-663-4191
George Showers 717-538-1812
Wayne Piper 717 249-8882
Wendel Musser 814-349-5310
Larry Bower 717-323-9710
Harold Robson, Jr 717-662-7731
Michael C Ewing 717-658-7316
Wilmer Hendricks 717-458-5949
John M Beachy 717-966-1344
Mervin Zandt 717-436-6386
Glenn Barr 717-667-2775
Bonnie Barker 814-848-7674

301-447-2742
301-663-4191
717-538-1812
717 249-8882
814-349-5310
717-323-9710
717-662-7731
717-658-7316
717-458-5949
717-966-1344
717-436-6386
717-667-2775
814-848-7674

TOX-O-WIK®

Automatic

HEAD GATE



INSECTICIDE APPLICATORS

- Kill Lice on Cattle
- Gain Better
- More Profits

- Complete Sales and Service
- Parts In Stock

ELMER MARTIN
RD2, MYERSTOWN, PA
717-949-2081

EDWIN HOOVER
LANC CO
RD 1 EPHRATA PA
717 733-8313