

Fought shows Cumberland's grand champ steer

CARLISLE — Karen Fought of North Middlesex Road, Carlisle, exhibited the grand champion steer during the Cumberland County 4-H Roundup, held last week at the Carlisle Livestock Market

Before being tagged grand champion, the steer was selected as the top middleweight entry by Judge Robert Herr, Narvon

The reserve champion steer was shown by Chris Hopple of R2 Mechanicsburg. Both of these 4-H

steers will be competing at the Farm Show in January

Showmanship awards were presented to the following 4-H'ers: Kim Hopple, R2 Mechanicsburg; Junior Champion Allyson Sheaffer, Carlisle, Intermediate Champion; and Roxann Leib, R2 Mechanicsburg, Senior Champion, in the beef show. Showmanship awards in the market lamb classes went to Susan Roeder, R7 Carlisle, Junior Champion; and Angie Fought, R6 Carlisle, Senior Champion

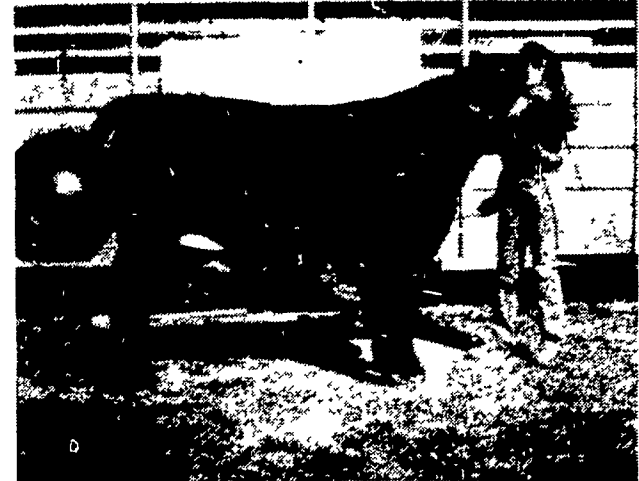
The following are the class results

- STEERS**
Lightweights
 1 John Wardle 2 Bill Kimme 3 Bill Wardle 4 Mark Wardle 5 Jeff Wardle
Medium Lightweights
 1 Randy Yost 2 Andy Rill 3 Ben Kutz 4 Keith Baker 5 Roxann Leib
Mediumweights
 1 Karen Fought 2 Steve Otto 3 Denise Baker 4 David Shultz 5 Ron Kimmel
Medium Heavyweights
 1 Nancy Yorlets 2 Angie Fought 3 Sandy Hopple 4 Allyson Sheaffer 5 Cheryl Fought
Heavyweights
 1 Chris Hopple 2 Karen Nailor 3 Kim Hopple 4 Gloria Moose 5 Mark Yoder

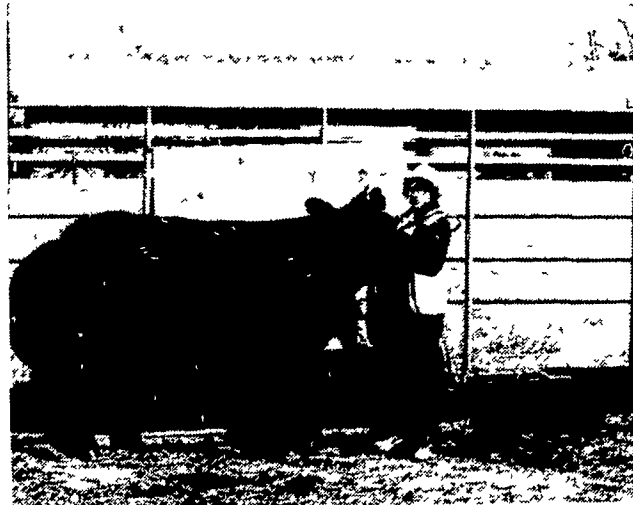
- SHOWMANSHIP**
Junior
 1 Kim Hopple 2 Ben Kutz 3 Jeff Wardle 4 Keith Baker 5 Bill Wardle
Intermediate
 1 Allyson Sheaffer 2 Angie Fought 3 Gloria Moose 4 Karen Nailor 5 Bill Kimmel
Senior
 1 Roxann Leib 2 Cheryl Fought 3 Randy Yost 4 Nancy Yorlets 5 Mark Yoder
LAMBS
Lightweights
 1 Beth Roeder 2 Paul Wynn 3 Dwayne Haus 4 Kathy Roeder 5 David Shultz
Heavyweights
 1 Tim Brandt 2 Vickie Holstry 3 Angie Fought 4 Carol Perry 5 Joe Wynn

- Pairs**
 1 Carol Perry 2 Paul Wynn 3 Sharon Hock 4 Joe Wynn 5 Mark Lebo
SHOWMANSHIP
Junior
 1 Susan Roeder 2 Carolyn Myers 3 Carol Perry 4 Tim Brandt 5 Melissa Walker
Senior
 1 Angie Fought 2 Paul Wynn 3 Dwayne Haus 4 Vickie Holstry 5 Bett P. eder

- FARM SHOW ENTRIES**
Steers
 Kim Hopple Bill Kimmel John Wardle Roxann Leib Robert Line Denise Baker Ron Kimmel Gloria Moose Kare Fought Cheryl Fought Angie Fought Sandy Hopple Nancy Yorlets and Chr Hopple
Market Lambs
 Angie Fought David Shultz Vick Holstry Dwayne Haus and Susan Roeder



Karen Fought of North Middlesex Road, Carlisle received the County Champion Award at the 1980 Cumberland County 4-H Beef and Lamb Roundup.



Chris Hopple, Mechanicsburg, exhibited the Reserve County Champion Beef.

Cecil County lists top 10

October-November 1980

ELKTON, Md — Following are the top ten dairy herds for Cecil County which are on test with the Cecil County Dairy Herd Improvement Association

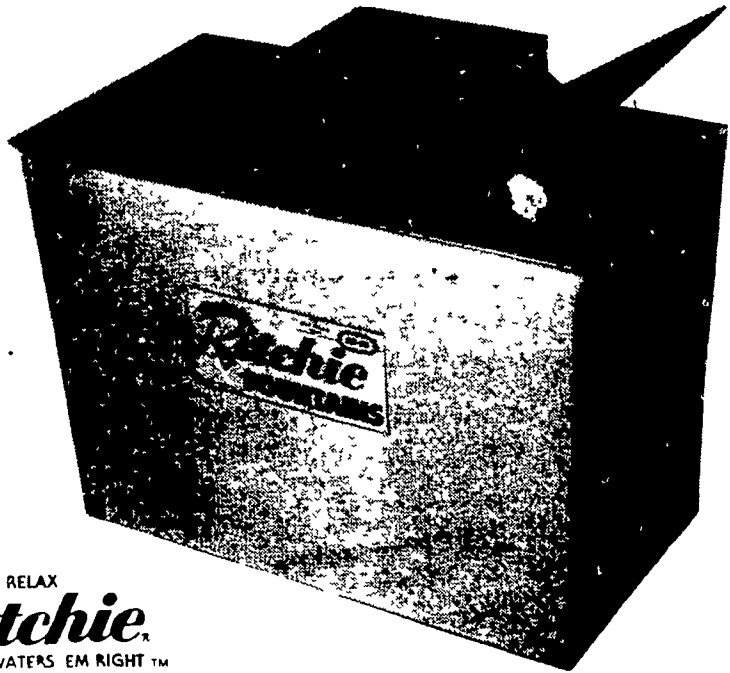
This information is compiled from records received in the Cecil County Extension Office during the period from October 16 through Nov. 15, 1980

Cherry Valley Farm	2 28	3 80	60 0
Carroll Davis	1 99	4 28	46 5
Zee M Farm	1 77	3 95	44 9
R D Dempsey & Son	1 76	3 95	44 5
Albeck, Inc	1 63	3 88	42 0
Lovdal Farm	1 60	4 28	37 3
Fred Schrader	1 60	3 79	42 3
Charles Moore	1 57	3 79	39 5
Blair & Cammy Yurkanin	1 56	4 38	35 7
Mt Ararat Farm	1 53	4 87	31 4

PENNSYLVANIA AGRICULTURE



WE'RE GROWING BETTER



RELAX
Ritchie
 WATERS EM RIGHT™

WATER THAT WON'T QUIT

Ritchie Fountains deliver Even in the dead of winter they are out there working You re not

Weatherproof You bet they are Heating systems and efficient insulation keep water ice free just set the Watt Watcher™ thermostat for minimal energy use Big-throated non-stick plastic valves keep water gushing in Each of your cows get all the water they need to promote peak production

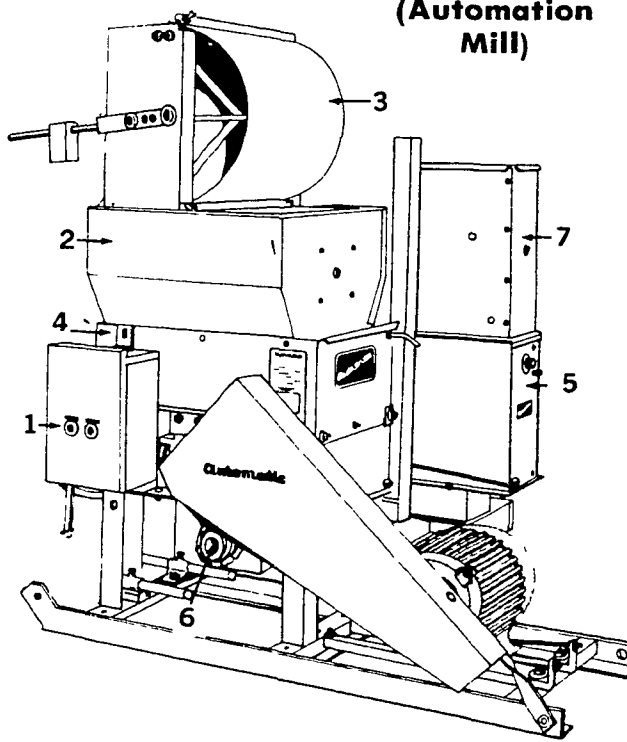
Ritchie Fountains are tough too Quality-built with rugged heavy galvanized steel and CD 50 epoxy finish to stand up to weather and barnlot abuse



Why take chances on anything less than a red and yellow Ritchie Fountain? Call your Ritchie dealer for water that won't quit

Automatic ELECTRIC FEED PROCESSOR

(Automation Mill)



Process and blend 3 or more ingredients at one time!

(1) Control center (Type III timer system) predetermines and records amount of feed grain (2) Bin Switch regulates input auger automatically controls grain level in hopper (not visible) (3) Automatic scale meters preset amount of grain through roller mill operates automatically and continuously without power (4) Automatic Roller mill with fast roll attachment rolls grain (5) Dial controlled variable speed augers in electronic meter let you add protein mineral or medication into mixing auger. (6) Mixing auger mixes and delivers processed feed to take away auger Supply auger and mill processed preset amount of grain. (7) Accessory hopper with flow switch

Note The Automatic Dump Scale and feed metering units may be gravity fed from overhead bins or hoppers Flow control switches are required if input augers are used in place of gravity flow

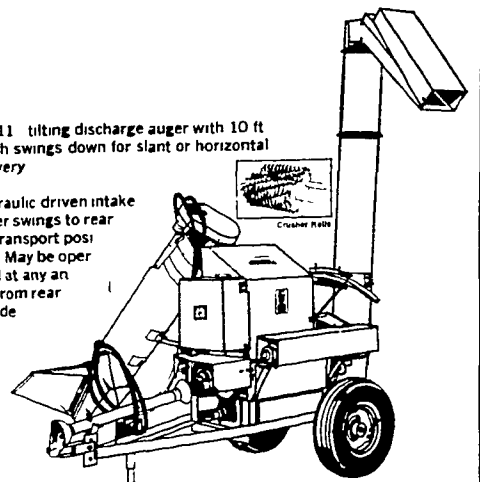
EAR CORN UNIT

Automatic's ear corn unit handles wet, shucky and even frozen ear corn The crusher unit shreds the cob followed by rollers that crack the corn, producing a flaky, dust-free feed for greater digestibility The hydraulically driven intake auger swings to the rear for transport and may be operated at any angle from rear to side

Dust-free rolled grain is more palatable, easier to digest, eliminates wheezing and many digestive disorders

Fig 11 tilting discharge auger with 10 ft reach swings down for slant or horizontal delivery

Hydraulic driven intake auger swings to rear for transport position May be operated at any angle from rear to side



RYDER SUPPLY
 CO.

539 FALLING SPRING ROAD, P.O. BOX 219
 CHAMBERSBURG, PENNSYLVANIA 17201
 PHONE 717-263-9111