

Public Sales Register

Closing Date - Monday, 5:00 P.M.
of each week's publication

FRI NOV 28 - 7:00 P.M. Mar Lee Farm Herdsman's Choice Club Calf Sale Held at the Fairgrounds in Frederick, MD

FRI NOV 28 11:00 A.M. Public Sale of Trucks, Tractors, Steiger, Combine, Implements, Car West Road, Salisbury, MD Bill and Barbara Twilley Owners Pete Richardson Auction Sales

FRI NOV 28 10:00 A.M. Public Sale of Vehicles, Office Furniture and Equipment, Machinery and Equipment Located in Blue Ball, PA, rear of the Ice House Restaurant at Traffic Light at Rt 23 and 322 James R Leonard Jr Trustee Claud F Smith and V Ronald Smith Auctioneers

FRI NOV 28 - 10:30 A.M. Public Sale of Farm Machinery, Bill Howard Farm, Rt 982, Kecksburg, PA L.H. Kuznik & J.L. Henry Auctioneers

SAT NOV 29 11 A.M. Con signment Horse Sale at the Keister's Middleburg Auction Sales, Inc, Rt 522, 3 miles East of Middleburg, 5 miles West of Selinsgrove, Pa Don & Walt Keister, Owners Ray Long & Dave Imes Auctioneers

SAT NOV 29 NY Hereford Assoc 15th Annual Reg Heifer and Club Steer Sale Held at the Livestock Pavilion, Cornell Univ, Ithaca, NY Auctioneer Jack Lowderman

SAT NOV 29 - Public Sale of Farm Equipment, Etc Located along the road leading from Milbach to Richland Lebanon Co Sale for Irwin Horst G Harvey Weik Auctioneer

SAT NOV 29 - 12:30 P.M. Public Sale of Valuable Real Estate and Household Goods

and Quilts Located in Blue Ball along Rt 322 fourth house west of Blue Ball Fire Hall, Fourth house East of Blue Ball Machine Co Katie F Stoltzius Owner Robert E Martin and Son and Frank L Steller Auctioneers

SAT NOV 29 12:30 P.M. Public Sale of Valuable Dairy Farm, located along New Danville Pike, 2 miles south of New Danville, 1 mile north of Conestoga Center, 5 miles southwest of Lancaster, 3 miles west of Willow Street Terms by Jacob S Glick, J Everett Kreider and Steve Petersheim Auctioneers

SAT NOV 29 12:00 P.M. Public Sale of Real Estate, Household Goods, Tractor, Buicks, Farm Machinery and Coins Located along Osceola Dr, Rd 1, Drumore, Lancaster Co, PA (Taker 272 about 2 miles south of the Buck, turn right on to Osceola Dr, go about 1 mile to sale Sale by Elmer E Probst Estate Howard Shaub, Roy Probst Auctioneers and Eric Probst App Auctioneer

SAT NOV 29 2:00 P.M. Absolute Public Sale of 95.2 acre farm with all improvements Located in W Hamp Twp, Lancaster Co, PA Sale for John Ebersole, J.H. Davis Auctioneer

SAT NOV 29 - 10:00 A.M. Selling IH Farm Equipment Business Parker's Auction Held on Rt 307 East of Hurlock, MD Walton P Taylor Auctioneer

SAT NOV 29 9:30 A.M. Public Sale of Farm Real Estate and Personal Property Located in Perry Co, 6 miles north of Loysville, follow Rt 74

north from Kennedys corner to Earley, at Earley turn east and go 1 1/4 mile to farm Stanley G Weaver Owner Dean Shull Auctioneer

SAT NOV 29 11:30 A.M. Public Sale of Farm Equipment Located along the road leading from Milbach to Richland Lebanon Co, PA Irwin Horst Owner G Harvey Weik Auctioneer

SAT NOV 29 - 10:00 A.M. Public Sale of Construction Equipment Located at the Office of Salisbury Fill Dirt and Top Soil, north Salisbury Blvd, Salisbury, MD (US 13 north of Salisbury behind scale house) Pete Richardson Auctioneer and Sales Manager

SAT NOV 29 9:00 A.M. Public Sale of Sawmill, Truck, Farm Equipment etc of the Late Paul Chermock Located Felton Rd 3 PA Red Lion, south on Rt 24, first left turn south of Winterstown and proceed thru crossroads, 2 1/2 miles to sale Philip L Erb Auctioneer and W.L. Kohr Sr Auctioneer

SAT NOV 29 - Horse and Tack Auction held at Thomasville Livestock Market, Along Rt 30 west of York, PA David Martin Auctioneer

SAT NOV 29 - Awful Augie's Club Calf Sale Held at the fairgrounds in Frederick, MD Bruce Ridgely Auctioneer

DECEMBER

WED DEC 3 6:00 P.M. Public Sale of Coins Located at the Lykens Valley "Shop and Play" Hall, Rt 209, Lykens, Pa John Maurer Owner Dockey & Dockey Auctioneers

FRI DEC 5 12:00 Noon Monthly Cow Sale at Melvin Kolb, Inc Lancaster Farm, 2220 Dairy Road, Lancaster, Pa Dennis Kolb, Manager

FRI DEC 5 through Dec 13 - Museum Dispersal Sale Smokey Glen Farm, Gaithersburg, MD 301-933 0250



Chicken:

Good for you and good for your budget



SPECIAL HOLSTEIN DAIRY SALE

FRIDAY, NOV. 28
12:30 P.M.



To be held at Smoketown Quality Dairy Sales Co., Smoketown, Pa. Rt. 340 5 mi. E. of Lancaster 5 mi. W. of Intercourse.

Two load of Reg. & Grade cows & heifers out of New England States & Canada. Sires Include:

- Reg. Brezzy-Home Capsule Virgil.
- Reg. Ingholm Yukon - Bred to Brysdale Ultimate Len.
- Reg. Maylenne Image Maker - Bred to Walhodon Betty Pompous.
- Reg. Piney-Mar Alpine - Bred to Benhill M G Harmony.
- 2-Reg. Ingholm Yukon - Bred to Saflam Astronaut - outstanding 1st calf heifers.
- 2-Reg. A Jumal Ivanhoe Duke - Bred to Medway Mandrake - out of Rockman.
- Reg. Raeburn Chieftain Mac - Bred to Bracepintully Reckless.
- Reg. Briarwood Chieftain - Bred to Brysdale Ultimate Len.
- Reg. Born - 1-31-78 - Hill Haven Standout Job - Dam G.P. 83 Milk & Honey Pencor - 2 yr. 2m. 305d. 11,810m 4.2T, 3 yr. 5m. 269D. 12,670m 4.0T. Granddam 3 yrs. to 8 yrs. 15,800m. to 17,780m. 3.6T to 3.9T and 572F to 685F.

Could be some Reg. heifer calves
One load of cows selling due to Dairymen's illness.
Cows milked at regular time
Cash or good check day of sale

Sale by
GORDON W. FRITZ
717-393-0930

Carl Diller & Paul Snader, Auctioneers
Henry Kettering - Pedigrees

Lunch by Bird-in-Hand.

CLOSING OUT SALE

After over twenty years in business, the undersigned will sell the following located on his farm located 7 miles south of Hagerstown, Washington County, Maryland off Interstate 70 onto State Route 65 (Sharpsburg Pike) to State Route 63, one half mile to sale.

— WATCH FOR SALE SIGNS —
FRIDAY, NOVEMBER 28, 1980

beginning at
9:00 A.M. Sharp

— TRACTORS and FARM MACHINERY —

4500 Ford Diesel Tractor with loader including bucket and boom, Oliver 88 Tractor with 74H Two Row Picker, Ford 800 tractor; John Deere 10-20, 300 Case Tractor, Farmall H Tractor with wide front, 127 International Tractor with mower and blade (like new), 2, 3 and 5 Bottom Plows, 1, 2 and 4 Row Cultivators, Chisel Plows, Disk Harrows, Sprung Tooth Harrows, Two Row Corn Planters, Grain Drills, Four Balers including Gehl Round Baler in like new condition, New Holland 467 Haybine, New Idea PTO Corn Sheller, Four Hay Rakes, Hay Crumbers, Elevators, Conveyors, Mowers, Wagons including hay, dump and silage, Harvester's Blowers, Fertilizer and Lime Spreaders, Manure Spreaders, Two Front Blades for International Loaders (like new), Snow Blowers and Blades, Wood Saws, and lots of other farm machinery and related equipment too numerous to mention.

— LIVESTOCK —

Purebred Arabian Gelding, 4 years old, head consisting of 3 beef cattle due in March, 2 Black Angus, 1 Holstein heifer, 1 Charolais heifer, 2 steer calves, 1 fat steer, and 5 butchering hogs approx. 500 pounds each.

— TOOLS, PARTS and MISCELLANEOUS —

Lincoln 225 Amp. Welder, 1 Horsepower Air Compressor, Bench Grinder, Anvils, Vises, All types of power tools including Drills & Saws, Battery Charger, Railroad Jacks, Hydraulic Jacks, New Tires and Rims, Cylinders, Pulleys, Three point hitches for Tractors, Draw Bars, Top Links, Front ends for JD 30/20 and others, LOTS OF GARDEN and LAWN EQUIPMENT including Gravely Mower, Mower Knives, PTO Shafts, hand tools of all types, Hardware of all kinds, Chains, Chain binders, 8 and 10 inch I-Beams, Harrow Teeth and Disk, Tractor Chains, Office Desk, Files and other office equipment, and hundreds of other equipment parts and miscellaneous too numerous to mention.

— FOUR TRUCKS —

1978 INTERNATIONAL LOADSTAR 1800, 446 engine, 5 speed, 2 speed axle, 31,700 miles, with Jerr Dan 26 Foot Roll Back (Deluxe model with overhead ramp.)

1975 INTERNATIONAL LOADSTAR 1850 Diesel, 5 speed, 2 speed axle, air brakes, with Jerr Dan 26 Foot Roll Back.

1978 CHEVROLET 1 TON TRUCK, 4 speed Jerr Dan 15 Foot Roll Back

1975 CHEVROLET SCOTTSDALE 3/4 TON TRUCK, 4 speed transmission.

Trucks to be sold at 12.00 noon followed by farm equipment.

TERMS: Cash or check with proper identification. Proper identification will be required. Not responsible for accidents.

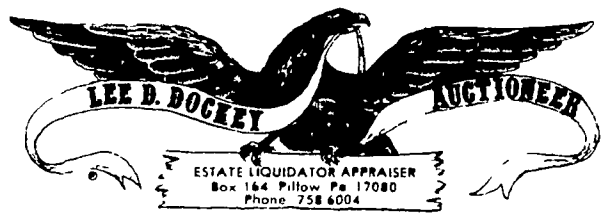
MR. & MRS. ROY V. MONNINGER
AUCTIONEERS:

JAMES G. COCHRAN
Box 222
Boonsboro, Maryland 21713
Phone 301-432-2844 - Office
301-432-5349 - Residence

ROBERT C. MULLENDORE
Boonsboro, Maryland 21713
Phone: 301-582-0546

CLERKS: F.E. Brinkley, C.L. Metz, T.E. Bikle

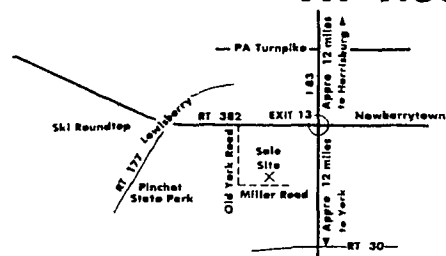
LUNCH RIGHTS RESERVED



PUBLIC SALE

SATURDAY, DECEMBER 13, 1980

AT 1:00 P.M.

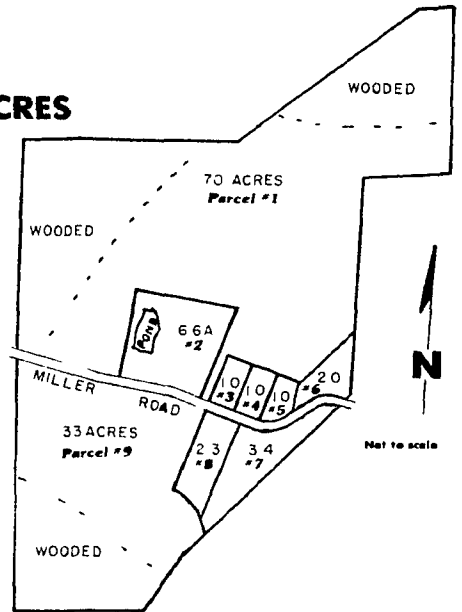


LOCATED APPROXIMATELY 12 MILES SOUTH OF HARRISBURG, PENNSYLVANIA. TAKE EXIT 13 OFF I-83, WEST ON RT. 382, 2 MILES TO YORK ROAD, TURN LEFT AND PROCEED 1/4 MILE TO MILLER ROAD, TURN LEFT 1/4 MILE TO PARCELS OF LAND.

9 PARCELS — 120 ACRES

- PARCEL #1: 70 ACRES partially wooded
- PARCEL #2: 6.6 ACRES with a 1 acre pond existing septic system and well
- PARCEL #3: 1 ACRE partially wooded with approved perk test and probes
- PARCEL #4: 1 ACRE partially wooded with approved perk test and probes
- PARCEL #5: 1 ACRE partially wooded with approved perk test and probes
- PARCEL #6: 2 ACRES wooded with approved perk test and probes
- PARCEL #7: 3.4 ACRES partially wooded with approved perk test and probes
- PARCEL #8: 2.3 ACRES wooded with approved perk test and probes
- PARCEL #9: 33 ACRES partially wooded

NOTE: Parcels #1 and #9 have a combined approximate total of 257,000 bd ft of virgin timber (White Oak 81 431 Red Oak 96 764 Hickory 24 611 Tulip Poplar - 30 455 Chestnut 17 138 Black Walnut - 1300 + inc 5717)



For additional information phone (717) 362 9596 or (717) 758 6004

TERMS: 10% Down Cash or Certified Check. Further terms and conditions to be given day of sale



ALLEN SHAFFER, ATTORNEY
DOCKEY & DOCKEY, AUCTIONEERS
DEPPEN, APPRENTICE

K. D. WILLIAMS, OWNER