

# Sale Reports

A Public Sale of real estate was held November 15 by Mabel F. and Alvin K. Haak, Sr., 523 W. Washington Ave., Myerstown, Leb. Co., Pa.

The 2½ story frame dwelling, butcher house, bank barn, 2 car garage and work shop on a 15 acre plot was sold for \$112,000.

Auctioneers were Weik & Weik.

xxx

A Public Sale of antiques and real estate was held November 15 by Grace H. Klunger in the village of Nuremberg, Pa.

The 2½ story frame dwelling on a 50x150 lot was sold for \$20,000. Other items sold were: Oak Pedestal Table \$335, Oak China Closet \$130, Oak Server \$80, Oak Buffet \$80, Oak High Chest of Drawers \$180, 2-door Jelly Cupboard \$190, Rope Bed \$130, Two 3 pc. Wicker Sets

\$350 & \$600, Kitchen Cabinet \$200, 4-leg Cherry Table \$190, 5 leg W. Extension Table \$165, Victor Talking Machine Style 8 \$575, Bisque Head Dolls \$130 & \$240, 2 Salesman's Sample Stetson Hats 2" high \$35 each, Tiffany Type Table Lamp (reverse painting) \$270, 3 R.S. Prussia Bowls \$65 to \$190, 7 pc. R.S. Germany Choc. Set \$250, Tool Chest w/Hex Signs \$105, Wooden Molding Planes \$3 to \$75

each, Wooden Brace w/brass inlay \$75, Kentucky Rifle w/Curlly Maple Stock \$900, White Satin Glass Gone-With-Wind Lamp \$450, 3 pc. Living Room Suite \$170 and York Safe \$185.

Dockey & Dockey were the auctioneers.

xxx

A Complete Liquidation of Smith's Dairy, Inc., located between Palmyra and Mt. Gretna off Route 117 was held November 15 by the owners. There were buyers from not only Pa. but also Del., N.J., Md., and N.Y.

The 89.7 acre farm with 70 acres tillable, 2½ story

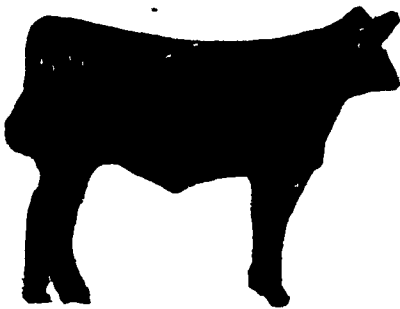
sandstone dwelling, dairy plant building and in ground fuel tanks was sold for \$2400 an acre of \$216,000 to Jesse Sigler, R.D., Palmyra, Pa

Other prices were: Caterpillar Diesel Generator \$5400, GM Diesel Generator \$1800, Divco 1965 Diesel Truck \$1775, Seal-O-Matic Paper Filler & Former \$4100, Homogenizer \$1725, Fitz Water Wheel \$925 and 1959 Willys Jeep \$950. A Cherry-Burrell short time system was sold for \$1600 and a 35'x40' steel building for \$2200.

Kerry A. Pae of Stoney Creek Auction Co. was the auctioneer.

## 4th ANNUAL GREAT EXPECTATIONS CLUB CALF SALE

All calves will be: Pre-Conditioned & Halter Broken



Approximately 45 specially selected calves will sell. These full bloods and their crosses sell:

ANGUS, CHIANINA, MAINE ANJOU, SIMMENTAL, LIMOUSIN AND HERFORD

THIS WILL BE OUR BEST SALE YET!!! DON'T MISS IT!!!

SALE DATE: NOVEMBER 28, 1980 8:00 P.M. SHARP

SHADY LANE SALE BARN

Quarryville, PA

¼ Mile West of Quarryville of Rt. 372 on Oak Bottom Rd. For More Information Contact: DONALD C. WALTER RD 2 Airville, PA Ph: 717-862-3366

## PIGS

STATE GRADED SALE

FRI., NOV. 28 1:30 P.M.

AT

WESTMINSTER

LIVESTOCK AUCTION Westminster, Md. Phone (301) 848-9820

## PUBLIC AUCTION SALE

DUE TO PREVIOUS CHAPTER 11 PROCEEDINGS IN BANKRUPTCY

51 ACRE TRACT OF INDUSTRIAL LAND WITH TWO LARGE WAREHOUSING/PROCESSING BUILDINGS USED AS A COMMERCIAL EGG PRODUCING FARM. ALSO, ADDITIONAL NEWLY RENOVATED RESIDENCE OUTSTANDING EGG PRODUCING EQUIPMENT. ALSO, CONTINENTAL BOILERS, ALLIS CHALMERS GENERATORS, JOHN DEERE FRONT END LOADER AND BULLDOZER SPRINGVILLE POULTRY FARM

Sale on the Premises - RT. 29, DIMOCK, PENNSYLVANIA. (35 MILES NORTH OF SCRANTON)

TUESDAY, DECEMBER 9

AT 10:00 A.M.

Real Estate. Parcel One is improved by a 51 Acre ± commercial egg producing poultry plant including modern concrete block processing building with five laying houses and modern pullet growing building with two pullet houses. Also two story four bedroom residence. Parcel Two is improved by a newly remodeled and insulated two story vinyl sided 4 bedroom residence with attached two car garage. Lot size 1.04 Acres ±.

Chattels: 3 Allis Chalmers Model E 575 Brushless A/C, Type BGKB, 200KW, 250KVA, 6 Cylinder Diesel Generators, 2 Continental 100 HP 1970 Oil Boilers, John Deere 450B front end loader, John Deere 350 Bull Dozer, Clark 4000 lb propane forklift, 3-7.5 HP Freon refrigeration compressors, Ingersol Rand type 30, Model 71T2E 10 HP air compressor, refrigeration blowers, hand tools, Graco pressure pump, pallet jack, 4000 asst steel milk cases, heavy duty chain, asst office equipment, Seymour 6 wide egg washer, Seymour Model SFM Flat Washer, Staalkat Egg candaling booth, Staalkat 35 case/hr egg grader with conveyors, 37 Kitson Endless Chain Poultry feeders, 20 Reliance variable speed drives for egg belts, 7 20 ton Butler feed hoppers, 7-10 Butler feed hoppers, 120 ft 12 inch rubber belt conveyor, Approx 200 plastic chicken crates, etc. And many, many more items too numerous to mention

NOTE This modern farm is ideal for any type of poultry production as well as any number of commercial/industrial warehousing and processing uses. Contact auctioneers for plats and/or additional information

Directions - I-81 to Exit 58W - Clarks Summit (Rt 6) Rt 6 West to Rt 29 Turn right (North) on Rt 29 approx 17 miles to sale Enter Poultry Farm at Loudon Hill Dairy Farm

Terms of Sale. Real Estate - A deposit of 15% of the purchase price, in cash or certified check, at time and place of sale

Chattels Full payment in cash or certified check is required at time and place of sale. Write for sale catalogue, complete terms of sale, etc

Inspection Monday, December 8, from 11 00 a.m. to 3 00 p.m. or by special appointment with the auctioneers

MICHAEL FOX ASSOCIATES, INC.

Executive Offices Suite 1915

Charles Center South, 36 South Charles Street Baltimore, Maryland 21201 (301) 332 1333 Washington (301) 621-1776 Philadelphia (215) 564 1175

## PUBLIC SALE

OF 13 ACRE FARM AND PERSONAL PROPERTY SATURDAY, NOVEMBER 29, 1980

At 10 A.M.

Located at Jct. of Rte. 625 & Lauschtown Rd., north end of Bowmansville. Brecknock Twp., Lanc. Co., Pa.

REAL ESTATE OFFERED AT 11 A.M.

HOUSE - 2½ story frame, tin roof, full basement. 1st flr. has kit., din. rm., liv. rm., and utility room. 2nd flr. has 3 bedrooms & full bath. Water supply - well & pressure system, public sewage available.

BARN: Frame bank barn with horse stable & open stable for cattle set up for tobacco hanging. Land - approx. 13 acres. Approx. 10 acres tillable, small stream, terrain very gentle slope. Inspection: Anytime by appt.

Terms: 10% dn. day of sale, 45 day settlement. Call: HORNING FARM AGENCY, INC. 215-286-5183.

### PERSONAL PROPERTY

2 nice 3 pc. Oak Bedroom Suites; Matching Oak Nursery Rocker & Chair; 2 pr. Oak Cane Seated Chairs; Oak Sideboard; Oak Round Table with 6 Chairs; Set of 6 Oak Cane Seated Chairs; Jelly Cupboard; several nice Oak Rockers; also Platform Rocker; Organ Stool; Treadle Sewing Machine; Small Stands & Tables; several Oak Stands; Small Table with Drawer; Old Woodbox; Blanket Chest; Different Sizes Crocks & Jugs; lot of Canning Jars; Portable Kerosene Heater; 1 Blue Flowered Jug; Kerosene Lamp; Coal & Wood Heater; Old Floor Model Radio; Porch Bench; Dryer; Comforts; Blankets; Shawls; Throw Rugs; lot of Woven Strip Carpet; Sunbeam Elec Mixer; South Bend Kitchen Range; Black & White Kit. Range; Elec. Stove; Westinghouse Refrigerator; several Sets of Dishes; Pitchers & Glasses; Sherbets; Fruit & Veg Dishes; a few Bone Handled Knives & Forks; Kettles & Utensils; Earthen Pie Plates and many other pieces not mentioned 2 Sausage Stuffers; Lantern, Step Ladder, new Grand Prix 22" Lawn Mower; 10 Ton Mixed Hay, also other items not mentioned.

Sale at 10 A.M. Real Estate at 11 A.M.

Terms by

HEISTER Z. WITWER

& BLUE BALL NATIONAL BANK Wentz & Weaver, Atty's.

Elton & Alvin Horning Auctioneers HORNING FARM AGENCY, INC Main Street Morgantown, Pa. 215-286-5183

## PUBLIC SALE

OF 73.5 ACRES

SCHUYLKILL CO. FARM

THURSDAY, NOVEMBER 27

(THANKSGIVING DAY) - 2:00 P.M.

Located along Panther Valley Road (approx. 2¼ mile off Rt. 183 - at Cressona toward Hidden Valley Golf Course - 1 mile beyond 40 & 8 Club on Panther Valley Rd.) Wayne Township, Schuylkill Co., Pa.

73.5 ACRE FARM

TRACT 1 containing 13.5 ACRES.

2½ Story Vinyl Sided Dwelling

containing 4 bedrooms and full bath (separate shower stall) on second floor.

First floor contains living room, den, ½ bath, office, enclosed porch, large eat-in kitchen. Oil fired hot water heat. 12" insulation attic area.

Frame Bank Barn

3-Frame shops. Tract No. 1 700' (more or less) road frontage. SMALL STREAM with 8 stocked trout dams. Orchard - 8 acres (approx.) cultivated.

TRACT 2 -

60 ACRES (more or less)

52 acres tillable - 5 acres woodland. SPRING. Beautiful view of surrounding countryside 900 ft. (more or less) road frontage.

Tracts No. 1 & 2 will be offered separately or as one whole unit.

This farm is located in picturesque Panther Valley with excellent views. Stream. Easy access to metropolitan areas - 30 miles north of Reading also near Golf Course. Be sure to inspect this attractive property.

Open House - Sat., Nov. 15 & Sat., Nov. 22 from 12 noon to 4 p.m. or for information or inspection call are 717-739-2777.

TERMS BY:

JOSEPH E. STOFFER SANDRA L. STOFFER

T. Glenn Horst, Auct.

Timothy G. Horst, Auct.

717-859-1331

W. Alan Williams, Atty.

## PUBLIC SALE

OF

REAL ESTATE

(41 ACRE FARM)

HOUSEHOLD GOODS,

A-FARMALL TRACTOR

1967 & 1970 BUICKS

FARM MACHINERY, COINS

SAT., NOV. 29

at 12:00

Loc. along Osceola Drive, R.D. #1, Drumore, Lanc. Co., Pa. (Take #272 about 2 miles south of the Buck, turn right on to Osceola Drive, go about 1 mile to sale)

REAL ESTATE: "2½ story old stone house w/frame enclosed porches, w/6 rooms and full bath w/ground level kitchen. Also, an attached 1-story cement block 2-car garage & work shop. Separate 2-story frame bank barn w/3 barn floors, hay & straw mows, horse & cow stables, stripping room & tobacco cellar, scaffolding for 2½ acres tobacco. Other bldgs: frame hog pen & equip. shed. Total of 41 acres of land: 35 tillage; 5 meadow (good stream running width of farm); 1 wood land. Property open for inspection Sat's 8, 15 & 22 & Sun's 9, 16 & 23 from 1 till 3. Real estate to be sold at 2:00 Settlement date - March 1, 1981 - 10% down day of sale.

2 G.E. freezers, Philco refrigerator, G.E. auto. wash, mach, Frig. Dryer, Frig. elec. stove, G.E. refrig. Magnavox Table TV & Philco port. TV, uphols. & other furniture, every day glassware & china, cooking utensils, A-Farmall tractor w/cultivators, etc., John Deere 3-sec. spring harrow, Oliver 2-bottom 14" Radex, flat bed wagon, hay & straw, tobacco lath, misc tools, 1970 Buick 2-dr. Electra hard top car & 1967 Buick. Silver coins, Red Seal \$2.00 bills, silver seal \$1.00 bills, 1928 gold seal \$500 bill. Other articles not listed. NO OUT OF STATE CHECKS ACCEPTED. Food served.

Sale by

ELMER E. PROBST, ESTATE

Kenneth H. Probst, Executor

Esther A. Morris, Executrix

Elsie A. McComsey, Executrix

MAY & MAY

Louis S. May Atty.

Roy C. Probst Auctioneer 464-3190

Eric R. Probst App.

Howard E. Shaub, Auctioneer 464-3541