

# York County DHIA Monthly Report

OCTOBER 1980

YORK — 1580 pounds butterfat and 39,781 pounds milk was produced in 305 days by Elv a five year old Holstein owned by George Knight, R2 Airville  
 Second high was Inka a five year old Holstein who produced 1161 pounds butterfat and 29,111 pounds milk in 305 days, owned H.E. Fetrow & Sons, R4 York  
 High herd was Smyser's Richlawn, East Berlin Rd., York with 73 Holstein cows producing 56.5 pounds milk and 1.99 pounds butterfat  
 Second high was Sinking Spring Farms, R5 York with 67 Holstein cows producing 48.8 pounds milk and 1.96 pounds butterfat

OWNER	BREED	NO COWS	% DAYS IN MILK	LBS. MILK	% FAT	LBS FAT
David Gemmill	00	58.0	140.9			
Smysers Richlawn	3	73.2	84.7	56.5	3.5	1.99
Sinking Spring Fm	3	67.9	85.0	48.8	4.0	1.96
Beshore Farms	3	44.4	90.5	55.6	3.5	1.95
H Fetrow & Sons	3	77.3	91.0	49.0	3.8	1.87
Leonard W Greek	3	25.5	98.0	49.7	3.7	1.82
Avalong Farms Inc	B3	29.1	93.9	47.1	3.8	1.81
Thomas A Boyer	3	36.7	87.3	46.1	3.9	1.79
Claude M Cooper	B3	38.2	97.3	46.5	3.8	1.79
Wayne B Mummert	B3	70.7	85.1	47.1	3.8	1.78
Lynn Wolfe	3	49.4	90.9	48.3	3.7	1.78
Avalong Farms Inc	3	29.0	88.1	44.8	3.9	1.73
Leonard W Greek	3	25.5	90.4	44.6	3.9	1.72
Phillip Laughman	3	25.0	91.8	44.1	3.9	1.70
Richard E Stough	B3	32.4	90.7	41.9	4.0	1.67
Leland Stanford	B3	33.0	80.7	49.1	3.4	1.65
Paul R King	3	48.0	78.2	41.0	4.0	1.63
Stump Acres	B3	108.4	93.8	40.6	4.0	1.62
J Donnell Taylor	B3	92.9	94.7	47.3	3.4	1.62
B Robert Charles	B3	44.5	82.0	44.2	3.7	1.62
Kevin Holtzinger	B3	144.1	86.1	44.1	3.7	1.62
David Stewart	3	110.4	88.7	42.1	3.8	1.61
C Robert Kilgore	B3	42.3	91.9	46.3	3.5	1.60
D & R Burchett	G3	110.0	87.5	40.4	4.0	1.60
William Ruppert	B3	59.6	80.4	41.2	3.9	1.59
Titus & Merle Walker	G3	43.0	94.8	42.2	3.7	1.58
Earl Fuhrman	B3	77.0	84.9	44.3	3.5	1.57
Leroy Bupp	B3	79.6	89.0	42.2	3.7	1.57
D & R Burchett	G3	106.5	91.0	43.9	3.6	1.57

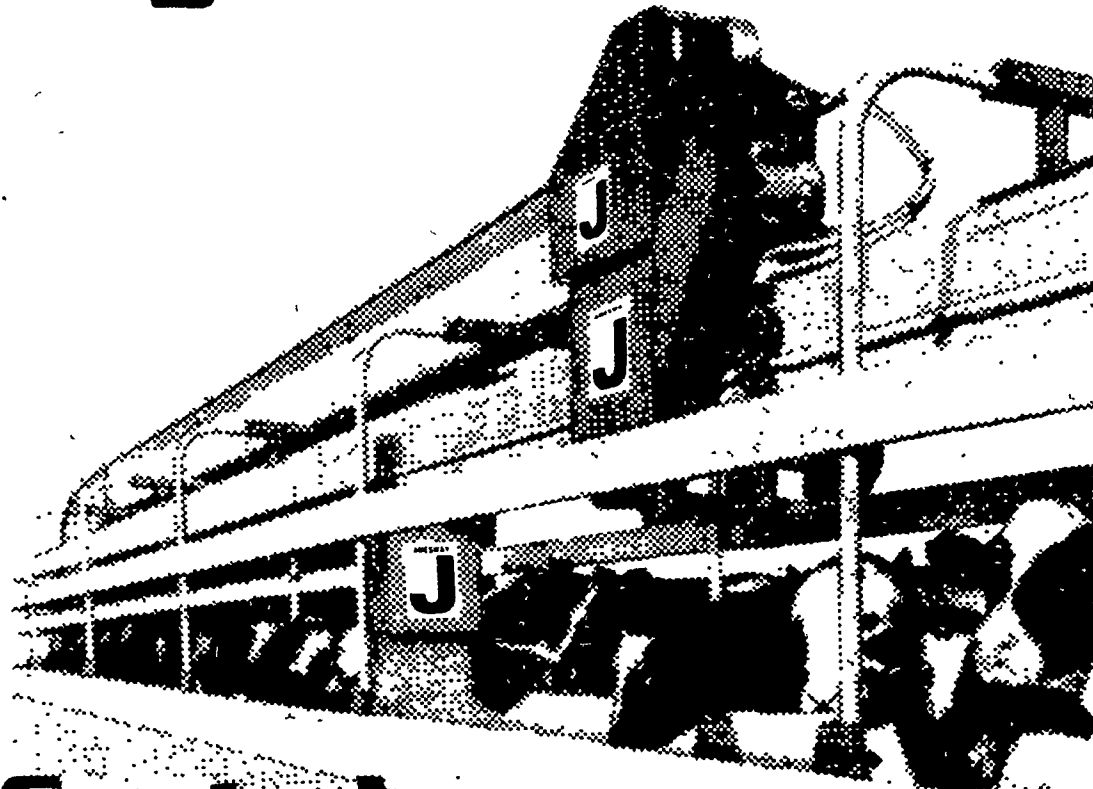
## Lancaster Farming, Saturday, November 22, 1980—D7

Melvin R Lehr	B3	47.9	89.9	42.9	3.7	1.57
Eisenhart Bros	G3	60.4	88.3	43.6	3.6	1.56
Hidden Springs Fm	B3	78.2	81.0	39.7	3.9	1.55
Honeycrest Fm	B2	98.4	88.4	33.7	4.6	1.55
Adrian Rinehart	B3	94.7	88.1	43.1	3.6	1.54
Carl Anderson	B3	47.2	90.5	41.7	3.7	1.53
Fawn Meadow Hol	B3	62.2	85.0	44.0	3.5	1.53
Wayne E Myers	B3	35.0	73.6	41.2	3.7	1.52
Vincent C Webb	B3	67.0	91.7	40.9	3.7	1.51
T Edwin Johnson	3	53.5	78.5	41.6	3.6	1.51
R & M Stewart	3	48.1	91.7	39.8	3.8	1.50
Elvin G Molson	B3	107.9	82.2	40.6	3.7	1.50
J E Baker Co	B3	43.9	82.6	28.6	3.9	1.49
Rodman C Thompson	3	57.2	80.1	38.6	3.9	1.49
Avalong Farms Inc	2	47.6	84.8	31.1	4.8	1.49
Rick L Cook	B3	78.2	84.7	37.5	4.0	1.49
Hidden Springs Fm	B3	78.2	84.1	38.3	3.9	1.48
B Robert Charles	B3	45.7	80.1	44.5	3.3	1.48
Rutter Bros	2	80.1	86.3	29.2	5.0	1.47
Fawn Valley Farm	B3	72.0	83.6	38.7	3.8	1.46
Geo Knight	3	123.9	86.0	37.8	3.8	1.45
Honeycrest FM	B2	97.1	86.6	33.2	4.3	1.43
Gum Tree Farm	3	43.3	81.9	40.1	3.5	1.42
Guy Leader & Sons	2	86.9	87.5	31.1	4.6	1.42
Fred Sprenkle	3	34.9	78.1	37.3	3.8	1.41
Edwin L Calhoun	B3	44.0	92.9	41.0	3.4	1.41
Perrydell Farms	B3	175.7	84.5	40.6	3.4	1.38
Harold Brown	3	64.0	90.1	38.9	3.5	1.37
Wayne L Swetzer	B3	57.0	89.6	38.7	3.5	1.36
R & F Feeser	3	110.9	86.6	36.7	3.7	1.35
Little Creek Fms	G3	239.5	87.4	36.4	3.7	1.35
Jacob S Stoltzfus	00	36.0	111.1			
Doll Zirkle	B3	32.9	85.7	39.3	3.6	1.43
David M Emig	G3	57.0	83.4	33.7	4.1	1.39
David M Emig	G3	57.0	84.2	35.3	3.9	1.36

OWNER	NAME OR NUMBER	BREED	AGE	DAYS IN MILK	LBS. MILK	% FAT	LBS FAT
Geo Knight							
Bambi	3	6-4	305	18,387	3.2	591	
K 6	3	5-6	305	22,056	3.4	741	
Elv	3	5-9	305	39,781	4.0	1580	
Whip	3	4-4	305	16,498	3.5	582	
Diane	3	5-2	305	21,124	3.5	737	
Cathy	3	4-1	305	14,515	3.7	532	
34	3	4-2	305	17,895	4.0	710	
31	3	3-3	305	14,930	4.0	593	

(Turn to Page D8)

# Volume-Belt<sup>®</sup> cattle feeder by JAMESWAY<sup>®</sup>



## Costs less

Simple design gives you big-capacity performance at a lower cost per foot than other feeders in its class. Few moving parts to cause feeding slowdowns. Takes only 1 hp to load up a 190 ft. bunk, so you save on power costs while you save feeding time. Fast, quiet and dependable, too.

See us for systems and service that help make the good life better.

### AGRI EQUIPMENT INC.

2754 Creek Hill Rd Leola, PA 17540  
717-656-4151

### DEPENDABLE MOTORS

Honey Brook, PA  
215-273-3131  
215-273-3737

### ROVENDALE SUPPLY

RD 2, Watsonstown, PA 17777  
717-538-5521

### I. G. SALES

Rt. 113, Box 200  
Silverdale, PA  
215-257-5135

### HENRY S. LAPP

RD1, Cains, Gap, PA 17527  
717-442-8134

### SOLLENBERGER SILOS

RFD 2, Chambersburg, PA  
717-264-9588

### G. HIRAM BUCHMAN, INC.

Rte. 519 - N. off Rte. 46  
P.O. Box 185  
Belvidere, NJ 07823

### HARRY L. TROOP

Rt. 1 Cochranville, PA 19330  
215-593-6731

### J. A. SWOPE

Box 121, RD1  
Myerstown, PA  
717-933-4758

### ERB & HENRY EQUIP., INC. DETWILER SILO REPAIR ED LIPSCOMB EQUIPMENT

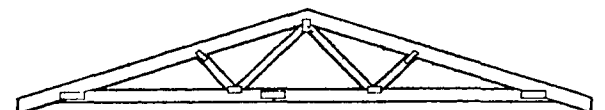
22-26 Henry Avenue  
New Berlinville, PA  
215-367-2169

Rt. 2, Newville, PA  
717-776-7533

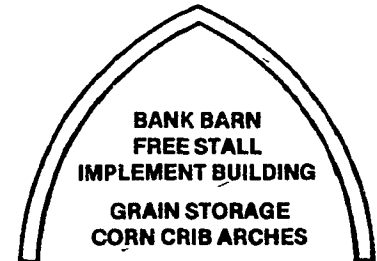
Rt. 1, Box 321  
Eglen, WV  
304-735-6286

# Rigidply Rafters

## PRODUCTS WE MANUFACTURE AND STOCK

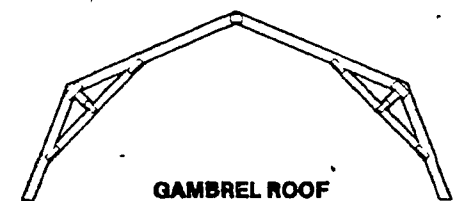


WOOD ROOF TRUSSES

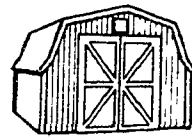


BANK BARN FREE STALL IMPLEMENT BUILDING  
GRAIN STORAGE CORN CRIB ARCHES

LAMINATED RAFTERS  
CUSTOM BUILT — WILL MATCH



GAMBREL ROOF



MINI BARN



GREENHOUSE

### Items we stock:

- Laminated Straight Beams
- Farral Painted Galvanized Roofing
- Special Orders and Accessories.
- Treated Timbers and Planking
- Barn Floor Planking T/G
- Cannonball Door Track
- Calf Hutches - Lumber

Versability... also beauty... now with faster, stronger and more economical construction for all types of farm and commercial buildings

Telephone (717) 866-6581



MANUFACTURERS of LAMINATED RAFTERS and WOOD ROOF TRUSSES

RICHLAND RD1, Pennsylvania 17087  
OAKLAND RD2, Maryland 21550