

Poultry Markets

Weekly New York Egg Market

	From Friday, Nov. 7 to Nov. 13				Thurs.
	Fri.	Mon.	Tues.	Wed.	
WHITE					
Jumbo	82	82	82	83	84
Ex Large	77	77	77	78	80
Large	75	75	75	77	79
Mediums	72	72	72	74	76
Pullets	62	62	62	64	66
BROWN					
Jumbo	90	90	90	92	92
Ex Large	87	87	87	89	89
Large	86	86	86	88	88
Mediums	Unquoted				
Pullets	Unquoted				
Peewees	Unquoted				
Off Grade					
Large	72	72	72	74	76
Checks	47	48	48	48	48

Tone. Large barely steady Balance medium easy
Copyright 1980 by Urner-Barry

Nest Run Eggs

Prices are from Egg Clearinghouse, Inc., (ECI) Durham, N.H. and reflect trading prices for gradable nest run eggs (GNR) on ECI, a nationwide trading center for producers, packers and marketers. GNR eggs are classified by weight in 30-dozen cases, and traded in lots of either 300 or 750 cases. Prices are FOB buyers dock, and are computed Tuesday and Thursday of each week. This week's prices for each classification were

Classification	Net Weight Per Case	Nov. 11 Tuesday	Nov. 13 Thursday
Class 1 - Large	48 lbs.	60	64
Class 2 - Large	45 lbs.	57	60
Class 3 - Medium	42 lbs.	55	55
Class 4 - Small	39 lbs.	47	48
Breaking Stock	48 lbs.	55	56
Checks	48 lbs.	50	51



Copyright 1980 by Lancaster Farming
P.O. Box 366 - Lititz, PA 17543
Office: 22 E. Main St., Lititz, PA 17543
Record-Express Office Building
Phone: Lancaster 717-394-3047
or Lititz 717-626-1164

Robert G. Campbell, Publisher
E. Curtis Harler, Editor
Sheila M. Miller, Associate Editor
Dick Anglestein, Staff Writer
Debra L. Koontz, Staff Writer

CORRESPONDENTS
Mary Myers, Adams County
New Oxford 717-624-8005

Laurel Shaeffer, Berks County
Bernville 215-488-7475

Jane Bresee, Bradford County
Ulster 717-358-3346

Ruth Ann Benedict, Franklin County
Waynesboro 717-762-4398

Sally B. Bair, Lancaster County
Columbia 717-285-4926

Susan Kauffman, Lancaster County
Peach Bottom 717-548-3131

Vivian Paul, Northampton County
Bath 215-837-1363

Joyce Bupp, York County
Seven Valleys

Subscription Price:
\$7.50 per year; \$13.00 - 2 years
\$12.00 per year outside of
PA, NJ, MD, DE, NY, VA & WV

Established November 4, 1955
Published every Saturday
by Lancaster Farming, Lititz, PA
Second Class Postage paid at Lititz, PA 17543
USPS 304-040

For address change form or new subscription
see Classified Section.

Members of Newspaper Farm Editors Assn., Pa. Newspaper
Publishers Association, and National Newspaper Association.

N. E. Weekly Shell Egg Report

Tuesday Nov. 11
Report supplied by USDA
Prices paid per dozen Grade "A" Brown eggs in cartons
delivered to retail stores:

	Ex. Large	Large	Medium	Small
MASS +	87-94	87-89	88-87	63-70
Mostly	89-92	87	85	65-68
N. HAMP	82-89	82-89	75-82	58-65
Mostly	84-87	84-81	77-80	66-68
R.I.	91-92	91-82	84-85	67-68
VERMONT	89-98	89-96	82-90	-
Mostly	91-92	90-91	84-85	-
MAINE	87-89	87-89	80-82	63-65

+ Includes Central and Western Sections only

St. Louis Cattle

Thursday, November 13
Report supplied by USDA
Receipts This Week 5000
Week Ago 5200
Year Ago 6300

As compared to the previous week close, slaughter steers 50-1.00 lower, except Holstein steers steady. Slaughter heifers fully 50-1.00 lower. Cows 1.00-2.00 higher. Bulls steady. Slaughter supply mainly Choice and Choice and Prime 2-4 slaughter steers, with several lots 3-5 steers and heifers, around 35% heifers and 15% cows

SLAUGHTER STEERS
Mixed Choice and Prime 2-4 1050-1250 lbs 65.50-66.00, part load early 66.25, 3-4 1075-1250 lbs 62.50-65.00, 4-5 1150-102.00 lbs 60.25-61.00 Choice 2-4 950-1275 lbs 64.00-65.50 Mixed Good and Choice 2-4 900-1175 lbs 63.00-64.50 Good 2-3 900-1150 lbs 61.50-63.50 Standard to Good 2-3 1050-1400 lb Holsteins 57.00-60.00

SLAUGHTER HEIFERS.
Mixed Choice and Prime 2-4 875-1050 lbs 63.00-63.50, couple packages early 64.00, closing sales mostly 63.00, 3-4 925-1075 lbs 61.00-63.00; 4-5 925-1100 lbs 55.00-60.00, part load 4 to mostly 5 1095 lbs 58.00. Choice 2-4 850-1050 lbs. 62.00-63.50, closing 62.00-63.00; 750-850 lbs. 61.00-62.50, closing 61.00-62.00. Mixed Good and Choice 2-3 700-975 lbs. 60.50-62.00 Good 2-3 700-950 lbs. 57.50-60.50

COWS Closing week sales Utility and Commercial 2-4 42.00-45.00. Boning Utility 1-2 45.00-47.00. Cutter 1-2 40.00-44.00. Canner and low Cutter 1-2 35.00-40.00

BULLS. Yield Grade 1-2 1050-1900 lbs. 50.00-55.00

FEEDERS (Including around 2000 at the regular Thursday auction). Feeder steers and heifers uneven, both classes under 600 lbs. firm to 1.00 higher, over 600 lbs. Steady to 1.00 lower. Supply mainly medium frame 1-2 400-700 lbs steers and 300-700 lbs. heifers

FEEDER STEERS.
Medium Frame 1 350-500 lbs. 74.50-80.00, 500-600 lbs. 71.50-78.50; 600-700 lbs 70.00-75.00; scattered lots mostly fleshy 850-975 lbs 62.50-65.75 Medium Frame 1-2 and Small Frame 1. 300-500 lbs 65.00-72.75, mostly 69.00-72.00. Large Frame 2 Holsteins: Few lots 780-860 lbs 56.75-57.25.

FEEDER HEIFERS
Medium Frame 1. 325-500 lbs. 63.00-70.25, mostly 65.25-69.25, 500-600 lbs 62.00-66.00, lot thru 510 lbs. 68.50; 650-700 lbs. 58.00-61.75. Medium Frame 1-2 and Small Frame 1: 325-500 lbs 58.00-63.00

STOCK COWS Scattered lots medium frame 1-2 700-825 lbs. young and mid-dleaged 42.25-48.00

Fogelsville Poultry

Fogelsville, Pa.
Tuesday, November 4
Report supplied by USDA
(Prices paid dock weights, cents per pound, except where noted)

HENS, LIGHT TYPE
range 5
HENS, HEAVY TYPE
range 5-35.
DUCKS range, 50-72, mostly 65
GEESE range 45-60, mostly 60
TURKEYS, TOMS AND HENS: range 64
RABBITS range 25-60, mostly 50
GUINEAS. range 130-150, mostly 135.
PIGEONS (Per Pair) range 2 15-4.00, mostly 2 25
TOTAL COOPS SOLD 350

Delmarva Poultry

Wednesday, November 12
Report supplied by USDA
RANGE U.S. Grade A 50-53, Plant Grade 49-52, Premium X U.S. Grade A 55.00



Philadelphia Eggs

Wednesday, November 12
Report supplied by USDA
A Extra Large 75-80; A Large 74-78; A Medium 70-74

Baltimore Eggs

Wednesday, November 12
Report supplied by USDA
Demand slow to fair
Supplies adequate
Cartoned eggs prices to retailers, state graded (min one case sale) white
Grade A Large 78-80
Grade A Medium 75-77

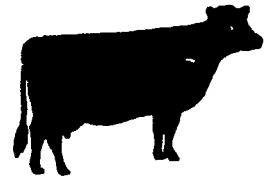
Eastern Pa. & N.J. Poultry

Wednesday, November 12
Report supplied by USDA
Prices paid at farm light type hens 11-12, mostly 11-11 1/2
F O B Plant 14-15
HEAVY TYPE HENS
TFEWR

Special Feeder Cattle Sale

Roanoke, Va.
Thursday, November 6
Report supplied by VDA
There were 1,038 head sold. All cattle were graded by Representatives of the VDACS's Division of Markets, Livestock Section on USDA standards and sold by the hundredweight.

STEERS: Medium Frame No. 1: 500-600 lbs. 74.00-80.50; 600-700 lbs 71.50-76.75; 700-800 lbs. 69.25-73.00; 800-900 lbs. 65.50-72.00; 900-1000 lbs. 60.75-65.75. Large Frame No. 1: 500-600 lbs. 80.00-83.00; 600-700 lbs 76.00-78.00; 700-800 lbs. 68.75-72.25; 800-900 lbs. 61.25-67.25. Small Frame No 1. 500-600 lbs. 71.00-74.50; 600-700 lbs. 70.75-74.50; 700-800 lbs. 71.50-71.75. Medium & Large Frame No. 2: 500-600 lbs. 69.00-70.00; 600-700 lbs 66.00-69.50; 700-800 lbs. 62.25-66.50; 800-900 lbs. 61.50-66.00.



TOP OF THE HOG MARKET

DANVILLE LIVESTOCK MARKET
OLD ROUTE 11, DANVILLE, PA 17821
717-275-2880

HORSE SALE HELD 3rd SATURDAY OF THE MONTH

Market your cattle & hogs the auction way.

Sale every Monday 2 P.M.
Melvin M. Lehman (Owner)

When is \$200⁰⁰ less than \$190⁰⁰?
Do you know what your feed cost is per lb. of eggs or per dozen of eggs on your present flock?

Moyer's offers you the new DEKALB DK "Inflation fighter" layer. A bird eating .21 lbs. of \$200/Ton feed will save you 9¢ per 100 hens per day over one eating .23 lbs. of \$190/Ton feed.

On a 60,000 bird flock this amounts to \$378 a week difference! This could be the difference of profit or loss on your next layer flock.

We've got more reasons to look at Moyer's DEKALB for your next flock. Give us a call.

Moyer's CHICKS, INC.

DEKALB
BROWN & WHITE
EGG LAYERS

Quakertown, PA. 18951
(215) 536-3155

HUBBARD
WHITE MT.
BROILERS

