

HARVESTORE®-SLURRYSTORE® DAIRY TOUR

Sponsored By Norman Gundrum, Penn-Jersey HARVESTORE® Representative

WEDNESDAY, NOVEMBER 19, 1980



Robert Connolly (Left) & Norman Gundrum

STOP #1: ROBERT CONNOLLY, CEDAR HILL FARM, ORAMS LANE, OXFORD, NJ

Bob has been feeding HARVESTORE-processed High Moisture Corn, balanced with soybean oil meal and linseed oil meal, from a 2035 Unit since 1976. His herd of 64 Holsteins is averaging 19,370 lbs. milk and 671 lbs. B.F. Corn silage and baled hay make up the forage program. The Connollys built a 4214 Slurrystore with an adjacent reception pit in 1980. The barn cleaner drops the manure from the 60-cow tie stall barn into the pit, which holds 6 days' manure. The entire pit is pumped into the Slurrystore in 15 minutes. Bob's bedding cost for wood shavings is \$100 per month. He handled 5½ months' manure from 60 cows in 40 hours with one tractor and one spreader and saved money on fertilizer at the same time!

Meeting Place:

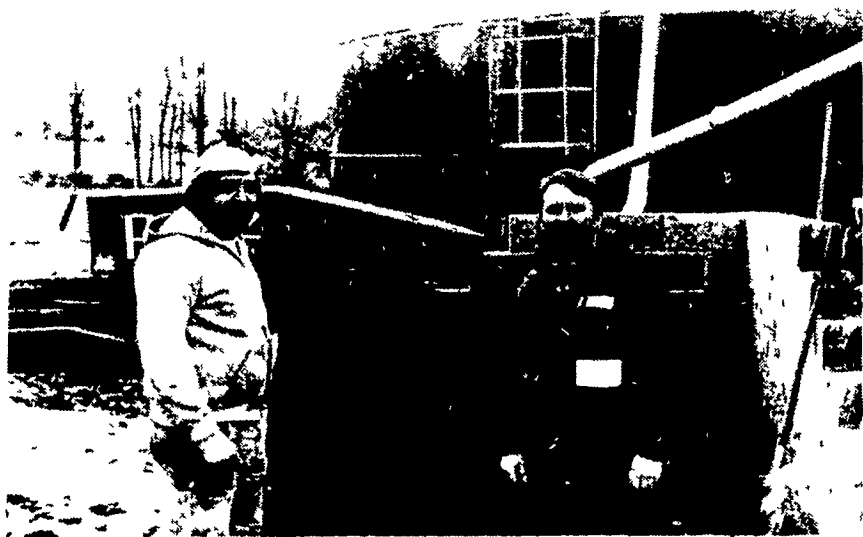
Oakwood Lanes Bowling Alley,
Route 31, North of Washington, NJ
11:00 A.M.



Robert Connolly Feeding

Lunch Will Be Served

JULIUS DIRISIO SAYS HIS D.H.I.A. RECORDS SHOW AN AVERAGE INCREASE IN RETURN OVER FEED COST IS \$1,342 PER COW SINCE OWNING A HARVESTORE® SYSTEM!



Julius Dirisio (Left)

STOP #2: JULIUS F. DIRISIO, PINEY RIDGE FARM R.D. #1, OXFORD, NJ

Julius feeds HARVESTORE-processed Haylage and High Moisture Shelled Corn. His 45 cows are averaging 15,500 lbs. milk and 574 lbs. B.F. He is currently feeding 90 lbs. of soybean oil meal per day to the herd. No baled hay is fed. D.H.I.A. records showed an average increase in return over feed cost is \$1,342 per cow. The 4214 Slurrystore was built in the spring of 1980. The Dirisio farm is a one-man operation. There are only two tractors on the entire farm. The holding tank adjacent to the Slurrystore holds 7 days' manure, with 5 months' storage in the Slurrystore. Julius beds with one cartful of chopped mulch hay every other day.



Since purchasing a SLURRYSTORE® System, Julius only hauls twice a year — not the drudge of old-fashioned manure spreading.

Penn-Jersey HARVESTORE® Systems, Inc.

P.O. BOX 7

NEW HOLLAND, PA 17557

Phone 717-354-4051