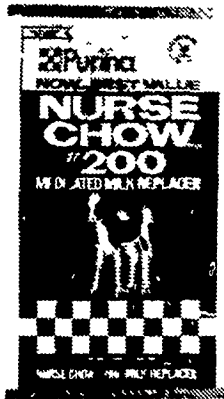


**NEW**

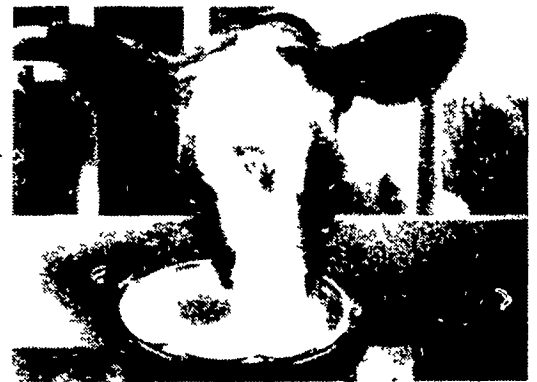
# NURSE CHOW<sup>®</sup> 200<sup>™</sup> MILK REPLACER

**TOP PERFORMANCE — LOWEST PRICE**



**\$21.50\***  
50 Lb. Bag

New Nurse Chow 200 is considered Purina's best value milk replacer. A combination of proteins deliver great performance and great value. Two antibiotics help fight scours problems.



\* Prices are subject to change based on market conditions

**See Your Purina Dealer For Details**



**CALF STARTENA Promotes Rumen Development...  
Adds Up To 15% More Growth In The First 60 Days, Compared  
To A Conventional Calf Starter Ration.**

Nothing gets calves growing faster than Calf Startena. Why? As a result of new information in rumen research, Purina found a way to make the protein and energy in dry feed more available. So calves make a more efficient use of Calf Startena...turning more of it into true body development.  
The result is an increase in feed efficiency of

up to 12%. And up to 15% faster growth rate. That's compared to a conventional calf starter.

Calf Startena provides the right combination of nutrition and energy in a palatable form that aids early rumen development. It's aimed at getting the calf ready to make the most of her first roughage later on.

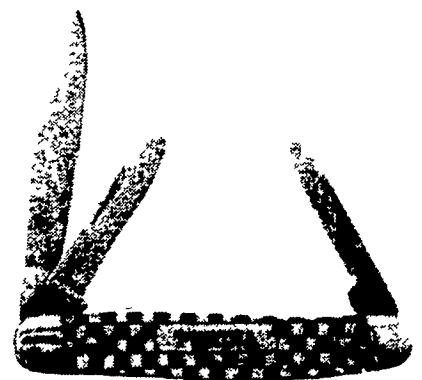
**FREE 3-BLADE CHECKERBOARD POCKETKNIFE**  
Compliments of Your Purina Dealer  
(This offer good Nov. 17th thru Dec. 19th)

**6 CALF PROGRAM**

**3 - 50 lb. Bags  
Nurse Chow 200**

**17 - 50 lb. Bags  
Calf Startena**

You will receive absolutely free, compliments of your Purina Dealer, a 3-Blade Checkerboard Pocketknife with each purchase of the "6-CALF PROGRAM" (3-50 lb. bags Nurse Chow 200, 17-50 lb. bags Calf Startena). On Purina's Calf Starting Program 0-2 months old you feed each calf 25 lbs. of Milk Replacer and approximately 140 lbs. of Purina's Calf Startena. No other feed or hay is needed for the first two months. Clean fresh water should be available at all times. Let your calves show you the benefits that Purina Research can mean to your calf raising program.



**Contact Your Purina Dealer Listed Below!**

I Want To Know More About Purina's Calf Program

Mail to: **PURINA**  
Box 366 S  
Lititz, PA 17543

NAME \_\_\_\_\_  
ADDRESS \_\_\_\_\_  
CITY \_\_\_\_\_  
STATE \_\_\_\_\_ ZIP \_\_\_\_\_  
PHONE \_\_\_\_\_

**HESS MILLS**  
PHONE 717-442-4183  
717-768-3301  
PARADISE PA 17562

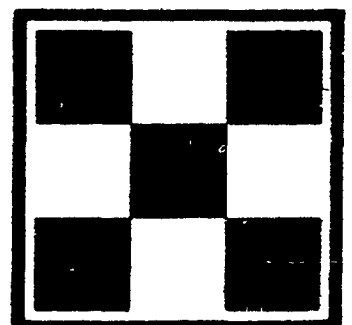
**HIGH BROS.**  
PHONE 717-354-0301  
GORDONVILLE, PA 17529

**KEYSTONE MILLS**  
John B Kurtz  
PHONE 717-354-4616 717-738-1088  
RD3, EPHRATA PA 17522

**WEST WILLOW  
FARMERS ASSN., INC.**  
PHONE 717-464-3386  
WEST WILLOW PA 17583

**MCCRACKEN'S  
FEED MILL, INC.**  
PHONE 717-665-2186  
2 NEW CHARLOTTE ST MANHEIM, PA 17545

**M. G. HENNINGER & SON, INC.**  
PHONE 717-362-3333  
BERRYSBURG PA 17005



®