

Sale Reports

A Public Sale of an 85 acre farm was held November 8 by E. Naomi Warner, 8 miles south of Red Lion along Rt. 74 in York Co., Pa.

The farm was sold to Good Brothers of Airville, Pa. for \$2000 an acre or a total price of \$170,000.

Robert L. Sechrist was the auctioneer.

A Large Public Sale of antiques was held November 8 for the Curvin E. Flinchbaugh Estate at 667 S. Main St., Red Lion, Pa. There were 386 registered buyers present from 5 states.

Some outstanding prices were: Child's Iron Sleigh & Reindeer Toy \$550, Blanket Chests \$1200, \$700 & 550,

Dry Sink \$500, Child's Miniature Dry Sink \$390, High Chest of Drawers \$500, 6 Plank Bottom Chairs \$38 each, Boston Rocker \$200, Baby Cradle \$185 and 1893 Ladies Hat Box \$105

Robert L. & Thomas H. Sechrist were the auctioneers.

xxx

A Public Sale of a 50 acre farm was held November 8 for the Herman Stoner Estate, R.D. 2, Lebanon on Kummerlugs Road. The property was sold for \$152,000 and included a 2½ story brick dwelling, 2 story brick summer house, 2 story frame garage, new metal barn, milk house and a chicken house.

Clayton C. Kleinfelter was the auctioneer.

xxx

A Public Sale of real estate, farm equipment and antiques was held November

8 by John D. Shue, R.D. 2, Red Lion, York Co., Pa.

The 10 acre farmette was sold for \$52,700 and included a 5 room log house, bank barn, summer house, shed and 3 brooder houses.

Other prices received were: Farmall H Tractor \$700, Buggy with top \$350, Little Wagon \$395, Sword \$120, Oak Bed w/high Headboard \$250, Wash Stand \$150, Drop Leaf Table \$250 and Kerosene Lamp \$36.

Preston Chronister & Sons were the Auctioneers

xxx

A Holstein Dairy Cattle Auction of 57 head was held November 6 by Kevin L. Hertzog, R.D. 2, Oley, Berks Co.

A purebred cow sold for \$1975, another for \$1925 and a 3rd for \$1875.

Sale conducted by Ralph W. Zettlemoyer Auct. Co., Inc.

Lancaster Farming, Saturday, November 15, 1980—D31

SAT NOV 15 6:30 P.M. Danville Livestock Market, horse sale. Located Old Route 11, Danville, PA. Melvin M. Lehman, owner.

SAT NOV 15 9:00 A.M. Public Sale of Real Estate, Antiques, Collectibles and Household Items Located in the Village of Nuremberg, PA, 10 miles west of Haxleton, PA. Take Exit 41 off I-81 west on Rt. 924. Follow Auction signs day of sale. Dockey & Dockey Auctioneers.

SAT NOV 15 11:00 A.M. Public Sale of Farm Equipment, Household Items, Collectibles Held in Mahantongo Valley, 3 miles south of Pritman, 3 miles north of Hegins, 1 mile south of Purple Pump Bar (Watch for auction signs day of sale along Rt. 125). Clement O. Wolfgang Owner. George and Mike Deibert Auctioneers and Realtor.

SAT NOV 15 9:30 A.M. Public Sale of Real Estate, Shop Tools, Garden Tractor, Antiques and Household Goods Located approx 1 mile off Rt. 30, west of Thomasville, turning across from the Paradise Elem School on Lake Rd., York Co., PA. Thomas M. Altland Owner. Bob and Tom Sechrist Auctioneers.

SAT NOV 15 9 A.M. Public Auction of Valuable Real Estate and Personal Property Located 5 miles northeast of Bedford, Pa. Bedford Co. 4 miles east of Bedford turnpike interchange at the late John A. Dively farm. Stanley Claycomb and Linda Muir, Auctioneers.

SAT NOV 15 2:00 P.M. Public Sale of Real Estate, Antiques, Tools, held at 523 West Washington Ave., just west of Laysers Flowers, Myerstown, Jackson Twp., Lebanon Co., PA. Conditions by Mabel F. and Alvin K. Haak Sr. G. Harvey Weik Auctioneer.

SAT NOV 15 - Public Sale of Antiques, Glass, China, Etc. Held in Adamstown Fire Hall, Adamstown, PA. H.H. Leid Auction Service.

SAT NOV 15 9:30 A.M. Complete Liquidation Smith's Modern "A" Quality Dairy located in Lebanon Co. between Palmyra and Mt. Gretna, just off Rt. 117, from Rt. 422 take Rt. 117 1/2 miles to Beech Rd., turn left on Beech Rd., go to dirt road to sale site. Smith's Dairy Inc. Owners Kerry A. Pae Auctioneer.

SAT NOV 15 9:30 A.M. Public Sale of Antiques, Garden Equipment, Household Items Located Rd 24, York, PA (1 mile east of Hellam, along old Rt. 30 Estate of Allen Gromling Blaine N. Rentzel Auctioneer.

SAT NOV 15 10:00 A.M. Public Sale of Power Farm Machinery, Antiques, Household Goods, Misc. Tools & Etc. Held at the farm, 4 miles NW of Oxford, PA, turn off Pine St., Bellbank, 9 Points Rd., east on Jackson School Rd., 1st farm left after high tension line. Lower Oxford Twp., 26 miles south of Lancaster. W. Fred & Mildred E. Earhart Owners. Whiteside Auction Service.

SAT NOV 15 10:00 A.M. Public Sale of Personal Property Located 3 miles south of Bowmansville, take Black Creek Rd., west off Rt. 625, turn right on Center Church Rd. to sale. Terms by Katie M. Weaver Elton and Alvin Horning Auctioneers.

SAT NOV 15 9:00 A.M. Large Public Sale of 72 Acre Farm Tractors, Farm Machinery, Gas Engine, Tools, Corn, Straw, Antiques, Household, Guns. Located taking US Rt. 30 east of New Oxford, Pa. turn left (toward Hampton) onto Rt. 94, at Cross Keys, continue 1/4 mile turn right onto Pine Run Rd., continue 1/4 mile, turn left onto Mill Rd., Continue straight 6 miles to sale. Mrs. Gerald Krepps Owner. C. David Redding Auctioneer.

SAT NOV 15 9:30 A.M. Public Sale of Valuable Farm Machinery, Antiques, Household and Misc. Located approx 1 1/2 miles west of Dover on S. Salem Church Rd., between the Admire and Davidsburg Rd. Mr. Ralph Stine Owner. John Kline Auctioneer.

SAT NOV 15 12:30 p.m. Dairy Cow Sale including 2 Load of Cattle out of New England States to be held at Smoketown Quality Dairy Sales Co., 5 miles East of Lancaster 5 miles West of Intercourse Pa. Route 340 Sale by Gordon W. Fritz.

SUN NOV 16 1:00 P.M. Public Sale of Real Estate Located in Clinton Co., PA. Approx 15 miles from Lock Haven, toward Renovo on Rt. 120, watch for signs. Bob, Chuck and Rich Roan Inc. Auctioneers.

Loyd Brightbill PUBLIC SALE

12 Acre Farm, Chevrolet Car, Household Goods & Antiques
SATURDAY, NOVEMBER 22

At the East End in the Village of Greble, Lebanon Co., Pa.

12 acre more or less has 2½ story brick house. First floor has 3 rooms and bath. Second floor has 3 bedrooms and bath, attic, cemented basement, oil hot water heat. 2 story brick summer house, wash house. Bank barn, 2 car garage, chicken house, shade trees. Frontage along 2 black top roads. Buildings in good condition.

Household Goods & Antiques

4 pc. bedroom suite, 3 pc. oak bedroom suite, oak round table, wood chest, 2 blanket chests, 6 plank seat chairs, rocking chair, elec. stove, refrigerator, freezer chest, iron kettle, automatic washer & dryer, flat top desk, square extension table side board, 2 benches, Heatrola, china cabinets, picture frames, Rayo light, oil light, clothes tree, crocks, 1966 Chevrolet Belair, has 44,000 miles, riding mower, picnic table, power lawn mower, 2 wheel barrows, air compressor, milk cans, rototiller hog trough, garden and carpenter tools, and lots of items not mentioned.

Lunch on grounds. Sale at 10 A.M. Real Estate at 1 p.m. Cut this add.

Condition By:
LOYD BRIGHTBILL

Steiner & Eby, Attys.
John Breidegam & Joe Hoke, Auct.
Curtis Swope & Ray Deck, Clerks

Public Sales Register

Closing Date - Monday, 5:00 P.M.
of each week's publication

NOVEMBER

SAT NOV 15 9:30 A.M. Public Sale of Real Estate, Household Goods, Antiques, and Farm Equipment. Located Tulpehocken Twp., Berks Co., PA north on Rt. 419 from Rt. 422, approx 6 miles to Four Points Rd., turn left on Four Points Rd., property 6 mile on left. Howard J. Walters Owner. David Risser Auctioneer, Bob Smith Appren Auctioneer.

SAT NOV 15 1:30 P.M. Public Sale of Valuable Real Estate. Located along Winterhill Rd., 1 mile northeast of New Providence off old Rt. 222 10 miles south of Lan-

caster Terms by Steven M. Booth J. Everett Kreider and Steve Petersheim Auctioneers.

SAT NOV 15 Sale of Real Estate, Household Goods & Woodworking Tools Located at 40 N. Grant St., Manheim, Pa. Sale for John Herr Estate. Nevin Z. Martin & Lewis Groff Auctioneers.

SAT NOV 15 9:00 A.M. Public Sale of Real Estate, 2 Mobile Homes, Guns, Truck, Tools, Lumber, Drills, Saws, Etc. Located on Rt. 895 east of Village of Rock, approx 5 miles west off Rt. 183, 5 miles east off Rt. 501 Washington Twp. Schuylkill Co. PA Estate of Clayton Schwartz Jay Riegel Jr. Auctioneer.

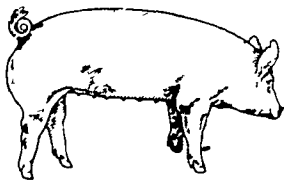
SAT NOV 15 1:00 P.M. Perkins Potato Equipment Dispersal at Ulysses, PA (Potter Co.) Bud Perkins Owner. 814 848-7915. Sale conducted by Pirrung Bros. Wayland, NY and Ulysses, PA. 814 848-7421.

We Would Like To Thank The Buyers Of The Lawrence, Leon & Thomas Arnold 16TH PRODUCTION SALE

Yorkshires

OF

Durocs



Our High Selling Bred Gilts Were Sired by "Explorer"

Lot 76-12 - Sold to Glenn B. Tothoro of Mohnton, PA	\$450
Lot 110-2 - Sold to John M. Cristino of Sauderties, NY	\$450
25 Yorkshire bred gilts	Average \$338.00
9 Duroc bred gilts	Average \$311.66
34 bred gilts	Average \$331.02

Our High Selling Boars Were Sired by "Charlie Hustle"

Lot 39-7 Sold to Charles Masser, of Klingertown, PA	\$625
Lot 45-4 Sold to Theodore Sockaci of Thombell, PA	\$510
26 Yorkshire Boars	Average \$337.88
12 Duroc Boars	Average \$302.50
38 Boars	Average \$326.73

Our High Selling Open Gilts Were Sired by "Barron"

18 Yorkshire open gilts	Average \$242.22
14 Duroc open gilts	Average \$163.57
8 Crossbred open gilts	Average \$180.62
40 Open gilts	Average \$204.87

TOTAL 112 lots \$31,865
Average \$284.51

60 bidders, most pigs stayed in Penna. with some going to Mass. & NY.

**OUR NEXT PRODUCTION SALE WILL BE HELD
FEBRUARY 28**

Consigning 15 bred gilts to PA Farm Show
Sale January 12 & 13

Harry Bachman, Annville, PA, AUCTIONEER

PUBLIC AUCTION VALUABLE COUNTRY FARMETTE SAT., NOV. 29, 1980

AT 2:00 P.M.
7 ACRES M/L

Location: 1463 Newport Road, Lititz. 1 ¼ miles East of Village of Rothsville or 1 ½ miles West of Rt. 222 bypass, and Village of Brownstown; along Rt. 772 Known as Newport Road (Warwick Township, Lancaster County).



The best in rural living for your family with this better than seven acre property consisting of sturdy

2½ STORY FRAME HOUSE

with five rooms on first floor and 4 bedrooms and bath on second floor. Concrete basement, full attic, new furnace, electrical breaker service and new windows. Outbuildings include: bank barn with modern elec. service, first floor concrete with large area insulated, lot of area for hanging tobacco & tobacco cellar, newer metal barn with oil hot water furnace, manure pit and exhaust fan. Detached multi-car garage plus attached garage to house. This property is ideally located within minutes to Lancaster, Lititz, Ephrata, and Route 222 and Route 30 by-pass. Zoning is rural residential; therefore, making this property a very desirable farmette. All 7 acres are usable and would be perfect for truck farming, tobacco raising, etc. Buildings are ideal for many purposes; livestock, horses, and storage. For details, terms, plot of property and inspection by appointment. Call auctioneers (717) 733-1006.

OPEN HOUSE: November 15 and 22 from 1:00 to 4:00.

TERMS BY:

MARVIN & ELIZABETH WEAVER
717-442-8000

SALE CONDUCTED BY:
RANDAL V. KLINE (717) 733-1006
LLOYD H. KREIDER, AUCTIONEERS

**KLINE & KREIDER
AUCTION SERVICE**

Phone (717) 733 1006