

Calf sale to start Berks 4-H fund drive

LEESPORT — A dairy calf sale on Saturday November 22, of over 100 donated heifer calves will be the beginning of the Berks County 4-H's Fund Drive.

The drive, with a \$550,000 goal, is for the erection of two buildings which will be located on the 4-H Community Center grounds on the county farms in Bern Township.

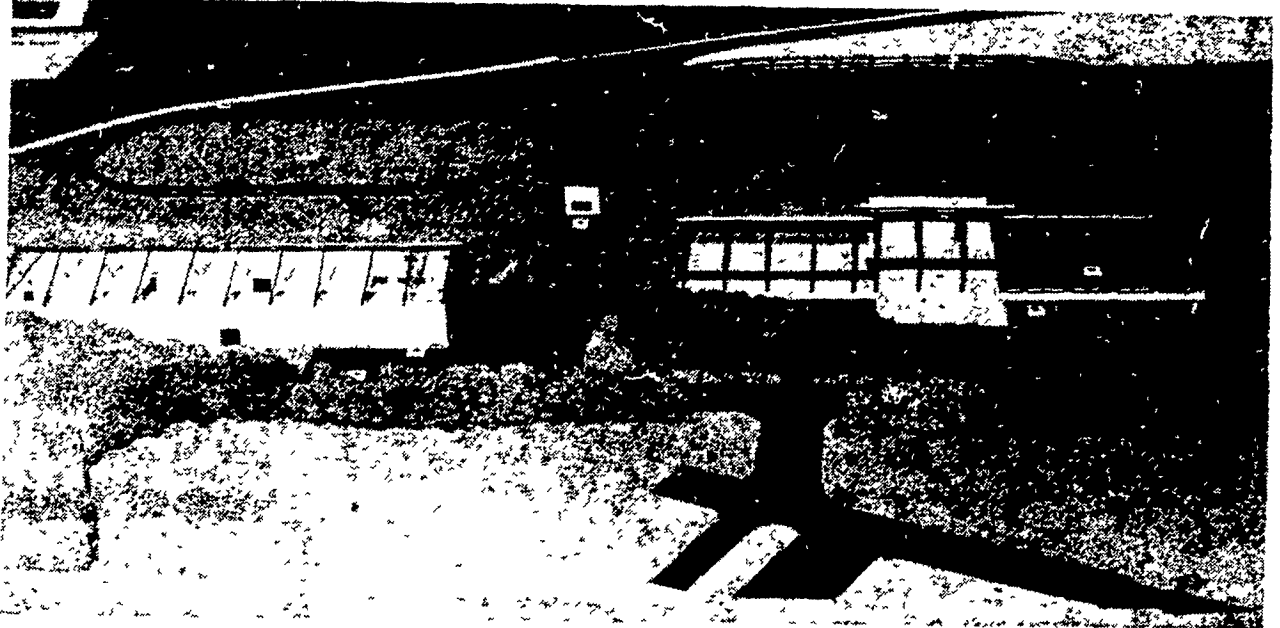
The sale will be held at the Barn of the Fairgrounds Square Mall starting at 11 a.m. All calves have been given by Berks County dairy farmers with all proceeds going to the Building Fund.

In addition over 30 more dairy farmer have donated monies equal to the value of a calf for the dairy farmers part of the drive. Also, A. Doty Remsburg, Auctioneers, Jefferson, Md., will

donate their auctioneering services free of charge.

All interested dairy farmers are invited to come and purchase dairy calves. The calves are from two to eight months of age, ranging from registered to grade animals, of all breeds. A.I. sires include: Persuader, Poverty Hollow Milestone, Glen-Valley Star, Jet Stream, Pabst, and Creek.

Top dams offered include: an Elevation fresh at November 1 with 18,700 pounds of 4.0 percent milk; a VG-84 Capsule Granddaughter with 24,280 pounds milk and 803 fat as a three year old; a VG-86 Leader with 18,700 pounds of 3.9 percent milk; a Harborcrest Smokey with two records over 23,000 pounds and 4.0 percent test; and a number



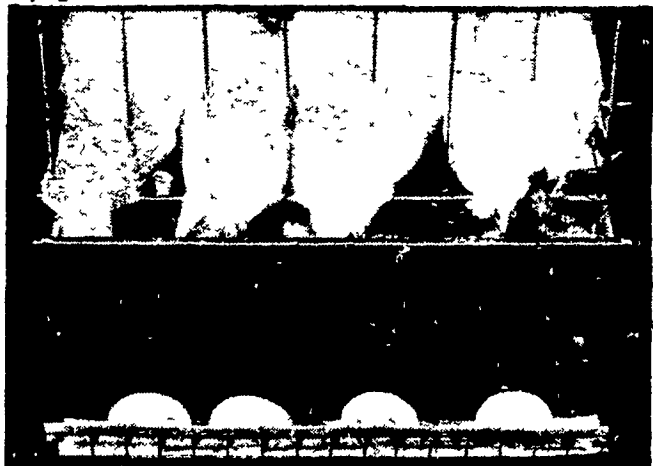
Model of Berks County 4-H Center shows goal of sale - a new facility to go along with the existing

outdoor improvements. Sale is November 22.

PYR CHORE-TIME MID

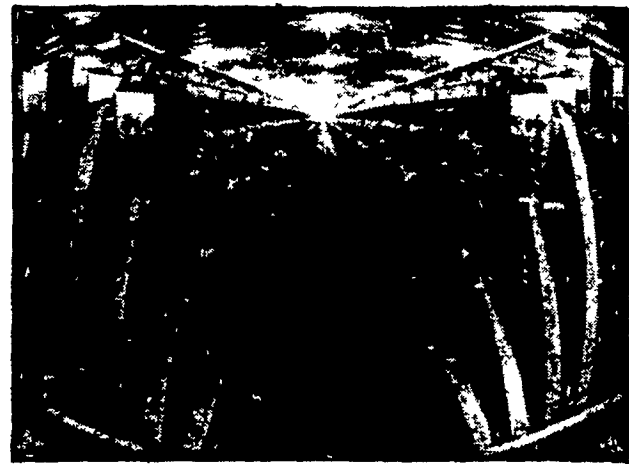
REVERSE CAGE LAYER SYSTEM

★ LESS BIRD STRESS



The system has been designed for bird comfort! Each bird has her place at the feed trough. Each has easy access to water. Obstruction to light and the flow of air have been greatly reduced, providing more uniform ventilation and lighting for every bird. Combined with Chore-Time's automatically controlled air inletting system, you get a layer house environment designed for bird comfort and the resulting better production.

★ MINIMIZES FEED WASTE



Not only the physical shape of the feed trough, but the operation of the feeder has been engineered to reduce feed waste. The trough shape cuts down on feed loss from "raking" and "billing," while the feeder has been specifically designed for Chore-Time's programmed and performance feeding concept.

★ LET US SHOW YOU A REVERSE CAGE SYSTEM IN OPERATION



CATTLE - HOG - POULTRY EQUIPMENT
2754 Creek Hill Rd., Leola, PA 17540
PHONE: 717-656-4151
STORE HOURS: Mon.-Fri. 7:30 to 5:00; Sat. 7:30 to 11:30
SERVING PA, N.J. AND N.Y.

AGRI-EQUIPMENT INC., OFFERS COMPLETE
• SALES
• INSTALLATION
• SERVICE

of grade dams over 20,000 pounds.

The fund drive which has been approved by the Berks County Capital Campaign Review Board will run until June, 1981.

Ezekiel Ketchum, Campaign, Chairman, stated he was extremely happy with the great support given by the dairy farmers of the county.

"A big first step," Ketchum said, "This will go a long way in gaining the support for the project from businesses and individuals in Berks County."

Other activities planned for the drive, are soliciting

for support from the 4-H families, agri-business and Berks and Reading Businesses.

4-H also plans a hoedown and modern dance at the Hamburg Field House on November 29, a birdfeed and Christmas wreath sale, a craft sale in late winter, and an animal sale in the Spring.



"ATTENTION" ALL A.E. STALEY CO. WAXY-CORN CONTRACTS!

We still have plenty of waxy-seed available for the grain farmers and also Waxy Hybrids are great for cattle and hog feeders. In this area they should plant WAXY-MAIZ Hybrid seed-corn. College feeding trials show 10% better gains on 7% less corn with WAXY fed to cattle. We have several WAXY-MAIZ Hybrids for this area. They yield the same as yellow dent corn, but have higher energy starch. Hogs gain better and get to market faster on WAXY-MAIZ. We can show you how to boost cattle and hog feeding profits.

Contact:

D. RICHARD SNYDER
Rt #1, Montoursville, PA 17754
717-433-3580

GENE HAAS
District Sales Supervisor
4911 Bradley-Brownlee Rd.
Farmdale, Ohio 44417
Phone 216/637-0749 or 638-5023
Or Any Of Our Dealers

Dealer Inquiries Welcomed!



MOEWS SEED COMPANY
Box 214, Granville, Ill. 61326
Phone 815/339-2201