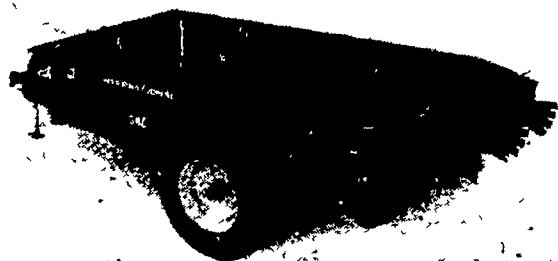


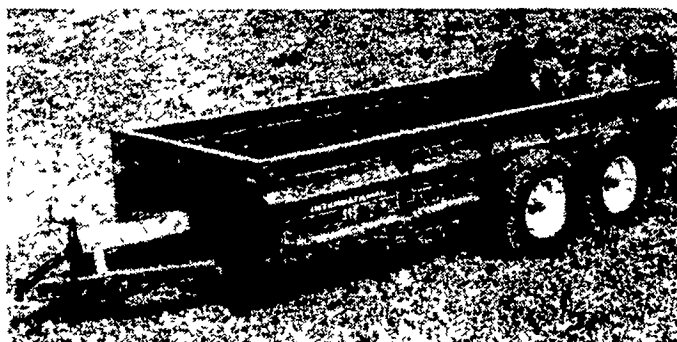
# INTERNATIONAL HARVESTER



## MANURE SPREADERS BUILT BETTER - LASTS LONGER



**MODEL**  
530 - Rated 148 cu. ft.  
540 - Rated 185 cu. ft.  
550 - Rated 216 cu. ft.  
1980 New 560 - Rated 235 cu. ft.

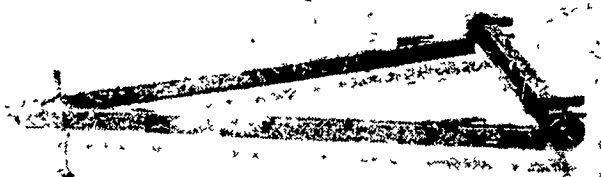


**BIG - 595** is rated at 243 cu. ft. heaped capacity - with upper beater attachment, its 451 cu. ft.  
**LOW - profile** is only 53½ inches  
**MODEL - 575** - Rated 328 cu. ft. with upper beater

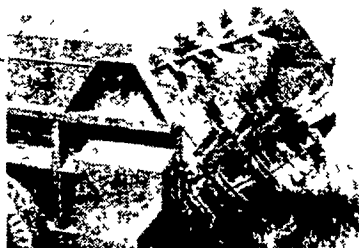
### WAIVER SAVES

EQUIPMENT	BUY NOW OR UP UNTIL:	WE'LL WAIVE FINANCE CHARGES UNTIL:
New & Used IH Manure Spreaders	12/31/80	3/1/81

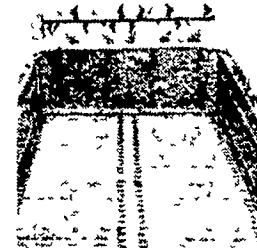
• When financed through International Harvester Credit Corporation for at least 12 months.



**A - FRAME** - Pull of tractor all the way to wheels - No intervening angles or welds to weaken the structure.



**IH BEAR CLAW** for best shredding & spreading paddles are stronger than flat paddles - Bolted to welded mountings on a square shaft for maximum strength.



**LONG LIFE GRAETZ** Apron chain, four strands are standard on 540, 550, 560, 575, & 595 - Also available on 530.

### MAKE YOUR NEXT SPREADER **IH** FOR DEPENDABLE, RELIABLE, LOW MAINTENANCE & \*LIFE-TIME GUARANTEED STEEL SIDES.

\*To the original owner for useful life of the spreader.

#### SEE THESE DEALERS AND SAVE

**CLARENCE WILSON & SONS**  
Kimberton, PA  
215-933-3581

**MECKLEY-DALMATIA**  
Dalmatia, PA  
717-758-3021

**R.S. HOLLINGER & SON**  
Mountville, PA  
717-285-4538

**HERITAGE INTERNATIONAL, INC.**  
1054 S. State St.  
Ephrata, PA  
717-733-2283

**BIGGS INCORPORATED**  
34 Buckley Ave  
Rising Sun, MD  
301-658-5531

**C & W EQUIPMENT, INC.**  
260 York Rd.  
Carlisle, PA 17013  
717-243-4419

**STAMBAUGH INTERNATIONAL INC.**  
New Bloomfield, Pa.  
717-582-2411

**MELVIN J. SHEFFER, INC.**  
121 Railroad Street  
Hanover, PA  
717-637-3808

**HICKORY INTERNATIONAL INC.**  
Route 1 Hickory  
Bel Air, MD  
301-838-4200

**C.B. HOOBER & SON**  
Intercourse, PA  
717-768-8231

**LAMB'S FARM MACHINERY**  
Thorndale, PA  
215-269-2676

**VOUGH & SONS, INC.**  
Bangor, PA  
215-588-5922

**SWOPE & BASHORE, INC.**  
Myerstown RD 1 (Frystown)  
717-933-4138

**MESSICK FARM EQUIP.**  
Rheems Exit Rt. 283  
Elizabethtown, PA  
717-367-1319

**COPE & WEAVER CO.**  
New Providence, PA  
717-786-7351

**M & R EQUIPMENT, INC.**  
New Park, PA  
717-993-2511

**DOMBACH EQUIPMENT, INC.**  
McAlisterville, PA  
717-463-2191

**WM. HOBENSACK'S SONS**  
1060 Greeley Ave.  
Ivyland, PA  
215-675-1610  
215-343-2101

**ERB & HENRY EQUIP., INC.**  
22-26 Henry Ave.  
New Berlinville, PA  
1 Mile North of Boyertown  
215-367-2169

**L.L. ECKROTH FARM EQUIP., INC.**  
RD 2, New Ringgold, PA  
717-943-2367

**LEHIGH INTERNATIONAL, INC.**  
12 Oak Wood Lane  
Schnecksville, PA 18078  
215-767-1188

