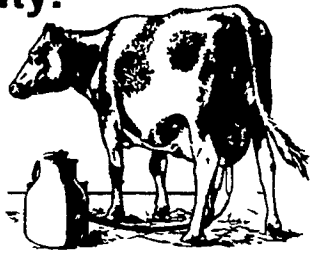
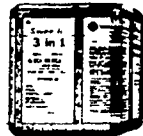


Feed Sweetlix[®] 3-in-1[™] Blocks and keep your cows milking at full capacity.

Sweetlix 3 in-1 Blocks are the most efficient way to give your cows extra salt mineral and energy they need to milk at full capacity. High producing cows need more mineral than they get in a normal ration. They often won't eat enough loose mineral or hard mineral blocks because of the bad taste. But cows like Sweetlix 3-in-1 because of the good-tasting molasses. Consequently they eat the right amount each day to insure the proper intake of these supplemental nutrients needed to keep them producing at the highest levels year around.



Staley Sweetlix 3-in-1 Blocks
We've got 'em!

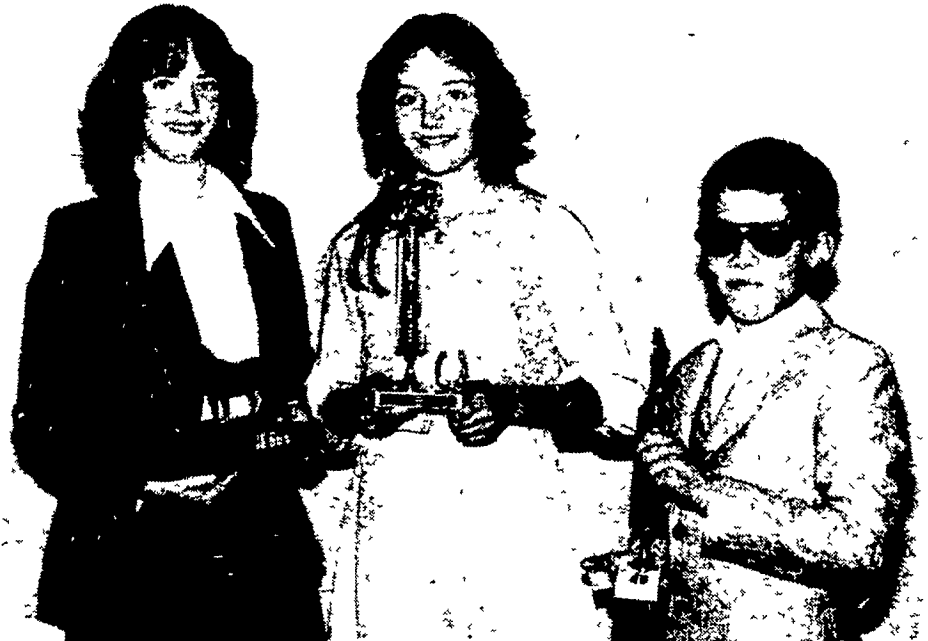


Ask Your Local Farm Supplier

Pierce sisters are Lebanon horse showmen

SCHAEFFERSTOWN — Two Lebanon County sisters were awarded the Junior and Senior Grooming and Showmanship honors during Saturday evening's Lebanon County 4-H Horse Clubs Award and Recognition Banquet, held here at the Fire Hall.

Eighteen-year-old Jeanne Pierce of R1 Newmanstown received the top award in Senior Division Grooming and Showmanship, while thirteen-year-old Sheri Pierce received the Junior Division trophy. Both sisters belong to the Spur & Bit Club, under the leadership of Lucille Dohner. They have



Jeanne Pierce, left, of R1 Newmanstown and her sister, Sheri, were recognized on Saturday evening for being Lebanon County's top Senior and Junior 4-H showmen. Todd Leibold, right, of R1 Schaefferstown, was honored for his performance at the recent State 4-H Horse Show.

been members for five years.

The Pierce sisters also received trophies for this past year's performances in Stock Seat Equitation. Jeanne and Sheri were recognized as the top riders in the county in the Senior and Junior divisions, respectively.

Jeanne was a member of the county's 4-H horse judging team which placed tenth in State 4-H Achievement Days competition. Other team members included Carla Ditzler, Equestrians; Margot LeRoy, Hoff & Horns; and Lisa Weikel, Hoff & Horns Coaching the team was Judy LeRoy, leader of the Hoof & Horns Club.

Equitation trophies in the Saddle Seat Division were awarded to Senior rider Jennifer Wunderlich,

Lebanon, of the North Cornwall Trailblazers club, and Junior rider Shelly Brown, Lebanon, also a member of the Trailblazers. Hunter Seat trophies numbered three, and were awarded for performances over jumps and not over jumps. This year's recipients in the Junior and Senior divisions not to jump were Ann Lansberry of the North Cornwall Trailblazers and Ginger Sowers of Hoof & Horns, respectively.

Carla Ditzler, Jonestown, took top honors in the Hunter Seat Over Jumps Division. The Senior rider is a member of the Equestrians club.

Trophies were sponsored by Brandt's Mill and Saddlery Shop, Lebanon, and Hamilton Bank, Richland.

Club members receiving certificates for participating in the District Show included:

Cornwall Trailblazers; Lisa Weikel, Hoof & Horns.

Performance Show
Jon Boyer, North Cornwall Trailblazers, Shelly Brown, North Cornwall

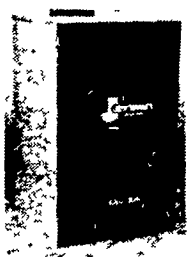
Cornwall Trailblazers, Meagan Burrichter, Hoof & Horns; Robin Clark, Equestrians; Carla Ditzler, Equestrians; Dawn Dohner, Hoof & Horns; Murray Lynn Frazier, Saddle Slappers; Jennifer Hartman, Saddle Slappers, Sharon Henney, Spur & Bit; Brian Jurell, Hoof & Horns, Mel Keller, Hoof & Horns; Ann Lansberry, Spur & Bit; Kris Lehn, Hoof & Horns; Todd Leibold, Spur & Bit; Marta Lipensky, North Cornwall Trailblazers, Melanie Kipensky, North Cornwall Trailblazers; Brenda Miller, Spur & Bit; Robin Moulton, Equestrians, Stacy Peters, Spur & Bit, Jeanne Pierce, Spur & Bit; Sheri Pierce, Spur & Bit, Carolyn Rabold, Spur & Bit; Holly Reyner, Palm Trailblazers; Hope Reyner, Palm Trailblazers; Kathy Roberts, North Cornwall Trailblazers; Charly Saam, Equestrians; Sharon Saam, Equestrians; Robert Shindel, Saddle

(Turn to Page C24)

COAL AND WOOD FIREPLACE INSERTS

SPECIAL SALE • **Glacier Bay** - Reg. \$869.00
NOW **\$769⁰⁰**

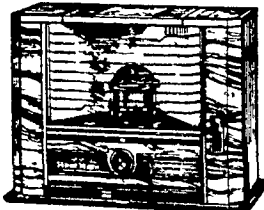
• **Blue Ridge** - SPECIAL PRICE **\$657⁰⁰**
Blower Included
(You've Got To See This One To Believe It)



JENSEN
COAL AND WOOD
ADD-ON FOR
AIR AND WATER
Call Us For Our
Special Prices
On These
Solid Fuel Units

HEAT MATE
KEROSENE HEATER

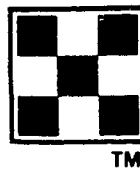
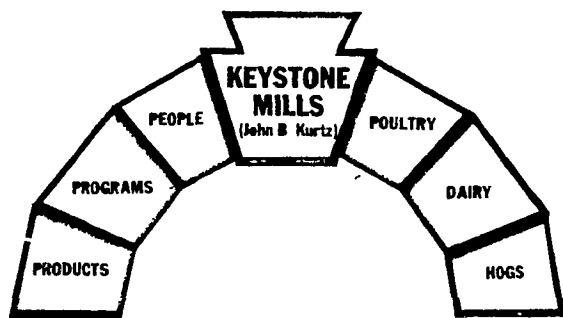
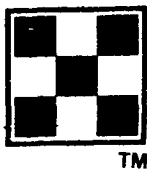
\$159⁰⁰



10,000 BTU

LEOLA FIREPLACE & STOVE SHOP

93 W. Main St., Leola
717-656-6408
Mon - Fri 10-8, Sat. 9-6

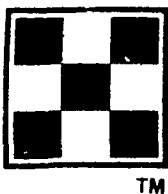


BEST VALUE + HIGH ENERGY

		CASH PRICE
KEYSTONE	14% FLAKE . .	\$ 9.80
KEYSTONE	16% FLAKE . .	\$ 10.19
KEYSTONE	18% FLAKE . .	\$ 10.77

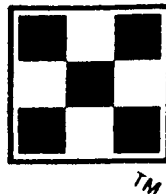
* ROUGHAGE TESTING

* DAIRY FEEDING PROGRAM



KEYSTONE MILLS

(John B. Kurtz)
RD #3 Ephrata, PA
717-354-4616 717-738-1088



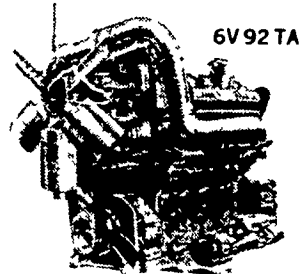
DANIEL'S ENGINE CONTROL



Detroit Diesel
Engine



Two Cylinder
Model D 327 2
20 to 36 5 HP Max



New Murphy Diesels
1 - Thru 6 cylinder
6 thru 112 H.P.
air or water cooled

Used & Rebuilt Detroit
Diesels • Engines &
Power Units • Special-
izing in GM & Detroit
Diesel, Tune-Up &
Rebuilding

Twin-Disc Clutches Available

DANIEL E. STAUFFER

R D. 3, Ephrata, Pa. 17522
Rt. 322, Hinkletown
Ph. 717-733-3890