

PUBLIC AUCTION
VALUABLE COUNTRY FARMETTE
SAT., NOV. 29, 1980

AT 2:00 P.M.
 7 ACRES M/L

Location: 1463 Newport Road, Lititz. 1 1/4 miles East of Village of Rothsville or 1 1/2 miles West of Rt. 222 bypass, and Village of Brownstown; along Rt. 772 Known as Newport Road (Warwick Township, Lancaster County).



The best in rural living for your family with this better than seven acre property consisting of sturdy

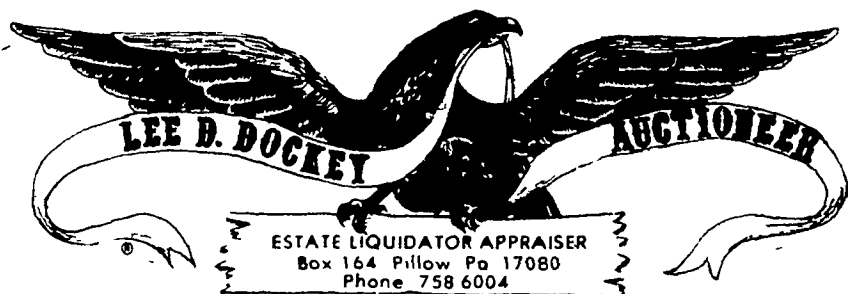
2 1/2 STORY FRAME HOUSE

with five rooms on first floor and 4 bedrooms and bath on second floor. Concrete basement, full attic, new furnace, electrical breaker service and new windows. Outbuildings include: bank barn with modern elec. service, first floor concrete with large area insulated, lot of area for hanging tobacco & tobacco cellar, newer metal barn with oil hot water furnace, manure pit and exhaust fan. Detached multi-car garage plus attached garage to house. This property is ideally located within minutes to Lancaster, Lititz, Ephrata, and Route 222 and Route 30 by-pass. Zoning is rural residential; therefore, making this property a very desirable farmette. All 7 acres are usable and would be perfect for truck farming, tobacco raising, etc. Buildings are ideal for many purposes; livestock, horses, and storage. For details, terms, plot of property and inspection by appointment. Call auctioneers (717) 733-1006.

OPEN HOUSE: November 15 and 22 from 1:00 to 4:00.

TERMS BY:
MARVIN & ELIZABETH WEAVER
 717-442-8000

SALE CONDUCTED BY:
RANDAL V. KLINE (717) 733-1006
LLOYD H. KREIDER, AUCTIONEERS



PUBLIC SALE
SATURDAY, NOVEMBER 22, 1980
1:00 P.M.

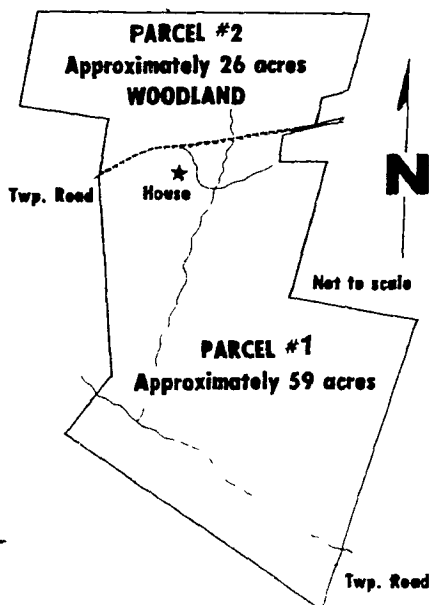
LOCATED 4 MILES EAST OF PILLOW, PENNSYLVANIA AND ROUTE 225. WATCH FOR SALE SIGNS ALONG THE PILLOW TO KLINGERSTOWN HIGHWAY.
85 - ACRE FARM

PARCEL #1: consists of approximately 59 acres, having a frontage on the north by hardtop Township Road #327. And having thereon constructed a 2 1/2-Story Mountain Stone Dwelling with 6 Rooms and Bath and heated with an Oil Hot Water Furnace, Assorted Outbuildings. Within the last two year, the owner has drilled a new well and has installed a new septic system

PARCEL #2: WOODLAND consisting of approximately 26 acres, fronted on the south by hardtop Township Road #327.

NOTE: Parcels #1 and #2 will be offered for sale separately and as a complete unit Parcel #1 has an approximate 50% tillable acreage If you're looking for country living, this may be the farm for you For additional information or inspection of property, phone (717) 758-6004

TERMS: 10% Down Further terms and conditions to be given the day of sale



DONEGAL PRODUCERS, OWNERS

SHREINER & PATTERSON, ATTORNEYS AT LAW
 LARRY PATTERSON, ATTORNEY
 DOCKEY & DOCKEY, AUCTIONEERS
 DEPPEN, APPRENTICE



Public Sales Register

Closing Date - Monday, 5:00 P.M.
 of each week's publication

SAT NOV 15 9 A.M. Public Auction of Valuable Real Estate and Personal Property Located 5 miles northeast of Bedford, Pa Bedford Co 4 miles east of Bedford turnpike interchange at the late John A Dively farm Stanley Claycomb and Linda Muir, Auctioneers

SAT NOV 15 2 00 P.M. Public Sale of Real Estate, Antiques, Tools, held at 523 West Washington Ave., just west of Laysers Flowers, Myerstown, Jackson Twp., Lebanon Co., PA Conditions by Mabel F and Alvin K Haak Sr G Harvey Weik Auctioneer

SAT NOV 15 Public Sale of Antiques, Glass, China, Etc Held in Adamstown Fire Hall, Adamstown, PA H H Leid Auction Service

SAT NOV 15 - 9 30 A.M. Complete Liquidation Smith's Modern A Quality Dairy located in Lebanon Co between Palmyra and Mt Gretna, just off Rt 117 from Rt 422

take Rt 117 1/2 miles to Beech Rd, turn left on Beech Rd, go to dirt road to sale site Smith's Dairy Inc Owners Kerry A Pae Auctioneer

SAT NOV 15 9 30 A.M. Public Sale of Antiques Garden Equipment, Household Items Located Rd 24, York, PA (1 mile east of Hellam, along old Rt 30 Estate of Allen Gromling Blaine N Rentzel Auctioneer

SAT NOV 15 - 10 00 A.M. Public Sale of Power Farm Machinery, Antiques, Household Goods, Misc Tools & Etc Held at the farm, 4 miles NW of Oxford, PA, turn off Pine St., Bellbank, 9 Points Rd., east on Jackson School Rd., 1st farm left after high tension line Lower Oxford Twp., 26 miles south of Lancaster W Fred & Mildred E Earhart Owners Whiteside Auction Service

SAT NOV 15 10 00 A.M. Public Sale of Personal Property Located 3 miles south of

Bowmansville, take Black Creek Rd west off Rt 625, turn right on Center Church Rd to sale Terms by Katie M Weaver Elton and Alvin Horn ing Auctioneers

SAT NOV 15 - 9 00 A.M. Large Public Sale of 72 Acre Farm, Tractors, Farm Machinery, Gas Engine, Tools, Corn, Straw, Antiques, Household, Guns Located taking US Rt 30 east of New Oxford, Pa turn left (toward Hampton) onto Rt 94, at Cross Keys, continue 1/4 mile turn right onto Pine Run Rd, continue 1/4 mile, turn left onto Mill Rd, Continue straight 6 mile to sale Mrs Gerald Krepps Owner C David Redding Auctioneer

SAT NOV 15 9 30 A.M. Public Sale of Valuable Farm Machinery, Antiques, Household and Misc Located approx 1 1/2 miles west of Dover on S Salem Church Rd, between the Admire and Davidsburg Rd Mr Ralph Stine Owner John Kline Auctioneer

SAT NOV 15 - 12 30 p.m. Dairy Cow Sale Including 2 Load of Cattle out of New England States to be held at Smoketown Quality Dairy Sales Co., 5 miles East of Lancaster, 5 miles West of Intercourse, Pa Route 340 Sale by Gordon W Fritz

PUBLIC AUCTION
OF FARM MACHINERY, TRUCKS,
OFFICE EQUIPMENT, SHOP TOOLS & EQUIPMENT
TO DISSOLVE PARTNERSHIP

SATURDAY, NOVEMBER 15, 1980

10:30 A.M.

Location- 1180 Enterprise Road, East Petersburg, Pa., Lancaster Co.
FARM MACHINERY

MM Mohne tractor G1000 Diesel, excellent condition, guaranteed 100%; 3010 John Deere Diesel Tractor; 1740 Case Diesel Tractor, 1530B Case skid steer loader; 1978 Fox 6250 Forage Harvester w/4 wheel drive, 2 row wide corn head, 3 row narrow corn head and hay head; (2) Fox Super D's w/cab; (2) 2-row wide corn heads; 3 row narrow corn head; direct cut head; (2) hay heads; 702 NI w/760 chopper diesel engine; (2) 2-row corn heads; 3 row snapper head; direct cut head; 1 hay head, also many other parts for New Idea harvesters; (2) new McConnell hydraulic dumping wagons; Hesston 1108 self propelled windrower; Case 8' self propelled windrower; Field Queen 2 row 38 corn head; Hesston slurry agitator; NH 275 baler w/thrower; White 4-row Aire Planter; NH 850 round baler; Michigan pay loader diesel power; 3000 TMC Hydraulic fork life; Hydraulic yard crane w/engine.

TRUCKS AND TRAILERS

1980 Blazer; 1977 Econoline van; 1977 Ford LN 9000 single axle 238 Detroit engine; 1975 Chev. van 14'; 1975 Ford LN 9000 single axle 238 Detroit; 1975 GMC 1/2 ton pickup; 1975 1 ton pickup with utility body; 1975 Dodge D600 12' flatbed with special hitch for gooseneck trailer; 1974 Chev. C60 16' flatbed; 1974 Chev. 20' van; 1974 8' single axle utility w/steel deck; 1974 Jantz 7 1/2 ton 2 axle low boy steel deck; 1975 tag-along 7 ton 5th wheel 3 axle low boy wooden deck; 1975 Denair 27' 5th wheel tandem axle dual wheel tilt bed hydraulic winch with remote gas engine power pack; (4) 11x16 front tires with wheels new; (2) 16x9x26 tires with wheels new; plus other miscellaneous tires.

SHOP EQUIPMENT AND TOOLS

(2) metal parts cabinets; (2) bolt cabinets; (3) metal work benches; 4 1/2" bench vise; 1/2" drill w/bench press; Wilton bench grinder 6"; hydraulic shop press 20 ton; 1/2" Rockwell impact wrench w/sockets; Black and Decker body grinder; hydraulic system testing station; air conditioning service station; electrical system testing station; (10) 16 lb. sledge hammers; 3/4" drive socket set; Model F90 Sandy Jet abrasive blaster; NAPA battery charger; 141-31 battery charger; high pressure washer; heavy steel welding table; Lincoln welder; 20 gal. portable air tank; portable welder gas engine; acetylene and oxygen welder; cutting torch outfit with cart; hydraulic portable crane; (3) 6" C clamps; 12" C clamp; (2) welding clamps; (2) heavy duty jack stands; (2) transmission oil pumps; (3) hand grease guns; (2) bolt cutters; (1) high speed hand grinder; taping machine; (4) heavy duty parts racks 3'x9'x10'; parts wrapping table; heavy wood work bench; 48" rigid pipe wrench; Echo weed trimmer; 1/2" air impact wrench; parts banding machine; (6) 25"x48"x84" parts shelves; 18"x84"x15" parts bin; (2) 18"x84"x12" parts bins; 36"x84"x12" double side parts bin; (2) 36"x72"x7" double side parts bin; (2) 8"x48"x48" wall mount parts bin; (2) 30 gallon auxiliary fuel tanks for pickup trucks; (12) 3/8x10' average length log chains; (12) chain binders; 3 double face display lighted signs with removable panels; 1 single face display sign w/removable panel; large refrigerator.

OFFICE EQUIPMENT

4 metal office desks; wood office desk; 12 various desks; wall organizers; 4 shelf book case; cabinet with doors; (2) 2 shelf book cases, 3 drawer cabinet; 3 drawer metal filing cabinet letter size; (2) 2 drawer metal file cabinets legal size; 4 drawer metal file cabinet legal size; 3 drawer metal file cabinet with safe letter size; typewriter table, utility table, Underwood electric typewriter; IBM electric typewriter; Remington manual typewriter; Sears portable typewriter; Sharp electric calculator; Victor electric adding machine; (3) wire literature racks; 3M 283 copier with stand; Amano time clock; metal plate auto. addresser; Marsh hand taping machine; metal clothes rack; (5) Star chairs; 3 swivel chairs w/arms; (2) armless swivel chairs; (3) upholstered side chairs; (3) Fairchild projectors; Bohn projector, Vacuum cleaner tank type; 4 metal lockers; Hoover 3 cu ft. office refrigerator; Norelco Dial-A-Brew coffee maker.

All equipment to be sold mechanically sound.
 Terms: Cash or good check day of Sale. Arrangements for financing on larger items must be made before sale date.

All items subject to prior sale.

Sale by
FARMERS EQUIPMENT EXCHANGE, INC.
 717-569-8756 or 717-392-7795

Auctioneers
 Scott Adcock 717-569-3178
 Ken Welsh 717-653-4837

Lunch available on premises