

Livestock market and auction news

Belleville Auction

November 5, 1980

Report Supplied By PDA

CATTLE 170. Compared with last Wednesday's market, slaughter cows \$1.75 to \$3 higher. One Choice slaughter steer at 59.75, few Standard 51.50-54.75. Utility & Commercial slaughter cows 42.60-47.60, fw to 49.60, one at 51.85, Cutters 41.50-44.50, Canner & Low Cutter 38.75-40.75. Few Yield Grade #1 1100-1530 lbs. slaughter bulls 46.10-57.25. Large Frame #2 450-700 lbs. feeder steers 48.50-56.00.

CALVES 116. Bulk of supply returned to the farm. Couple Choice vealers 80.00 and 99.00, few Good 72.00-76.50, Standard & Good 70-95 lbs. 64.00-67.50. Farm calves, holstein bulls 85-120 lbs. 70.00-100.00, few to 104.00; few holstein heifers 80-130 lbs. 100.00-119.00.

HOGS 229. Barrows & gilts 75 cents to \$1 higher. US No. 1-2 210-245 lbs. barrows & gilts 49.25-49.60, one lot 50.00, No. 1-3 200-250 lbs. 47.85-49.00, one lot No. 1-3 180 lbs. at 42.00. US No. 1-3 300-625 lbs. sows 40.50-44.50. Boars 36.00-38.00.

FEEDER PIGS 504. US

No. 1-3 15-20 lbs. feeder pigs 6.00-8.00 per head, No. 1-3 20-35 lbs. 8.00-18.50, No. 1-3 35-50 lbs. 17.00-25.50, Utility 20-30 lbs. 6.00-7.50 per head.

SHEEP 35. Few Low Good 70-80 lbs. woolled slaughter lambs 52.00-57.50. Slaughter ewes 16.00-30.00.

HOLSTEIN DAIRY COWS \$775.00-\$1475.00, few to \$1725.00.

Belknap Auction

November 5, 1980

Report Supplied By PDA

CATTLE 117. Standard slaughter steers 52.00-57.00. Few Standard slaughter heifers 49.50-52.50. Utility & Commercial slaughter cows 43.00-46.00, few 47.25-49.25, Commercial No. 4-5 35.00-42.25, Cutters 41.00-44.50, Canner & Low Cutter 36.50-41.25, Shells down to 25.50. One Good slaughter bullock at 57.75. Few Yield Grade #1 1035-1635 lbs. slaughter bulls 50.00-56.00; few yield grade #2 980-1465 lbs. 44.00-48.50. Few Medium #1 320-510 lbs. feeder steers 59.50-69.50, few Large Farm #2 445-750 lbs. 48.00-54.75. Medium Frame #1 305-510 lbs. feeder heifers 44.50-52.00, 580-750 lbs. 43.00-48.00, lot large Frame #1 290 lbs. at 61.00;

few Medium Frame #1 475-600 lbs. feeder bulls 50.00-57.50.

CALVES 104. Few Good vealers 82.00-91.00, few Standard 65.00-73.00, Standard & Good 90-120 lbs. 65.00-82.00, 65-85 lbs. 53.00-67.00.

HOGS 390. US No. 1-2 210-240 lbs. barrows & gilts 48.50-49.00, No. 1-3 200-250 lbs. 47.00-48.50, No. 2-3 205-275 lbs. 45.00-47.00, lot 43.50, No. 1-3 185-195 lbs. 43.00-45.50. US No. 1-3 275-485 lbs. sows 38.00-48.50. Boars 30.0-33.00.

FEEDER PIGS 160. US No. 1-3 15-30 lbs. feeder pigs 7.00-14.50 per head, No. 1-3

40-50 lbs. 18.00-27.00 per head.

SHEEP 8. Lot Choice 100 lbs. woolled slaughter lambs at 56.00.

BUTTER & EGGS

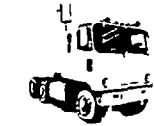
AGWAY

16th ANNIVERSARY ANNUAL MEETING AGWAY INC.

GARDEN SPOT ZONE MONDAY EVENING, NOVEMBER 17, 1980

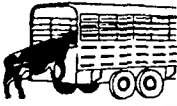
7:30 P.M. FARM & HOME CENTER, LANCASTER, PA.

— DOOR PRIZES & REFRESHMENTS —



HAULING NATIONWIDE

Ray R Harbold
Rd 1 Box 95
Hershey, PA 17033
PH 717-964-2248
or 717-569-2061



THE NEWS IS SPREADING LIKE FIRE!

Migro Hybrids are rolling out high yields all across the corn belt and the news is traveling like a brush fire - so fast in fact, that we're now one of America's fastest growing seed companies...backed by research; respected by performance and winning enthusiastic acceptance from top farmers everywhere.

That's why we're proud to offer you a great line of high yielding corn hybrids for your area.

You'll be planting genetically superior seed backed by one of America's most extensive seed research programs - research conducted by North American Plant Breeders (NAPB).

Some of our highly recommended numbers are:

MIGRO M-2022X - This superb hybrid combines good stalk quality, excellent ear retention and good emergence for top yields year after year. Maturity range: 106-108 days. Adapted to wide range of soil types.

MIGRO HP-360 - (new) - **Fights drought stress.** Short statured hybrid with girthy-ear, has good root system and excellent stalk quality. Maturity 106-108 days.

MIGRO M-0707 - **A yield champion.** This girthy-eared full season 121-123 day hybrid is winning enthusiastic acceptance from corn growers throughout Southeastern PA and Maryland. What's more, M-0707 offers excellent root strength and stalk quality along with disease tolerance to both northern and southern corn leaf blight as well as anthracnose.

MIGRO M-6666 - **Disease protection plus.** This very popular full season hybrid has shown a high degree of disease resistance. Excellent standability and rugged enough to resist anthracnose and many other diseases - healthy right thru harvest. Offers a good root system and excellent ear retention capabilities.

MIGRO HP-470 - (new) **Top yields - fast dry down.** Introducing the high yielding hybrid that gets you rollin early. New HP-470 is a mid season 111-113 day hybrid that offers the best of both worlds to corn growers - top yields and fast dry down. Features good emergence and strong stalks and roots for a healthy jump on yields.

P. L. ROHRER & BRO., INC.

SMOKETOWN, PA

PH: 717-299-2571

The Home of SOLO Products

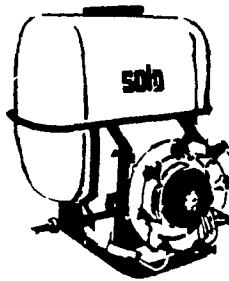


AIR BLAST SPRAYER KEY FEATURES:

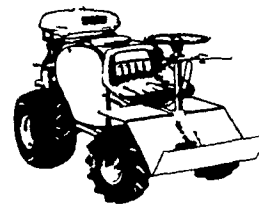
SOLO'S New Floating Pump 830

The new SOLO 830 is ideal for farmers For "clean" water supply, out of even shallow ponds for spray solutions (preventing spray nozzles from clogging by sand, mud or other particles picked up by common pumps) irrigation watering livestock, draining flooded or low areas from standing water, insect and mosquito control pumping liquid fertilizers

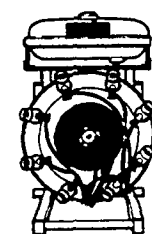
- 55 gallon poly tank
- 12 1/2 HP (210 c.c.) gas engine
- 8 nozzle adjustable discharge 200 mph velocity
- Calibration from 1 quart to 40 gal per acre
- Up to 40 ft swath width for crops
- Up to 40 ft height with Teleblast
- Mounts on 3 pt hitch or skids into pick up truck



Model 451/452
PTO Mist Blower
lightweight, 3 pt hitch to 15 hp or over tractor, 53, 80, 105 gal formula tank



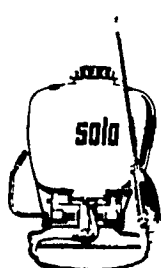
Model 426 self propelled Mist Blower
32-gal formula tank 12.5 hp high performance engine standard cleat or ATV tires



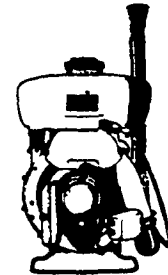
TRAC-419 Mist Blower
self contained module mountable on truck bed, trailer jeep small tractor, 12.5 hp engine, adaptable to any size formula tank



HANJET-455
Superlightweight manual sprayer injection-molded inert corrosion-proof plastic interchangeable inter-nozzles (optional) applies 1.3 gal with single pressurization



JETPAK-425
Manual knapsack sprayer 4 gal capacity, inert high impact plastic nozzle options for spot treatment crack/crevice work



JUNIOR 410/PORT 423
Portable engine powered mist blowers, high impact inert plastic over metal frame support easy start SOLO engine 3 or 5 hp

Lancaster County's Only Dealer Specializing in Sprayer Sales & Service

LESTER A. SINGER

RONKS, PA

PH: (717) 687-6712, Evenings & Saturdays (717) 687-7116