

REAL ESTATE

**23 ACRE FARM**

Beautifully remodeled 3 bedroom Cape Cod home with formal dining room, living room with fireplace, very modern kitchen, 2 baths, modern heating system, new wiring, etc. 2 story bank barn trimmed in blue, pole barn, 2 spring houses, smokehouse, pond. Set up for steers or heifers with large fenced pasture, holding pen, water at barns, etc. This is a beautiful property with a Hallmark setting. It's priced to sell at \$126,900. 7 miles from I-81. EZ access to Harrisburg, Reading, or Pottsville. Call Jason Rutter at

**DERRY REALTY CO.**  
717-273-9351

Today it takes two...PARTNERS and YOU

**136 ACRE FARM** - located in Northern Dauphin & Southern Northumberland Counties. 36 acres wooded, 100 acres farmland, fronting on never failing stream. Plenty of road frontage, house, barn, warehouse & other outbuildings.



**RONALD W. KRALL REAL ESTATE PARTNERS**

717-866-2131  
ROUTE 422 MYERSTOWN  
BRANCH OFFICE  
QUENTIN RD LEBANON  
717-273-1631  
MEMBER LEBANON CO &  
BERKS CO MULTI LIST  
Each office independently  
owned & operated

**LYCOMING COUNTY**

103 acre, 38 stanchion dairy farm, barn cleaner, 600 gal. bulk tank, 44x48 loafing area, financing available at 9% interest.

**DAUPHIN COUNTY**

58 acre dairy, space for 30 cows, 3 silos & equipment buildings, loafing area or steer stable. 30 acres more can be leased. Financing at 9%.

**CLINTON COUNTY**

140 acres, \$700 per acre.

**NORTHUMBERLAND COUNTY**

Dewart. 97 acres, river bottom soil, 56 stanchion dairy.

**COLUMBIA COUNTY**

70 acres, general, 52 acres tillable.

**DONALD R. WITWER REAL ESTATE**  
Ephrata, Pa. - Office  
717-733-4138 or  
215-287-7963

REAL ESTATE

**JUNIATA CO.**

72 acre general farm suitable for steers or hogs. Log house containing 5 bedrooms, good condition. Barn, corn barn & silo, \$85,900

**LEBANON CO.**

57 acres level land, no buildings, suitable for farming or development, Jonestown area.

**CUMBERLAND CO.**

100 acre general farm, suitable for steers or hogs, large bank barn and house both in very good condition. Call today for information.

**LEOLA REALTY REALTORS**

127 W. Main St., Leola, Pa.  
717-656-2281

REAL ESTATE

**FARMS & LAND**

160 acres, 2 houses, huge bank barn, \$120,000 Huntingdon Co.

510 acres, 3 houses, huge grain facilities \$775,000, Owner financing.

40 acres Martic Twp., Lancaster Co. \$3000 per acre.

46 acres Lancaster Co. \$8000 per acre. Rt. 30 West.

23 acres, 4 bay garage, bank barn, large house, level land, \$92,000.

55 acres, Cumberland Co. \$110,000.

288 unit modern veal calf unit, good opportunity for young man to start.

27 acres, Lanc. Co. near Bird-in-Hand, large stone mill & house, Reduced to \$65,000.

184 acre dairy, 200 free stalls, 4000 gal. milk tank, level land.

93 acre dairy near Elimsport, new house, silo, milk house, \$157,900.

107 acre dairy, Centre Co., along Rt. 45, pipeline milker, \$192,000.

**FARM & HOME REAL ESTATE**  
Smoketown, PA  
717-291-2270

S. Baum Mahlon Oberholtzer  
Carlisle Lancaster  
717-776-3967 717-392-1177

Broker - J. Irvin Denlinger  
717-898-8962

**CENTRAL NEW YORK OFFICE**

**ACCOMODATIONS FOR 156 MILKERS,** 2" pipeline, automatic feeding, harvestore plus 3 Harder silos. 40 free stall heifer barn. 476 acres in top dairy area, 300 tillable Honeyoye soil, neighboring farm available for expansion. Fine 10 room home w/apartment plus tenant house. 100 milkers, 75 young stock, full line of machinery. \$580,000

**43 COW PIPELINE BARN** with cleaner, unloading silo plus 2 others, bunk feeder on 180 acre Otsego Co. dairy. 12 room home has 2 baths. Asks \$121,000

**TWO HOMES** on this Stocked and equipped 160 acre dairy, about 130 open 41 cow barn with transfer system, Patz cleaner, unloader silo Heifer wing. 3 bay shop \$198,000 complete.

**GENTLEMEN'S PICTUREBOOK COLONIAL FARM:** 58 acres mountain meadow & woods Breathtaking alpine view from immaculate colonial home set under lrg maples. Exc. red barn with new shingle roof \$66,000



**WIMPLE REALTORS**

Sloansville, N.Y.  
518-875-6355  
FREE DAIRY, SMALL FARM OR ACREAGE LISTS.

REAL ESTATE

REAL ESTATE



**WALTER B. LAUBACH, SR.**  
REAL ESTATE  
PHONE 275-2491

**FOR SALE DANVILLE AREA**

Farm - 5 miles from Danville, Northumberland Co 300 acres - 250 tillable. Access to additional 900 rental acres. 2 large stone and brick houses - 3 story chicken barn - one regular barn, 38x100 pole barn, 40x44 Husky Building, 30x100 block building. 2 silos with unloader and 82' grain bucket, grain dryers, 4 corn and grain holding bins, large pond and much, much more - \$2200 per acre.

WE HAVE OTHER FARMS IN AND AROUND DANVILLE AREA

**Walter B. Laubach, Sr.**  
Realtor - Danville, Pa. 17821  
Please Call: 717-275-2491,  
717-275-4979, 717-286-9380,  
717-275-3382, 717-437-2227

**SOUTH CENTRAL PENNA. FARMS**

IN CUMBERLAND CO.

**GENERAL**

161 Acres fertile level sandstone soil, 10 room (5 bedrooms) stone and aluminum house. Large living room with fireplace, enclosed porch. Extra large bank barn. Owner financing.

**DAIRY**

131 acres, Hagerstown limestone soil, modern 7 room frame house, 50 tie stalls, pipeline milker, 1500 gal. bulk tank, 100 freestall barn, 3 silos, large implement shed, ready for today's dairyman. 100 acres additional cropland available for lease.

**GENERAL**

86 acres, medium bank barn, wagon shed, poultry house on gently rolling land, 45 acres open, woodland, pond, road frontage and stream. Nice 9 room log and frame house. Priced to sell.

**GENERAL**

75 acre estate setting within minutes of turnpike, I-81 and Rt. 11. Gently rolling land, bank barn, modern 2 story frame house, stream, road frontage, creek frontage.

**GENERAL**

23 acre limestone farm, attractive 2 story 8 room brick house, bank barn, silo and other out buildings with road frontage near I-81 Exit. Immediate possession.

**LANE**

63 acres, fertile limestone soil, all tillable, no buildings.

HUNTINGDON CO.

**GENERAL**

172 acres shaly silt loam, modern 7 room house, barn and other out buildings, nestled in Trough Creek Valley near Raystown Lake.

**DAIRY**

166 acres shaly silt loam, spacious brick rancher with attached office and 2 car garage, bank barn with 12 stanchions, large implement shed, woodland, stream, road frontage, included is 1 room brick school house.

**DAIRY**

136 acres shaly silt loam, 20 tie stalls, 300 gal. bulk tank, bank barn, frame house, stream, road frontage, near Raystown Lake.

**SELLING "YOUR FARM"?**

CALL FOR  
"NO OBLIGATION APPRAISAL"

Farm Representative  
Charles Wenger 717-263-0945

**GEORGE L. EBENER & ASSOCIATES, REALTORS**

139 West High Street  
Carlisle, Pa.  
Phone - 717-243-6195

REAL ESTATE

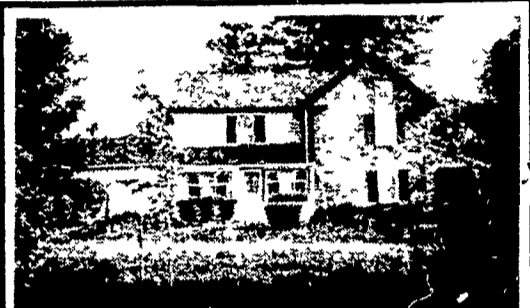
REAL ESTATE

**PENN TWP.**

48 Acre Farm, 40 tillable, 3 wooded. 50,000 broilers, 1000 hog setup, 30x60 heated shop, 20x30 automatic generator shed, 2 corn bins - 12,000 each. Nice 2 1/2 story farmhouse with 4 bedrooms & 2 car garage. Call Today for more information & appointment for personal inspection. Assumable 2nd mortgage at 5% from Farmers Home Administration. ML #42779

**PENN REALTY, INC.**

665-2401 397-8174



**FARMETTE**

Completely renovated stone and frame Colonial. Original old walk-in fireplace, open beams, and new kitchen. Bank barn with box stalls & fenced pasture. A real beauty on seven acres. Only \$119,000.

**COMPLETELY RESTORED**

Old Pennsylvania Farmhouse with new addition on 12 acres. Beautiful oak kitchen, open beams, stone fireplace and two new baths. Original old bake oven and barn with stables. Several acres wooded 6 acres tillable Subdivision possibilities. Tremendous value. \$108,000.



**ROY S. Landis INC**  
TOWN & COUNTRY REALTOR  
Route 313, Dublin, Pa. 18917  
215-249-0400

**HUNTINGDON COUNTY DAIRY FARM** - 176 acres with 125 acres of level farmland in hay & corn. Barn set-up for small herd. Stream on two sides. Comes stocked & equipped.

**LARGE FARM & DEVP. LAND:** 1150 acres near metro area Half wooded, 200 acres mowed Prime development site.

**PRODUCTIVE 200 ACRE DAIRY FARM:** Over 100 tillable, 48 cow barn. Rafter barn, Pipeline, 4-bedroom home. W/WO cows & Equip \$200,000.

**BEDFORD COUNTY DAIRY FARMS** - 138 ac - 120 tillable in hay & corn. Bank barn 46 stanchions - 18x55 silo w/2 yr old unloader - new gutter cleaner - 400 gal. bulk tank. Machine shed-blacksmith shop-wood & wire cribs - 4 bedroom home plus 3 bedroom home. Stream-valuable road frontage. \$169,000.

**160 ACRE DAIRY FARM SET-UP** for small herd - 15 stanchions - bulk tank - wood silo. Hog pen - garage - equip. shed - spring house - large farmhouse. Near 138 acre farm \$225,000

Additional farms & land available. Large & small tracts for farming or development.

THOUSANDS OF CUSTOMERS have contacted United for property. Let's talk about finding a buyer for yours.

**UNITED FARM AGENCY OF PA. INC.**

R.D. #1 Box 395-D  
Roaring Spring, Pa. 16673  
814-224-4464