

FFA chapters receive safety awards

KANSAS CITY, MO. — In recognition of their continuing promotion of safety awareness, 128 chapters of the Future Farmers of America (FFA) will receive outstanding achievement awards as a part of the National FFA Chapter Safety Award Program.

Sponsored jointly by the Farm and Industrial Equipment Institute (FIEI) of Chicago and Dow Chemical U.S.A. of Midland, Michigan, through the National FFA Foundation, the awards will be presented on Wednesday, November 12, at the 1980 National FFA Convention in Kansas City, Missouri.

The top 30 FFA chapters will be presented "Gold Emblem" safety award, the highest award in the program. "Silver Emblem" awards will be presented to another 47 chapters, and 51 chapters will receive the "Bronze Emblem" award.

Farm chemical and machinery safety were two areas often specifically identified by chapters as focal points for their efforts in 1979-80. Many also mounted major efforts in conducting farm safety surveys, promotion of slow-moving vehicle signs, safe corn harvest campaigns and safety instruction programs for elementary school classes.

The FFA Chapter Safety Award is one of three awards recognizing chapter participation in activities of national significance. It is designed to increase awareness of safety practices through classroom instruction and educational activities. Each year accidents on the farm and in the home exact a tragic toll of death, destruction, and mutilation among rural and urban families.

The FFA Safety Program is designed to make students aware of the causes of accidents and motivate FFA Chapters to become actively involved in creating greater awareness of prevention procedures.

All FFA Chapters are eligible to participate in the National FFA Safety Program. Applications for the Chapter Safety Award

are submitted to the State FFA Association which must rank the chapters. Ten percent of the chapters submitting applications ranked as Superior Chapters at the state level are eligible for national competition.

At the national level chapters are rated gold, silver, or bronze, and are presented a gold, silver or bronze spur designating their rank. The spur is to be placed on a plaque presented the first year the chapter earns recognition. The plaque is designed for spurs to be attached over a period of several years.

The FFA has approximately 8,000 local high school chapters in 50 States and Puerto Rico. Judging of the safety award applications in national competition was conducted in Alexandria, Virginia,

under the supervision of the National FFA Organization by representatives of education, government and agricultural business.

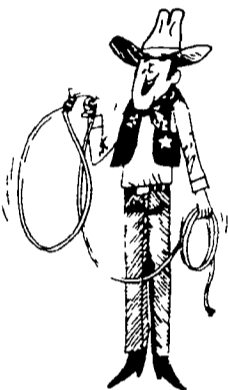
Chapters that earned Safety awards are:

- PENNA
SILVER EMBLEM Curwensville Chapter Curwensville Northern Lebanon Chapter Fredericksburg
- BRONZE EMBLEM Elizabethtown Chapter Elizabethtown
- N.J.
BRONZE EMBLEM Hunterdon Central Chapter Flemington West Essex Chapter West Caldwell
- MD
SILVER EMBLEM Damascus Chapter Damascus BRONZE EMBLEM Clear Springs Chapter Clear Springs

ROPE IN SOME EXTRA CASH!

Advertise With A Lancaster Farming CLASSIFIED AD...

Phone: 717-394-3047 or 717-626-1164



RE-ELECT NOAH W. WENGER Rep. 99th District



- ★ Strong Voice for the Agricultural Community
- ★ Leadership Service Experience

VOTE REPUBLICAN NOVEMBER 4, 1980
NOAH W. WENGER

Paid for by Wenger for General Assy Comm Terry Kaultman Chairman Reid Wissler Treas



If you have fat cattle or need feeders ...

THINK NEW HOLLAND

BEEF SALES

MONDAY - 1:30 P.M.
THURSDAY - 11:00 A.M.

Sale Order - Fat Bulls, Steers, Stockers and Beef Cows
Veal Calves - 4:30 Thurs.

NEW HOLLAND SALES STABLES, INC.

Phone: 717-354-4341

Daily Market Report - Phone: 717-354-7288

Abe Diffenbach, Manager

Field Representatives - Alan Diffenbach 717-456-9806

Luke Eberly 215-267-6008



More muscle for a strong favorite.

ALLIS-CHALMERS 7045. One of the biggest favorites in the Rising Power Family. Now this proven reliability has a new 146-horsepower* of muscle Turbo-charged work power that runs cool with oil-cooled pistons, alternated intake and exhaust valves, big-flow cooling systems, all which add life to the engine. And more. The quiet comfort of Acousta Cab II Standard 20-speed Power Director XX Transmission with 14-speed selections below 10 mph, 8 in the critical 2.5

to 6.5 mph work range. There's independent, dual PTO speeds. Hydraulics that use volume and pressure only when the load demands it. And adjustable front axle. Put time-proven reliability together with new, increased power. Put yourself in an Allis-Chalmers 7045 tractor.

Power Director is an Allis-Chalmers trademark. *Manufacturer's maximum estimated observed PTO horsepower at rated engine speed.

The Rising Power in Farming

ALLIS-CHALMERS

ROY H. BUCH, INC.
Ephrata, RD 2
717-859-2441

L. H. BRUBAKER, INC.
Lancaster, PA
717-397-5179

GRUMELLI FARM SERVICE
Quarryville, PA
717-786-7318

WERTZ GARAGE
Lineboro, MD
301-374-2672

PETERMAN FARM EQUIPMENT, INC.
225 York Road
Carlisle, PA
717-249-5338

BHM FARM EQUIPMENT, INC.
Annaville, RD1, PA
717-867-2211

AGRONOMICS INC.
Box 64, R.D. 2
Factoryville, PA
717-945-3933

SHARTLESVILLE FARM SERVICE
Shartlesville, PA
215-488-1025
H. Daniel Wenger, Prop

C.J. WONSIDLER BROS.
RD1, Quakertown, PA
18951
215-536-1935
215-536-7523

PAUL DOTTERER FARM EQUIPMENT
R.D. 2, Mill Hall, PA
717-728-3471

MECKLEY'S LIMESTONE PRODUCTS INC.
R.D. 1 Herndon, PA
717-758-3915

AG - INDUSTRIAL EQUIPMENT
R2, Rising Sun, MD
301-658-5568

NICHOLS FARM EQUIPMENT
R D 1 Bloomsburg, PA
717-784-7731

C. J. WONSIDLER BROS.
Rt. 309 & 100
R2 New Tripoli, PA
18066
215-767-7611

AIRVILLE FARM SERVICE
Hwy. 74, Airville, PA
717-862-3358

MARSHALL MACHINERY
R D 4, Honesdale, PA
717-729-7117

B. EQUIP., INC.
8422 Wayne Hwy
Waynesboro, PA
717-762-3193

A. J. MOSS & SON, INC.
RD2, Oley, PA
215-987-6257

CANYON IMPLEMENTS, INC.
RD1, Mansfield, PA
717-724-2731