

Cumberland Co. DHIA

(Continued from Page D6)

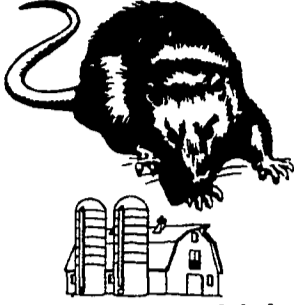
Daisy	5	19,416	40	775
Edna	4	22,340	34	767
Ross H. Holtry				
1	6	19,073	35	660
J. Shephard Wolff				
Bee	6	18,732	36	682
Faith	5	18,214	35	643

Snowbell	6	18,168	39	711
Delight	4	14,993	42	635
Charles L. Nehf				
Dee Dee	4	17,208	38	658
D. T. McCullough, Unit 2				
105	4	14,797	44	647
Frank J. Yost				
Greta	7	17,284	39	678
Her Joy Farms				
Pilot	4	14,243	45	644
Ashcombe Dover Dairy				
218	7	16,991	40	678
243	6	18,029	38	681
257	6	19,324	33	647
351	4	20,221	30	600
R 24	3	20,744	36	747
R 29	3	21,585	32	698
Paul Basehore				
Clara	10	19,462	38	731
Becky	6	21,588	39	852
Patches	5	18,758	38	722
Diane	6	15,789	45	716
Judy	4	19,892	39	783
Leroy Showaker & Son				
Fancy	6	19,480	42	821
Beth	5	13,893	44	611
Carl Kelso, Jr				
86	4	21,029	35	737
Leroy Chestnut				
Ursel	7	20,797	38	788
33	4	15,925	39	628
Chester C. Weaver				
Abby	7	18,571	38	712
Tulip	5	16,985	36	612
Edgey	5	19,012	37	700
Jocky	5	20,527	38	774
Samuel D. Shenk				
Dezi	54	17,885	34	605
Anna	4	18,674	36	666
Robert H. Jamison				
Tammy	5	20,049	32	641
Sandro Farms				
5	4	16,165	38	609
Melvin Sensenig				
Anita	3	18,906	35	671
Oscar Nealy & Sons				
49	7	20,731	36	754
184	5	17,029	40	685
Glenn W. Myers				
Laurie	5	16,088	38	608
Fred & Chris McGillvray				
43	7	20,580	34	704
Wm F. & Susan Dietrich				
Winsome	6	12,859	51	650
Zesta	3	11,990	52	620

Lancaster Farming, Saturday, November 1, 1980-D7

David S. Miller				
Susie	4	19,028	35	669
John F. Stoltzfus				
Jody	2	17,850	43	769
Mervin E. Ruppert				
Pauline	11	18,275	35	637
Sheri	10	19,101	36	687
Allen B. Martin				
44	6	16,746	37	615
Paul B. Sensenig				
Nancy	4	15,567	41	639
Harvey Newswanger				
9	3	17,629	36	626
Francis Mains				
47	2	17,150	40	684
Daniel L. Martin, Jr				
91	7	17,627	44	782
107	6	17,579	35	617
M. Thomas Sheaffer				
Taffy	4	26,214	32	833
Jolene	3	19,488	42	828
Pammie	2	17,986	35	626
Mains Acres				
88	4	18,909	33	633
133	3	17,016	36	621
Nevin Shughart				
Beckie	6	13,642	36	663
Bert	5	23,310	36	836
Peg	6	17,297	39	670
Daisy	2	15,778	38	606

ATTENTION FARMERS... FREE ESTIMATES ON RODENT CONTROL



RODENTS carry diseases which can endanger the health of your flocks. Your business is raising the flocks. Ours is protecting them.

1278 Loop Rd.
Lancaster, Pa. 17604
717-397-3721

Ehrlich

Since 1928
Pest control is too important to trust to anyone else

BREAKING MILK RECORDS!
Lancaster Farming Carries
DHIA Reports Each Month!



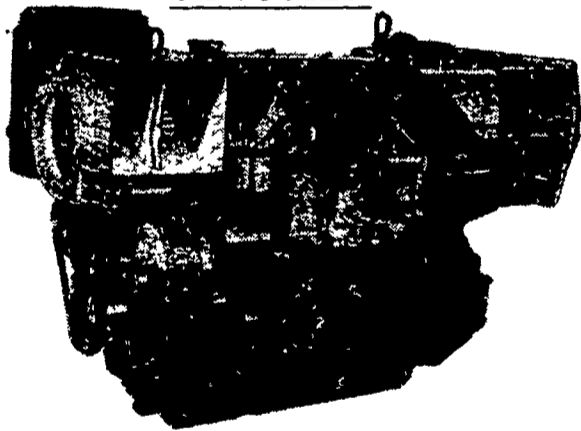
REPOWER With VM DIESEL

Harvesters, Haybines,
Tractors, Cornpickers,
Balers, Hydraulic
Systems, Corn Binders
Choppers

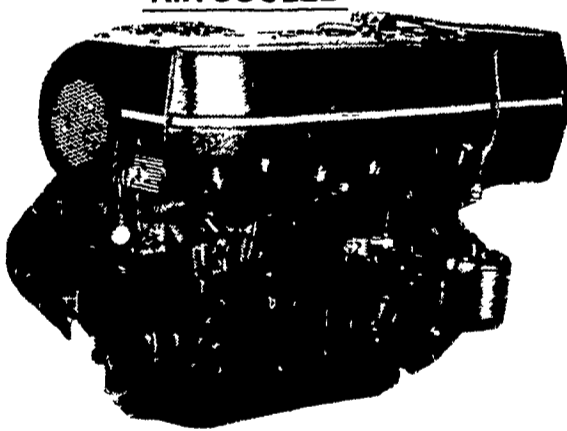


All New HR Series

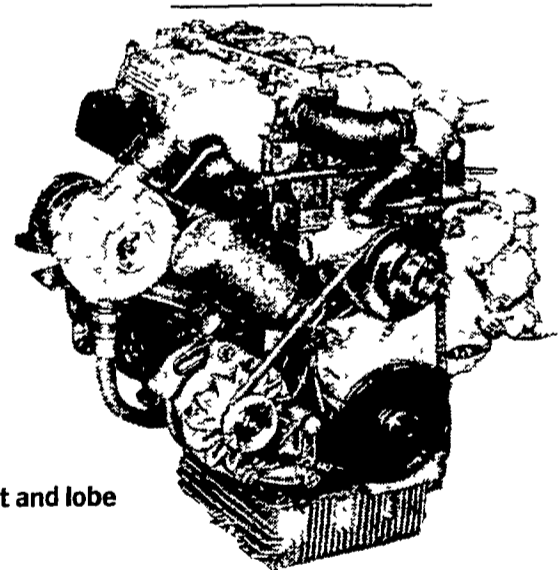
OIL COOLED



AIR COOLED



WATER COOLED



General Features:

- Integrally cast cylinders with inserted and removable wet type cylinder liners
- Light hypereutectic alloy pistons
- Extra-resistant steel connecting rods alloyed with special alloy head bearings
- Surface hardened steel crankshaft
- Drop-forged, casehardened and tempered steel camshaft
- Anti-friction cast-iron tappets alloyed
- Cast-iron tunnel type crankcase
- Rotary injection pump with mechanical governor

- Force-feed lubrication with built-in circuit and lobe type pump
- Diaphragm pump feed
- Oil and fuel filters with integral type element.

Special structure and patented engine with consequent increases in performance and easier operation with low weight/output ratio low smoke emissions.

Engine based on a design "modulus" formula which allows a maximum parts standardization and interchangeability.

USED DIESELS

- SR 2 Lister
- SR 3 Lister
- HRS 6 Lister
- 1 Cylinder Deutz
- DVA 220i **SOLD**

Ask For Horsepower Ranges Of Above
THE "RIGHT FROM THE START" DIESEL ENGINE LINE
FOR FAULTLESS PERFORMANCE

**1051 VM
20 HP**

QUEEN ROAD REFRIGERATION

Box 67, Intercourse, PA 17534
Phone: John D. Weaver - 717-768-9006 or 768-7111
or Answering Service - 717-354-4374

**24 HOUR
SERVICE**