

# State farms benefit from nice fall weather

**SCALES**  
**LIVESTOCK SCALES**  
**For Hog Operations**  
**TRUCK & PLATFORM SCALES ALSO AVAILABLE**  
**GARBER SCALE COMPANY**  
 121 Witmer Rd. Phone  
 Lancaster, Pa. 17602 (717) 393-1708  
 ALL SCALES STATE APPROVED.

HARRISBURG — Pennsylvania farmers continued fall harvest during the week ending October 27 under clear skies. Six days were rated as suitable for farm fieldwork throughout the Commonwealth. Fair, cool and mostly dry weather remained over the state through Friday, with a long awaited rainfall on Saturday. Rainfall from the storm in the southeastern two-thirds of the state was the greatest amount in seven months. Cooler air followed the storm with some snow reported in the northwest

mountains. Temperatures for the week averaged two to eight degrees below normal, the coolest since March. Field activities included harvesting of fruit, potatoes, corn and soybeans; baling hay; seeding wheat; repairing barns and machinery; chopping firewood and other general farm chores. Apple harvest was nearing completion across the state. Potato harvest was also virtually complete, compared to the 94 percent harvested a year ago. Corn for grain was 46

percent manure, and 52 percent harvested. Last year, corn for grain in the Commonwealth was 68 percent mature and 22 percent harvested. A five-year average for grain corn shows 65 percent mature and 28 percent harvested at this time. Soybean harvest passed the 50 percent mark, and stood at 56 percent complete. This compared to the 26 percent harvested at this time last year. Northern counties reported 58 percent harvested, central counties reported 61 percent and

southern counties reported 41 percent harvested. Fourth cutting of alfalfa was 72 percent complete, behind the 83 percent cut last year. The quality of hay made during the week was rated good to fair throughout the state. Feed from pastures was rated below average to average. Pasture in the north was rated 47 percent below average and 53 percent average. Central pastures were rated 88 percent below average and 12 percent average while southern pastures were reported as 71 percent below average and 29 percent average.

Fall plowing is now 93 percent complete across the state, near last year's 94 percent. Completion of fall plowing in the northern and southern areas was rated at 90 percent, while plowing in central areas was rated at 95 percent.

Wheat seedings increased to 94 percent compared to 89 percent planted last year. The north reported 97 percent planted, central areas reported 94 percent, and southern areas reported 91 percent planting.

Pennsylvania soils were rated mostly short to adequate. Northern soil was rated 50 percent short, 39 percent adequate and 11 percent surplus. Central farmers rated soils as 100 percent short, while southern farmers rated their soils as 88 percent short and 12 percent surplus.

All fuels were rated adequate to surplus on Pennsylvania farms.

PENNSYLVANIA AGRICULTURE



WE'RE GROWING BETTER

## GOOD YEAR WINTER TIRE VALUES

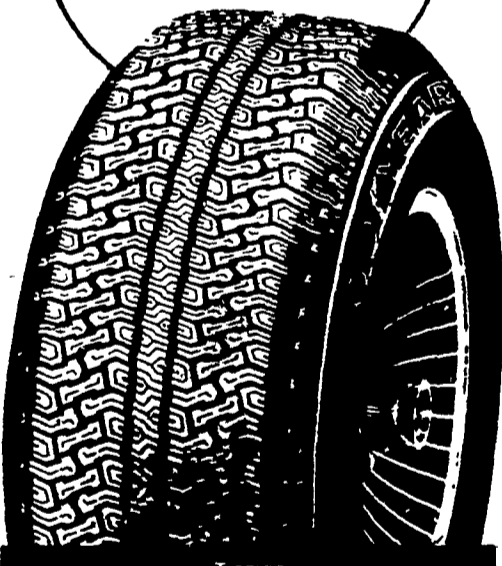
Pick Your Size...Pick Your Price!

### Tiempo

PRICES START AS LOW AS

**\$44**

P155/80R13 BLACKWALL Plus \$1.59 F.E.T.



Tiempo Double steel-belted all season radial

### DIAGONAL PLY

PRICES START AS LOW AS

**\$36**

A78-13 WHITEWALL Plus \$1.75 F.E.T.



Suburbanite Polyester Deep-biting smooth-riding polyester tire

### RADIAL

PRICES START AS LOW AS

**\$57**

155/80R13 WHITEWALL Plus \$1.86 F.E.T.



F-32 All-Winter Radial For winter traction without metal studs

Size	Fits	Blackwall	Whitewall	F.E.T.
155/80R12	-	\$38.00	-	\$1.38
155/80R13	-	\$44.00	\$47.00	\$1.59
165/75R13	-	\$49.00	\$52.00	\$1.68
185/80R13	BR78x13	-	\$57.00	\$2.11
195/75R14	ER78x14	\$63.00	\$66.00	\$2.33
205/75R14	FR78x14	-	\$69.00	\$2.48
225/75R14	HR78x14	-	\$75.00	\$2.81
205/75R15	FR78x15	-	\$71.00	\$2.57
215/75R15	GR78x15	-	\$74.00	\$2.75
225/75R15	HR78x15	-	\$76.00	\$2.93

Size	Blackwall	Whitewall	F.E.T.
A78x13	\$33.25	\$35.95	\$1.75
B78x13	\$40.20	\$43.15	\$1.89
D78x14	\$45.00	\$48.50	\$2.11
E78x14	\$46.70	\$50.25	\$2.33
F78x14	\$48.90	\$52.70	\$2.46
G78x14	\$50.50	\$54.75	\$2.61
H78x14	\$54.40	\$58.40	\$2.87
F78x15	\$50.30	-	\$2.52
G78x15	\$52.55	\$56.40	\$2.68
H78x15	\$55.95	\$60.45	\$2.91

Size	Fits	Whitewall	F.E.T.
155/80R13	-	\$57.00	\$1.86
185/75R13	BR78x13	\$69.00	\$2.03
195/75R14	ER78x14	\$80.00	\$2.54
205/75R14	FR78x14	\$84.00	\$2.72
215/75R14	GR78x14	\$86.00	\$2.87
225/75R14	HR78x14	\$90.00	\$3.02
205/75R15	FR78x15	\$84.00	\$2.78
215/75R15	GR78x15	\$88.00	\$2.93
225/75R15	HR78x15	\$91.00	\$3.08
235/75R15	LR78x15	\$97.00	\$3.33

BUY NOW - FREE MOUNTING

**GOOD YEAR**  
 Out front. Pulling away.

Use any of these 3 ways to buy:  
 • Master Charge • Visa • Cash

**C. E. LUTZ, Inc.**

30 N. MARKET ST., ELIZABETHTOWN, PA

PHONE 367-1438

### COMPLETE FARM PAINTING



We Use Quality PAINT

### AERIAL LADDER EQUIPMENT

- Modern and Efficient Method
- Reasonable Prices
- Spray-On and Brush-In Method
- Sandblasting If Necessary

FOR FREE ESTIMATES WRITE:

### ESH SPRAY PAINTING

(Daniel S. Esh, C. Ralph Miller)  
 SPRAY-ON AND BRUSH-IN PAINTER  
 Box 35CA  
 Ronks, PA 17572  
 or call this number  
 717-687-7007  
 or 717-687-8262  
 INDUSTRIAL COMMERCIAL RESIDENTIAL