

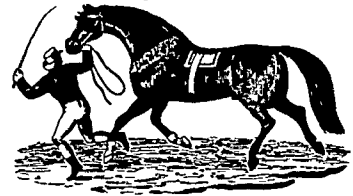


# THE OLD FARMER'S ALMANAC

OCT. 27-NOV. 2, 1980

Rain drives, then sun thrives.

Should have your firewood split by now Swallows leave Capistrano, Calif. this week Last quarter of the moon Oct 30  
Average length of days for the week, 10 hours, 23 minutes  
Statue of Liberty unveiled Oct 28, 1886 Most small animals now in hibernation Stock Market crashed this week in 1929  
A lie has no legs to stand on, but it gets places



hog "Signifies good living"

Home Hints: When candles don't fit your candleholders, run very hot water over the end of the candle to soften it and then press in the holder

## OLD FARMER'S WEATHER FORECASTS

**New England:** Rain, heavy coast, then clear and seasonal midweek, weekend is rainy and mild

**Greater New York-New Jersey:** Week starts rainy and cold, then sunny and cool, end of week brings rain south, heavier rain coast

**Middle Atlantic Coastal:** Clear and cold then rainy and seasonal temperatures midweek, heavy rain, cooler for weekend

**Piedmont & Southeast Coastal:** Week starts very cold with frost, then rainy and cool, by week's end, cloudy and cool, possible showers

(All Rights Reserved Yankee Inc Dublin N.H. 03444)

## Lancaster Feeder Cattle

Friday, October 17

Report supplied by USDA

Today 727  
Last Friday 374  
Last Year 716

**TREND:** Compared to last week feeder steers 1.00-2.00 lower; feeder heifers steady; few lots feeder bulls fully steady. Supply included 300 in graded sale; few lots of five to nine head with balance mainly in lots of four or less.

**FEEDER STEERS**  
MEDIUM FRAME 1: One lot 515 lbs. 72.50; couple lots 600-610 lbs. 69.75-70.25; 800-930 lbs. 66.50-68.75.

LARGE FRAME 1: One lot 955 lbs. 67.00.

MEDIUM AND LARGE FRAME 1: One lot 808 lbs. 67.25; couple lots 962-986 lbs. 64.50-64.85.

SMALL FRAME 1: One lot 598 lbs. 68.75.

MEDIUM FRAME 1-2: 510-620 lbs. 70.25-70.50; couple lots 720-800 lbs. 66.00-67.15.

LARGE FRAME 1-2: One lot 1013 lbs. 62.75.

LARGE FRAME 2: Three lots 470-700 lbs. Holsteins 57.25-59.00; Couple lots 835-1070 lbs. 54.25-55.75.

**FEEDER HEIFERS**  
MEDIUM FRAME 1: One lot 331 lbs. 64.85; couple lots 430-475 lbs. 58.50-59.85.

**FEEDER BULLS LARGE FRAME 1:** One lot 360 lbs. 75.00; one lot 583 lbs. 69.50.

MEDIUM FRAME 1: One lot 595 lbs. 64.00.

SMALL AND MEDIUM FRAME 1: One lot 453 lbs. 65.75.

LARGE FRAME 2: One lot 710 lbs. 59.00.

## Hunter's Auction

Monday, October 20  
Rising Sun, Md.

Report supplied by auction  
**FEEDER HEIFERS:** Good to Choice 51.00-55.00; Other 47.00-51.00.

**FEEDER STEERS:** Standard to Good 65.00-69.50.

**COWS:** High Choice to Prime 48.25-49.75; Good to Standard 46.75-47.50; Utility 44.50-46.50; Cutters 42.75-44.25; Canners 39.75-44.00.

**CALVES:** Prime 200-300 lbs. 80.00-91.00; High to Choice 140-180 lbs. 78.00-89.00; Good to Choice 120-140 lbs. 83.00-94.00; Standard to Good 90-110 lbs. 75.00-103.00; Utility 70-85 lbs. 50.00-68.00; Low Utility 65-75 lbs. 46.00-68.00.

**FEEDER PIGS:** 20-25 lbs. \$11 to \$18 by hd.; 35-45 lbs. \$22 to \$34 by hd.

**HOGS:** 140-165 lbs. 36.00-39.00; 185-225 lbs. 47.50-50.50.

**SOWS:** 38.50-44.00.

**BOARS:** 34.00-38.00.

Average of LS 214, detailed

# Livestock market and auction news

## Omaha Weekly

Thursday, October 23

Report supplied by USDA

Closing prices on Slaughter Steers and Heifers were .50-.75 lower. Cows were 1.00-1.50 lower and bulls weak to 1.00 lower

Four Day Receipts 11,600  
Week Ago 11,500  
Year Ago 10,500

Prices on Slaughter Steers and Heifers were forced downward on the initial session in reflection of a sharply breaking carcass trade, and most interests were not aggressive for maximum numbers in view of the poor movement of the finished product. While midweek demand improved somewhat, only a small portion of the early decline was regained. Buyers were still selective as the price differential between yield grade 3 and yield grade 4 carcasses held at 11.00-12.00 per cwt. The overall finish of the Steer and Heifer supply was rather attractive with a fairly liberal percentage Choice and Prime. Steers made up approximately 37 pct and Heifers 33 pct. Cows comprised 6 pct and Feeders 23 pct.

**STEERS:** At midweek, load Choice and Prime predominantly 3 1164 lbs. 68.25, three loads Choice 3 1125-1175 lbs. 68.00. Two loads Choice and Prime large percentage 4 1203 lbs. 65.50. Choice 2-4 1025-1250 lbs. 66.50-67.75. Mixed Good and Choice 2-4 1000-1225 lbs. 65.50-66.75. Good 2-3 63.00-65.50. Good and Choice 2-3 1200-1400 lb. Holsteins 62.00-64.00.

**HEIFERS:** Early, load Choice and Prime predominantly 3 1016 lbs. 66.50 during week, several loads and part loads Choice and Prime 3-4 988-1087 lbs. 66.00-66.25. Choice 2-4 900-1050 64.50-66.00. Mixed Good and Choice 2-4 900-1050 lbs. 64.50-66.00. Mixed Good and Choice 2-3 850-1050 lbs. 63.50-64.75. Good 2-3 60.00-62.50.

**COWS:** Utility and Commercial 2-4 44.00-47.00, few high dressing 47.75 Cutter 41.50-44.50. Canner and low-cutter 39.00-42.00.

**BULLS:** 1-2 1200-2000 lbs. 52.00-57.00, few individual 1 58.00-59.00.

quotations for choice 900-1100 lb steers 66.92; 1100-1300 lbs 67.10. Average cost Steers this week 66.37, average weight 1145 lbs. as compared 67.62 and 1135 lbs a week ago Average cost Heifers 64.82, average weight 1004 lbs. as compared 65.91 and 993 lbs a week ago

**COWS:** Utility and Commercial 2-4 44.00-47.00, few high dressing 47.75 Cutter 41.50-44.50. Canner and low-cutter 39.00-42.00.

**BULLS:** 1-2 1200-2000 lbs. 52.00-57.00, few individual 1 58.00-59.00.

Medium Frame No 1-2 few 350-375 lb 76.25-77.50; 400-500 lb. 72.25-76.50; 525-700 lb. 72.00-73.75, lot 560 lb. 77.00. Large Frame No 1-2 400-500 lb. 72.00-74.25; 500-600 lb. 70.00-73.25; package 915 lb. 69.75 Large Frame No. 2 Holsteins; few 475-525 lb. 63.00-65.00; lot 810 lb. 62.00; part load 845 lb. 63.90.

**FEEDER HEIFERS:** Medium Frame No. 1 few 250-350 lb. 70.50-71.50; 300-400 lb 66.00-69.00; 400-500 lb. 65.00-68.00; package 435 lb. 69.75; 500-625 lb. 64.75-67.75, lot 680 lb. 66.20; few 725-825 lb fleshy 61.00-63.00. Small Frame No 1 two packages 500-510 lb. 64.50-65.90

Medium Frame No. 1-2 275-400 lb. 64.00-67.25; 400-600 lb. 62.00-65.00; few 600-650 lb. 62.00-63.00. Medium Frame No. 2 375-425 lb. 60.00-62.75.

For the Week: Feeder Steers and Heifers closed steady to 1.00 higher. Beef cows firm to 1.00 higher, Canner and Cutter steady; late sales included Utility and Commercial 2-3 42.25-47.80; Cutter 1-3 38.50-43.25; Canner and Low Cutter 35.25-37.25; Slaughter Bulls weak to 2.00 lower; yield grade 1-2 1100-1700 lb. 51.50-60.00. Salable receipts this week near 25,600 head compared with 26,368 head last week. Feeder Cattle and Calves comprised 88 percent of the weeks receipts; Cows and Bulls 12 percent.

**FEEDER STEERS:** Medium Frame No. 1 300-375 lb. 84.25-87.75; 375-400 lb. 79.75-82.25; 400-500 lb. 78.00-82.00, two lots 425-450 lb. 83.00-84.75; 500-600 lb. 75.00-79.00, mostly 75.00-77.75, two lots 525-550 lb. 81.00-81.25; 600-650 lb. 74.00-76.50, two lots thin and gaunt 78.00-79.00; few 675-725 lb. 72.75-73.75; two packages 825-845 lb. 72.25-72.30. Small Frame No. 1 450-500 lb. 74.75-76.25

## Oklahoma Cattle

Thursday, October 23

Report supplied by USDA

Thursday Feeder Cattle auction and weekly summary

Estimated Receipts 6000  
Same Day Last Week 7736  
Trading moderately active; Feeder Steers and Heifers generally steady; demand light; supply largely medium frame No. 1 and mixed No. 1-2 300-600 lb. Feeder Steers and Heifers. Moderate buyer attendance.

**FEEDER STEERS:** Medium Frame No. 1 300-375 lb. 84.25-87.75; 375-400 lb. 79.75-82.25; 400-500 lb. 78.00-82.00, two lots 425-450 lb. 83.00-84.75; 500-600 lb. 75.00-79.00, mostly 75.00-77.75, two lots 525-550 lb. 81.00-81.25; 600-650 lb. 74.00-76.50, two lots thin and gaunt 78.00-79.00; few 675-725 lb. 72.75-73.75; two packages 825-845 lb. 72.25-72.30. Small Frame No. 1 450-500 lb. 74.75-76.25

**FEEDER HEIFERS:** Medium Frame No. 1 few 250-350 lb. 70.50-71.50; 300-400 lb 66.00-69.00; 400-500 lb. 65.00-68.00; package 435 lb. 69.75; 500-625 lb. 64.75-67.75, lot 680 lb. 66.20; few 725-825 lb fleshy 61.00-63.00. Small Frame No 1 two packages 500-510 lb. 64.50-65.90

Medium Frame No. 1-2 275-400 lb. 64.00-67.25; 400-600 lb. 62.00-65.00; few 600-650 lb. 62.00-63.00. Medium Frame No. 2 375-425 lb. 60.00-62.75.

For the Week: Feeder Steers and Heifers closed steady to 1.00 higher. Beef cows firm to 1.00 higher, Canner and Cutter steady; late sales included Utility and Commercial 2-3 42.25-47.80; Cutter 1-3 38.50-43.25; Canner and Low Cutter 35.25-37.25; Slaughter Bulls weak to 2.00 lower; yield grade 1-2 1100-1700 lb. 51.50-60.00. Salable receipts this week near 25,600 head compared with 26,368 head last week. Feeder Cattle and Calves comprised 88 percent of the weeks receipts; Cows and Bulls 12 percent.



## BEEFALO FOR SALE

-Semen in stock  
-1/2, 3/4, 7/8- animals

## BEEFALO N & J

4270  
Quakerbridge Rd.  
Princeton, NJ 0854C  
609-896-0336

## FOR SALE FEEDER PIGS

State Graded - Vet inspected  
Excellent Quality and Delivery Service  
Credit Service Available

## JOHN H. THOMAS, JR.

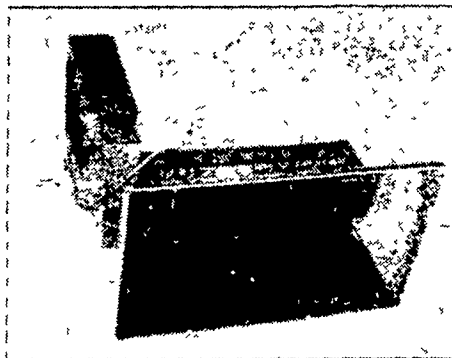
Millersville, Pa. 17551 Ph 717-872-5646

Complete Line of  
RED ROSE Feeds

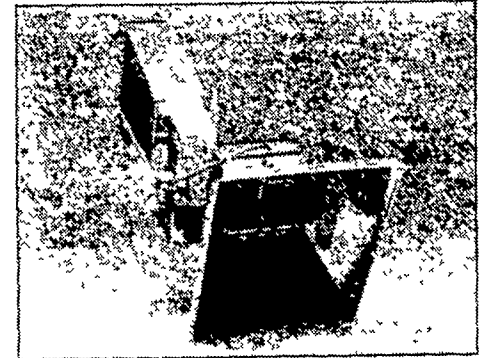
Management Program



## Infrared Brooders For Hogs



Sunnypig 3 for a ambient heating of a farrowing pen or 20 to 30 weaner pigs



Sunnypig 1 to heat a litter of piglets or a pen of 10 to 12 young pigs.

SBM has been making Brooders for more than 20 years. Nearly 100,000 Brooders are sold every year.

Sunnypigs are made of stainless steel. Their three-level radiating surface (a patented combination of ceramics, nickel chromium mesh and directional fins) is an efficient generator of radiant heat. They come equipped with a support consisting of five-foot chains, a flame safety device, a very effective primary air filter

(patented) and a replacement filter. The filter should be cleaned at regular intervals, a little work that will save you a lot.

**CHOOSE A DOWNGOING HEAT -  
CHOOSE SBM BROODERS**



CATTLE - HOG - POULTRY EQUIPMENT  
2754 Creek Hill Rd., Leola, PA 17540  
PHONE 717-656-4151

SERVING PA, N.J. and N.Y.



"Since 1959"

## PORK CHOP FARM

RD#2 Box 122  
New Holland, Pa. 17557  
717-354-9557

- Brucellosis Free Herd 127
- Entire herd tested
- Pseudorabies Free Herd 20
- Lepto Free and T.B. Negative.

We have the finest pedigreed herd of Chester White Brood Sows in the Eastern United States.

We have 200 Brood Sows in total confinement including Gestation Crates and Slatted Floors.

We farrow weekly and can supply "Sound-Meaty-Healthy" Breeding stock at all times.

"Chester Whites" — "The Durable Mother Breed"

Production Sale for 1981

June 12

November 13