

FARM EQUIPMENT

FARM EQUIPMENT

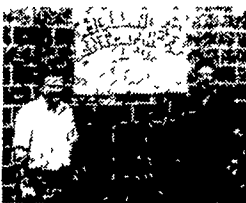
FARM EQUIPMENT

FARM EQUIPMENT

Hollinger tractor co.

749 Rothsville Rd., Lititz, Pa. 17543

(717) 626-1120
Call
Larry Hollinger
or Lee Dull
HOME
(717) 949-3451



"We want your business And we'll do our best to serve you," says Larry Hollinger (left) and Lee Dull. Lee is the latest member of the Hollinger team and well known in the construction business

CRAWLER LOADERS

Cat 955K 85J	\$19,500
Cat 955 12A as is	\$4,500
Cat 977H w/cab, good undercarriage	\$13,500
Cat 977H w/cab 90% under carriage	\$16,500
AC HDG	\$4,500
AC HD7G	as is \$4,750
JD 450C w/Backhoe, Sharp	\$18,500
JD 450, Good, Sharp	\$9,500
JD 450 B w/ROPS	\$12,500
JD 440 Dis. w/Ripper Sharp	\$5,000
TD6 w/cab, 4-in-1 bucket	\$5,500
HD6 Slant Hood	\$6,500
IH 175 Sharp	\$8,500

DOZERS

JD 350 straight blade w/winch	\$7,500
IHC TD 25C's	\$25,000 up
AC HD 41 Blade & Ripper	Call

BACKHOES

Link Belt LS 5000	\$16,500
Bantam C-300 Crane	\$8,500
Ford 4500 Sharp	\$7,250
Ford 3400 w/cab	\$4,500
Backhoe Attachments (New) for 931 CATS	ea. \$2,500
Case W3 Dsl	\$3,850
(2) Case 580	ea. \$6,000
Case 580B w/ROPS	\$8,500
AC 60, Nice	\$4,500

GRADERS

(2) Gradalls 2460 dsl U/D	ea. \$5,500
AC-45 w/cab (diesel)	\$6,500

AIR COMPRESSORS

Jaeger 125	\$1,750
------------	---------

ROLLERS

Gallon 3-5 Ton	\$2,500
----------------	---------

TRAILERS

General 18 ton Tag-a-long with Air 15" Rubber Good	\$5,500
Fruehauf 25 Ton 5th wheel	\$3,850
Rogers Tilt Top 5th wheel	\$4,500

TRUCKS

Mack B61 truck-tractor w/wetline, sharp	\$4,500
1970 Int. Single Axle w/238 Ex Cond	\$7,850

FORKLIFTS

KD Diesel 8,000 lb lift	\$8,500
-------------------------	---------

LOG SKIDDERS

Taylor GMC Diesel Good Rubber Ready to Go	\$8,500
Case 1816Skid Loader	\$3,500

RUBBER TIRED PAYLOADERS

560 int. w/cab, 6 yard machine	2 at \$45,000
	1 at \$75,000 ready to go
Hough 90 w/cab articulate machine	\$45,000
Hough 70 w/cab	\$12,500
W5 Case	Make Offer
1979 Ford A62, Dsl, Articulating Machine, 850 hrs	\$2,950

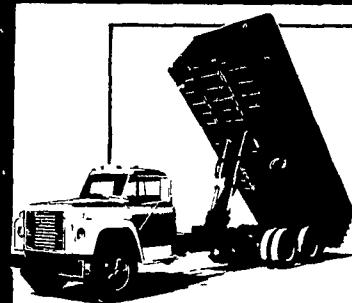
MISCELLANEOUS

(2) Winch to put on truck-tractor Riding Sweeper	Make Offer \$950
--	------------------

FARM EQUIPMENT

FARM EQUIPMENT

FARM EQUIPMENT

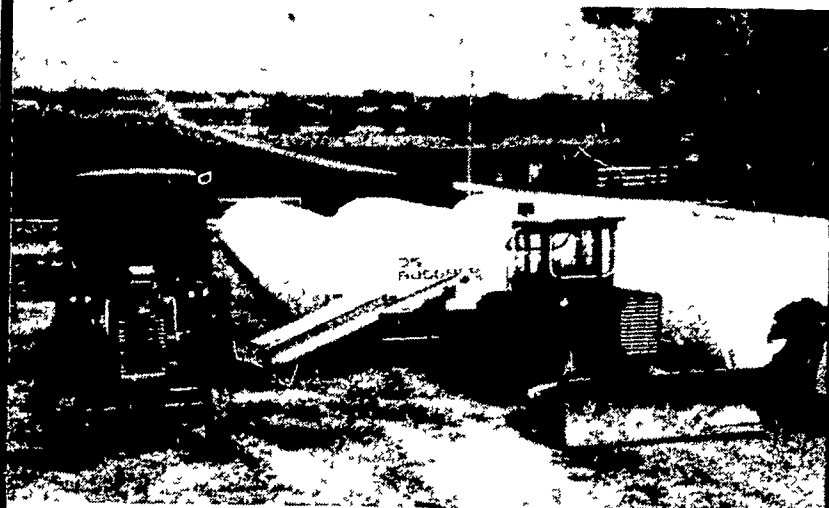


Tough, Dependable Truck Bodies & Hoists



FARMERSVILLE EQUIPMENT INC. Ph. 717-354-4271

AG-BAG



THE AFFORDABLE SYSTEM DESIGNED FOR THE 80's HIGH MOISTURE STORAGE WHEN & WHERE YOU WANT IT

FEATURES

- ALL HYDRAULIC OPERATION
- EASILY TRANSPORTABLE
- UNLIMITED SEALED STORAGE

STRETCH YOUR FORAGE DOLLAR — THROUGH PREVENTION OF SHRINKAGE AND SPOILAGE

Exclusive Dealer For
Pennsylvania, New Jersey, Maryland
Delaware, Virginia, West Virginia
Note: We Need Part Time & Full Time Salesmen for These Areas



AG-BAG CORPORATION

AG-BAG DEMONSTRATION
CALL FOR PLACE AND DETAILS

Bank Financing - Short and Long Term Leasing Available

FIELD QUEEN
FORAGE HARVESTERS

SALE OR LEASING ON ALL NEW EQUIPMENT

HESSTON
FARM EQUIPMENT

"SPECIAL"

FOX SUPER D w/3 ROW NARROW CORN HEAD, HAY PICKUP AND SNAPPER HEAD
~~\$14,900.00~~ Reduced To **\$12,500.00**
w/snapper head

JUST TRADED

1972 702 NI Diesel Engine, 3 Row Snapper Head, Corn Head and Hay Head. Call For Special Price.

GOOD USED EQUIPMENT

(2) Super D Fox w/corn & hay heads	White 4R Aire Planter	Hesston 1520 Slurry Spreader
NH 818 SP w/corn head	Hesston 110 SP win-drower, exceptional cond., must see	Case 655 SP Win-drower
(2) Hyd side Dump Wagons	Hesston 1520 Slurry Spreader w/loading impeller, 1 yr old	NH 850 Round Baler
(2) Forage Dumping Stations		MM G1000 Tractor, Ex Cond

FARMERS EQUIPMENT EXCHANGE INC.

We Want To Be YOUR Farm Equip. Co.
1188 Enterprise Road/East Petersburg, PA 17520
Lancaster County

Telephone 717-569-8756 717-392-7795

Sales: Frank Walters
717-733-3665 (Res.)
Sales: Bob McElroy
Sales: "Skip" Geiter
717-397-6306
Sales: Phil Leminger
215-267-7870

Sales: Ralph Benner
717-786-1384
Sales: Robert Kreider
717-569-1011 (Res.)
Sales: Bud Thompson,
Palm, Pa.
215-679-6024

Sales: Dennis Shenk
717-872-8376
Parts & Service
Frank Brosemer
717-859-2775 (Res.)

Now ... move big volumes fast with 2 new big-capacity International spreaders



If you have a lot of manure to haul and spread throughout the year, we have some good news for you... two big-capacity, high-strength spreaders.

The 595 has a heaped capacity of 343 cu. ft., the 575 a heaped capacity of 271 cu. ft. Here's capacity to make short work of your biggest spreading jobs, capacity that will give you more time for other jobs. Both models have tandem wheels on bogie-type axles to help ease heavy loads over rough ground at fast spreading speeds.

Finance plans available.

INT. 575 SPREADER
Now Only **\$4,790**

INT. 595 SPREADER
With Hyd. EndGate
Now only **\$6,560**

R.S. HOLLINGER & SON INC.

113 W. MAIN ST., MOUNTVILLE
INTERNATIONAL QUALITY PARTS
FACTORY TRAINED SERVICEMEN

PHONE: 717-285-4538
MON. thru FRI. 7 to 5
SAT. 7 to Noon

In York County Call Our Salesman: CHARLES M. LEHMAN - 717-755-6486