

Forage Council

(Continued from Page B4)

TUESDAY, NOVEMBER 25

- 8:00 a.m. - 9:00 a.m. REGISTRATION - Lower Lobby. CONFERENCE: SUITES D, F, H & J, Lower Level
- 8:30 a.m. - 12:00 p.m. THEME: SILAGE, THE SUCULENT FORAGE Chairman: A.G. Lueck, President, Master Corn Growers Association.
- 8:30 a.m. Silage In The 80's, J. W. Thomas, Dairy Nutritionist, Michigan State University, East Lansing, MI
- 9:15 a.m. Silage Packages For the 80's, A. R. Grout, Professor, Agricultural Engineering Extension.
- 9:45 a.m. A Critical Look At Additives & Preservations, N. P. Martin, Extension Forage Agronomist, University of Minnesota, St. Paul, MN.
- 10:30 a.m. MILK AND COFFEE BREAK
- 11:00 a.m. Improving Corn & Hay Crop Silage As A Feed - R.S. Adams, Extension Dairy Specialist
- 11:30 a.m. High Moisture Corn And Ground Ear Corn - Silage Or Concentrate - H. W. Harpster, Assistant

- Professor of Animal Science.
 - 12:00 Noon LUNCHEON - Trinidad Room
 - 1:15 p.m. - 4:00 p.m. THEME: HAY ON THE MOVE Chairman: D. P. Wertman, President, Pennsylvania Seedsmen's Association. Forage Harvesting Equipment For The 80's - S. J. Hartung, Manager, Factory Marketing, John Deere Ottumwa Works, Ottumwa, IA.
 - 1:45 p.m. New Approaches To Evaluating & Marketing Hay - D. A. Rohweder, Extension Agronomist, University of Wisconsin, Madison, WI
 - 2:15 p.m. Hay Preservatives - How To Stay? - V. L. Lechtenberg, Research Agronomist, Purdue University, Lafayette, IN.
 - 2:45 p.m. Solar Hay Drying - An Illinois Experience - V. G. Vahlkamp, Illinois Hay Producer.
 - 3:15 p.m. Infrared - Tomorrow's Approach To Forage Analysis - J. S. Shenk, Associate Professor of Plant Breeding.
 - 3:45 p.m. Using Infrared In Hay Marketing - A Western Pennsylvania Experience - R. J. Rugaber, County Agent of Butler County.
- NOTE: Except where otherwise indicated, speakers are staff members of The Pennsylvania State University's College of Agriculture.

LADIES PROGRAM

MONDAY, NOVEMBER 24

- 2:00 p.m. Sugar and spice and other things nice - recipe ideas for the holidays to satisfy your sweet tooth without destroying your wasteline. If you do make it sweet, make it count with extra nutrition. Also includes spicy ideas for decorating your home for the holidays. Alletta M. Schadler, Extension Home Economist, Lebanon County.

TUESDAY, NOVEMBER 25

- 9:30 a.m. Santa on a Shoestring - ideas for gift giving and decorating that are easy, quick, and/or inexpensive. There will be some for you to see and some for you to do yourself. Sherry will provide materials for you to make three Christmas ornaments. Sherry Kalbach, Craftswoman, Lebanon County
- 1:30 p.m. A local Tour will be provided.

1980 PFGC SPECIAL FORAGE CONFERENCE

Registration: All persons \$15.00.

Food Functions:

Monday-Luncheon \$6.75

Banquet \$15.00

Tuesday-Luncheon \$7.25

Ladies Program \$5.00

Send your name, organization, address and whether your wife will or will not attend along with your check payable to: The Pennsylvania Forage & Grassland Council by November 17, 1980 to: Mr. Richard Hann, Secretary-Treasurer, Pennsylvania Forage & Grassland Council; Milton Hershey School Farms, Hershey, PA 17033

Cumberland 4-H to run beef and lamb sale

CARLISLE — The 1980 Cumberland County 4-H Beef and Lamb Roundup and Sale will be held on Tuesday, November 11, at the Carlisle Livestock Market. The show will start at 9:30 a.m. and the sale at 8 p.m.

Ten steers and five pairs of lambs will be selected to represent Cumberland County at the 1981 Farm Show. All members will be judged for showmanship, and a champion showman in each age category will be selected. County Champion and Reserve Champion steers will be selected.

A sale champion and reserve champion will be selected from among the 17 steers to be sold at auction Tuesday evening.

Champion and reserve champion market lambs and champion pair of market lambs will be selected and approximately 32 lambs will be sold at auction beginning at 8 p.m.

There are 32 members in the 4-H Baby Beef Club and 30 members in the Conodoguinet 4-H Sheep Club. These young 4-H'ers are "Learning by Doing". They gain practical experience in animal husbandry, business and economics, and also develop socially.

Buyers of previous years have indicated their satisfaction with the quality of the steers and lambs they purchased. Ribbons and signs to display in a window or on a counter will be available for each buyer. Anyone can purchase a steer or lamb.

This would be a good opportunity to fill your freezer with quality beef and lamb.

Come out to the Carlisle Livestock Market Tuesday, November 11 and support the Cumberland County 4-H Beef and Lamb Clubs.

PARS SOIL SERVICE
HAS A NEW SOLUTION
TO AN OLD PROBLEM.
(LIQUID CALCIUM SOLUTION)
For Correction of Calcium
Deficiency in Crops

**BULK DELIVERY AVAILABLE
ON YOUR FARM**

For Information Call:

PARS SOIL SERVICE

Box 488, RD1
Elizabethtown, PA
717-367-2667 or 717-872-7342

EARLY PAYMENT DISCOUNT AVAILABLE



**NEED
MORE ROOM?
Read The
Classified
Real Estate Ads**

TO ALL TURKEY & BROILER GROWERS:

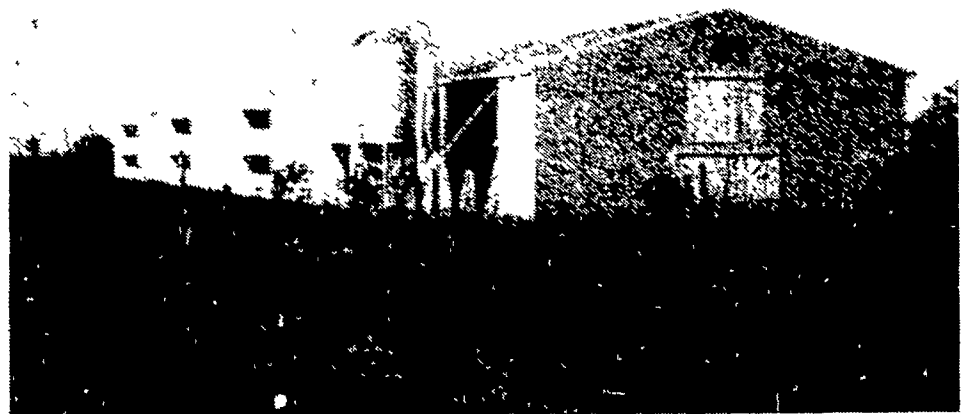
**IF YOU'RE CONSIDERING PUTTING
UP A POULTRY BUILDING, GIVE
AGRI-INC. A CALL FOR PLANS
AND A LAYOUT.**

We Offer The Complete Package

**Our Buildings Are
Covered With
Reynolds Aluminum
Roofing And Siding**



**REYNOLDS
ALUMINUM**



AUTHORIZED REYNOLDS ALUMINUM DISTRIBUTOR

For information, call or write:



DESIGNERS AND BUILDERS OF SYSTEMS

EPHRATA, R. 4, (Farmersville) PA. 17522
PHONE 717-354-4271

STORE HOURS: Mon. Thru Fri. 7:30 to 5:30

