

## Forage Council to mark 20th anniversary

HERSHEY — The Pennsylvania Forage and Grassland Council will celebrate the 20th Anniversary of its formation with a special two day Forage Conference at the Hershey Convention Center on November 24 and 25.

Officially organized in 1960, PFGC was the first such Council organized in the U.S.

Since that time the council has sponsored or co-sponsored many programs of benefit to Pennsylvania's forage-livestock industry, including Hay & Silage Shows, Forage Progress Days, the Outstanding Grassland Farmer program, Forage Workshop and mostly recently the nationally recognized Alfalfa Growers' Program.

The Conference gets underway Monday morning, November 24 and continues through Tuesday afternoon and includes speakers from many of the 16 States Forage Council's organized during the past 20 years.

The conference will include a special recognition banquet and entertainment Monday evening preceded by a Dairy Punch and Cheese reception sponsored by the State's Dairy Industry.

Plans for the conference includes a special ladies program Monday afternoon and Tuesday. Ladies are also welcome to attend the luncheon and banquet.

The \$15 registration fee includes a complete conference proceedings available at the time of registration.

Details on the conference including housing reservation forms are available from the Council's Headquarters c/o Richard Hann, Hershey School Farms, Hershey 17033.

MONDAY, NOVEMBER 24

9:00 a.m. - 12:00 p.m. REGISTRATION - Lower Lobby -

### Pseudorabies virus

(Continued from Page B2) boiler through a system of differential thermostats.

"The system has paid for itself in about three years," Six explained.

"In the winter the system carries about 25 percent of the heat load during the day. It averages out to about 10 to 15 percent of the load throughout the winter. Building temperature is maintained at 85 to 90 degrees.

The Snell feeding program is based on high moisture corn because of the speed in harvesting and silo loading. But this is balanced by the extra labor and management required in its feeding.

The corn is harvested at about 22 to 23 percent moisture. At 25 percent, it's too much trouble to process through the bins and doesn't crack but flours.

The Snells tried a mix-mill

system but have essentially abandoned it because of problems in balancing the high moisture corn ration. Now, the mill is used only to crack the corn.

Platform scales are used for weighing such things as vitamins and supplements and a concrete mixer is used to process the ration.

First, soybean meal goes into the ration, followed by the supplements and metered dicalcium phosphate. It's mixed for about five minutes. After the corn is cracked, it is included and mixed for another five minutes.

A bag of rolled oats or colored sawdust is added from time to time to test the mixing. If this system does not prove out, the Snells plan to revert to a batch ribbon mixer.

The Snell operation also includes a herd of about 500 fat cattle.—DA

Hershey Convention Center Coffee and Danish available at Registration. CONFERENCE: SUITES D, F, H, and J, Lower Level

10:30 a.m. - 12:00 p.m. THEME - FORAGES & THE RUMINANT - PAST, PRESENT & FUTURE. Chairman: R. J. Wangness, Head, Department of Dairy and Animal Science. The Forage Plant - W. K. Griffith, Eastern Director, Potash/Phosphate Institute, Great Falls, VA. The Ruminant - L. D. Muller, Professor of Dairy Science.

12:00 p.m. - 1:15 p.m. LUNCHEON - Trinidad Room. PROGRAM - Meet Our Alfalfa Champions.

1:15 p.m. - 4:45 p.m. THEME - ALFALFA, QUEEN OF THE FORAGES. Chairman: K. T. Leath, President, Pennsylvania Forage and Grassland Council.

1:15 p.m. Alfalfa - Challenges in the 80's, A.A. Hanson, Director of Research, Waterman-Loomis Co., Highland, MD

1:45 p.m. Alfalfa - Challenges in Seed Production, A. S. Bell, Ranch Manager, J. G. Boswell Co., Corcoran, CA

2:15 p.m. Alfalfa Research in the Decade Ahead, R. R. Hill, Jr., Research Agronomist, U.S. Reginal Pasture Laboratory, University Park, PA.

2:45 p.m. MILK AND COFFEE BREAK

3:15 p.m. Pennsylvania's Alfalfa Growers Program - What We've Learned - Production Practices - J. E. Baylor; Nutrient Relationships - L. E. Lanyon; Alfalfa Production Costs - W. K. Waters

4:00 p.m. How our Alfalfa Champs Did It - J. Z. Shearer, County Agent Franklin County, Moderator; H.G. Gayman, (Franklin Co.) - 1977 Champion; I.H. Bare, (Lebanon Co.) - 1978 Champion; D. C. Schrack, (Clinton Co.) - 1979 Champion plus our 1980 Grand Champion.

4:45 p.m. Our Grasslanders of The Decade Tell Us How -

S. A. Dum, Professor, Farm Management Extension, Moderator.

5:10 p.m. Annual Report Pennsylvania Forage & Grassland Council - R. S. Hann, Secretary-Treasurer

6:00 p.m. - 7:00 p.m. DAIRY PUNCH AND CHEESE PARTY

7:00 p.m. RECOGNITION BANQUET. Masters of Ceremonies: J. K. Evans, Extension Forage Agronomist, University of Kentucky, Lexington, KY

"Special Entertainment"

(Turn to Page B5)

### HOG PRODUCERS!

Get Top Price for Your Hogs at New Holland



Sold in sorted lots the auction way. See them weighed and sold and pick up your check.

SALE EVERY MONDAY - 8:00 A.M.

NEW HOLLAND SALES STABLES, INC.

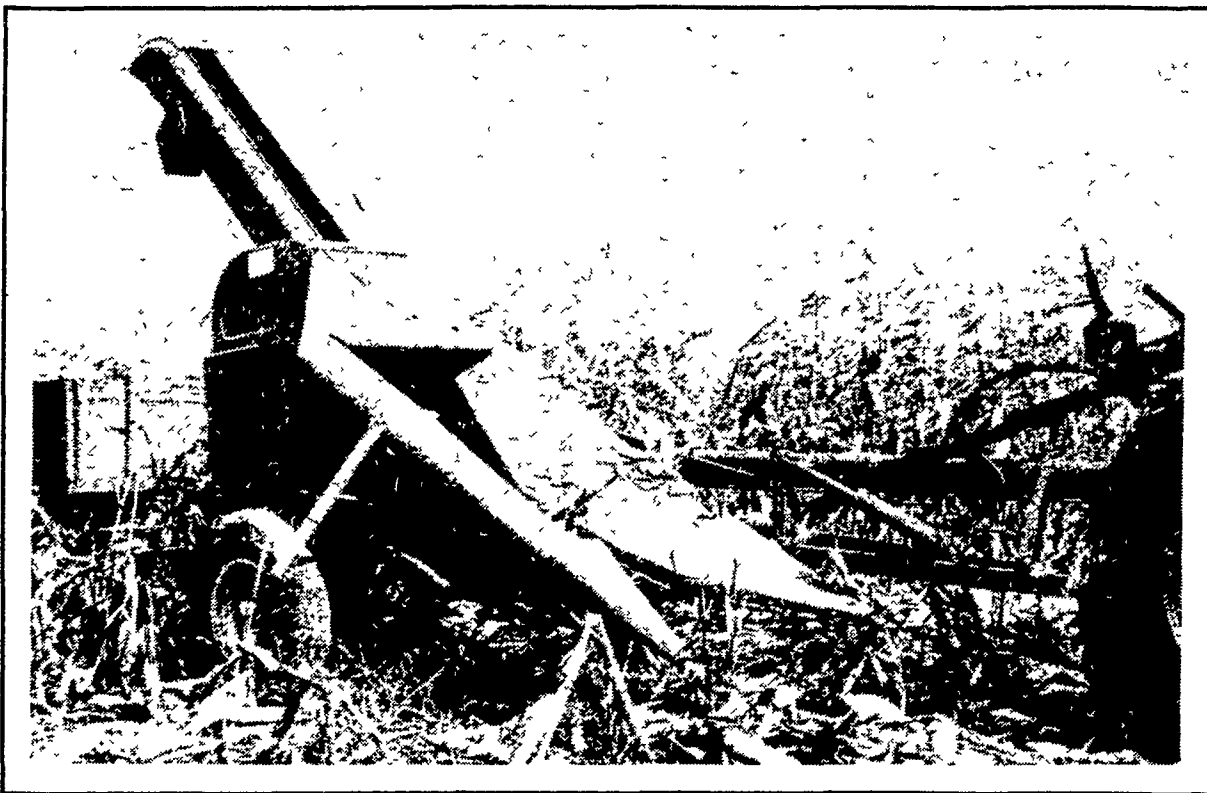
Phone 717-354-4341

Daily market Report - Phone 717-354-7288

Abe Diffenbach, Manager



### CALHOUN DIVISION CORN PICKER



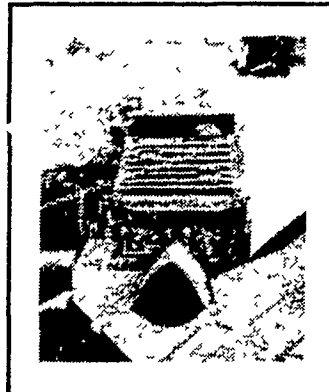
Designed for years of dependable corn harvesting.

The Model 2005 features three roller type gathering chains with wide lugs that lift the leaning stalks without tearing - Long open end snapping rolls - Low boot center elevator that is sway-backed to follow the slope of the

snapping rolls lets ears shed off the rolls without shelling - Under mounted chain sprockets that operate the lugs right down to the ground line - Adjustable snouts



Big Capacity Gathering Unit



Eight Roll Husking Bed



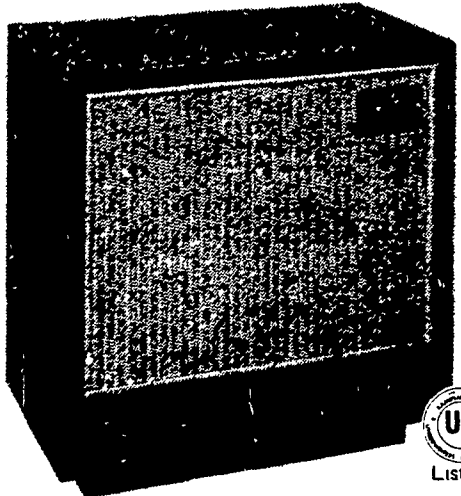
Large Fan to Clean Ears

SPECIAL OFFER - \$3995

### GRUMELLI'S FARM SERVICE

Quarryville, PA 17566  
717-786-7318

### SUBURBAN



coalmaster

SAVE UP TO 60% ON MONTHLY HEATING COSTS...

Install Coalmaster as either free standing unit or in a fireplace. A deep ash pan provides a means of easy ash removal. HINGED LIFT TOP reveals a convenient cooking surface.

\$339

MARTIN HARDWARE & EQUIPMENT CO.

Rt. 510, 1 1/2 Miles South of Schaefferstown, PA  
Phone 717-949-6817

Open Mon.-Fri. 8 to 8; Wed. 8 to 12; Sat 8 to 5