

Agway sales group views latest swine research

BY DICK ANGLESTEIN
LEXINGTON, IL. —
Agway swine feed salesmen got a first-hand look at the latest in swine research and facilities at the FS Research Farm of Growmark, Inc. located just north of Bloomington, Ill. last week.

Research at the farm is centered on health and feeding programs for both swine and feedlot cattle. The study facility, which is patterned as closely as possible after farmer-owned commercial operations, is

part of the network of Cooperative Research Farms.

Among studies the salesmen took a look at were the early weaning of pigs at three weeks, solar-heated buildings with a system of side doors which can be opened or closed according to the weather, programs to stimulate gilts to come into heat, substituting the feeding of sunflower meal for soybean meal and the feeding of stillage from a

corn-ethanol operation to feedlot cattle.

Agway swine feed salesmen participating in the tour were John Harner, Richard Myer, Francis Strause and Ray Wallace. Also taking part were Robert Weller and Henry Zajac, Farm Enterprise Service Managers, and Joseph Heeg, from the Agway office.

Host for the tour of the swine research facility was Dr. Gary G. Pearl, veterinarian, who directs



Group discusses latest in swine studies outside new breeding and gestation building.

operations at the farm as Feed Research and Development and Technical Services Manager for Growmark, Inc. Growmark is the parent corporation for FS Services, Inc. and Illinois Grain, Inc., which operates in the three-state area of Illinois, Iowa and Wisconsin.

Also, taking part in the tour was Charles Taylor, manager of the farm.

A farrow-to-finishing operation, the research farm maintains a herd of about 135 to 140 breeding females. Only boars are brought into the herd. The females are three-way crosses of Hampshire-Yorkshire-Chester

Whites with purebred boars; rotated from the three breeds.

Pigs are weaned at three weeks and then bred in the first heat after conception. Eight farrowing groups are maintained, with 36 crates in the farrowing house.

In January, 1979, a new breeding-gestation building was opened on the farm. It is totally environmentally controlled, heating and air conditioning.

A clear roof system, with no collectors, permits the solar heating of attic air, which is pulled down into the building during the winter

and vented to the outside during the summer.

"We estimate that we're saving about 15 to 20 percent in heating costs," Dr. Pearl said.

The building, a modified open-front, also features a system of side doors, which can be opened or closed according to the weather.

Everything except replacement gilts are confined on slatted floors. Gilts are kept outside until a two-stage selection is made at six and seven months. The final selection is made on the basis of feet, legs, con-

(Turn to Page A21)

(Continued from page A19)
formation and information from about one-farrowing group gilts.

A research conducted on rhinitis, which good response vaccine. Submitted three farrowing, submitted slaughter in determine a damage. No rhinitis have pigs.

Another study iron inject the third and compared to plication.

"We found th



There are operation or



Sales personnel from Agway gather in front of FS Research Farm sign with Dr. Gary G. Pearl, research director, right, and Charles Taylor, farm manager, second from right.

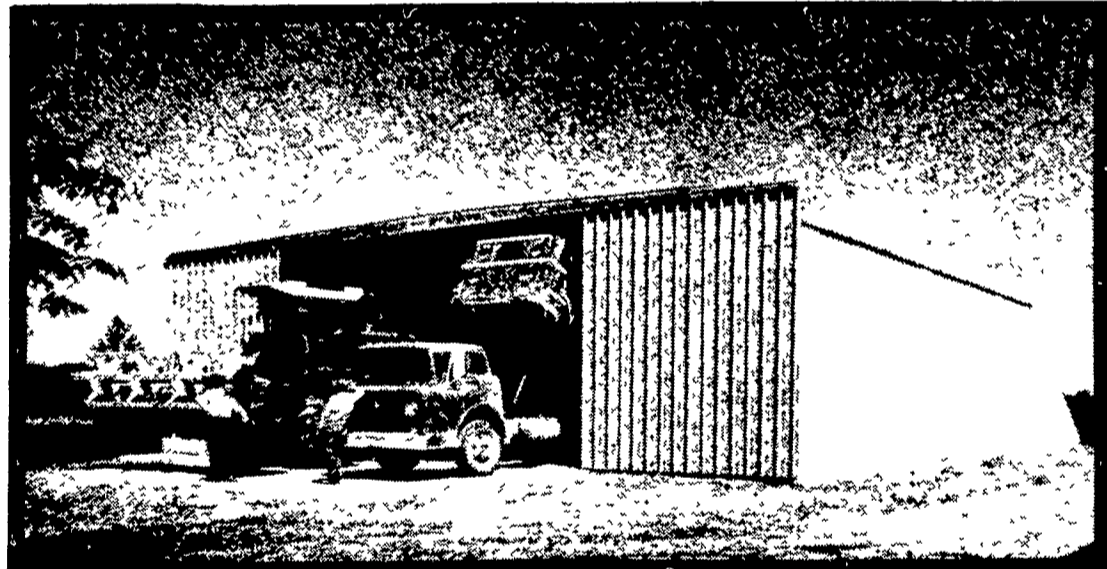
Butler Farmstead Buildings

SEE YOUR BEFORE YOU BUY

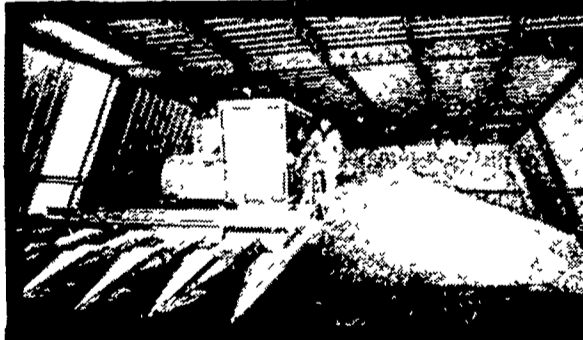
LESS THAN \$4200*
30'x50'x11'
with 16'x10' D/S Door
FARMSTED I
Galvanized Walls and Galvanized Roof

LESS THAN \$5300*
40'x50'x14'
with 20'x13' D/S Door
FARMSTED I
Galvanized Walls and Galvanized Roof

Those Buildings Engineered for Self-Erection
(Butler will furnish Erection and Foundation Drawings)



FARMSTED I - Building Engineered For Farmer Erection



IDEAL FOR GRAIN OR MACHINERY STORAGE

LESS THAN \$71
50'x50'x
with 24'x15'7" D/S
FARMSTE
Galvanized Walls and Galvaniz

LESS THAN \$85
80'x50'x
with 30'x15'3" D/S
FARMSTE
Galvanized Walls and Galvaniz

* All Building F.O.B. Annville, Pa.
* Buildings not equipped as shown
* Prices Based on Survey of Agri-Builders
* Prices Could Vary With Each Agri-Build

P. E. HESS, BUTLER MFG. CO.
Box 337, Oxford, PA 19363

Dealer Inquiries Available in: Pennsylvania Counties Arm strong, Beaver, Butler, Cameron, Clinton, Columbia, Crawford, Elk, Erie, Indiana, Lawrence, Luzerne, Lycoming, Mercer, McKean, Sullivan, Warren, Wyoming Maryland Counties - Baltimore, Harford New Jersey Counties - Sussex, Somerset, Morris, Passaic, Atlantic, Cape May **No Dealer Fees.**

Name _____
Address _____
County _____ Zip _____
City _____ State _____
Phone _____
(Include area code) LF

★ BUTLER AND AGRI-BUILDERS ARE FIGHTING IN

- | | | | | | |
|--|--|--|---|--|--------------------------------|
| C & M SALES INC.
R.D.#1
Honesdale, Pa. 18431
PH: 717-253-1612 | KNOXVILLE CONSTRUCTION
Knoxville, Pa. 16928
PH: 814-326-4188 | B.T. CONTRACTOR
P.O. Box 535
Biglerville, Pa. 17303
PH: 717-677-6121 | LEROY E. MYERS, INC.
Route #1, Box 163
Clear Spring, Md. 21722
PH: 301-582-1552 | D. E. SMITH, INC.
Mifflintown, Pa. 17059
PH: 717-436-2151 | AG
Ches
PH |
| A. E. ENGEL, INC
P.O. Box 216
Marlton, N.J. 08053
PH: 609-983-4404 | SUNNY MEAD SALES
RD #3, Box 409
Altoona, PA 16601
PH: 814-944-6045 | ORVILLE MACK
P.O. Box 47
Nazareth, Pa. 18064
PH: 215-759-1331 | BRIDGEWATER BUILDING SYSTEMS INC.
R.D. #2
Thompson, Pa. 18465
PH: 717-727-2868 | O. A. NEWTON & SON CO.
Bridge, Delaware (1-9933)
PH: 302-337-8211 | KELLY
SY
R
Lewi
PH |