

# Sale Reports

A Public Sale of real estate was held October 14 by Ivan J. and Rosa F. Clark, 2 mile north of Buck, between Truce and New Providence, Lanc. Co., Pa. Between 50 and 60 people attended the

sale. The 61 acre farm with a 2½ story brick house, large barn, milk house and silo, corn barn, hog barn, implement shed, storage shed and 3 car garage was sold for



**READ  
LANCASTER FARMING  
FOR COMPLETE  
AND UP-TO-DATE  
MARKET REPORTS**

\$4320 an acre of \$263,520 to Elam Allgyer, New Providence, Pa.

Sale conducted by Kreider & Kline Auction Service.

xxx  
A Dispersal Sale of 41 registered Holsteins was held October 16 by Wendell W. Shelly, R.D. 2, Mifflintown, Pa.

The top animal sold was an Astronaut heifer which brought \$3000; the 2nd high was her dam, an Originator daughter, which brought \$2700; 3rd high was an Astronaut daughter which sold for \$2600 and a Fond Memory daughter brought \$2250.

The average of the 41 Holsteins sold was \$1846 or a total of \$75,700.

Sale Mgrs. & Auctioneers were R. Austin Backus Inc.

xxx  
A Public Auction of antiques and furniture was held October 18 for Robert S. Spiess and Helen W. Spiess, 2307 Helena Rd., Lancaster, Pa.

Items sold included: Pa. Slant Top Desk \$1250, Spinning Wheel \$280, Pa. Dower Chest \$145, Hutch Table \$260, Wicker Table \$200, 4 Wicker Chairs \$180, 6 Bar Stools \$150, Victorian Rocker \$85, Riding Mower \$570, King Size Quilt \$170, Spinning Wheel Lamp \$125 and Lowery Organ \$575.

Auctioneer was John H. Cooper.

xxx  
A Public Auction of lawn and garden equipment and shop tools was held October 18 by Clarence S. and Clea M. Lefever Jr., S. Kinzer Rd., Paradise Twp., Lancaster Co., Pa.

Prices included: 1940 J.D.D Tractor \$875, 1971 Pickup Truck \$700, Planer

Lancaster Farming, Saturday, October 25, 1980—D27

\$390, Riding Mower \$275, Wood Lathe \$200, Shaper \$180, Sander \$70 and Corn Sheller \$55.

Auctioneers were Ira & Dale Stoltzfus and Jay Leary.

xxx  
A Public Auction of farm machinery and antiques was held October 18 by Mr. & Mrs. David Spohn on Plum Creek Rd., Center Twp., Berks Co., Pa. There were 152 registered bidders present.

Items sold were: J.D. 50 Tractor \$1150, Hesston 7 Haybine \$1925, N.H. #456 Mower \$1020, J.D. 30' Bale & Grain Elevator \$450, Horse Drawn 2-row Corn Planter \$260, Iron Kettle \$110, Mantel

Clock \$120, Dry Sink \$525 and Player Piano \$110.

Faust-Kershner were the auctioneers.

xxx  
A Public Auction of farm machinery and hay was held October 17 by Herman L. and Roberta A. Elliott, R.D. 7, Mt. Airy, Maryland.

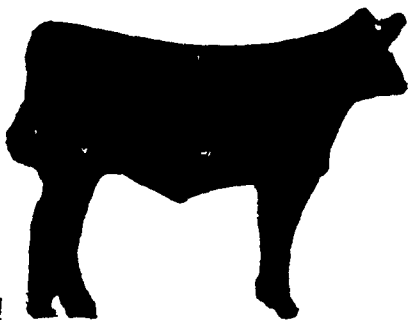
Some prices received were: Timothy Hay \$1.25 per bale, Mixed Hay .85 per bale, J.D. A Tractor \$925, J.D. 346 Baler \$4400, Oliver 3 pt. trip back Plow \$300, N.I. Corn Picker \$525, J.D. Rototiller \$180, J.D. 700 Grinder Mixer \$3300, 1974 ¾ ton Chev. Pickup \$1775, and Racks for same \$125.

Robert C. Mullendore & Tom Cawood, Auctioneers.

## 4th ANNUAL GREAT EXPECTATIONS CLUB CALF SALE

All calves will be:  
Pre-Conditioned  
&  
Halter Broken

THIS WILL BE  
OUR BEST SALE  
YET!!!  
DON'T MISS IT!!!



Approximately 45  
specially selected  
calves will sell.  
These full bloods  
and their crosses  
sell:

ANGUS, CHIANINA,  
MAINE ANJOU, SIMMENTAL,  
LIMOUSIN AND HEREFORD

SALE DATE: NOVEMBER 28, 1980  
8:00 P.M. SHARP

### SHADY LANE SALE BARN

Quarryville, PA  
¼ Mile West of Quarryville of Rt. 372 on Oak Bottom Rd.  
For More Information Contact: DONALD C. WALTER  
RD 2 Airville, PA Ph: 717-862-3366

## FEEDER SALE!

Wed., Oct 29  
7:00 P.M.

Four States'

HAGERSTOWN MD

Call: 301-733-8120

## 1980 FEEDER CATTLE & CALF SALES

SOUTH BRANCH STOCKYARDS, INC.,  
MOOREFIELD, W. VA.  
Phones: (304) 538-6055 —  
538-6600 — 257-1054

FRI., OCT. 31: Clean-Up Sale ... all kinds of  
cattle  
(900 head)  
ALL SALES START AT 7:30 P.M. —  
NUMBER OF HEAD ESTIMATED

## PUBLIC SALE Final Liquidation DAIRY FARM

2 Adjoining Tracts 124 Acre and  
148 Acre To Be Offered  
Separately Or As A Whole

FRIDAY, OCTOBER 31

11 A.M. ON THE PREMISES

The undersigned will offer at Public Auction the following tracts of Real Estate situated and lying in Liberty Township, Adams County, Pa., located between Emmitsburg, MD & Fairfield, PA just south of Gettysburg, PA along both sides of Tract Road LR 01001.

Directions: Go 1 mile West of Emmitsburg, MD turn on Tract Rd. at Sunoco Gas Station; go 3 mi. to dairy farm.

TRACT (1) containing 124 acres, more or less, mostly good cropland, some pasture, pond, improved with large modern 320 free stall barn, double 6 Herringbone milk parlor, 1050 & 1420 gallons s/s milk tanks, 25'x75' sealed silo and 30'x80' top unload silo and two auto. feed bunks, bank barn, attached shed and other items. Nice 12 room late Victorian house, 2 baths, 2 fireplaces, central heat, modern kitchen, 2 - car garage.

TRACT (2) containing 148 acres, more or less, mostly cropland, some pasture & woods, large pond. Long road frontage. Zoned for General Use.

TERMS: 10% down day of sale. Cash, certified check or approved check. Balance due on or before 45 days. Other terms and conditions to be announced at day of sale.

For inspections and additional details, please attend sale or contact auctioneer, attorney or owner. Not responsible for accidents on premises.

Brokers/Auctioneers/Attorneys participation invited.

JIM TROUT  
Trout Auctioneers, Inc.  
15 North Court St.  
Frederick, MD 21701  
301-663-1555  
PLEASE CLIP THIS AD

M.L. ANGELARAS, Owner  
Delano Lantz, Attorney  
717-232-8000  
P.O. Box 22  
Rockville, MD 20850  
301-258-0204

JOHN B. NOLL

## PUBLIC AUCTION FARM EQUIPMENT & HOUSEHOLD GOODS SATURDAY, NOVEMBER 8, 1980

At 11:00 A.M.

LOCATION: North on Rt. 72 from Lancaster to East Pete., turn Left at second light in East Pete. onto Graystone Rd. - Follow signs to sale on Landisville Rd.

### FARM EQUIPMENT

Ford 5000 Diesel, Ford 4000 SU Gas, Ford 3600 Diesel, Ford 10 H.P. Lawn Tractors, 1971 Chev. 12' Stake Dump Truck, 1970 Chev. 14' Stake Dump Truck, NI 2-row cornpicker pulltype, Ford 311 4-row corn planter, 2 Ford 3 pt. cultivators, 3 dump wagons with New Holland running gears, JD 14T bailer with thrower, Brady Hay Crumper, MF 3 pt Rake, Ford 501 3 pt. Mower, New Holland 16' Transport elevator, Cardinal 12' & 16' elevators, New Holland 30' elevator, N.H. Corn Drag, 401 10' International spring harrow, 6 ton Elec Flat Bed Wagon, JD 8' Spring harrow, Brillion 11' Cultipacker, JD 8' cultipacker, Oliver 3 bottom hydraulic Reset plow, NI loader with snow bucket and blade, J.D. Transport Disc, M.H. Offset Disc, MF 15 hole grain drill, EZ Flow Fertilizer Drill Sprayer, 16' Spike Harrow, Triple K 3 pt Harrow 12'8", Ferguson, 13' 3 pt. Weeder, 12' JD Spike Harrow, JD Forklift, JD Harrow, 3 80 bu. hog feeders, potatoe cutter, McCormick 10C Hammer Mill, Lincoln 225 Welder, Lincoln air grease gun, Airco torch outfit, Tobacco lath, Minnich Tobacco press, assort. tools, ½ H.P. air compressor, 15 Jamesway Windows 34"x36", 40' ext. ladder, platform scales.

### HOUSEHOLD GOODS

Formica Table with 6 chairs, GE Ref. 15 c.f., Frigidaire Freezer, Frig. Dryer Maytag Wringer Washer, Chest of Drawers, 4 pc. Bedroom Suite, Antique Meat Slicer, and much more.

AUCTIONEER'S NOTE: This sale consists of a complete line of exceptionally well-kept Farm Machinery Plan to attend.

Not Responsible for Accidents

Sale by:  
**JOHN B. NOLL**

Auctioneers:  
Burnell L. Buchen  
Wilbur H. Hosler  
665-2667

## PUBLIC AUCTION HOUSEHOLD GOODS — ANTIQUES SATURDAY, NOVEMBER 1

10:30 A.M.

Location: Take Route 322 West from Ephrata, after passing "Twin Pine Auto Sales" take the first road right which is Snyder Lane. Travel 1 block to Clay School Road turn right to farm on right. Clay Twp., Lancaster Co., Pa.

### Maytag Wringer Washer

White Electric Sewing Machine; Cedar Wardrobe like new; Breakfast Set with 4 Chairs; Hide-A-Bed; Caloric Electric Range; Double Wooden Bed; Box Spring and Mattress; Large Wardrobe with Glass Knobs; Food Filing Cabinet with Matching Island Cabinet; Wooden Extension Table; 2 Cedar Chests; Fedder Window Air Conditioner; Kneehole Desk; Bookcase; 2 Picnic Tables; Base Cabinet; Night Stand; Youth Bed; Crib; Swivel Desk Chair; Rocking Chair; Bedroom Chair; Westinghouse Dehumidifier; Tan Utility Cabinet; Large Maple Crib; Blond Record Cabinet; 5 Drawer Wardrobe; Kitchen Chairs; Coffee Table with Glass Top; Step End Table; Wash Tubs; 2 Clothes Trees; Lawn Chairs; Kerosene Room Heater; Hoover Vacuum; Metal File Cabinet; Large Mirror; Hospital Bed; Buffet; 6 Cornered Living Room Table;

### Decorated Milk Can

Clothes Hamper; Mixing Bowls; SHEEP SKINS some colored; Pictures; Dress Material; Tupperware; Roast Pans; Clothing Patterns; Food-Grinder; Window Screens; Hand Adding Machine; Planters; Cookie Cutters; Ware-Ever Pots and Pans; Electric Broiler Oven; Dormeyer Hair Dryer; Blue Canning Jars; Playpen; Bone Saw; 3 pieces Rag Carpet 21' long; Wooden High Chair; Floor Lamps; Hedge Trimmer; Feather Pillow; Books;

### Water Fall Bedroom Suite

Cane Seated Rocker; 2 Sets of 6 Decorated Plank Bottom Chairs; Decorated Rocker; Balloon Back Rocker; Copper Wash Boiler; Old Bottles and Jars; Washboard; Slaw Cutter; Glass Butter Churn; Hand Sweeper; Old Lionel Train Set; Iron Skillet; Roseville Vase; Cherry Seeder; Wooden Barrel; Small Iron Kettle; 12 Sherbets;

### Ferguson 3-Point Cultivator

Harrow Roller Combination; Pipe Vise; 4-Can Milk Cooler; Paint; 4 - L-78-15 Goodyear Belted Polyglass Tires; and many many items too numerous to mention.

Auction by

**LLOYD M. & LYDIA Z. BURKHOLDER**  
R.D.#1, Ephrata, Pa. 17522  
717-733-4567

Auction Conducted by

John E. and Paul E. Martin Auctioneers  
717-733-3511 - 717-733-3305  
Ephrata, Pa.

Food at Auction