

Eastern National posts cattle show results

TIMONIUM, Md. — Falkland Farms, Schellsburg, swept the Polled Hereford Show championships during the Eastern National Livestock Exposition held here recently.

Grand champion heifer of the show was an Enforcer 107H daughter, FLF Forcette 9002, calved January 1, 1979. She was tagged senior champion prior to her grand championship selection.

Following as reserve grand champion was the Falkland reserve senior champion, JJJ Miss Vici 904. She is a February 6, 1979 daughter of LS Beau Victor 1-30.

In the bull classes, the senior champion bull exhibited by Falklands went on to be tagged grand champion, also. FLF Stylish Mode 22, a May 2, 1978 son of FLF Distinguished took the honors.

Mohican TP Macho S1, the reserve senior bull, was tagged reserve grand champ. He is a senior yearling son of WSF PRL Justa Banner.

Other Pennsylvania exhibitors at Timonium showed well in individual classes. Show results are as follows:

POLLED HEREFORDS HEIFERS

Jr Calves
1 Falkland Farms, Schellsburg, reserve champion, 2 Scott McDonald Grand Rapids, MI-3 Kaye Shanks, Mocksville NC, 4 N Carlyle Stull, Sandy Spring, MD, 5 Calvin Saylor, Rocky Ridge, MD

Winter Calves
1 Jack Douglas Shanks, Mocksville NC, 2 4 Teresa Roadcap, Staunton, VA 3 John P Hausner Dover

Sr Calves
1 Falklands Farm calf champion, 2 Jack Douglas Shanks 3 Am Malye O'Brien Sutphen New Paris, 4 Warren Nothnick Franklinville N.J., 5 Whispering Oaks White Hall MD

Late Summer Yearling
1 Triple J Farms Richmond, VA, 2 Stephanie Earnhart Leetoria OH 3 Diane Nothnick, 4 Huckleberry Hall Farms Smithsburg MD

Early Summer Yearling
1 Falklands Farm reserve junior champion 2 Nancy Thomas, Grand Rapids, MI 3 R&T Acres, Gaithersburg, MD 4 Stephanie Earnhart 5 Kimberly Kay Shanks Mocksville, N C

Late Jr Yearling
1 Janet Frostick Frenchtown N.J., junior champion, 2,3 Huckleberry Hall Farm 4 Shawn McDonald, Grand Rapids MI 5 Elizabeth Mullinix

Early Jr Yearling
1 Falklands Farm, senior and grand

champion, 2 Triple J Farms reserve senior and reserve grand champion 3 Huckleberry Hall Farms 4 Scott McDonald, 5 William M Lillard Quicksburg VA

Sr Yearling
1 Falklands Farm, 2 William M Lillard, 3 Warren Nothnick, Franklinville N.J.

BULLS
Jr Calves
1 GR Thomas & Ye Ole McDonald Farm, Grand Rapid, MI, reserve calf champion, 2 Triple J Farms, 3 Royal Minor III, Richmond VA, 4 Spring Bottom Farm, Fairfield, 5, Calvin E Saylor Rocky Ridge MD

Winter Calves
1 2 Triple J Farms, champion calf

Sr Calves
1 JDH Polled Herefords Dover, 2 William M Lillard

Late Summer Yearling
1 Battleground Farm Salem N.J. 2 Triple J Farms 3 Stanley Roadcap 4 Garrett Billmire Sr., Earlenele MD

Early Summer Yearling
1 Huckleberry Hall Farms, 2 Spring Bottom Farm 3 Am-Malye O'Brien Sutphen 4 Teresa Roadcap

Late Jr Yearling
1 Falklands Farm W D Pleasants Sr junior champion, 2 Falklands Farm Floyd Timberlake & Son Keller Hereford Farms, reserve junior champion 3 William M Lillard 4 Huckleberry Hall Farms 5 Mullinix Beef, Inc., Woodbine, MD

Early Jr Yearling
1 Falklands Farm Walnut Hill Farm, 2 Calvin Saylor

Sr Yearling
1 Falklands Farm Mohican Polled Hereford, reserve senior and reserve grand champion

Late Two-Year-Old
1 Falklands Farm senior and grand champion

Early Two-Year-Old
1 William M Lillard 2 Am Malye O'Brien Sutphen

Get-of-Sire
1,2 Falkland Farms, 3 Triple J Farms 4 Huckleberry Hall Farms, 5 William M Lillard

Best Six Head
1 Falkland Farms, 2 Triple J Farms 3 Huckleberry Hall Farms 4 William M Lillard

ANGUS HEIFERS
1 Wayview Farms, Inc., Hebron OH 2 Glenair Farms, Elizabethton TN

Jr Calves
1,3 Gallagher's Farm Inc Ghent NY

Upper Susquehanna DHIA

(Continued from Page D13)

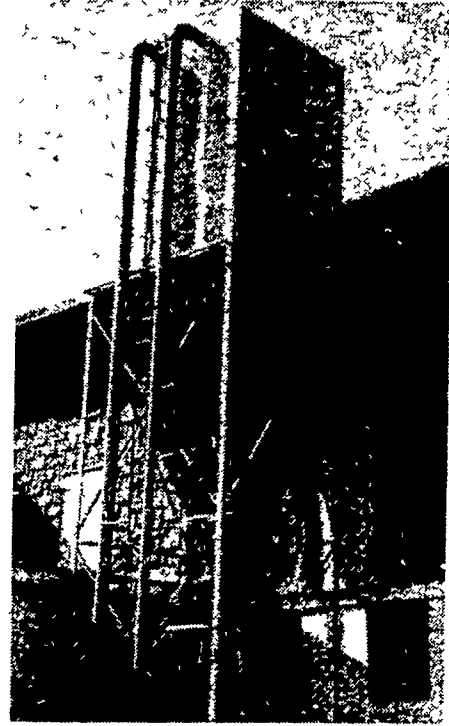
Melvin K Stoltzfus					
Edna	4-7	295	20,645	3 6	734
Del	4-5	305	24,975	3 3	835
Chris S Stoltzfus					
56	5-9	305	20,217	3,7	747
60	5-10	305	21,672	3 9	838
18	3-7	305	18,216	4 3	775
16	3-10	305	18,069	4 2	751
Paul R Smith					
10	5-8	305	22,248	3 3	738
31	5-4	305	22,574	3 7	826
35	6-1	301	17,764	3 8	682
Alvin H Martin					
18	3-0	305	16,170	4 3	689
47	3-4	299	18,128	3 8	689
Jonas R Zeiset					
Marie	4-3	305	18,663	3 6	666
Karen	7-0	305	19,585	3 4	672
Roger M Shively					
Joey	11-2	305	16,636	4 2	705

(Turn to Page D15)

CUSTOM BUILT FEED BINS

FEATURING:

- High quality 14 gauge steel
- Solid Welded Seams Making it Water and Rodent Proof
- Long Taper and Large Opening for Easier Flow
- Can be installed inside or outside building



Most Installations Can Be Made Without Auger!
WILL DELIVER AND INSTALL ANYWHERE

MEL'S WELDING SERVICE

R1 Kennedyville, Md. 301-348-2179

If no answer 301-348-5028

Sales and Service - Grain Equipment, Bucket Elevators, Distributors, Pipes and Accessories

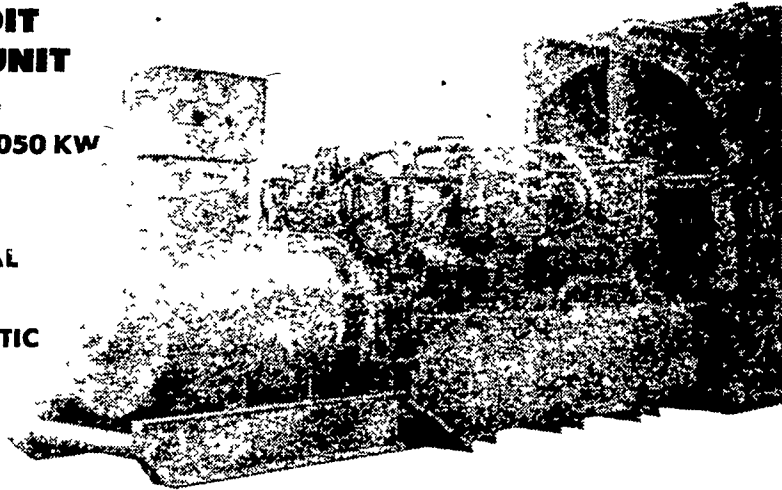
ELECTRIC GENERATOR SYSTEMS

- DAIRY FARMS • POULTRY FARMS
- FARROWING HOUSES • CONTRACTORS • ETC

DETROIT DIESEL UNIT

SIZES
60 KW to 1050 KW

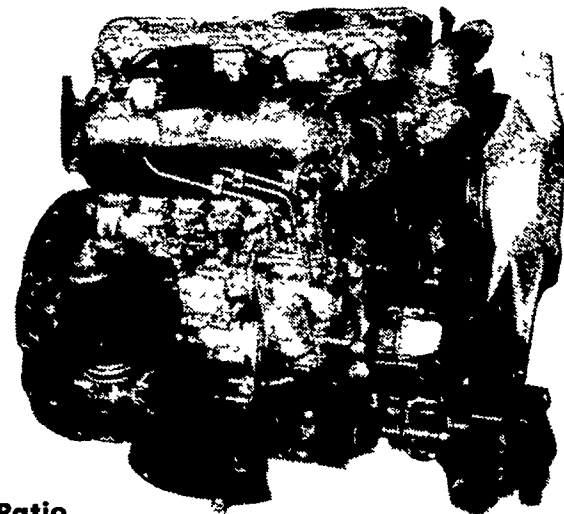
MANUAL
OR
AUTOMATIC



ISUZU DIESEL ENGINES

FOR AUTOMOTIVE
AND INDUSTRIAL
APPLICATIONS

- SIZES
- 10 KW to 60 KW
 - 18 HP to 211 HP
 - High Speed • Low Fuel Consumption
 - High Power to Weight Ratio



AUTOMOTIVE ENGINES ARE EPA APPROVED

WE BUILD L.P. GAS
GENERATOR SETS

REBUILT GENERATOR
SETS ON HAND

15
YEARS
OF
EXPERIENCE

MARTIN ELECTRIC PLANTS

ISSAC W. MARTIN, OWNER

PLEASANT VALLEY RD., RD 2 EPHRATA, PA (717) 733-7968

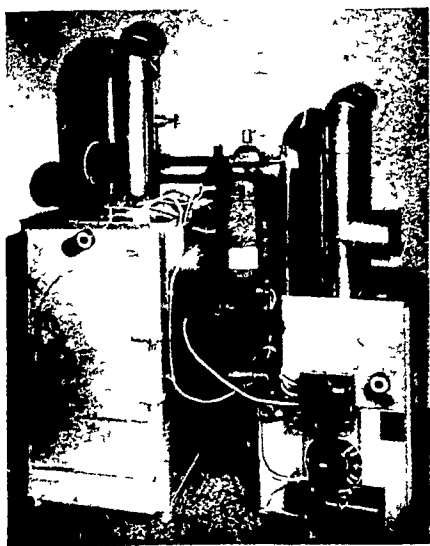
MEMCO® MW100 "THE TRUE DUAL SOLID FUEL BOILER"

First, Leading The Way

Patent #3,177,827 Tested & Approved. E T L M.

1. 50-gallon water volume for safety and efficiency.
- 2 Large fill door "17x22"
- 3 DUAL SOLID FUEL SHAKER GRATE (control front burn separate from rear), two separate shaking actions give maximum efficiency for wood, coal, or wood-coal combination burning
- 4 Removable ash pan, entire length of MW100
- 5 Wet leg design, water surrounds combustion chamber plus wet flue baffle
- 6 6GPM domestic hot water coil optional

- May be used separately or manifold to existing boiler
- Combination systems available in Oil-Gas-Electric Boilers as back up for maximum safety and efficiency



PENNDL HEARTH & HOME

123 Pennsylvania Avenue
Avondale, Pa. 19311

Telephone: 215-268-8222

Hours: Tuesday thru Friday 12 - 5 and 7 - 9

Saturday 10 - 5

Dealer Inquiries Invited

