

# Livestock market and auction news

## Indiana Auction

Homer City, Pa.

Thursday, October 23  
Report supplied by PDA

**CATTLE:** 80 Compared with last Thurs. market: Sl. steers: few Good 62.00-67.00; (one) Standard at 60.00; (one) Utility at 52.00. Sl. heifers: (couple) Choice 63.00-63.50; few Good 55.00-57.00; (one) Utility at 49.00. Sl. cows: Utility & Commercial 45.00-48.00, few 49.25-49.50; Cutters 42.00-46.50; Canner & L. Cutter 38.50-44.00; Shells down to 31.50. Sl. bullocks: few Standard 52.00-54.75; few Utility 40.75-49.75. Sl. bulls: few Yield Grade No. 1, 1200-1550 lbs. 58.25-59.25.

**FEEDER CATTLE:** Steers, few Medium Frame No. 2, 300-850 lbs. 53.00-63.00, one at 76.00. Heifers Medium Frame No. 2, 280-490 lbs. 51.00-59.00. Feeder Bulls, Medium Frame No. 2, 450-750 lbs. 49.00-55.50.

**CALVES:** 80. One Choice at 97.00; few Heavy Weights Good & Choice 190-280 lbs. 65.00-75.00; few Good 80.00-92.00; Standard & Good 90-120 lbs. 68.00-76.00; 70-90 lbs. 63.00-70.00; Utility 55-140 lbs. 54.00-63.00.

**FARM CALVES:** Hol. Bulls 85-120 lbs. 70.00-88.00; Hol. Heifers 85-125 lbs. 80.00-113.00. Beef Cross Bulls & Heifers, 75-115 lbs. 75.00-90.00.

**HOGS:** 100. Barrows and gilts steady. Few lots US No. 1-2 200-230 lbs. 50.00-50.50; No. 1-3 200-260 lbs. 47.00-48.75; No. 2-3 200-285 lbs. 45.00-47.00; No. 1-3 140-175 lbs. 41.00-44.50; Sows US No. 1-3 300-500 lbs. 43.00-47.00. Boars 34.00-37.00.

**FEEDER PIGS** 46. US No. 1-3 20-30 lbs. 5.50-13.00 per head; No. 1-3 40-55 lbs. 21.00-22.00.

**SHEEP:** 41. Woolled sl. lambs Choice 75-85 lbs. 62.50-63.50; Good 60-85 lbs. 51.00-58.00. Sl. ewes: 18.50.

## Pa. Auction Summary

Friday, October 24

Report supplied by PDA

**CATTLE:** 5681. Compared with 4304 head last week, and 6221 head a year ago. Compared with last Fri. market: Slaughter steers & heifer steady - .50 higher; Sl. cows steady - .75 lower, spots 1.00 lower; Sl. bullocks steady - 1.00 higher. Sl. steers: High Choice & Prime No. 3-4, 72.50-75.60; Choice No. 2-4 68.50-75.00; Good 62.00-68.00; Standard 56.00-63.00. Sl. heifers: Choice 63.00-68.00; Good 59.00-63.00; (few) Standard 49.00-59.00. Sl. cows: Utility & Commercial 46.00-49.75; Cutters 43.00-48.50; Canner & L. Cutter 39.00-44.00; Shells down to 30.00. Sl. bullocks: (few) Choice 64.00-70.50; Good 58.00-64.00; (few) Standard 52.00-58.00. Sl. bulls: Yield Grade No. 1, 1000-2400 lbs. 57.00-63.50; Yield Grade No. 2, 900-1600 lbs. 52.75-58.00.

**FEEDER CATTLE:** Steers, Large Frame No. 1, 300-600 lbs. 62.00-78.00; Medium Frame No. 1, 300-750 lbs. 65.00-79.00; Medium Frame No. 2 500-900 lbs. 53.00-69.00. Heifers, Medium Frame No. 1, 300-600 lbs. 52.00-63.50; Medium Frame No. 2 500-750 lbs. 50.00-59.00.

**CALVES:** 4138. Compared with 3138 head last week and 4096 head year ago. Vealers Graded Good & Choice, mostly steady - 5.00 higher, Standard & Good graded 5.00-10.00 lower. (few) Prime 118.00-124.00; Choice 95.00-110.00; Good 75.00-95.00; Standard & Good 90-120 lbs. 68.00-75.00; 70-90 lbs. 60.00-72.00; Utility 50-110 lbs. 50.00-65.00.

**FARM CALVES:** Active. Hol. Bulls 80-125 lbs. 75.00-115.00; Hol. Heifers 80-145 lbs. 80.00-201.00, mostly 120.00-185.00. Beef Cross Bulls & Heifers 75-100 lbs. 75.00-105.00.

**HOGS:** 6512. Compared with 5467 head last week and 8274 head a year ago. Barrows and gilts mostly 1.00 lower. US No. 1-2 200-240 lbs. 49.00-50.50, few to 51.50, No. 1-3 200-250 lbs. 48.00-49.75; No. 2-3 200-275 lbs. 46.00-48.00; No. 1-3 140-190 lbs. 42.00-46.00; Sows 2.00-3.00 higher. US No. 1-3 300-575 lbs. 42.00-48.00; No. 2-3 300-650 lbs. 37.00-44.00. Boars 32.00-38.00, few 43.00.

**FEEDER PIGS** 1980. Compared with 1033 head last week and 2109 a year ago. Steady - 2.00 lower. US No. 1-3 20-35 lbs. 8.00-18.00 per head; No. 1-3 35-50 lbs. 18.00-29.00; No. 1-3 50-75 lbs. 29.00-32.50.

**GRADED FEEDER PIGS** : 3898. Compared with 2419 head last week, and 4867 head a year ago. All sales by CWT. Feeder Pigs uneven, extremes 10.00 higher to 5.00 lower. US No. 1-2 20-30 lbs. 65.00-86.00, 30-40 lbs. 72.00-86.00, 40-50 lbs. 62.00-79.00, few to 87.00, 50-60 lbs. 61.00-78.00, 60-90 lbs. 50.00-66.50; 15-30 lbs. 54.00-83.00, 30-40 lbs. 50.00-77.00, 40-60 lbs. 50.00-67.00.

**SHEEP:** 933. Compared with 349 head last week and 553 head a year ago. Woolled sl. lambs mostly steady. Choice 60-115 lbs. 57.00-66.00; Good 50-100 lbs. 50.00-60.00. Sl. ewes: 15.00-27.00.

## Lancaster Weekly

(Continued from Page A2)

cows, 7 per cent bulls, 4 per cent heifers with the balance mainly feeder steers.

**SLAUGHTER STEERS:** High Choice and Prime 3-4 1150-1425 lbs. 72.25-75.00, few sales early in week 75.00-75.60; Choice Grade 2 1050-1350 lbs. 73.75-75.50, around 15 head Choice 2 and Prime 3 early part of week 75.50-77.25; Choice 2-4 950-1425 lbs. 69.50-72.50, few 72.50-73.00; high Good and low Choice 2-3

1000-1350 lbs. 66.50-69.75, Good 2-3 62.00-67.00; Good and Choice 1100-1300 lb. holsteins 59.50-63.75, few Standard 1-2 56.25-59.75.

**SLAUGHTER HEIFERS:** Choice 2-3 900-1050 lbs. 63.00-68.00; Good 2-3 850-1050 lbs. 58.25-63.75.

**COWS:** Utility and Commercial 1-3 45.50-49.50, few 49.50-52.00, Commercial 3-4 41.00-46.00, cutter 1-2 43.00-48.25, few 48.25-49.50, Canner and low Cutter 39.00-44.00.

**BULLOCKS:** Choice 1100-1350 lbs. 61.50-67.00, few 67.00-69.10; Good 1000-1300 lbs. 54.00-61.00.

**BULLS:** Yield Grade 1 1400-1900 lbs. 58.50-61.50, few 62.00-66.00; Yield Grade 2 1000-1800 lbs. 54.00-60.00.

**VEAL CALVES:** Choice and Prime vealers mostly steady, high Good and low Choice weak to 4.00 lower, slaughter calves 2.00-4.00 lower. Demand fair for calves returned to farm.

**VEALERS:** Prime 250-360 lbs. 118.00-124.00, couple 125.00-128.00; Choice 130-300 lbs. 95.00-110.00, few 110.00-118.00; high Good and low Choice 125-275 lbs. 75.00-

90.00, few 90.00-99.00, 80-115 lbs. 70.00-90.00, 60-80 lbs. 57.00-72.00.

**SLAUGHTER CALVES:** Choice 280-420 lbs. 55.00-64.00, few Choice 64.00-75.00; Good 250-375 lbs. 48.00-56.00.

**RETURNED TO FARM:**

Bulk 80-120 lbs. holstein heifers 115.00-145.00, 90 head 170.00-193.00, several 80-100 lbs. 72.00-90.00; bulk 85-115 lbs. holstein bulls 98.00-110.00, 31 head 120-125 lbs. 91.00, few 85-95 lbs. 76.00-90.00.

## Penn National

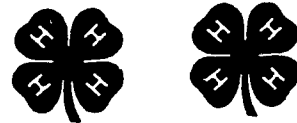
This makes the thirty-ninth ribbon that's been pinned on the mare since Lipensky took her on the show road this season. Seventeen-year-old Lipensky is a veteran to the show ring, too — this is her fourth year of showing at Penn National.

Melanie is joined at the big show by her 14-year-old sister Marta Lipensky who rides her Morgan gelding, Shieling's Ginger. And keeping a watchful eye on both the girls is their

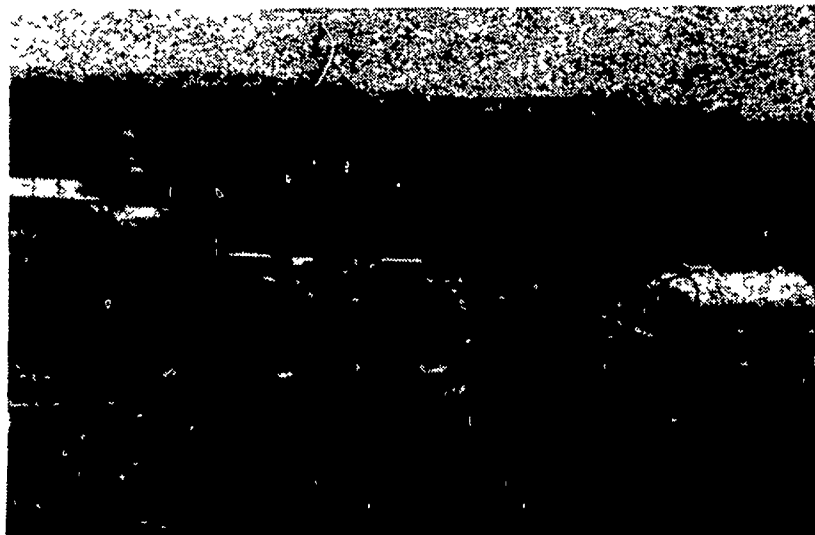
mother, Ann. Ann not only serves as guardian of her daughters but as coach and cheering section too. She points out that riding and showing is a family affair for them all. She, herself, has been riding since 1939 and competed at Penn National when she was a child.

The ribbon here for A Lovely Decision adds to her already prestigious show career. This year alone she was tagged Champion Under

(Turn to Page A39)



## SAVE: ENERGY! TIME! MONEY!



Here's Something That Should Be Part Of **YOUR** Program This Fall: **TWO** Jobs In **ONE** Operation

- ★ Efficient Glenco Chisel Plowing
- ★ Nitrogen Application with Clod-flow Ammonia Custom Applied By The **PROS**
- ★ Leaves You Free For Other Work.
- ★ Allows You To Farm More Acres With No More Expensive Equipment Investment.
- ★ Equipped To Apply N-Serv.

**Alfalfa** - Topdress again after last cutting. Available K aids in overwintering.

**Alfalfa** - The **BEST** time for alfalfa weed control. Let our sales people book your alfalfa weed spraying **NOW!**

**TRY US — We Have The Product and The Knowledge**

AUTHORIZED DISTRIBUTOR FOR PRAIRIE STREAM FARMS SEED CORN

AUTHORIZED DEALER FOR ASGROW SOYBEANS



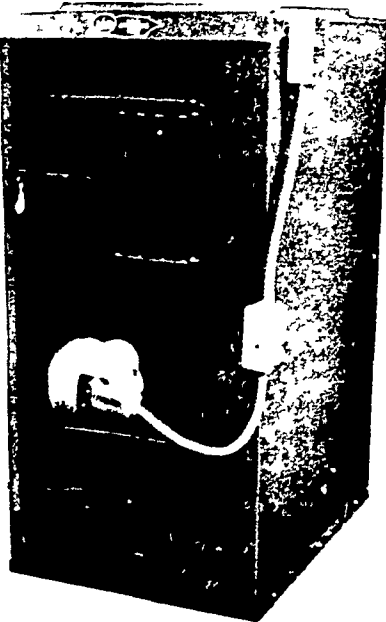
**ORGANIC PLANT FOOD CO.**  
2313 Norman Rd., Lancaster, PA  
Ph: (717) 397-5152

**\$750<sup>00</sup> IN STOCK NOW**

CONVERT YOUR PRESENT WARM AIR HEATING SYSTEM TO **ECONO-FUEL-MASTER**



Burns either Coal (America's most plentiful heating fuel) or Wood (a renewable energy source)



- FEATURES INCLUDE:**
- Automatically-controlled combustion
  - Airtight, double-pass flue gas passage
  - Firebrick-lined combustion chamber
  - Cast iron grates
  - Heavy-gauge steel heat exchanger
  - 100% steel cabinet
  - Baked enamel finish
  - Easily-removed ash container
  - Factory-set Limit Switch to eliminate overheating
  - Forced draft blower for even, efficient combustion
  - Operates with or without electricity
  - Made in U.S.A.
- Optional Feature: Automatic Air control damper for coal firing

**HOWARD E. GROFF CO.**

Fuel Oil, Gasoline, and Coal  
111 E. State Street, Quarryville, PA 17566  
Phone: 717-786-2166