

# Builders and Designers of The Best In Hog Confinement Units

OUR BUILDINGS ARE COVERED WITH:



REYNOLDS ALUMINUM

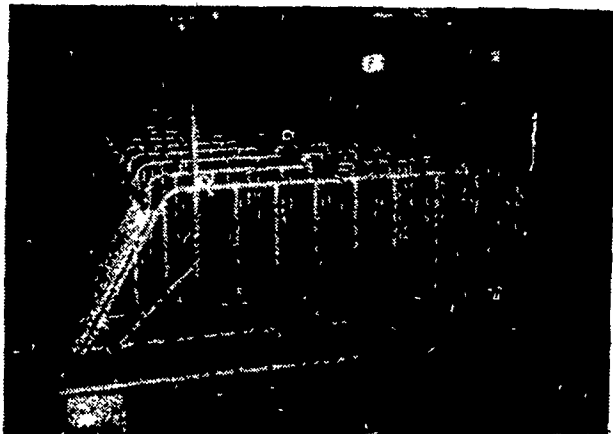
LET US SHOW YOU ON THE FARM HOG UNITS

- GESTATION and FARROWING
- FINISHING

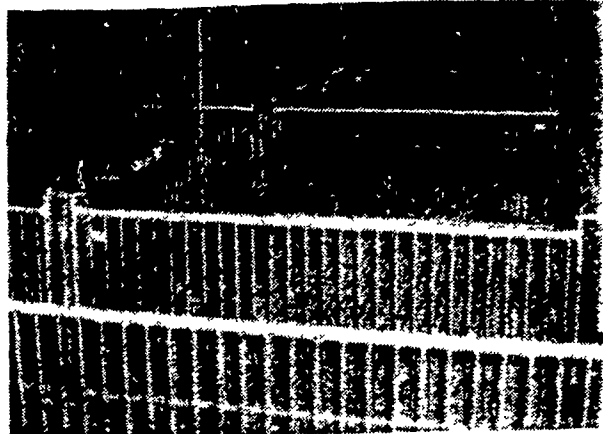


FARROWING UNIT

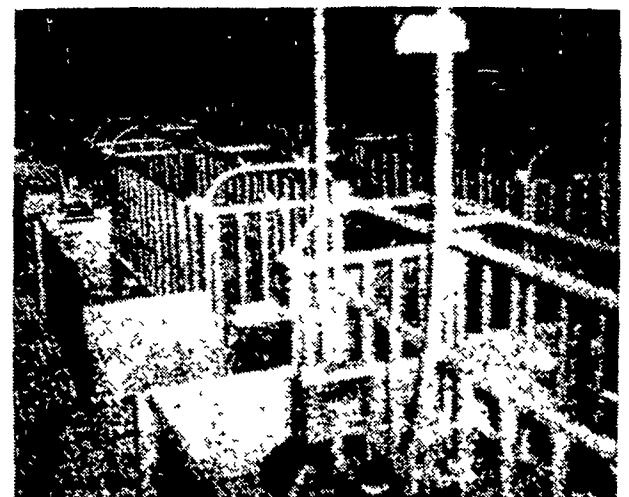
## Rohn Agri Products



GESTATION

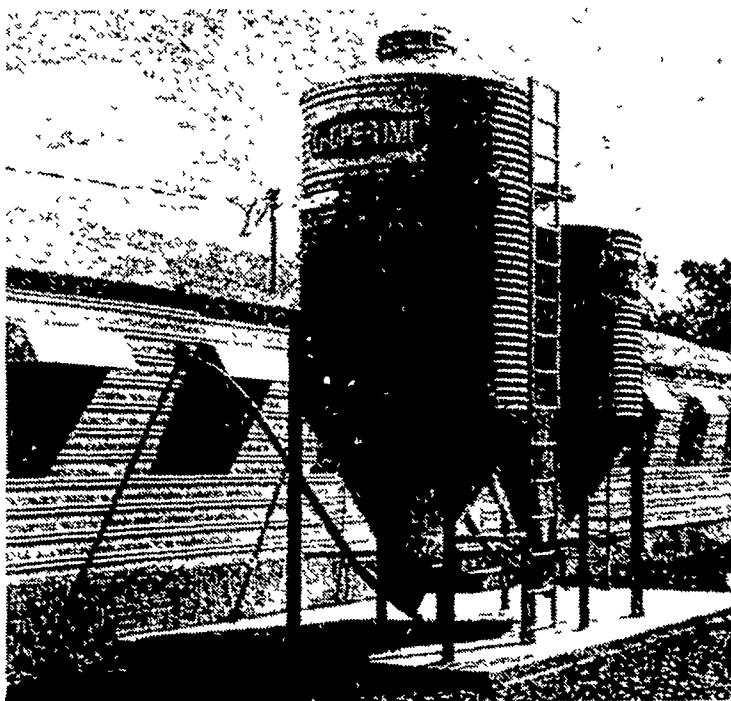


NURSERY

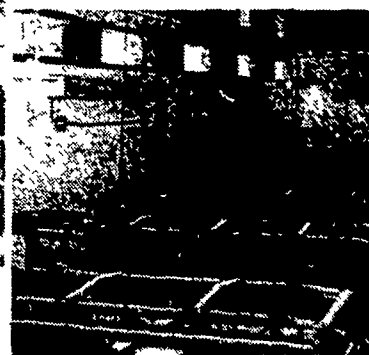
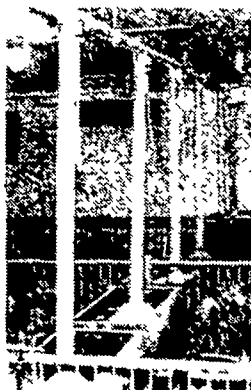


FARROWING

the systems that make hogs **SUPER THRIFTY ...SUPER PROFITABLE...SUPER EASY TO RAISE**



COMPLETELY GALVANIZED BINS



### ventilation . . .

Keep animals comfortable, and you keep them far more thrifty and far more profitable. Chore-Time's Advanced Air Systems approach combines controlled air inlets with the finest variable speed and single speed fans and other components. They're fitted to your specific building. The result is year-around, day-in and day-out comfort for your animals.

### sow feeding . . .

Taking gestating sows out of the "maddening crowd" and putting them into their own individual stalls with a Chore-Time feeding system is the way to bigger litters, better litters, more litters from each sow, and more money for you to keep. Farmers can get back \$16 or more for every dollar invested in a Chore-Time Sow Feeding System.



DESIGNERS AND BUILDERS OF SYSTEMS  
RD 4 EPHRATA, PA 17522  
PHONE 717-354-4271



CATTLE - HOG - POULTRY EQUIPMENT  
2754 CREEK HILL RD., LEOLA, PA 17540  
PHONE 717-656-4151