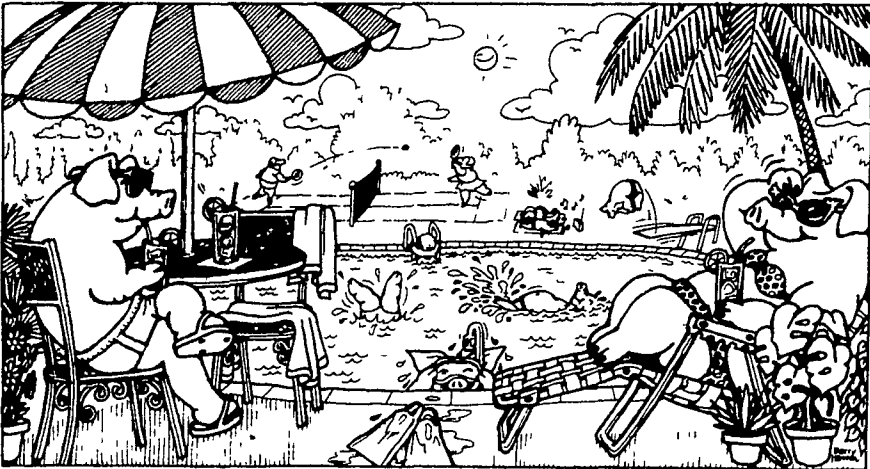


ARE YOU HAVING PROBLEMS WITH SOLIDS AND ODORS IN YOUR MANURE PIT? Try Micro-Life — It's Not A Chemical!

IF A CHEMICAL SALESMAN PROMISES A LAGOON LIKE THIS,



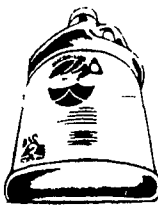
HE'S FULL OF HOGWASH.

CHEMICALS ARE ONLY A TEMPORARY SOLUTION TO A LONG-TERM PROBLEM
No matter how many chemicals you try no matter how many high pressure sales pitches you put up with you won't end up with hog heaven. Because chemicals wear out quickly. They can't break up solids and lower odors on a long term basis. And besides all that they're very very expensive considering how little they do.

OUR HOG DIVISION HAS AN ALTERNATIVE TO CHEMICALS AN ALTERNATIVE THAT WORKS THE WAY NATURE DOES
We have a healthy live red purple bacteria culture (not an enzyme!) that loves what you and your hogs don't. It thrives and grows in numbers breaking down solids into a harmless fertilizer slurry that's 1 1/2 times the normal strength. While it controls those offensive odors. And it does it all with a simple program. A program that many agriculture editorials have praised. And

that literally thousands of agri businessmen like you swear by. If you want the names of those in your area we'll be glad to supply them. You see our customers are our sales force. That's because our product works. And they'll tell you so.

IF YOU'RE INTERESTED, CALL US NOW.



MICRO-LIFE

USDA Approved Dept. O
The Ecological Chemical Co
21 Filmore Place Freeport New York 11520

See Page A11 For 2 Day HARVEST SALE

EMHERR EQUIPMENT, INC.

R.D. 1, Rt. 272 South, Herrville Rd., Willow Street, PA.
Phone: 717-464-3321

Who farms the Eisenhower farm?

GETTYSBURG — The Eisenhower tour bus turns in between the two brick pillars and a vacated guard's booth at the main entrance to cruise slowly down the long paved driveway between white board fences.

Inside the bus, visitors to the Eisenhower National Historical Site finish listening to a tape of the life and history of the 34th President of the United States and how the Five Star General loved his Gettysburg Farm.

Peering through the bus windows, just prior to disembarking to stroll through the gorgeous home of Ike and Mamie, visitors

see pastures where black Aberdeen Angus graze lazily under the Summer sun. Crop fields are stripped with alternating ribbons of corn, soybeans, and hay.

As one guest prepares to alight from the steps of the converted school bus, she is heard to say, "Does anybody know, are those Ike's cows?"

In response to her query, an accommodating tour guide quickly replied the land was being leased by a local farmer and those were his cattle.

To most visitors at the Eisenhower farm, that answer would be sufficient.

But not so for the farmers in the crowd.

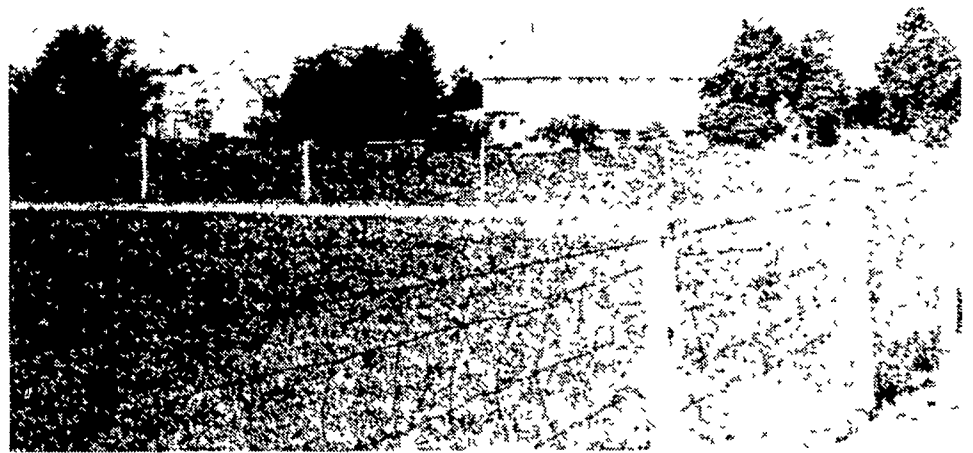
Who farms the Eisenhower farms?

The stewardship and care of our past President's farm has been entrusted to local farmer, Bill Leonard.

Leonard, who lives across the fields from the Eisenhower Farm on another historical farm near Gettysburg, adds the 500 acres from the Eisenhower farm to an additional 700 acres of cropland that he farms.

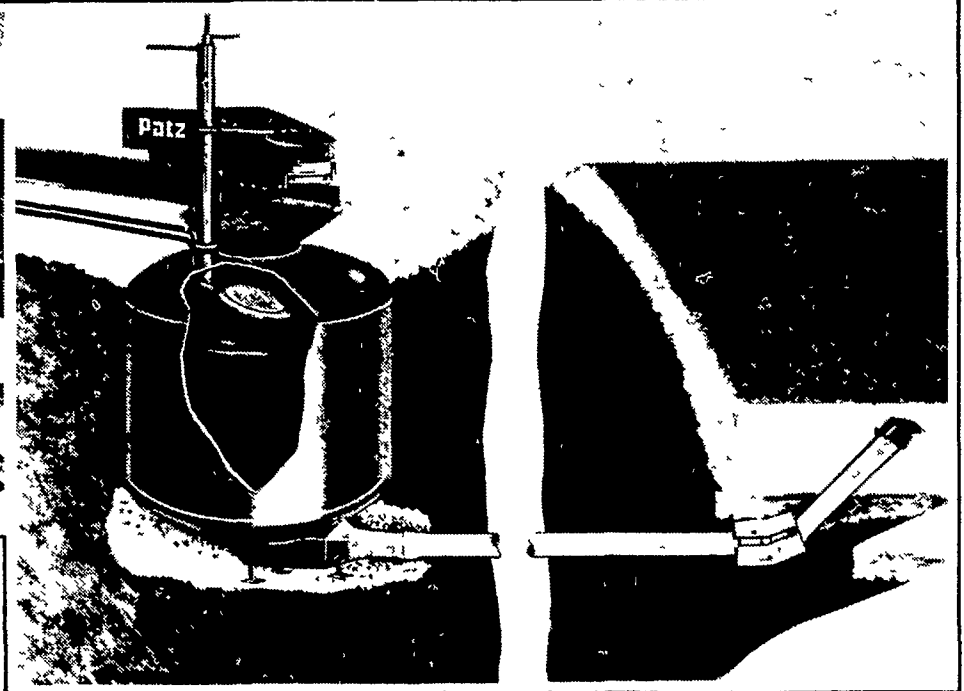
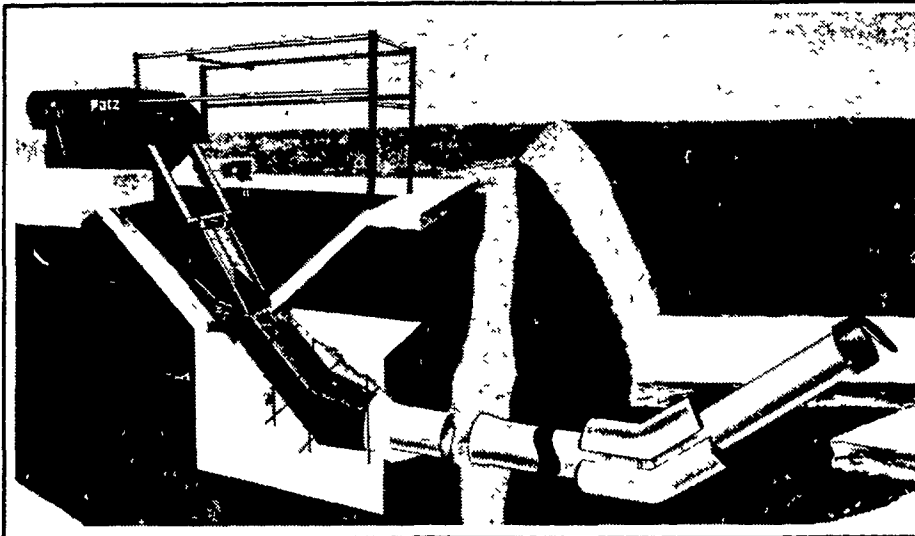
Farming over 1000 acres would be a full-time job for almost any farmer. But for

(Turn to Page B6)



Manicured pastures surround the Eisenhowers' Gettysburg homestead.

THE PATZ SOLUTION: Controlled Manure Management



Patz Slurry Manure Pump (left photo) and Compressed Air Manure Mover (above photo)



slurry with fine-cut bedding. Both the plunger and plunger sleeve can be serviced without concrete breakup.

The hopper loads by gutter cleaner or scraper. And a flapper valve at the end of the 12-inch PVC pipe in the storage facility prevents manure backup.

The Model 200 compressed air manure mover features a manually-operated hatch cover and a one-way valve at the bottom of the underground tank, so wear is minimal. An air compressor provides air pressure to agitate manure in the 1,700 U.S. gallon collection tank and then air pressure moves manure to your storage facility.

Want to know more? Your Patz dealer will show you how to make daily manure handling push-button easy with Patz.

More farmers are turning to controlled manure management to save valuable nutrients and to make manure handling easier. And Patz has the equipment to help you move, store, spread and inject manure on your farm.

The Model 100 manure pump handles free-flowing manure and

Patz Pound, Wisconsin 54161 U.S.A.
Performance Strong as Steel