

Farm Credit to open new headquarters Monday

SPARKS, Md. — The Farm Credit Banks of Baltimore are relocating on Monday, October 20, to a newly constructed headquarters office on York Road, north of Hunt Valley near Sparks, Maryland, according to an announcement by Bank Officials.

The Banks were closed on Friday, for the move and will reopen on Monday, October 20 in the new building.

Gene L. Swackhamer, president of the Banks, said the opening of the new building culminates a three year project which began with a renovation study of the present facility. He said growth of the Banks and the need for additional services to manage and support efficiently their \$2.4 billion loan portfolio were primary reasons for the study and the eventual relocation decision.

Swackhamer reported cost of the 90,000 square foot building and furnishings to be about \$8.8 million.

The new Bank utilizes contemporary design and an open office concept throughout much of its area and features a glass roofed two-story courtyard and interior garden/atrium. Extensive interior landscaping was performed in the atrium to create an efficient and pleasant work

environment, according to Bank officials.

McCormick Properties, Inc., design/builders constructed the building utilizing the architectural and engineering services of Gaudreau, Inc.

The regional office of the Farm Credit Banks has been located at the corner of St.

Paul and 24th Streets in Baltimore since 1924.

The Banks and affiliated Federal Land Bank and Production Credit Associations located across Maryland, Pennsylvania, Virginia, West Virginia, Delaware and Puerto Rico provided short and long term financing to the agricultural sector.

Perry farmers form adult group

NEW BLOOMFIELD — Forty farmers in Greenwood School District, Perry County, gathered for the first time on October 9 to organize an adult farmer group for the purpose of adult education.

Judith Menihan, Director of Research for the Pennsylvania Farmers Association was on hand to explain farm truck regulations and how new legislation will affect farm business.

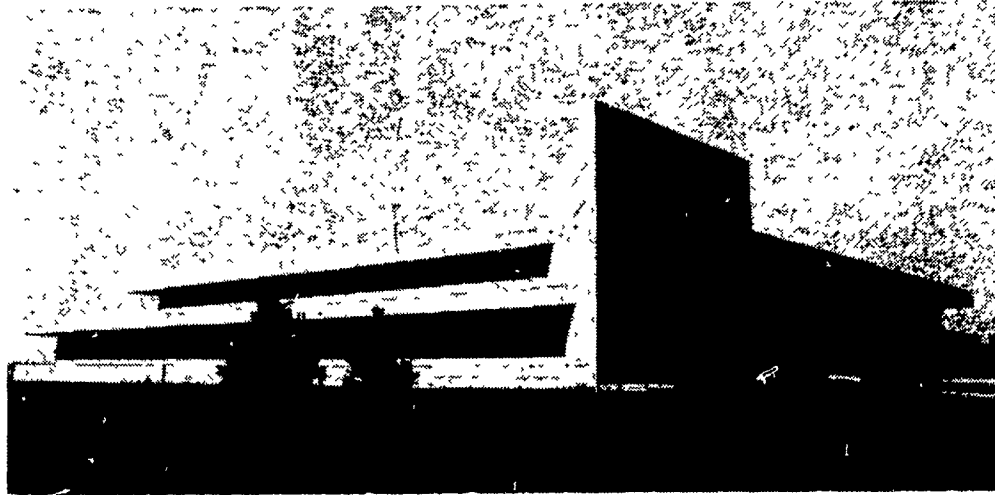
Merril Brofee, local dairy farmer and group spokesman, said "Farmers in our area can benefit by getting together to learn about new developments in agriculture from many resource people available to us. We can also benefit by comparing notes and our own successes and failures."

The group will meet again on November 13 at the Greenwood High School. They will participate in a program on no-till small grains put on by representatives from chemical companies, machinery companies and local farmers.

Brofee indicated if interest in the group continued it would organize formally at the November meeting with the election of officers.

A December 11 meeting is also being scheduled on marketing of farm products.

JOIN
4H



The Farm Credit Banks of Baltimore's new building, on York Road north of Hunt Valley near Sparks, Maryland, is a contemporary structure featuring a central court and interior garden/atrium. The 90,000 square feet of workspace incorporates a colorful open office landscaping concept to provide for future expansion. Cost of the building and furnishings is \$8.8 million.



A special message to farmers who appreciate the difference...

PRICE vs. VALUE in liquid fertilizer

When the first thing a fertilizer salesman wants to talk about is a "bargain basement price," you can be pretty sure that's all he really has to offer

We're cost-sensitive at NA-CHURS, too. But because we're dedicated to selling quality, we like to discuss value — at a fair price. Here's what NA-CHURS has to offer

Highest quality product. Remember, first, that NA-CHURS liquid fertilizer is a precisely-formulated, complete liquid plant food — not just a blend of raw materials. Just because another fertilizer may have the same basic NPK ratio, does not make it the "same" fertilizer. That's because NA-CHURS starts with only the highest-quality raw materials. These are formulated into a solution that won't separate and settle out like many poor-quality, suspension liquids. That's why NA-CHURS stores safely over winter, giving you the advantage of lower fall prices and planting time application as early as you're ready.

Extra service — at no extra cost. NA-CHURS customers know that what comes with a fertilizer is just as important as what goes in it. The NA-CHURS Program includes year 'round extra services — all at no extra cost

Composite soil samples are taken and a written fertility recommendation for each field is supplied by NA-CHURS agronomists. No charge!

Farm storage tanks are supplied. No charge!

Delivery is arranged at your convenience. No charge!

Your NA-CHURS Representative assists with installation and calibration of liquid equipment. No charge!

Follow-up service. Your NA-CHURS man is on hand throughout the growing season — to help your crops reach full yield potential.

Special credit terms and discounts are an important part of the NA-CHURS program. You help us plan for production, and we'll help you save money.

These are just some of the extras that we call SERVICE — to help you achieve optimum yields and after-cost profits. That's what the NA-CHURS program is all about. See your NA-CHURS man and talk about the real differences between price and value.



NA-CHURS
PLANT FOOD COMPANY

Home Office 421 Leader Street
Marion, Ohio 43302

CONTACT A NA-CHURS REPRESENTATIVE:

JOSEPH SEGUINE JR. Phone 215-536-2796 LARRY REAM Phone 814-395-5030 EARL KAUFFMAN Phone 717-834-5919

HENRY OWINGS
Phone 301-848-9224

BURTON W. LAMENS
Phone 717-362-9033

LN-80F-2

NA-CHURS and  are trademarks of the NA-CHURS Plant Food Company

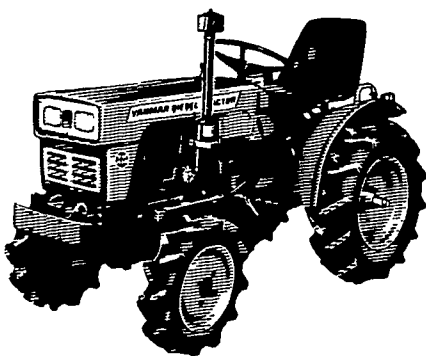
NOW YOU CAN BUY THAT GREEN YANMAR TRACTOR

NO PAYMENTS or INTEREST UNTIL MARCH 1, 1981



THE FOLLOWING MODELS ON SALE

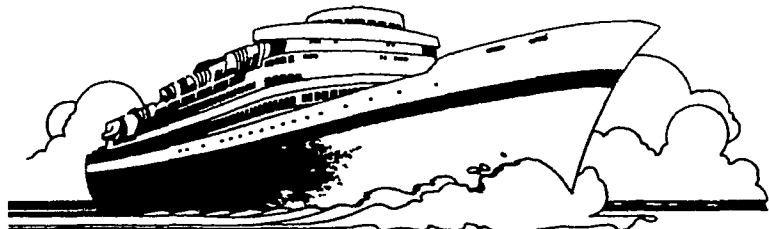
	List	Special
Mod. 135 - Turf, 13 HP	\$4275	*3375
Mod. 135 - 4 WD, AG, 13 HP	\$4585	*3685
Mod. 135 - 4 WD, Turf, 13 HP	\$4695	*3795
Mod. 155 - Turf, 15 HP	\$4712	*3712
Mod. 155 - 4 WD, Ag, 15 HP	\$4995	*3995
Mod. 155 - 4 WD, Turf, 15 HP	\$5200	*4200
Mod. 240 - Turf, 24 HP	\$6090	*4490



	List	Special
Mod. 240 - 4 WD, Ag, 24 HP	\$6795	*5495
Mod. 330 - 4 WD, Ag, 33 HP, Live PTO, Draft Control	\$9320	*7120

We're ready to deal, so come in today and pick up a compact tractor at a compact price

ACT NOW - SALE ON CURRENT STOCK ONLY



Register to win a 7 day cruise to the Caribbean.

When you come in to make a deal, be sure to register for Yanmar's "Love Boat" style Caribbean cruise. You may win a 7 day, all expenses paid cruise for two, with ports of call in San Juan and St. Thomas. Simply fill out an official entry form and deposit with us. No purchase necessary.

Complete Sweepstakes Rules available at participating dealerships. Void where prohibited.

"SERVICE IS OUR MOTTO"

LAWN CARE OF PA.

SALES & SERVICE

Martindale, PA 17549
1 Mile North of Martindale
on Grist Mill Road
PH: 215-445-4541

Mon., Tues., Thurs., Fri. 8-8
Wed. 8-5, Sat. 8-2
"A little out of the way...
but a lot less to pay"