

Public Sales Register

Closing Date - Monday, 5:00 P.M.
of each week's publication

MON. OCT 27 & TUES. OCT. 28 - 10:00 Public Sale of Antiques, Furniture, Cars, Equipment, Held at the Historical Seven Stars Inn, on Rt 23, 5 miles west of Valley Forge, Exit 24 of Penn Turnpike midway between Rt 113 & Rt 100. Sale by Mr. & Mrs. Benjamin Pupek. Clay C. Hess & Richard J. Moyer Auctioneers.

MON. OCT 27 - 11:30 A.M. Public Sale of Dairy. Alex Plushanski Owner. Located on Asbury Rd., 1/2 mile off Rt. 31, 3 miles south of Washington, NJ 2 miles east of Asbury, NJ. Col Fred R Daniel Auctioneers, Inc

WED. OCT 29 - Show 9:00 A.M. Sale 12:00 P.M. Annual Dairy Show and Sale held at the New Holland Sales Stables, New Holland, PA.

WED. OCT. 29 - Annual Cow Show and Sale, Judging at 9 A.M., Sale 12 Noon at New Holland Sales Stables

THURS OCT 30 - 11:00 A.M. Milking Herd Dispersal, on the former King Farm Located on the Ballenger Creek Rd., 12 miles from Frederick, MD. Take the Ballenger Creek Rd. exit at Frederick or turn off Rt 15 at Bastford Rd and follow sale signs Mr. & Mrs. Rodger P. Doody, Owners Remsburg Sale Service managers

THURS OCT 30 - 10:00 P.M. Ham Processing Plant and Equipment, 575 Bellevue Rd., Newark, DE Rudnick & Matas Auctioneers

THURS OCT 30 - 9:00 A.M. Public Sale of Farm Machinery, Located in Cumberland Co., 4 miles south of Newville at the Newville exit of I-81 go south 1/4 mile on Rt 233 to Cornman Rd, turn left, sale at first farm on left Thelma F Gettle Estate Dean Shull Auctioneer

FRI OCT 31 - Clean-up sale, all kind of cattle (900 head) South Branch Stockyards, Inc., Moorefield, WV

FRI OCT 31 & SAT. NOV 1 - Public Sale of Carriages, Sleighs and Antiques Held at Martin's Sales Pavilion, Corner of 340 and New Holland Rd., 2 miles east of Intercourse, Lancaster Co., PA. Auction limited to 200 horse drawn carriages and sleighs. Conducted by Martin Auctioneers, Box 71, Blue Ball, PA 17506, 717-354-7006 or 354-9530

FRI. OCT 31 - 1:30 P.M. Pocahontas Producers State Graded Feeder Calf and Cattle Sale Just off US 219, one mile north of Marlinton, WV

FRI OCT. 31 - 11:00 A.M. Public Sale of Valuable PA Dairy Farm Located in Liberty Township, Adams Co., Pa. located along both sides of Tract Road-Legislative Route 01001 (between Wenschoff Road T-311 and Legislative Route 01052) 4 miles NW of PA Rt 16 or Md Rt. 140 West Emmitsburg, MD and 9 miles SW of Gettysburg, Pa Auction signs posted. M.L Angelaras, Owner Trout Auctioneers

FRI OCT 31 - 11:00 A.M. Rockview-Acres Holstein Dispersal. Held at the farm in Cumberland Co., 4 miles NE of Shippensburg, PA on Rt 11, turn southeast on Kline Rd toward Lees Cross Roads to first farm, 16 miles SW of Carlisle, PA on Rt 11, John L Ebersole Owner, Nevin Martin and Melvin Sensenig Auctioneers

NOVEMBER

SAT NOV 1 - 10:00 A.M. Public Sale of Approx 20-25 tractors Located from Rt 11 at Inwood, WV, turn east on Rt 51, travel 3 miles to Roeder's

Market (Formerly Haines', turn right, 2 mile to sale OR from Charles Town, WV, take Rt 51 west, go approx 8 miles to Roeder's, turn left, 2 mile to sale Edgar A Bohrer Sale manager

SAT NOV 1 - 9:00 A.M. Public Sale of Antiques and Collectibles, Misc & Household Items. Located 4 miles west of Pillow, PA, 6 miles east of Rt 147, 4 miles east of Malta Watch for sale signs along Rt 147 day of sale Nora I Lenker Owner Dockey & Dockey Auctioneers

SAT NOV. 1 - 10:00 A.M. Public Sale of Farm Equipment, Tools, Antiques, Household Goods and Truck, Located 114 E Race St. (2 miles north of Litz along 501, turn right on Snyder Hill Rd, turn left on Union House Rd to Race St) Warwick Twp, PA Terms by Carl M Petticofer T Glenn Horst Auctioneer

SAT NOV 1 - 10:00 A.M. Public Sale of Plumbing and Heating Equipment, Shop and wood working equipment, Mini motor home Located 19 miles south of Lancaster along 272 at Village of Hensel or 4 miles north of Wakefield along 272, Sale by Walker Brothers Lloyd H Kreider, Randall Kline and Gary L Shirk Auctioneers

SAT NOV 1 - 1:30 P.M. Feeder Pig Sale. Located 1 mile south of Lebanon, Take Rt 897 from Schaefferstown, at Iona turn on Mine Rd, turn left at Fox Rd (at Newmaster Store) Alvin Martin Owner Merle Eberly auctioneer

SAT NOV 1 - Sale of Complete Potato Farm for Mr & Mrs George Gozelski Warsaw, Wyoming Co., NY Hermitage Rd 4 miles north off Rt 78 at Hermitage, NY or 3 miles south of Rt 20-A just west of Warsaw Sale by Pirrung Auctioneers

SAT NOV 1 - 10:00 A.M. Public Sale of Milking Herd Dispersal, Farm Equipment, Feed, Car, Located in Carroll Co, MD 5 miles southeast of Taneytown along Travantion Rd, turn right on Clear View Rd to first farm Mr & Mrs Elwood A Myers, Owners Calvin L Amoss Auctioneer

LEBANON

Electric Supply Co.

PUBLIC AUCTION

ON OUR PREMISES

SATURDAY, OCTOBER 25

STARTING AT 12:00 NOON

To be held at: Lebanon Electric Supply Co., 1503 Quentin Road, Lebanon, Pa.

Located next to Lebanon Plaza Shopping Center.

ELECTRICAL SUPPLIES

Scratched, Dented, Discontinued, and Overstock.

LIGHTING FIXTURES

Outdoor & Indoor, Chandeliers, Wall Brackets, Swags and Others.

BATH CABINETS

INTERCOM COMPONENTS

FAN SHUTTERS

TERMS: STRICTLY CASH - ALL SALES FINAL.

Auctioneer:
HARRY H. BACHMAN
(717) 867-1809

Food and Refreshments By:

TONY'S LUNCHWAGON

Member Lebanon and Lebanon County Electrical Association
Member Lebanon County Home Builders Association

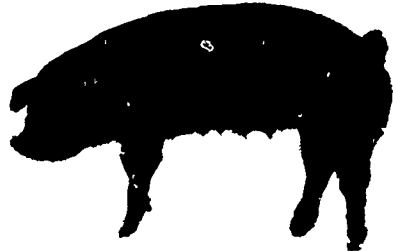
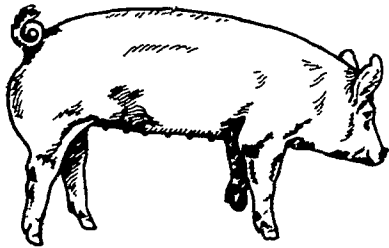
Lawrence, Leon and Thomas Arnold
16th PRODUCTION

SALE

Yorkshires

OF

Durocs



AUCTIONEER, Harry Bachman, Annville, Pa.

40 BRED GILTS

(All gilts are hand mated)

Registered Yorkshire-Registered Duroc
PICK DUE DATES TO FIT YOUR FARROWING SCHEDULE
40 BOARS

25 Yorkshire - 15 Duroc

Seven to eight months old, ready for heavy service.
Feeding efficiency Test station information available

42 OPEN GILTS (Ready to breed)

17 Registered Yorkshire - 15 Registered Duroc
10 Crossbred

All animals vaccinated for Erysipelas & Lepto. Negative tested for Brucellosis & Pseudorabies

Friday Evening

November 7, 1980, 6:30 P.M.

SALE TO BE HELD AT THE

Lebanon Area Fairgrounds

(CORNWALL & EVERGREEN ROADS 1 1/2 MILES

SOUTH OF)

Lebanon, PA

CATALOGUES AVAILABLE NOV. 1, WRITE TO
LEON L. ARNOLD R.D. 7, Box 705, LEBANON, PA 17042
OR CALL 717-273-5880

NI-CRETE FARMS COMPLETE DISPERSAL TUESDAY, OCTOBER 28

CHAMBERSBURG, PA.

Ni-Crete Farm is located on the south edge of Chambersburg. Going south on U.S. 11, turn right on Industrial Drive, one mile to Hollywell Ave. turn left to farm. About 40 miles southwest of Harrisburg and 18 miles north of Hagerstown, Md.

90 REGISTERED HOLSTEINS
(37 Cows - 36 Bred Heifers -
17 Yrlgs. & Calves)

The Ni-Crete Milking Herd Dispersal was held on April, 1979 and this offering is made up of the heifers retained and are out of the cows sold

All tested for immediate interstate shipment Exam for Preg
DAUGHTERS OF THESE FAMOUS SIRES SELL!!

8 by Astronaut - 5 by Glendell - 4 by Elevation - 3 by Milestone - 5 by Pear Comet

3 by Orbit - 3 by Northern Prince - 3 by Capsule - 4 by Marquis King - Jerry, Magnet, Complete - 3 by Startrek and others

GOOD SERVICE SIRES USED!!

11 bred to Carlin Bell - 9 to Bootmik - 9 to Bunyard Moneymaker - 4 to Creek

3 to Char-Sam - Glen Valley Star, Pacemaker, 2 to Astronaut - 2 to Jerry 12 to Ni-Crete Bessor Astro Tim - 3 to Arlinda Fond Master - 2 to Milestone and others

GREAT RESULTS FROM FIRST CLASSIFICATION!!

7 are "VG" to 87 pts., 5 at 2 yrs -- 15 "GP" with 12 at 2 yrs. - 8 "G" all first calf

2 are "F" at 2 yrs

Daughters of cows with records of up to 1228-lbs fat and 28,230 Milk sell

Daughters of cows that sold for \$9400 and \$6600 Sell The breeding is there

HERD IS ON DHIA AND ARE DOING WELL WITH PROJECTIONS OF UP TO 19,000- MILK at 2 yrs

MAKE YOUR PLANS NOW TO ATTEND AND BUY FROM THIS COMPLETE DISPERSAL!!

Sale starts 11 A.M.

Lunch Available

Catalogs

Under Cover.

T.K. NITTERHOUSE

Owner,

R.D. 6

Chambersburg, Pa.

R AUSTIN BACKUS INC
Sales Mgrs & Auctioneers
Mexico NY

PENNA HOL ASSN
839-Benier Pike
State College, Pa

GEORGE CASHELL
Farm Mgr
717-264-8259