

Farmers' association adopts resolutions

Lancaster Farming, Saturday, October 11, 1980-B9

BY LAUREL SCHAEFFER
Staff Correspondent

WYOMISSING — Approximately 150 members of the Berks County Farmers' Association gathered at the Sheraton Berkshire Inn, here, on October 3rd to elect five board members and vote on resolutions for policy development.

Guest speaker of the affair was State Director Arthur Hershey. Hershey briefly noted that the state association had an overall membership gain of about six percent and that many young farmers are being more active within the organization. He commended Berks County for being the only county in the state to achieve seven stars for various programs sponsored by the county association.

Karen Sattazahn, Berks County Dairy Princess, addressed the organization and thanked them for their support of the dairy pageant. Karen also described some of her recent activities and encouraged everyone to contact her if they would like her to appear at a function on behalf of the Berks County Dairy Farmers Association.

Bruce Latshaw, an active 4-H and FFA member described the three-day youth conference he and another

county youth, Laura Miller, attended as sponsors of the County Women's Committee. President Jack Kooker thanked the association for giving he and his wife the opportunity to attend the National Farm Bureau Convention last year, noting that it was "quite an experience."

County Board Member Roy Christman, discussed the up coming Farm-City Tour sponsored for the past six years by the Berks County Farmers' Association. He noted that three county farms have participated in the program each year; opening their doors to the public for two days each fall to build a better understanding between themselves and their urban neighbors. These participants are: Dan-Vel Farms, Richland; Way-Har Farms, Bernville; and Ro-Ria Farms, Hamburg. Christman noted the popularity of the program as evidenced by the attendance of 8,500 visitors hosted during last year's tour. This year the committee is trying to get a horse farm on the program of farms to visit.

Resolutions that were supported by the county members during the meeting included a recommendation that a combination of locally levied

earned income tax and property tax for the purpose of school finance be implemented.

Also recommended was the following: that the legislature amend the criminal code so that judges have a free hand in meeting stiffer sentences to repeat offenders; that the State Bureau of Animal Health be encouraged to make a strong effort to communicate to the veterinary profession any pertinent information regarding new disease outbreaks and their treatment such as a functioning "hotline", and that they return to the old meat grading system of the U.S.D.A. as prime, choice, good, etc.

Agricultural imports entering the country should meet the following requirements: 1. If subsidized by any country, equal countervailing duty should apply. 2. Meet the U.S. requirements applied against farmers such as safety, health, and FDA. 3. Share promotion, market development, and research costs.

More recommendations were that: the USDA budget should not be distorted by the costs of the Food Stamp Program; farmers should have greater representation on the DER Water

Resources Policy Advisory Committee; PennDOT should be more expedient in opening secondary roads; they support the development of alternate energy sources such as gasohol, wind power, hydro-electric power to help make us energy self-sufficient and generate greater utilization of our own commodities; legislation is enacted permitting operators of farm distilleries to store, transport, and sell excess alcohol under sliding scale fee system; more emphasis be put on research by USDA to improve crop yields and develop better yielding varieties; PFA support the right of the individual for use of water in connection with property rights, including management of that water for reasonable and beneficial use; antibiotic tolerance in milk be set at .03 ppm so that when antibiotics are found, a fine be imposed and no good milk dumped, yearly as follows; 1st offense - 1/2 value; 2nd offense - total value; 3rd offense - shut off.

Other suggestions were that Safemark carry such items in safety devices as respirators, gas masks, ear plugs, and other protective items which are required by law but not always available in all areas; all factions of the dairy industry support the United Dairy Industry Association for the REAL seal on all dairy products that are made from the real thing; component pricing of milk be pursued on a

national level; calfhood vaccination policy be changed to all female calves; the milk security fund be fortified with adequate funding; non-vaccinated animals not be eligible for indemnities bore after January 1, 1981, the

1980 Policy on Mushroom Imports be reemphasized and add the following - Imports of processed mushrooms be limited to 42 percent of domestic processed mushroom consumption.

NPPC gears up for October push

DES MOINES, Ia. — The National Pork Producers Council, the nation's largest commodity organization, is gearing up for its second annual October Pork Showcase promotion.

This special newspaper/supermarket campaign, which last year helped make October the biggest fresh pork consumption month in history, will appear as a newspaper supplement in 60 major metropolitan areas with a projected market of more than 14 million people.

"Pork producers are determined to make 1980 a year of progress, a banner year in spite of depressed farm prices and record losses," according to Orville Sweet, NPPC's executive vice-president.

Faced with an abundant supply of hogs and potential grain shortages because of this summer's heat wave, the nearly 100,000 members of the NPPC have decided to

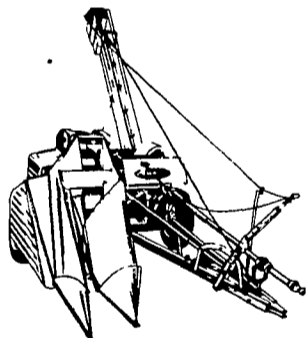
solve the marketing dilemma themselves.

The Pork Showcase promotion is designed to increase consumer awareness and acceptance of pork as an alternative to other red meats, and to move more pork through supermarkets and onto America's breakfast, lunch and dinner tables. The special newspaper supplement, scheduled to appear in selected cities, is filled with editorial material about price advantages, cooking, nutrition, storage and pork recipes.

The NPPC, whose goal is to promote consumer awareness and consumption of pork, funds advertising and promotional programs through a "check-off" program wherein a producer voluntarily contributes or "checks off" on each market hog sold. The organization had 35 member states, and each will have at least one major city involved in the promotion.

OUR SUPERPICKERS AND YOUR CORN CRIBS...

A New Idea Whose Time Has Come Again!



1 ROW PICKERS

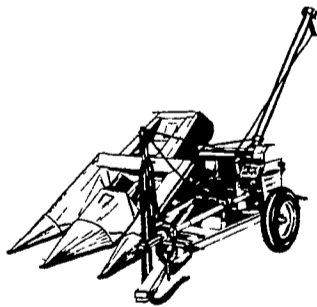
• Limited Amount From Last Years Stock
Special At . . .

\$4500

2 ROW PICKERS

• Limited Amount From Last Years Stock
Special At . . .

\$8600



FREE CORN DRYING . . .

Save money and beat the high cost of drying fuel at the same time with a little help from Mother Nature - your corn cribs and our Superpickers! When you put up ear corn this fall with our 2-row and 1-row pickers, you get free corn drying plus low cost maintenance. Dependable performance you expect from New Idea.

★ Come In and See Us Today... You Can Get The Whole Story From Us FREE!



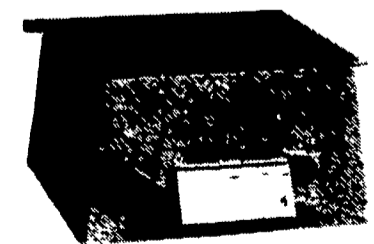
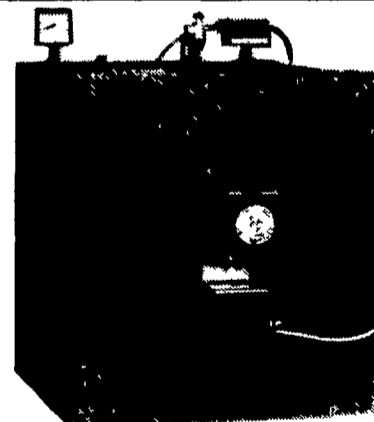
ZIMMERMAN'S FARM SERVICE

Bethel, PA

Phone 717-933-4114

An Automatic COAL-WOOD FURNACE with ROTARY GRATE? GREAT!

ESHLAND



High Capacity BOILERS

Designed for burning both **COAL & WOOD** with maximum efficiency and convenience.

- Automatic Dual Draft
- Unique ROTARY GRATE
- LARGE CAPACITY 40 & 55 Gal. Models.
- AQUASTAT CONTROLS
- Economical source of DOMESTIC HOT WATER
- Available in two parts for easy handling and installation.

FOR MORE INFORMATION, WRITE OR CALL TODAY!



ESHLAND ENTERPRISES INC.

P.O. BOX 23 GREENCASTLE, PA. 17225

Pa. 1-800-632 1896

U.S.A. 1-800-233 1993

Manufacturers of Boilers, Hot Air Furnaces, Freestanding stoves, & Fireplace inserts.