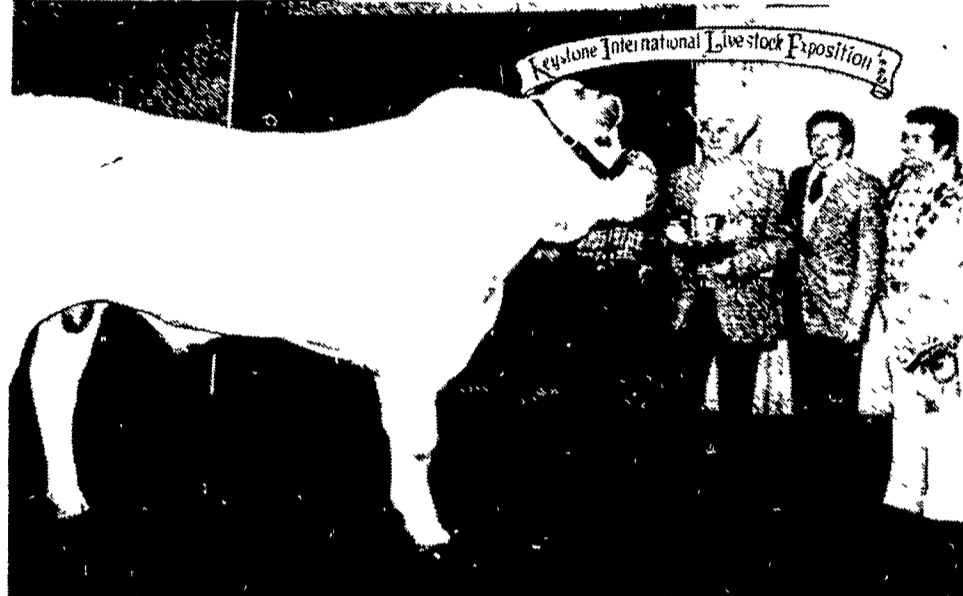


Linden Farm, Lagrangeville, N.Y. captured the grand champion Simmental heifer honors at KILE's first Simmental Show.



The grand champion Chianina bull was exhibited by Kohler Co. of Kohler, WI.

Pa. farms

(Continued from Page A23)

title with their senior bull calf, Windholme Robin King 959. Windholme Farm also captured the premier exhibitor and premier breeder of the show titles.

In the Polled Hereford Show, only the reserve grand champion bull honors went to a Pennsylvania entry.

4-K Cattle Co. and Y-Not Farm of Northpoint, Armstrong County, made their debut at KILE with Walking Tall. The late summer yearling bull took the blue in his class and went on to be tagged the reserve junior champion and reserve grand.

Walking Tall is a son of Will Via Justa V, known commonly as Jogger in Polled Hereford circles.

The grand champion bull, grand champion female and reserve grand champion female were all get of Enforcer 107H.

ACE Polled Herefords and Dunwalke Farm - Humboldt Corp. of Millbrook, N.H. exhibited the grand champion bull, Reinforcement. The late junior yearling bull was also

tagged junior champion by Judge Randall Reed, Columbus, OH.

Ace Polled Herefords and Ox Bow Ranch exhibited the grand champion female, WBF Ellens Enfer AEH. The early summer yearling heifer was also the junior champion of the Polled Hereford Show.

Following as reserve grand champion female was the Huckleberry Hall Farm early junior yearling entry. HHF Enforce Pride 1L was the senior champion heifer before bringing home the reserve grand honors to her Smuthsburg, MD home.

MH Ficoso Ebony Queen was named grand champion heifer in the Chianina Breeding Cattle Show.

Ebony Queen, a senior heifer, was exhibited by Kohler Co. of Kohler, Wisconsin. Kohler Co. also exhibited the grand champion Chianina bull, KK Superman, a junior bull calved April-July 31, 1979.

Eugene Moore of Warriors Mark, Huntingdon County, showed the reserve grand champion heifer, MS Miss Snowball 966, a junior heifer.

Reserve grand champion bull was shown by Whitehood, The Plains,

Virginia, and Over the Grass Farms of The Plains, Virginia. Their entry was Whitewood He Man, a senior bull.

Nittany Farms of State College, Centre County, showed the champion female calf, Nittany's White Lady 8003.

Reserve champion female calf was shown by Double "G" Show Cattle of Bellefonte, Centre County. Their entry was Miss Lucille 970, a late heifer calf. Double



Deputy Secretary of Agriculture Chet Heim helps Polled Hereford Queen Jane Sikorski present Ace Polled Herefords with the grand champion heifer trophy. Looking on is Judge Randall Reed.



The grand champion Angus bull was an April junior yearling exhibited by Rally Farms, Rosebank Angus Farm and Timber Valley Farm of Millbrook, N.Y.

"G" Farms also exhibited the reserve junior champion heifer, Black Donna 920.

Reserve champion bull calf was shown by Foreman Chianina Farm of Hershey, Dauphin County. Their entry was FCF Foreman's Tenspeed, an early bull calf. Out-of-state exhibitors

dominated the 1980 Simmental Breeding Cattle Show.

Linden Farms of Lagrangeville, New York, showed the grand champion heifer, Linden Miss Signal 603 L. This champion was a senior heifer, calved March-April 31, 1979.

Reserve grand champion heifer was exhibited by Seneca Simmental Ranch of Interlaken, New York. Their winning entry, Seneca Forest, won her junior heifer class, calved May-June 31, 1979, and went on to be

(Turn to Page A26)

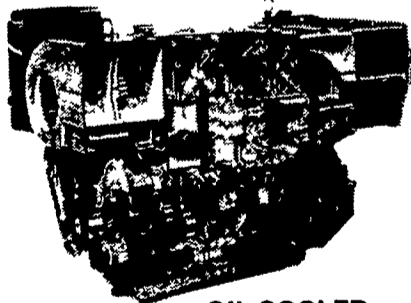


REPOWER With VM DIESEL



Harvesters, Haybines, Tractors, Cornpickers, Balers, Hydraulic Systems, Corn Binders, Choppers

All New HR SERIES - Air Cooled - Oil Cooled - Water Cooled



OIL COOLED

USED DIESELS

- SR 2 Lister
- SR 3 Lister
- HRS 6 Lister
- 1 Cylinder Deutz
- DVA 2200 Sianzi

471 DETROIT
Reasonably Priced

General Features:

- Integrally cast cylinders with inserted and removable wet type cylinder liners
- Light hypereutectic alloy pistons
- Extra-resistant steel connecting rods alloyed with special alloy head bearings
- Surface hardened steel crankshaft
- Drop-forged, casehardened and tempered steel camshaft
- Anti-friction cast-iron tappets alloyed
- Cast-iron tunnel type crankcase
- Rotary injection pump with mechanical governor
- Force-feed lubrication with built-in circuit and lobe type pump
- Diaphragm pump feed
- Oil and fuel filters with integral type element.
- Special structure and patented engine with consequent increases in performance and easier operation with low weight/output ratio low smoke emissions.
- Engine based on a design "modulus" formula which allows a maximum parts standardization and interchangeability.

QUEEN ROAD REFRIGERATION

Box 67, Intercourse, PA 17534
Phone: John D. Weaver - 717-768-9006 or
768-7111 or
Answering Service - 717-354-4374

24 HOUR
SERVICE

Martin LIMESTONE

Apply lime often for best results

To keep your soil neutral liming every 2 or 3 years is recommended because of the new higher analysis fertilizers being used today

MARTIN LIMESTONE, INC.
Blue Ball Pa 354-4125
Gap Pa 442-4148