

# Brubaker and ewe take first in Ladies Lead

BY SHEILA MILLER  
**HARRISBURG** — Lancaster County's Sarah Brubaker and her Hampshire yearling ewe, Lindsey, strolled through the sawdust of the sheep arena on Sunday evening to walk off with the first place honors in the Ladies Lead competition at KILE.

The pair, decked out in their finest wool, showed off their apparel to judges and

spectators as they walked around the show ring. Lindsey walked along next to Sarah like a trooper, although she was very nervous about the competition according to Sarah (this was her first one).

Based on their appearance, the ewe's ability to lead, and Sarah's activities in the sheep and wool industry, the pair were selected by a panel of three

judges as the best out of a stiffly competitive field of ten.

A 1980 graduate of Hempfield High School, Sarah has always been active in the Lancaster County's 4-H program, serving as president of both the beef and sheep club.

Sarah not only represents the sheep and wool industry in Ladies Lead contests — she has already started her own flock of registered Hampshire ewes. She keeps her ten ewes with her parents' flock on their farm in Lancaster.

During the Sunday evening competition, Sarah wore an outfit made almost completely of wool from the top of her head to her toes.

Her short cut, tailored wool jacket sported a stick-pin that represented the sheep industry on the collar. Completing the ensemble, Sarah wore a cream-color wool sweater and a tan wool skirt.

Even Sarah's hat was made from 100 percent wool.

Lindsey, Sarah's sheep finished out the wool wardrobe. The ewe wore her own natural outfit plus a halter made from the same material as Sarah's jacket. To add the final touch, wool pompoms decorated the ewe's tweed halter.

This was Sarah's first competition in Ladies Lead at KILE, however she has entered other competitions in the past.

She is currently employed by Atlantic Breeders Cooperative in the communications department.

Other contestants in the Ladies Lead included: Christine Ambler, R1 Cochranville; Kathi Elander, Woodstock, N.Y.; Patricia Moore, Elkton, MD; Lauren Putnak, Monongahela; Barbara Denise Garber, R3 Waynesburg; Elisa O'Connor, R4 Monongahela; Sonya Lynn Paul, R1 Marianna; Caroline A. Cerilli, Red Hook, N.Y.; and Beverly Giovanitti, Boiling Springs.



Presenting the first place Ladies Lead trophy to Sarah is proud mother, Dorothy Brubaker.



Sarah Brubaker of Lancaster and her Hampshire yearling ewe, Lindsey, walked off with the top honors in Ladies Lead during the 24th Annual Keystone Livestock Exposition.

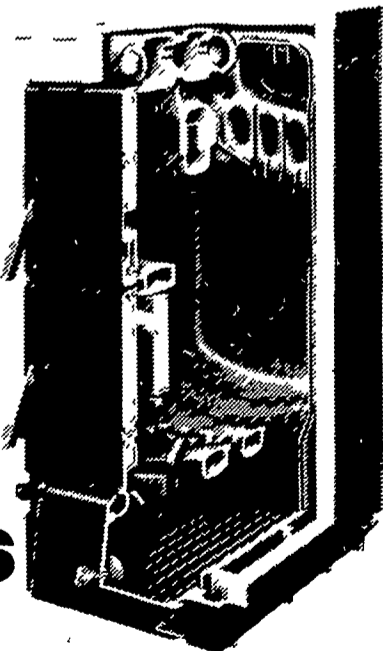
**MEMO  
 HAY,  
 STRAW &  
 EAR CORN  
 SALE  
 EVERY MONDAY  
 At 11 A.M.  
 NEW HOLLAND SALES  
 STABLES, INC.  
 Phone 717-354-4341  
 Lloyd H. Kreider, Auct.**

# #1

## WOOD OR COAL

Find out why we're #1 in the World!

- Adds on to your existing Hot Water Heating System.
- Cast Iron Construction.
- Wet Base.
- ASME Approved.
- Burns Wood or Coal.
- Converts to Oil or Gas.
- Automatic Control.



# Buderus

## HOWARD E. GROFF CO.

Fuel Oil, Gasoline, and Coal  
 111 E. State Street, Quarryville, PA 17566  
 Phone: 717-786-2166

# SALE!



Save on elegant Oneida tableware while you're saving at First Federal.

At First Federal we make it easy to build a complete service of fine Oneida stainless tableware for six or eight or as many as you like. Every time you add \$25 to your account you may purchase a place setting — or a set of accessory pieces — at specially reduced prices (see chart). But hurry you only have till November 30, 1980 to set your table.

Choose from the classic traditional styling of Briarwood or the elegant modern lines of Brookwood. Both beautiful and durable and equally appropriate for everyday meals or special occasions.

And while you're enjoying your new Oneida tableware your savings will also be earning the highest interest rates allowed by law. So stop in today at any of our eight offices and start building your collection as you build your savings.

(1) 5 Piece Place Setting	\$4 95
1 Dinner Fork 1 Dinner Knife	
1 Salad Fork 1 Soup Spoon 1 Teaspoon	
(2) 4 Iced Teaspoons	\$4 50
(4) 4 Teaspoons	\$3 95
(5) 3 Piece Hostess Set	\$4 95
1 Cold Meat Fork 1 Gravy Ladle	
1 Pierced Tablespoon	
(6) 4 Piece Completion Set	\$4 95
1 Sugar Shell 1 Butter Knife	
1 Tablespoon 1 Pierced Tablespoon	
(7) 3 Piece Serving Set	\$4 25
2 Tablespoons 1 Pierced Tablespoon	
(8) 4 Steak Knives	\$7 50
(9) 4 Cocktail Forks	\$4 50
(10) 2 Piece Carving Set	\$10 95

Prices Do Not Include State Sales Tax  
 Limit one free gift per family please

## First Federal

SAVINGS AND LOAN ASSOCIATION OF LANCASTER

23 East King Street, Lancaster Phone 393-0601

- 69 E. Main St. Lititz Phone 626-0251
- 335 Fifth St. Quarryville Phone 786-1010
- 519A Leaman Ave. Millersville Phone 872-4665
- 100 E. Main St. New Holland Phone 354-4427
- 24 E. Main St. Mt. Joy Phone 653-8121
- East Towne Mall Office Phone 393-0488
- Park City Center Lanc. (In Sears Mall) Phone 299-3745