

Livestock market and auction news

Lancaster Weekly

(Continued from Page A2)

lower. Supply included 41 per cent slaughter steers, 18 per cent cows, 8 per cent bulls, 5 per cent heifers with the balance feeder steers.

SLAUGHTER STEERS: High Choice and Prime 3-4 1050-1375 lbs. 72.50-75.00, few early part of week 75.00-76.25; Choice Grade 2 1050-1300 lbs. 74.00-75.50, few early part of week 75.00-76.25; Choice Grade 2 1050-1300 lbs. 74.00-75.50, around 15 head 76.00-77.60; Choice 2-4 1000-1425 lbs. 70.00-74.00, few 74.00-74.60, high Good and low Choice 2-3 66.00-70.50, Good 2-3 61.00-67.00; Good and Choice 1150-1400 lbs. holsteins 61.50-65.50, Standard 1-2 54.00-59.00.

SLAUGHTER HEIFERS: Choice 2-3 850-1130 lbs. 64.50-66.00, few 68.00-69.30, around 20 head Choice Grade 2 930-1200 lbs. 71.50-73.10; Good 2-3 825-1050 lbs. 59.00-64.75.

COWS: Utility and Commercial 1-3 46.00-50.00, few sales early part of week 51.00-53.50, Cutter 1-2 44.00-48.00, few 48.00-50.00, canner and low Cutter 36.50-44.00.

BULLOCKS: Choice 1000-1350 lbs. 61.00-67.50, around 25 head 66.00-71.25; Good 1000-1150 lbs. 55.00-60.50.

BULLS: Yield Grade 1 1300-1800 lbs. 58.00-62.25, few 62.50-66.75; Yield Grade 2 1000-1350 lbs. 55.00-60.25, few 900-1050 lb. 52.00-55.00.

VEAL CALVES: Vealers mostly steady. Demand fair for calves returned to farm.

VEALERS: Prime 240-330 lbs. 116.00-126.00, few 126.00-128.00; Choice 140-280 lbs. 98.00-111.00, few 111.00-120.00; high Good and low Choice 140-250 lbs. 81.00-95.00, few 95.00-100.00, 90-115 lbs. 72.00-82.00, 65-85 lbs. 65.00-76.00.

RETURNED TO FARM: 85 head 80-125 lbs. holstein heifers 165.00-187.50, bulk 70-85 lbs. 75.00-95.00 with few 110.00-150.00; bulk 80-105 lbs. holstein bulls 77.00-98.00, around 100 head 95-115 lbs. 98.00-106.00.

Chambersburg Auction

Thursday, October 9

Report supplied by PDA

CATTLE: 350. Compared with last Thursday market: Slaughter steers Grading Good & Choice .50-1.50 lower; Sl. cows .50-2.50 lower. Sl. steers Choice No. 2-3 1000-1200 lbs. 66.50-71.00 one 71.85, Good 59.50-65.00 with couple to 67.00. Sl. Heifers one Standard 55.00. Sl. cows Utility & Commercial 45.00-50.50, few to 51.75, Cutters 44.50-49.00; Canner & L. Cutter 40.50-43.50; Shells down to 37.00. Sl. bullocks one choice 60.50; one Good 54.25. Sl. bulls: Yield Grade No. 1, 1150-2290 lbs. 53.85-61.00.

FEEDER CATTLE: Steers Large Frame No. 2 500-800 lbs. 53.00-60.00.

CALVES: 482. Vealers mostly 2.00-3.00 lower. Bulk of supply returned to farm. Choice 88.00-104.00; Good 75.00-88.00, Standard & Good 70-95 lbs. 74.00-80.00; Utility 50-100 lbs. 60.00-72.00.

FARM CALVES: Hol. Bulls 80-125 lbs. 80.00-112.00, mostly 90.00-107.00; Hol. Heifers 80-165 lbs. 125.00-205.00, mostly 150.00-185.00, Slaughter Calves Grading Choice 200-300 lbs. 74.00-89.00; Good 200-300 lbs. 65.00-75.00.

HOGS: 75 Barrows and gilts weak -.75 lower. US No. 1-2 210-235 lbs. 49.85; 50.10; one lot No. 2-3 310 lbs. 47.25; one lot No. 1-2 190 lbs. 48.75; Sows US No. 1-3 375-500 lbs. 45.50-48.50. Few Boars 37.00-37.25.

FEEDER PIGS: 107 US No. 1-3 25-40 lbs. 11.00-16.00 per head; No. 1-3 75-100 lbs. 28.00-32.00 per head.

SHEEP: 45 Woolled sl. lambs Choice 75-110 lbs. 56.50-63.50.

45.00; Shells down to 30.00. Sl. bulls: few Yield Grade No. 1, 1200-1550 lbs. 59.00-63.50; few Yield Grade No. 2, 900-1400 lbs. 50.00-57.00.

CALVES: 120 Vealers steady. Choice 93.00-109.00; Good 80.00-95.00; Standard & Good 90-120 lbs. 70.00-80.00-70-90 lbs. 60.00-72.00; few Utility 55-130 lbs. 55.00-62.50.

FARM CALVES: Hol. Bulls 85-120 lbs. 80.00-92.00; Hol. Heifers 80-120 lbs. 85.00-155.00.

HOGS: 60 No. 1-3 200-240 lbs. 49.00-51.00; few No. 2-3 200-260 lbs. 47.50-48.50; few No. 1-3 130-160 lbs. 35.00-40.00; Sows US No. 1-3 300-550 lbs. 42.00-46.00; few 47.00-47.50. Boars 34.00-37.50.

FEEDER PIGS: No sales on offer.

SHEEP: 75. Woolled sl. lambs Choice 70-85 lbs. 62.50-63.50; few Good 70-90 lbs. 58.00-60.00. Sl. ewes: 12.00-13.00.

Weekly Summary

Friday, October 10

Report supplied by PDA

CATTLE: 6314 Compared with 5383 head last week, and 5324 head a year ago. Slaughter steers mostly 1.00-2.00 higher; Sl. heifers steady-2.00 lower; Sl. cows uneven, mostly steady-1.50 lower; Sl. bullocks mostly 1.00 higher; Sl. bulls steady-2.00 higher. Sl. steers; High Choice & Prime No. 3-4 72.25-76.25; Choice No. 2-4, 69.50-75.75, Good 62.00-68.00; Standard 55.00-62.00. Sl. heifers Choice 62.00-68.50; few 73.10; Good 57.00-62.50; Standard 54.00-57.00. Sl. cows Utility & Commercial 46.50-51.50; Cutters 44.00-49.00; Canner & L. Cutter 39.00-45.50; Shells down to 30.00. Sl. bullocks; Choice 62.00-68.50; Good 58.00-64.00.

FEEDER PIGS: 2029 Compared with 1915 head last week and 1991 a year ago. Steady-2.00 higher. US No. 1-3 20-35 lbs. 8.00-16.00 per head; No. 1-3 35-50 lbs. 15.00-28.00; No. 1-3 50-80 lbs. 18.00-33.00.

GRADED FEEDER PIGS: 2630. Compared with 2861 head last week, and 4343 head a year ago. All sales by CWT. Feeder Pigs mostly weak-7.00 lower, spots to 11.00 higher. US No. 1-2 20-40 lbs. 60.00-87.00, 40-50 lbs. 61.00-90.00, 50-60 lbs. 59.00-78.00, 60-80 lbs. 50.00-61.00, few to 76.00; US No. 2-3 30-40 lbs. 45.00-69.00, 40-50 lbs.

Sl. bulls: Yield Grade No. 1, 1000-2400 lbs. 58.00-62.50, few 65.50; Yield Grade No. 2, 900-1450 lbs. 54.00-60.00.

FEEDER CATTLE: Steers Large Frame No. 1 350-600 lbs. 67.00-78.00; Medium Frame No. 1 300-600 lbs. 58.50-70.50. Heifers, Medium frame No. 1, 300-550 lbs. 53.00-62.00. Bulls, Medium & Large Frame No. 1 500-750 lbs. 53.50-62.50.

CALVES: 4061 Compared with 4074 head last week and 3284 head a year ago. Vealers mostly steady. few Prime 109.00-126.00; Choice 95.00-107.00; Good 80.00-95.00; Standard & Good 90-115 lbs. 70.00-82.00; 70-90 lbs. 65.00-75.00; Utility 50-110 lbs. 53.00-70.00.

FARM CALVES: Active Hol. Bulls 85-130 lbs. 80.00-128.00, mostly 95.00-115.00; Hol. Heifers 85-175 lbs. 85.00-205.00, mostly 120.00-180.00.

HOGS: 7215. Compared with 7314 head last week and 5964 head a year ago. Barrows and gilts steady-.25 lower, spots .50 lower, US No. 1-2 200-240 lbs. 49.50-51.75 No. 1-3 200-250 lbs. 48.50-50.75; No. 2-3 200-275 lbs. 47.00-48.50; No. 1-3 140-190 lbs. 40.00-45.00; Sows 1.00-2.00 higher. US No. 1-3 300-600 lbs. 39.00-48.00; No. 2-3 300-650 lbs. 35.00-40.00. Boars 30.00-38.00, few down to 25.00.

FEEDER PIGS: 2029 Compared with 1915 head last week and 1991 a year ago. Steady-2.00 higher. US No. 1-3 20-35 lbs. 8.00-16.00 per head; No. 1-3 35-50 lbs. 15.00-28.00; No. 1-3 50-80 lbs. 18.00-33.00.

GRADED FEEDER PIGS: 2630. Compared with 2861 head last week, and 4343 head a year ago. All sales by CWT. Feeder Pigs mostly weak-7.00 lower, spots to 11.00 higher. US No. 1-2 20-40 lbs. 60.00-87.00, 40-50 lbs. 61.00-90.00, 50-60 lbs. 59.00-78.00, 60-80 lbs. 50.00-61.00, few to 76.00; US No. 2-3 30-40 lbs. 45.00-69.00, 40-50 lbs.

39.00-64.00, 50-60 lbs. 54.00-67.00.

SHEEP: 838 Compared with 942 head last week and 240 head a year ago. Woolled

sl. lambs unevenly steady. Choice 60-110 lbs. 57.00-64.00, few 66.00; Good 45-90 lbs. 50.00-60.00; Sl. ewes; 12.00-30.00.

Meats judging team first in retail

YORK — The York County 4-H Meat Judging Team represented Pennsylvania in competition at the Atlantic Rural Expo Judging Contest at Richmond, VA last week. The team ranked first in retail judging with a score of 827 points.

Ken Sunday, York R1, was first high individual in retail judging with a score of 279 points, Mark E baugh, Delta was second with 278 points, and Bryan Palmer placed sixth with 270 points.

The team placed fourth in meat identification with a score of 613 points. Alabama's team placed first with 683 points.

The York County team also placed fourth in the quiz category with a score of 122 points. Bryan Palmer, Shrewsbury, was sixth high

individual in the quiz portion of the contest.

In the total overall contest, the team placed third with a score of 1542 points, Alabama was first with 1625 points and Virginia was second with 1568 points. The fourth team member was Michelle Bankert, Hanover. The team was accompanied by Kathy Sunday, York, and Tony Dobrosky, Glen Rock, team trainers. The team will compete at the National Judging contest at Kansas City, MO on November 12.



Need...

HAY - STRAW - EAR CORN PEANUT HULLS

Buy Now and Save!

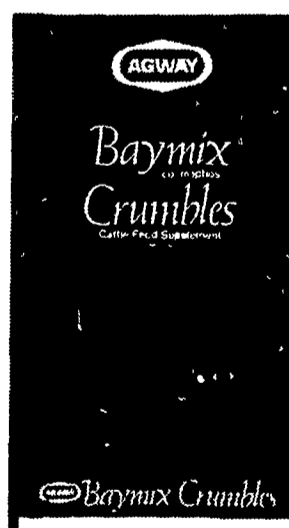
More and more farmers are buying from us for better value and all around satisfaction.

DELIVERED — ANY QUANTITY
Phone Area Code 717-687-7631

ESBENSCHADE TURKEY FARM
PARADISE, PA.

AGWAY

Stop Worms from Stealing Your Milk!



BAYMIX CRUMBLES

Research indicates that 9 out of 10 dairy cows have worms. Chances are, your herd is infested, too.

Worms can cost you plenty... in lost production potential in reduced feed efficiency. in slower growth of herd replacements. You can stop those losses now!

BAYMIX BREAKS THE WORM CYCLE! No need to withhold milk so you can worm the whole herd at one time. Just topdress Baymix on feed for six days to effectively reduce internal parasitism on the whole farm.

THE TIME TO START IS NOW! The recommended Baymix program is a worming in the Fall and again in the Spring so the time to start is now.



START USING BAYMIX AND STOP WORMS FROM STEALING YOUR MILK. CONTACT YOUR LOCAL AGWAY STORE TODAY.

BERNVILLE
215/488-1370

CHAPMAN
215/395-3381

CRESSONA
717/385-2160

HANOVERDALE
717/566-2569

IRONTON
215/799-3111

KUTZTOWN
215/683-3889

LANCASTER
717/394-0541

LEBANON
717/273-2621

LEESPORT
215/926-3717

NEW HOLLAND
717/354-4526

QUARRYVILLE
717/786-2126

SALUNGA
717/898-2248

G & G FEED & SUPPLY
717/665-5001

HENRY HOOVER INC.
717/733-6593

FRED IRWIN INC.
215/588-1627

AND OTHER PARTICIPATING AGWAY STORES IN PA, NJ, MD, & DE.

DAIRYMEN YOU NEED A KE FREE PREHEATER

The Interest In This Unit Has Been Overwhelming

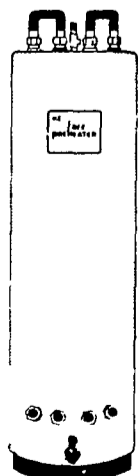
A Low Cost Unit That Will Fit Your Pocketbook.

— FEATURING —

- Removable Coils inside a 2 1/2" Clean out hole.
- Set Up From 1 to 4 compressors.

ENERGY RECLAIMING UNIT

The Price Is Unbelievable!



CALL 717-626-1152