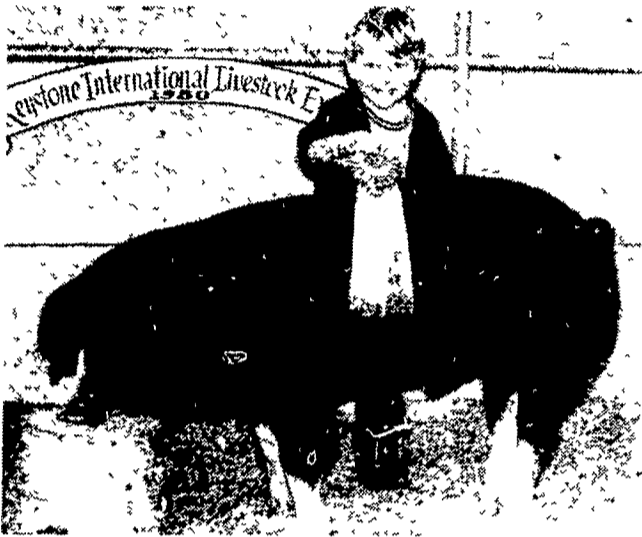




Keith Bard, R4 Lewistown, exhibited the reserve champion Spotted Swine.



James Parlett, Airville, showed the champion Chester White barrow.



Five-year-old Steven Wessner of Rocky Acres Farm, R2 New Tripoli, showed the champion Poland China barrow at KILE.

Hazlett

(Continued from Page C16)

James Parlett, Airville, swept the Chester White Barrow Show, claiming both the champion and reserve champion trophies with his two heavyweight entries.

The reserve champion barrow of the Yorkshire contest was exhibited by Strawbridge and McCleary, Stewartstown. Mrs. J.C. Strawbridge had the reserve champion crossbred barrow. Steve Strauss, Ephrata,

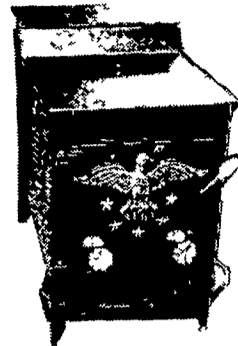
exhibited the reserve champion barrow in the Junior show.-SM
Junior and Open Show results are as follows:

(Turn to Page C20)



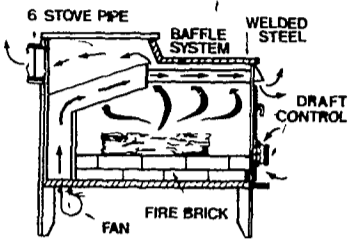
Penn State's swine herdsman Vernon Hazlett showed the champion Duroc barrow. The Penn State entry went on to be the reserve champion of the Open show.

CONSIDERING A BAKER? Consider Us Before You Buy - Cash & Carry Prices



Patent Pending

The Baker "Silver Eagle" is engineered for peak efficiency. Not only do you have the fastest cold-to-hot time, but also the longest burning. Constructed from heavy-welded steel plates, cast iron door and hinges, and fire brick lining. Tastefully finished in early American tradition, the Baker "Silver Eagle" will add warmth, beauty, and charm to your home, shop and place of business. We re-invented the wood burning stove: circulatory and radiant heat.



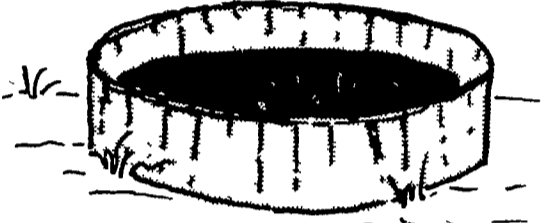
Baker

**J & A
STOVES**

3752 East Newport Rd.
Gordonville, PA 17529
Along 772, 1/2 Mile East
of Intercourse
PH. 717-768-8913

Baker Wood Burning Stoves, the patented system for warmer living

CONCRETE CIRCULAR



MANURE STORAGE TANKS

Built To your Specifications & Capacity
• Circular • Flat Side to a Building

Above Ground, Below
Ground (Gravity Flow-No
Pumping) or Combination
ASCS APPROVED

COMPARE!
For Structure And Price
You Have Everything
To Gain.

CALL KEN GROFF at

STRASBURG POURED WALLS

R.D. #2, Box 8, Strasburg, PA 17579

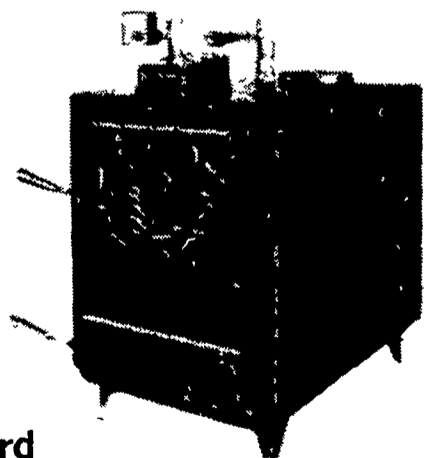
Ph: 717-687-6668

Call Anytime - Evenings Preferred

TIMBER EZETM

The Ingenious Wood/Coal Heating System

The TIMBER EZE is especially designed to hook up with your central hot water or hot air heating systems thus eliminating the need to burn costly fuel. Simply install the TIMBER EZE beside your furnace and connect the water pipes to the boiler and let the TIMBER EZE heat your water system.



Tested to U.L. 1482 Standard

Four Models To Choose From

FEATURES:

- Automatic Temperature Control
- Heavy Duty Cast Iron Rocking Grates
- Cast Iron Doors
- Fire Brick Lined

- Burns Logs up to 28"
- Weight 710 lbs.
- Constructed of 3/16" and 1/4" steel
- Available in 8 1/2 or 3 1/2 gal water jackets

Dealer Inquiries Invited

A.R. FLAUD

R.D. 2, Rock Road, Honey Brook, PA 19344
For more information call: (215) 273-3211

SOYBEAN ROASTING ON YOUR FARM

DON'T WASTE IT — ROAST IT

We Are Excited To Announce That
David N. Groff

RD 1 Box 506C
Lewisburg, PA 17837
717-523-3342

Will Be Serving The North Central Part of
PA With A Portable Roaster

HAPPY ROASTING DAYS!

CUSTOM GRAIN ROASTING DONE IN PA.
AND SURROUNDING STATES
Your Co-Custom Grain Roasters

DALE L. SCHNUPP

RD 6, Lebanon, Pa. 17042 Ph: 717-865-6611

ALLEN SUMMERS

RD #1, Box 152-C 215-932-4761
Nottingham, Pa. 19362

